

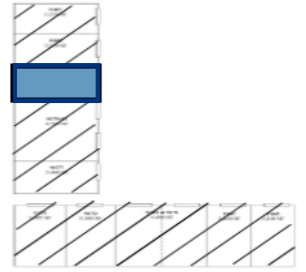
Leased & Managed By:



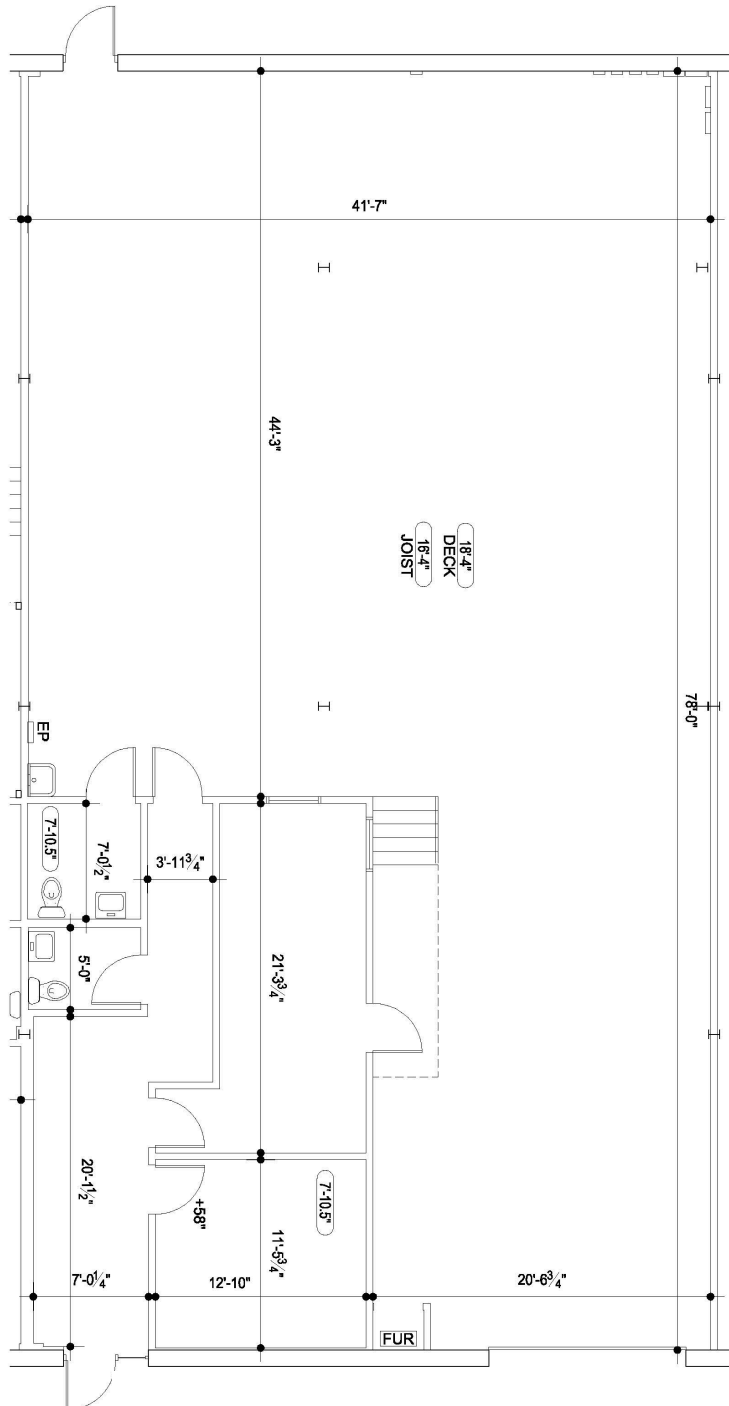
GENERAL COURT COMMERCE CENTER

9183 General Court, Plymouth, MI 48170

Location Map



3,350 SF AVAILABLE
738 SF Office | 2,612 SF Warehouse



www.ari-el.com



29355 Northwestern Hwy., Suite 301, Southfield, MI 48034



248-557-3800