

FOR LEASE

538 WEST 5TH STREET LOS ANGELES

PRIME LOCATION NEAR PORT OF LOS ANGELES

- 6,800 square feet of mixed use commercial space
- Front and Rear Parking lot with a total of approximately 20 parking spaces
- Monument Sign
- Near the newly renovated San Pedro Fish Market
- 121 feet of street frontage for maximum exposure
- Low Triple Net (NNN) Expenses

DARRYLL HAMILTON

DRE#02000676

310-941-8199

Darryll@2Buy.com



Presented By.



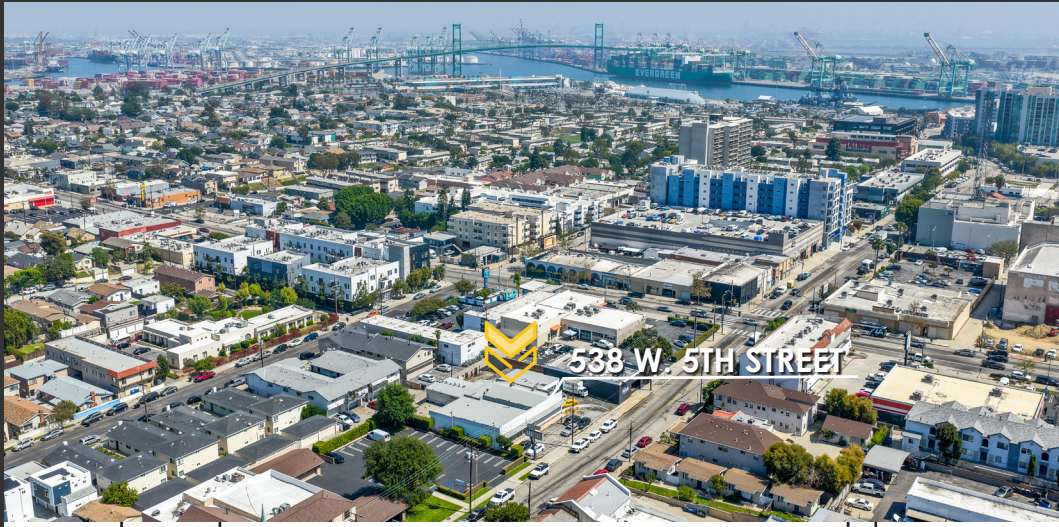
THOMPSON TEAM
REAL ESTATE SINCE 1981

DRE# 02069081



FOR LEASE

538 WEST 5TH STREET LOS ANGELES

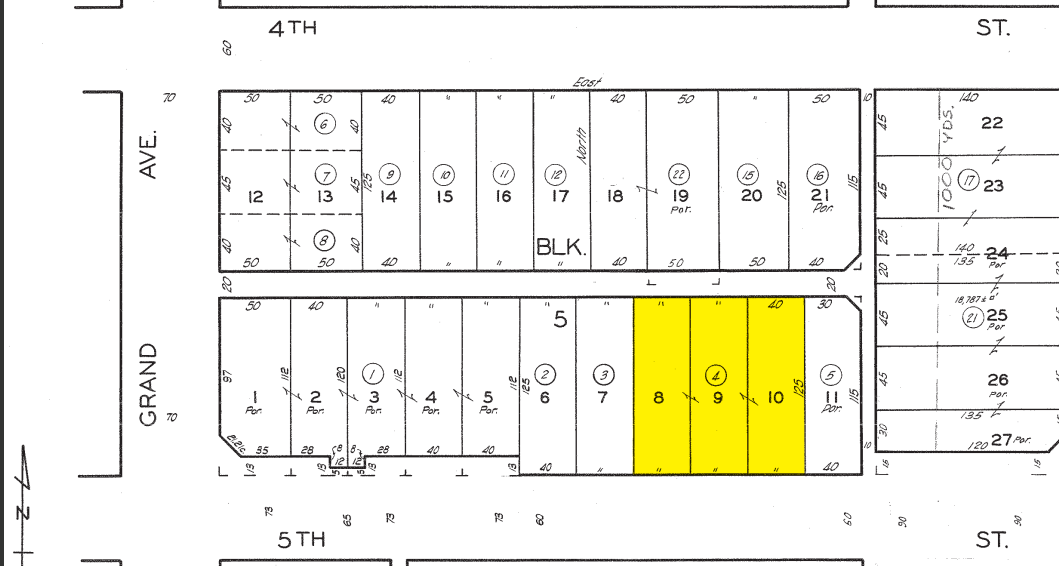


6,800 SF AVAILABLE

\$1.40/SF *plus NNN*
Gross Lease Rate

IMMEDIATELY AVAILABLE

4/1/26



DARRYLL HAMILTON

DRE#02000676

310-941-8199

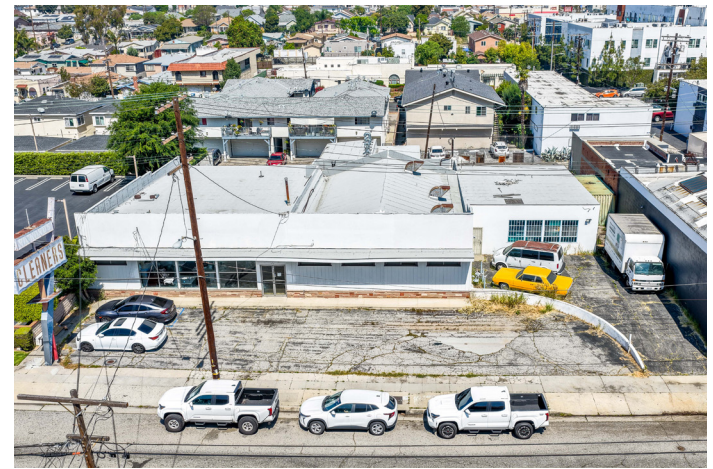
Darryll@2Buy.com



THOMPSON TEAM
REAL ESTATE SINCE 1981

FOR LEASE

538 WEST 5TH STREET,
LOS ANGELES



DARRYLL HAMILTON

DRE#02000676

310-941-8199

Darryll@2Buy.com



THOMPSON TEAM
REAL ESTATE SINCE 1981