

F O R L E A S E

ONE & TWO MERIDIAN PARK PLACE

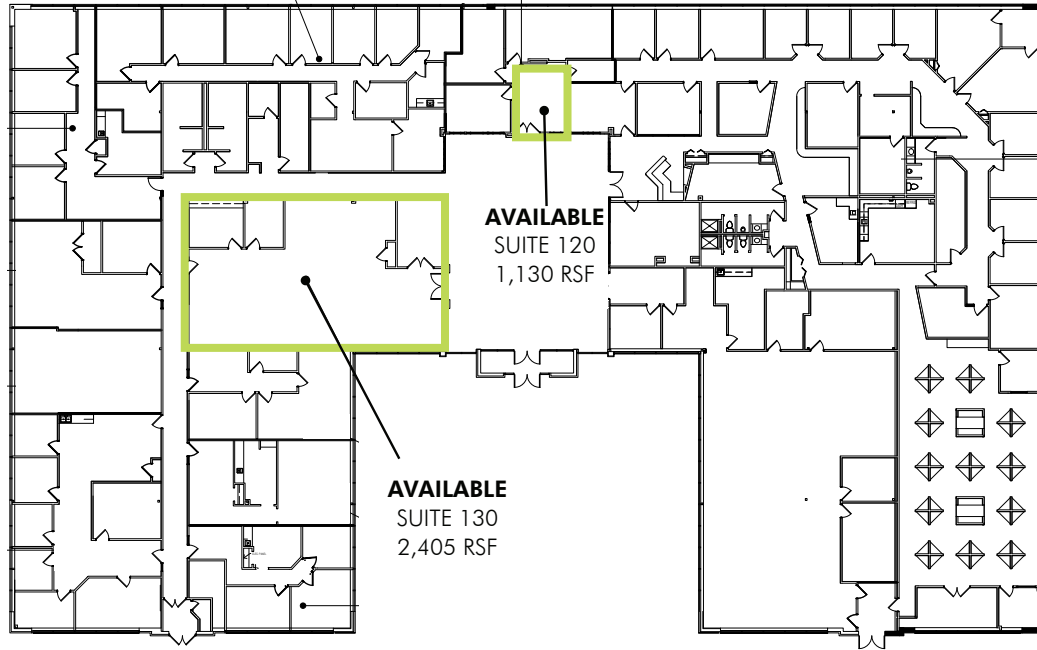
12220-12400 N. Meridian Street / Carmel, IN 46032



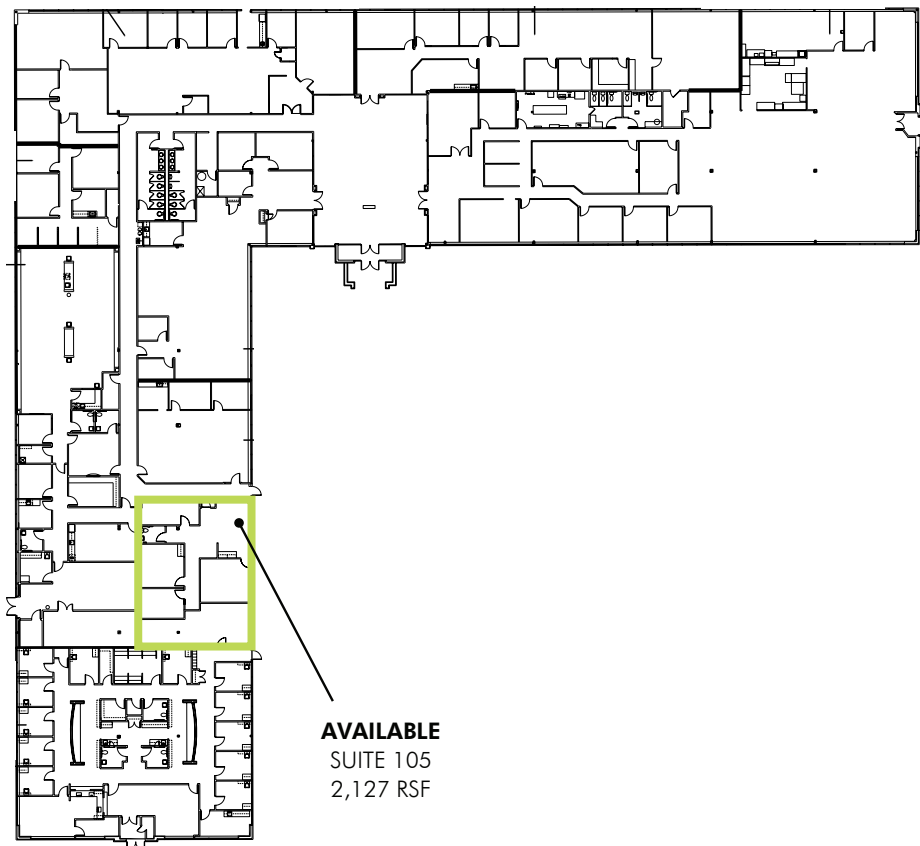
PROPERTY HIGHLIGHTS

- + Single-Story Class A Buildings
- + Ample Parking
- + Nestled in Beautiful Wooded Setting
- + Meridian Street Signage
- + 3 Minutes to I-465
- + Abundant Dining & Retail Amenities
- + Great Medical Space with Visibility
- + Close Proximity to Ritz Charles Event Venue

ONE MERIDIAN PARK PLACE AVAILABILITY



TWO MERIDIAN PARK PLACE AVAILABILITY







PLEASE CONTACT:

JOHN VANDENBARK

Senior Vice President

+1 317 269 1046

john.vandenbark@cbre.com

CONNOR SCOTT

Senior Associate

+1 317 269 1076

connor.scott@cbre.com

© 2021 CBRE, Inc. All rights reserved. This information has been obtained from sources believed reliable, but has not been verified for accuracy or completeness. You should conduct a careful, independent investigation of the property and verify all information. Any reliance on this information is solely at your own risk. CBRE and the CBRE logo are service marks of CBRE, Inc. All other marks displayed on this document are the property of their respective owners, and the use of such logos does not imply any affiliation with or endorsement of CBRE. Photos herein are the property of their respective owners. Use of these images without the express written consent of the owner is prohibited.