

VERADA
73 Wythe Ave
Williamsburg

Prime Retail
Opportunity



First time available in over 30 years.

Originally home to Brooklyn Brewery, 73 Wythe Avenue is a two-floor, 18,000 SF retail opportunity in the heart of Williamsburg.

Brooklyn Brewery is relocating around the corner, continuing its anchor presence in the neighborhood.

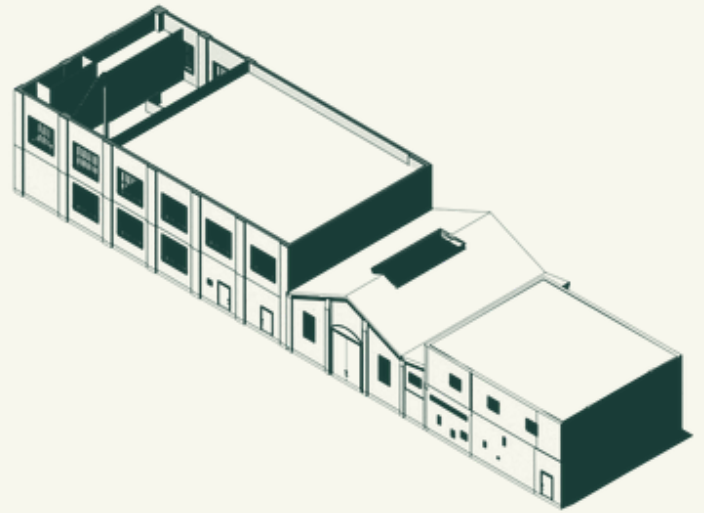
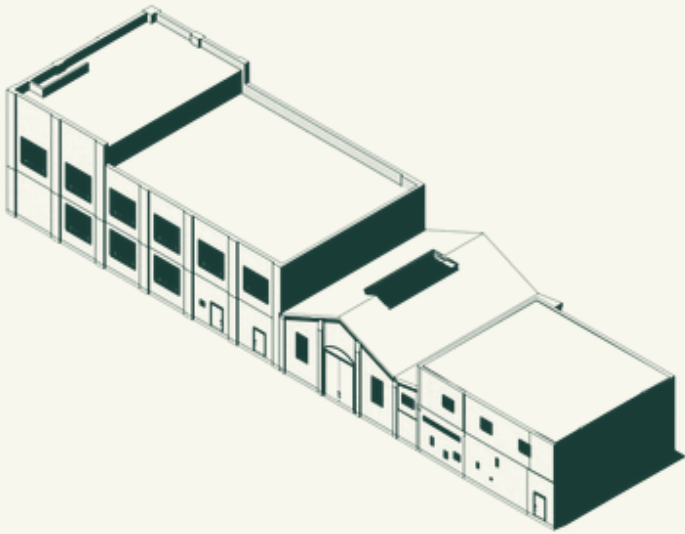
The ground floor totals 12,000 SF | The second floor totals 6,000 SF

Ceiling heights range from 13 ft to 20 ft throughout.

The building sits at the corner of Wythe Avenue and North 11th Street with 24 ft of frontage on Wythe Ave and 120 ft along N 11th Street.

Neighboring tenants include:
The William Vale Hotel, Vital Climbing Gym, Kith, Pura Vida Acme Smoked Fish, Brooklyn Brewery, LifeTime (under development).

[View Listing >](#)



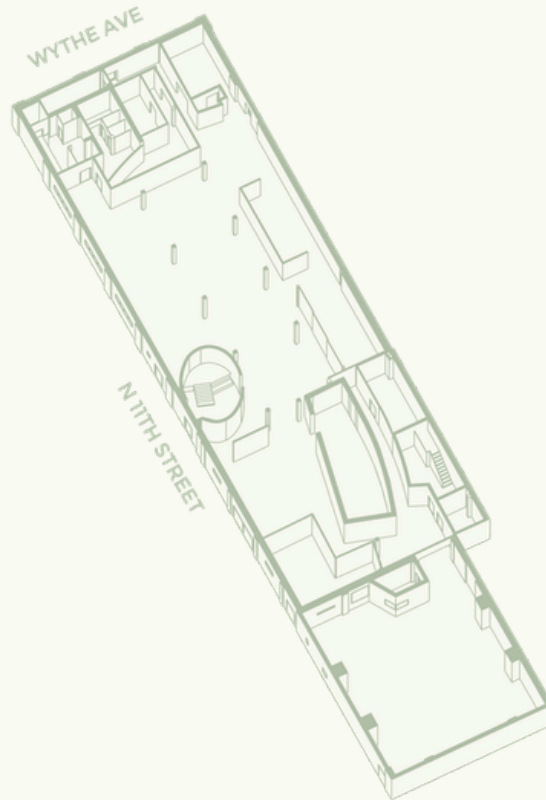
Total Square Footage	18,000 SF
Ground Floor	12,000 SF
Second Floor	6,000 SF
Ceiling Height	12 FT- 20 FT
Frontage	24 FT Wythe Ave 120 FT N 11 th Street
Ceiling Height	13 FT - 16 FT
Features	Bathrooms in place
Past Tenant	Brooklyn Brewery (30 Years) Relocating: 1 Wythe Ave
Market Concessions	Ownership will provide market concession for qualified tenant
Divisible	Yes

[View Listing >](#)

Available Floors

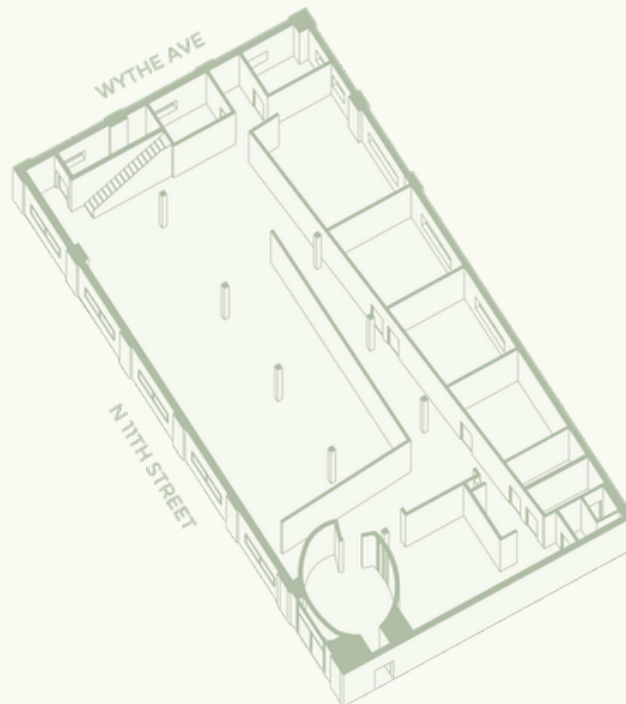
Ground Floor

12,000 SF



Second Floor

6,000 SF



[View Listing >](#)



[View Listing >](#)



[View Listing >](#)



[View Listing >](#)

Video Tours





V 73 Wythe Ave

Food & Beverage

Tranportation

Grocery

Entertainment

Health & Wellness

Education

[View Listing >](#)

Julia Zorain
jz@veradaretail.com
 201-707-5594

Nate Mallon
nm@veradaretail.com
 860-416-7288

Brendan Thrapp
bt@veradaretail.com
 201-787-9679

VERADA
 veradaretail.com