

750

W. NORTH AVE

LINCOLN PARK



LINCOLN PARK MEDSPA



MID-AMERICA[®]
Asset Management, Inc.

AVAILABILITY

2,140 SF

FEATURES

- New construction mixed-use development with 48 residential units and ground floor retail space
- Anticipated Delivery Q1 2027
- Retail Space Divisible
- Excellent visibility with 80' of frontage along North Ave
- One block from the redline "L" stop with over 970,000 annual riders
- Public parking available across North Ave
- Ideally located in the heart of the North and Clybourn retail corridor of Lincoln Park catering to the surrounding neighborhoods including Lakeview, Bucktown/Wicker Park, River North, Old Town, and Gold Coast.

AREA RETAILERS



SEPHORA sweetgreen

DEMOGRAPHICS

within 1 mile



34,678
HOUSEHOLDS



61,787
POPULATION



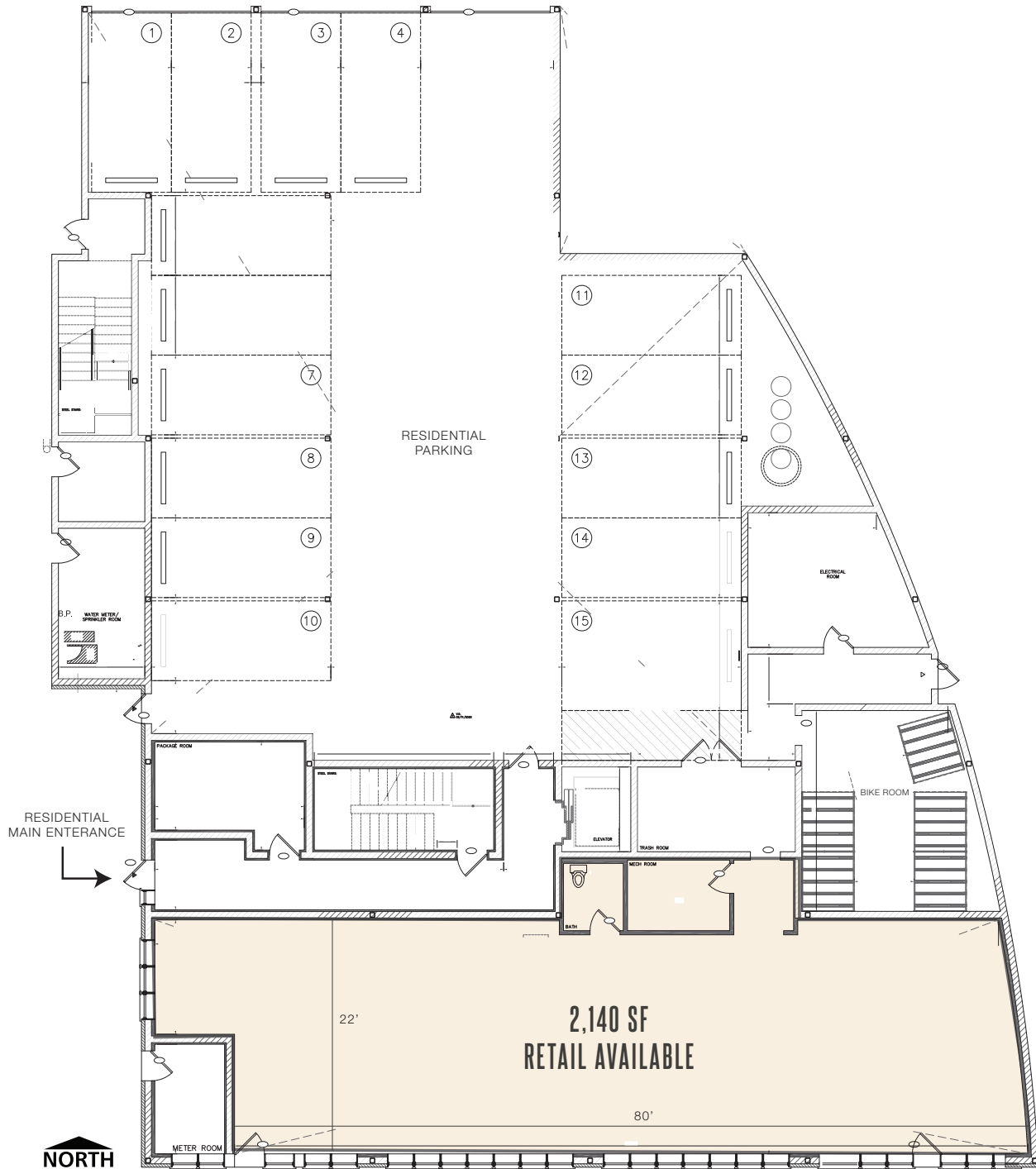
\$198,075
AVG. HOUSEHOLD
INCOME



61,540
DAYTIME
POPULATION



SITE PLAN



AERIAL



750

W. NORTH AVE

LINCOLN PARK

JAIME BERTSCHE

630.954.7223

JBERTSCHE@MIDAMERICAGRP.COM

ABBY WALDVOGEL

630.954.7378

AWALDVOGEL@MIDAMERICAGRP.COM



MID-AMERICA
Asset Management, Inc.

One Parkview Plaza, 9th Floor
Oakbrook Terrace, Illinois 60181
630.954.7300
MidAmericaGrp.com

The information contained herein has either been given to us by the owner of the property or obtained from sources that we deem reliable. We have no reason to doubt its accuracy but we do not guarantee it.

A MEMBER OF **CHAINLINKS** RETAIL ADVISORS