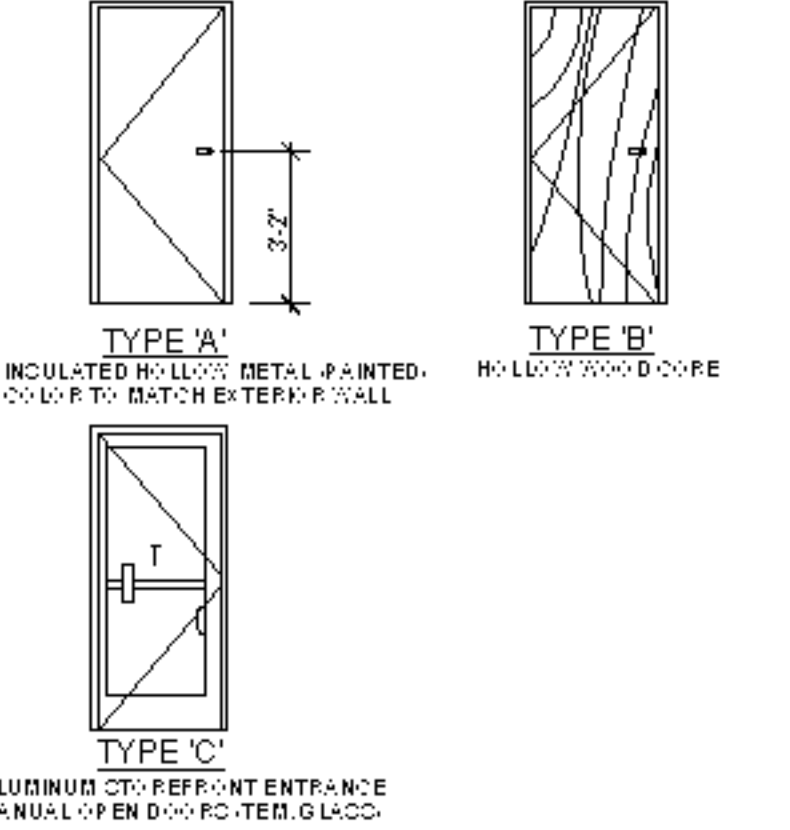


DOOR SCHEDULE

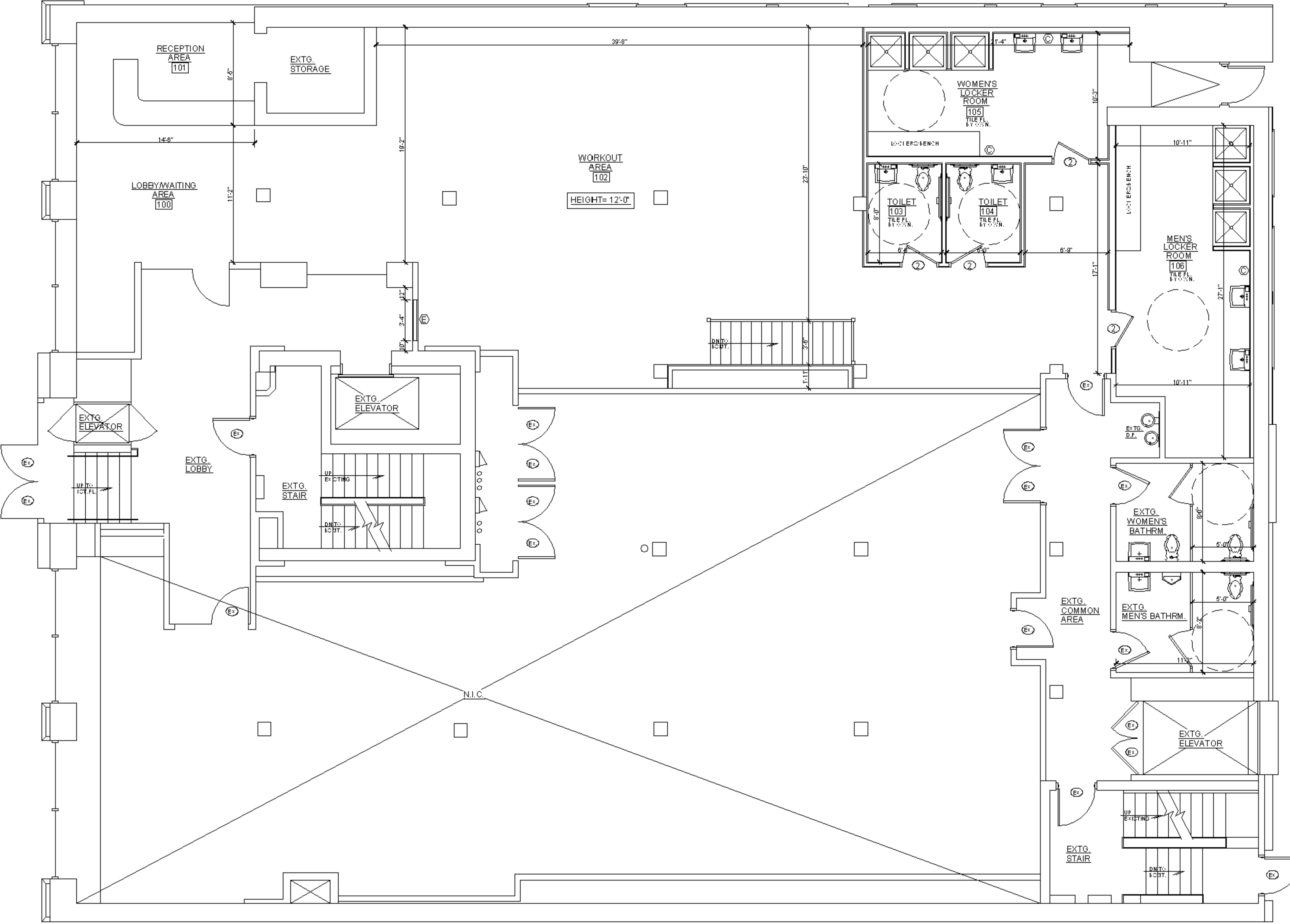
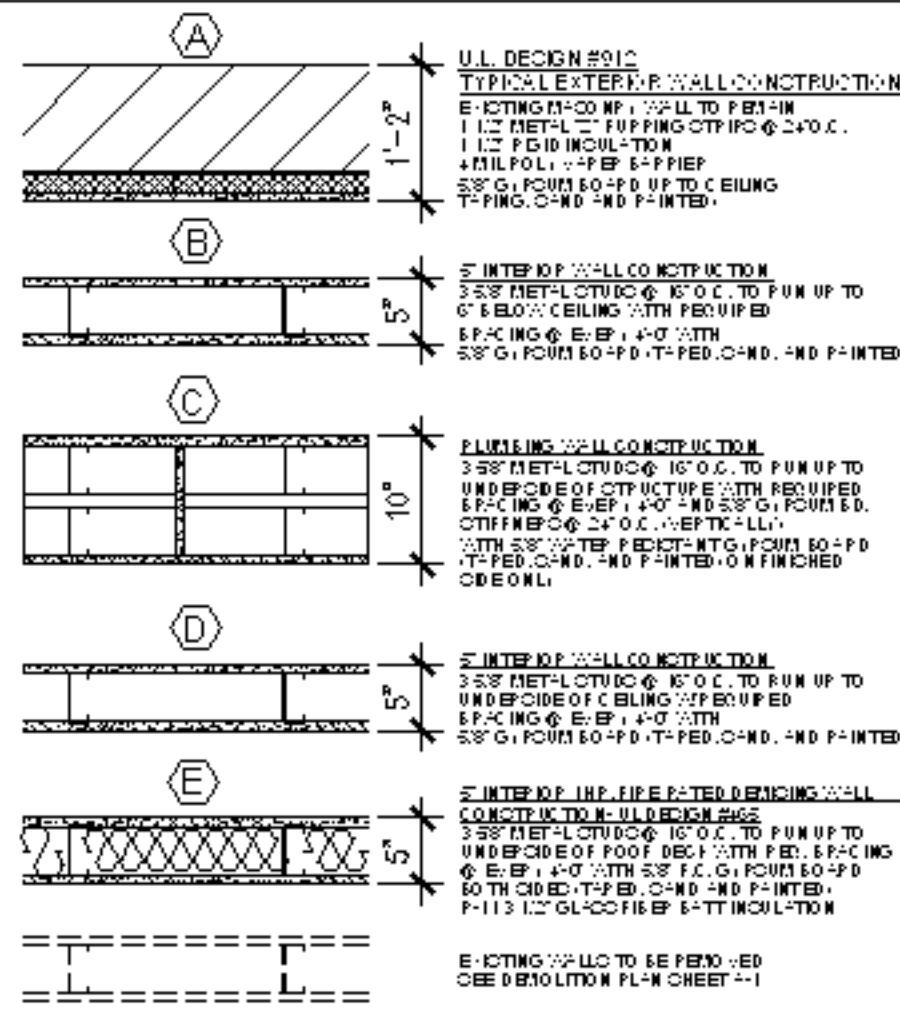
DOOR NO.	DOOR TYPE	DESCRIPTION
1A	A	SINGLE 3'-0" x 7'-0" x 1 3/8" INSULATED HOLLOW METAL HOLLOW METAL FRAME PAINTED: 1 UNIT LOCK SET LEVER HANDLE 1 CYLINDER SET OF PERIMETER WEATHERSTRIPPING 1 CLOSER, S L&O MAX
2	B	SINGLE 3'-0" x 6'-8" x 1 3/8" HOLLOW WOOD WOOD FRAME 1 PRIVACY LOCK 1 CLOSER LEVER H
3	C	SINGLE 3'-0" x 7'-0" x 1 3/8" ALUMINUM TEMPERED INSULATED GLASS 1 DEAD LATCH DEVICE 1 STANDARD WOODHEAD 1 CLOSER, S L&O MAX 1 PUSH BAR 1 1/2" HEIGHT x 1" ALUMINUM THRESHOLD
4	B	SINGLE 3'-0" x 6'-8" x 1 3/8" HOLLOW WOOD WOOD FRAME 1 CLOSER LEVER H



- ALL EXTERIOR DOORS TO HAVE STAMPED PROOF HINGED THRESHOLD WEATHERSTRIPPING.
- ALL EXT. EXIT DOORS TO OPERATE WITHOUT THE USE OF A KEY FROM THE DIRECTION OF EGRESS.
- ALL HARDWARE TO BE COMMERCIAL GRADE HEAVY DUTY. VERIFY DIMENSIONS FOR ANY ADDITIONAL HARDWARE.
- ALL EXT. DOORS TO HAVE 1 1/2" HIGH ALUM. THRESHOLD.

NOTES:
 ALL INT. WALL AND CEILING FINISHES TO BE CLASS II 20-75 F.S.R.
 ALL GYPSUM BOARD SHALL BE SECURELY FASTENED USING SCREWS. FINISH ALL CORNERS WITH METAL BEAD, USE CASING BEAD AT ALL ADJACENT SURFACES. FINISH DIMPLES AND JOINTS USING MANUFACTURERS RECOMMENDED (3) COAT PERFORMA-TAPE SYSTEM.
 ALL INTERIOR WALLS TO BE PAINTED 1 PRIME COAT EXCEPT TOILETS APPLY 2 COATS OF SEMI-GLOSS WASHABLE WHITE PAINT.
 FLOOR SHALL BE EXPOSED CONCRETE WITH SMOOTH IMPERVIOUS SURFACE FREE FROM TRAIL MARKS EXCEPT THE TOILETS SHALL BE FINISHED WITH COMMERCIAL VINYL TILE WITH 4" VINYL BASE.
 TREATED PLYWOOD FOR THE INSTALLATION OF THE HOT WATER HEATER. REINFORCE METAL STUDS W/2X4 WOOD STUDS AS NEEDED TO SUPPORT PLATFORM.
 PROVIDE (2) FINISH COATS OF INDUSTRIAL OIL BASE PAINT OVER BASE PRIMER ON ALL EXTERIOR METAL.
 RIGID WALL INSULATION TO BE R-10 FOR 1 1/2" THICKNESS. POLYISO CYANURATE BOARD, CELOTEX "THERMAX" INSULATION BOARD OR EQUAL.

WALL CONSTRUCTION TYPE



DRAWING INDEX:
A1: SITE PLAN, NOTES, DEMOLITION PLANS, AND SCHEDULES
A2: FLOOR PLANS, NOTES, AND DETAILS
A3: FLOOR PLANS, NOTES, AND DETAILS

INTERIOR ALTERATIONS TO EXISTING RETAIL SPACE CONVERT TO NEW ENRGI FITNESS GYM
 AT
 215 W. OHIO ST.
 CHICAGO, IL 60654

AUGUST 10, 2013

FLOOR PLANS, NOTES, AND DETAILS

Sheet Number:

A-2

01 FIRST FLOOR PLAN
 SCALE: 1/4"=1'-0"
 NORTH