

LEASE HERE

4520 S PECOS ROAD

Las Vegas, NV 89121

Professional Offices

On the South Pecos Corridor



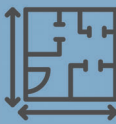


Suites from
+/-1,735 to 3,421 RSF
with up to
+/-9,715 RSF
combined

6:1000 parking with
covered spaces
available

LAW OFFICES
KOCH & BRIM, LLP



Turn key spaces, direct suite access, and professional management

SUBMARKET	USE	AVAILABLE	ZONING	RATE
 Eastern / Pecos Central Las Vegas Office Corridor	 Professional Office or Medical	 +/-1,735 to 3,421 Individually, or up to 9,715 Contiguous Rentable Square Feet	 C-P Clark County Commercial Professional	 \$1.30 - \$1.45 NNN with \$0.38 NNNs (TI & FREE RENT AVAILABLE)

ABOUT THIS PROPERTY

Freestanding building with direct walk-up suites

4:1000 Parking ratio with covered spaces available

Monument signage on Pecos available (21,800 CPD)

Tenant improvement available for qualified tenants

Rent concessions available for qualified tenants



4520 S PECOS ROAD

Las Vegas, NV 89121

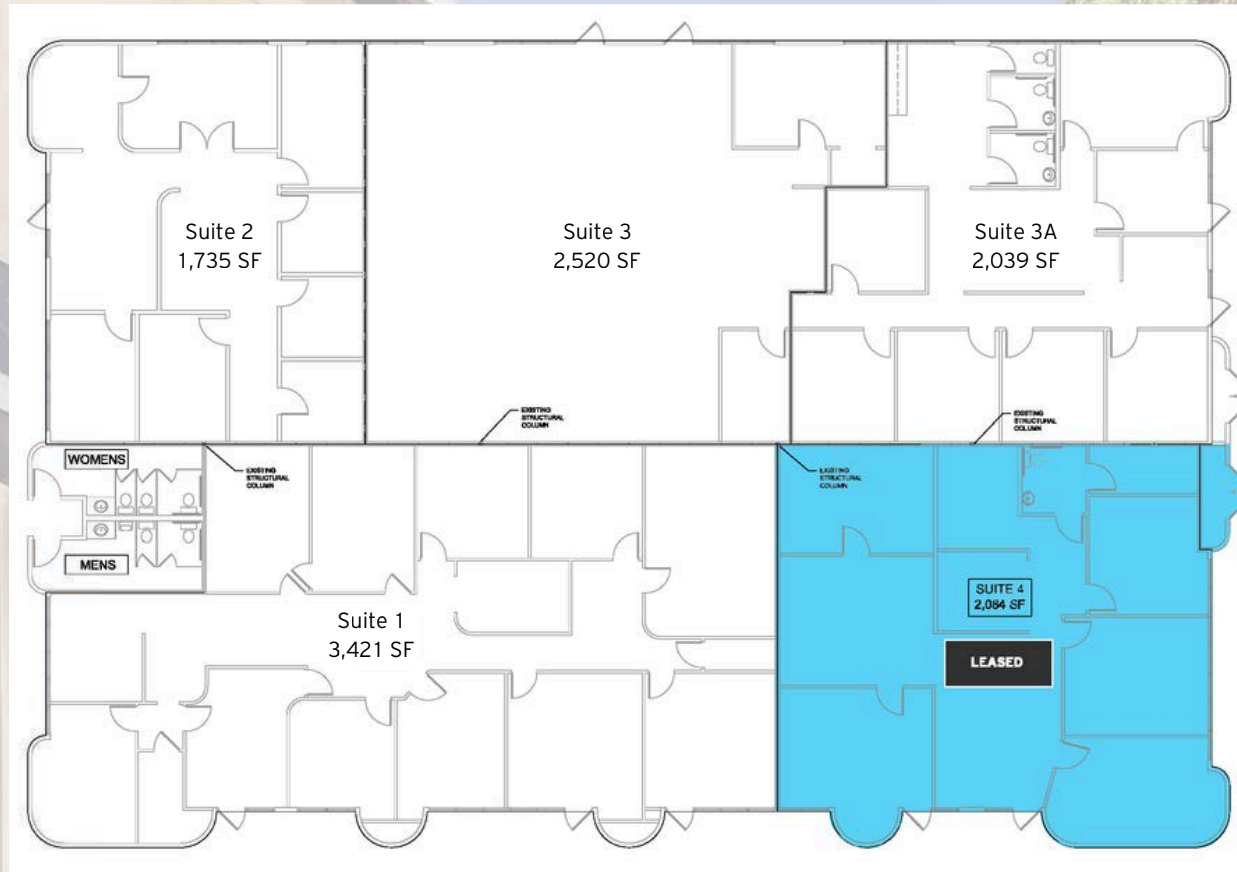




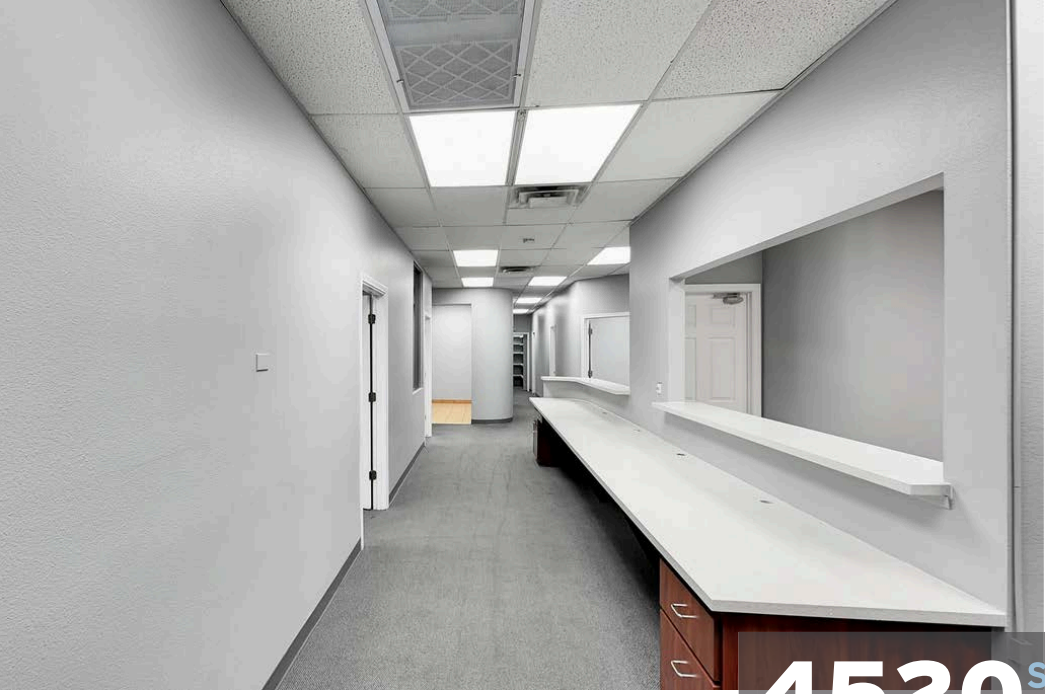
4520 S PECOS ROAD
Las Vegas, NV 89121



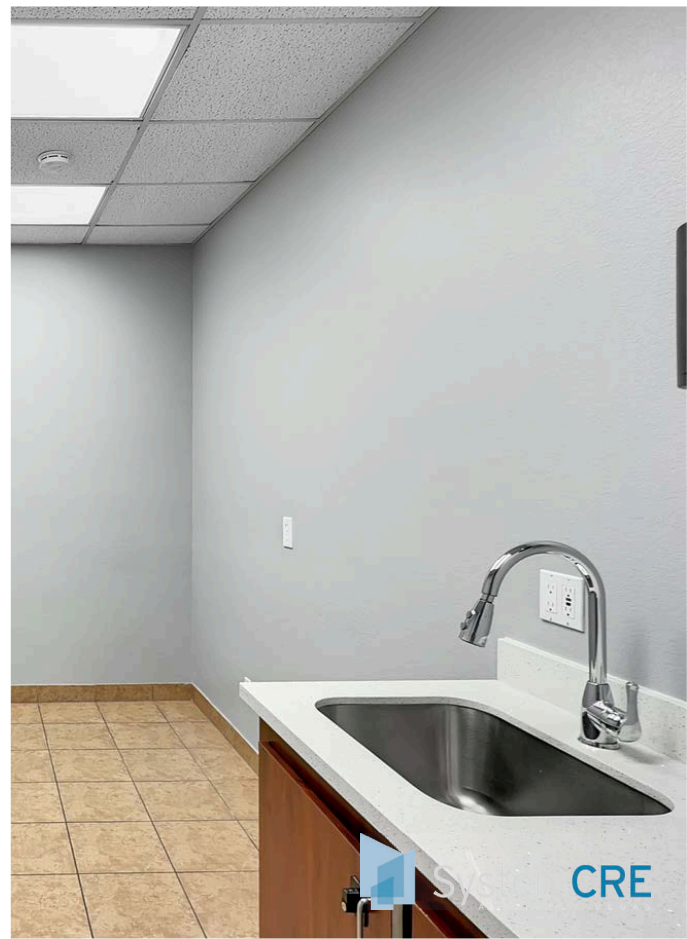
Current Availabilities



Suite #	Use Type	RSF	Base Rent	NNN	Total Monthly	About This Space
Suite 1	Office/ Professional	3,421	\$1.35/ SF NNN	\$0.38 Est	\$5,918	9 Private offices, 2 admin corrals, copy room, IT room. Reception / Reception built in desk, individual offices with direct exterior access, storage, direct entry into men's common area restroom. Currently combined with Suite 2
Suite 2	Office/ Professional	1,735	\$1.35/ SF NNN	\$0.38 Est	\$3,001	6 offices, front entry lobby area with service window / counter, double door conference room. Direct access to common area women's restroom. Currently combined with Suite 1.
Suite 3	Office/ Professional/ Events	2,520	\$1.30/ SF NNN	\$0.38 Est	\$4,233	Open space with entry lobby and single private office. Currently combined with Suite 3A
Suite 3A	Office/ Professional	2,039	\$1.45/ SF NNN	\$0.38 Est	\$3,731	Dual entry lobby with corner conference room, 4 inline offices along wall, single floating office, bullpen area, 2 full restrooms, 1 separate single WC, break sink / break area. Currently combined with Suite 3



4520 S PECOS ROAD
Las Vegas, NV 89121



FOR MORE INFO OR TO TOUR:

Ryan Misaresh, LEED® AP | Managing Director

213.309.3279 cell

ryan@systemcrelv.com

NVRED# S.0174644.LLC | CA DRE# 01858655

Kate Chandler | Associate

714.306.6213 cell

kate@systemcrelv.com

NVRED# S.0199912

The contents of this offering memorandum are thought to be accurate at the time of publishing. However, we makes no guarantees, representations or warranties of any kind, expressed or implied, regarding the information including, but not limited to, warranties of content, accuracy and reliability.

© 2025 The System CRE Team at Simply Vegas - Ryan Misaresh | Kate Chandler
www.systemcrelv.com