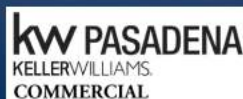


9323 RUSH STREET



PRIME OWNER-USER INDUSTRIAL OPPORTUNITY ON RUSH STREET



SOUTH EL MONTE, CA 91733

9323 RUSH STREET

Offering Memorandum | South El Monte, CA 91733



STEVE CHANG

Founder & Managing Director

626.381.9885 Direct

626.491.2668 Mobile

steve@changinvestmentgroup.com

CA DRE #02028509



The information contained in the following Offering Memorandum is proprietary and strictly confidential. It is intended to be reviewed only by the party receiving it from Keller Williams and it should not be made available to any other person or entity without the written consent of Keller Williams. By taking possession of and reviewing the information contained herein the recipient agrees to hold and treat all such information in the strictest confidence. The recipient further agrees that recipient will not photocopy or duplicate any part of the Offering Memorandum. If you have no interest in the subject property at this time, please return this Offering Memorandum to Keller Williams.

This Offering Memorandum has been prepared to provide summary, unverified financial and physical information to prospective purchasers, and to establish only a preliminary level of interest in the subject property. The information contained herein is not a substitute for a thorough due diligence investigation. Keller Williams has not made any investigation, and makes no warranty or representation with respect to the income or expenses for the subject property, the future projected financial performance of the property, the size and square footage of the property and improvements, the presence or absence of contaminating substances, PCBs or asbestos, the compliance with local, state and federal regulations, the physical condition of the improvements thereon, or the financial condition or business prospects of any tenant, or any tenant's plans or intentions to continue its occupancy of the subject property. The information contained in this Offering Memorandum has been obtained from sources we believe to be reliable; however, Keller Williams has not verified, and will not verify, any of the information contained herein, nor has Keller Williams conducted any investigation regarding these matters and makes no warranty or representation whatsoever regarding the accuracy or completeness of the information provided.

All potential buyers must take appropriate measures to verify all of the information set forth herein. Prospective buyers shall be responsible for their costs and expenses of investigating the subject property. All potential buyers are strongly advised to take advantage of their opportunities and obligations to conduct thorough due diligence and seek expert opinions as they may deem necessary, especially given the unpredictable changes resulting from the continuing COVID-19 pandemic. Keller Williams has not been retained to perform, and cannot conduct, due diligence on behalf of any prospective purchaser. Keller Williams's principal expertise is in marketing investment properties and acting as intermediaries between buyers and sellers. Keller Williams and its investment professionals cannot and will not act as lawyers, accountants, contractors, or engineers. All potential buyers are admonished and advised to engage other professionals on legal issues, tax, regulatory, financial, and accounting matters, and for questions involving the property's physical condition or financial outlook. Projections and pro forma financial statements are not guarantees and, given the potential volatility created by COVID-19, all potential buyers should be comfortable with and rely solely on their own projections, analyses, and decision-making.

Any rent or income information in this offering memorandum, with the exception of actual, historical rent collections, represent good faith projections of potential future rent only, and Keller Williams makes no representations as to whether such rent may actually be attainable. Local, state, and federal laws regarding restrictions on rent increases may make these projections impossible, and Buyer and its advisors should conduct their own investigation to determine whether such rent increases are legally permitted and reasonably attainable.

SECTION 1

EXECUTIVE SUMMARY



Property Summary

Address	9323 Rush St, South El Monte, CA 91733
Property Type	Industrial
Year Renovated	2023
Building Size	±22,850 SF
Lot Size	±38,432 SF
Parking	25 Spaces Including 1 Handicap
Zoning	M (Manufacturing) Zoning

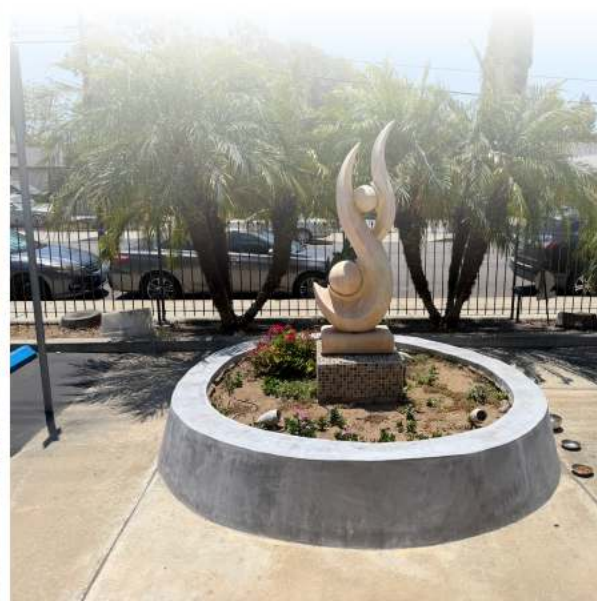
CONTACT LISTING AGENT FOR PRICING



Clear Height	13-19' (Verify)
Power	1,600a/240v 3p Heavy (Buyer Verify)
Condition	Fully Renovated & Move in Ready
Backyard	Large Private Fenced Yard



EXTERIOR LAYOUT











Rosemead Blvd

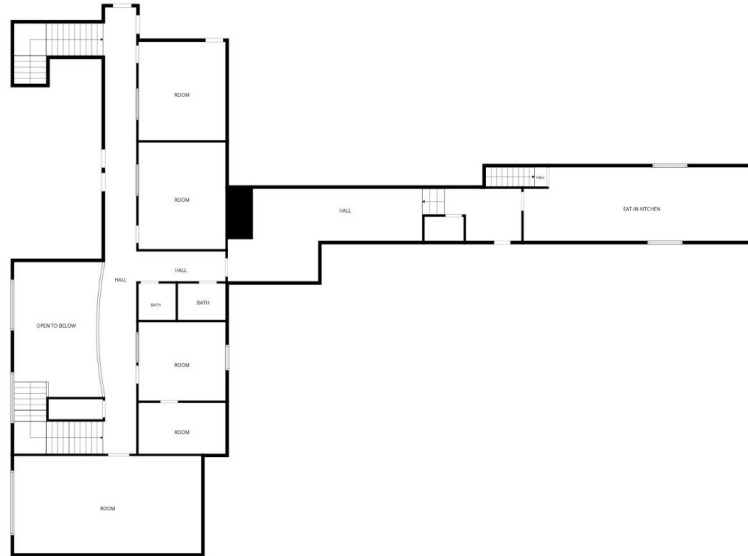
Rush St



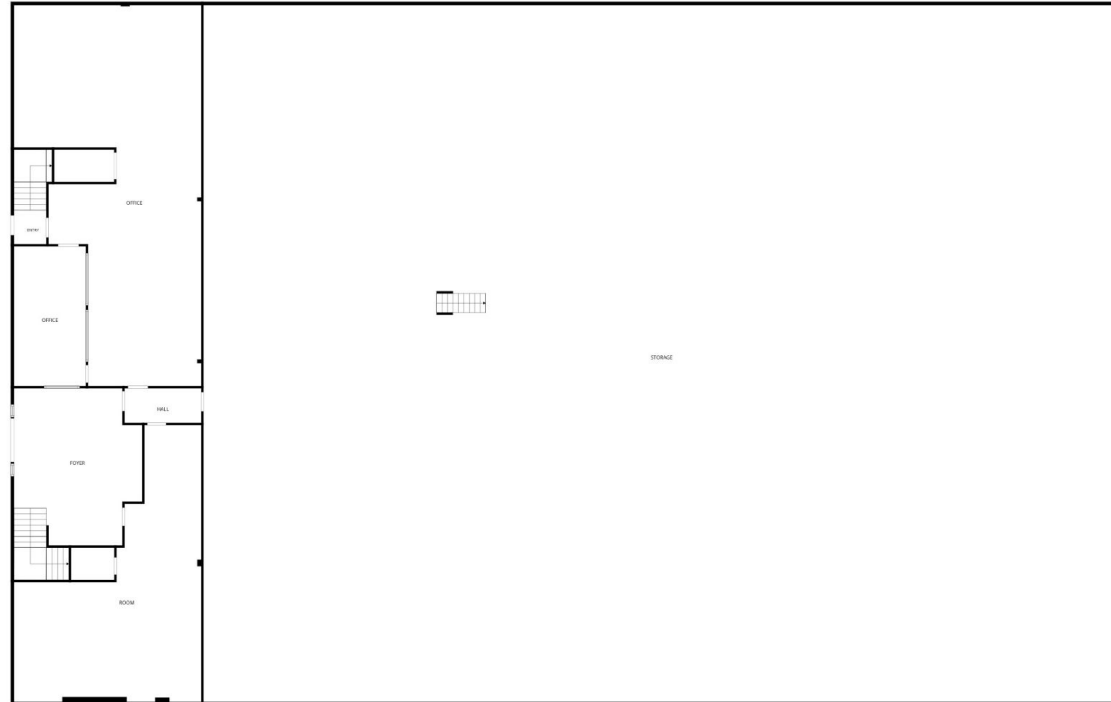




FLOOR PLANS



1st floor



2nd floor

Investment Overview

CHANG INVESTMENT GROUP of KW Pasadena is proud to present a rare opportunity for an owner-user or investor to acquire a well-maintained industrial facility at 9323 Rush Street, in the heart of the San Gabriel Valley's highly sought-after South El Monte industrial market. The property features $\pm 22,850$ SF of building area situated on a substantial ± 0.88 Acres lot, offering a functional layout, ample yard space, and excellent operational flexibility.

Recently renovated in 2022-2023, the property benefits from a new roof, fresh exterior paint, new paved driveway and yard, new HVAC units, motorized gates/rollup door, new flooring in the office area, move-in-ready and low capital expenditures. Zoned M (Manufacturing), the facility accommodates a wide range of industrial and manufacturing uses and is equipped with heavy power (Buyer verify), making it ideal for fabrication, manufacturing, warehousing, distribution, and other power-intensive operations.

A standout feature of the property is its large private fenced rear yard, offering valuable outdoor storage, equipment staging, fleet parking, or future operational expansion opportunities. Strategically located with convenient access to major transportation corridors, the property provides exceptional connectivity throughout Los Angeles County and the greater Southern California market.

This is a unique opportunity to secure a versatile industrial asset in a supply-constrained market with strong long-term fundamentals.





CONTACT LISTING AGENT FOR PRICING

PROPERTY HIGHLIGHTS

- ±22,850 SF Industrial Building Sitting on ±38,432 SF Land Area (0.88 acres)
- Recently Renovated (2022-2023) with New Roof, Fresh Exterior Paint, New Paved Driveway & Yard, New HVAC Units, New Flooring, Motorized Gates & Rollup Door
- One (1) Oversized 16' x 10' GL Door
- 13'-19' Clear Height
- M (Manufacturing) Zoning Provides Wide Uses
- Outdoor Storage and Equipment Staging Potential
- Convenient access to I-10, I-605, SR-60, and I-710 corridors
- Move-in-ready condition with minimal deferred maintenance



SECTION 3

LOCATION OVERVIEW

NOTICE
DELIVERIES
PLEASE RING
DOORBELL

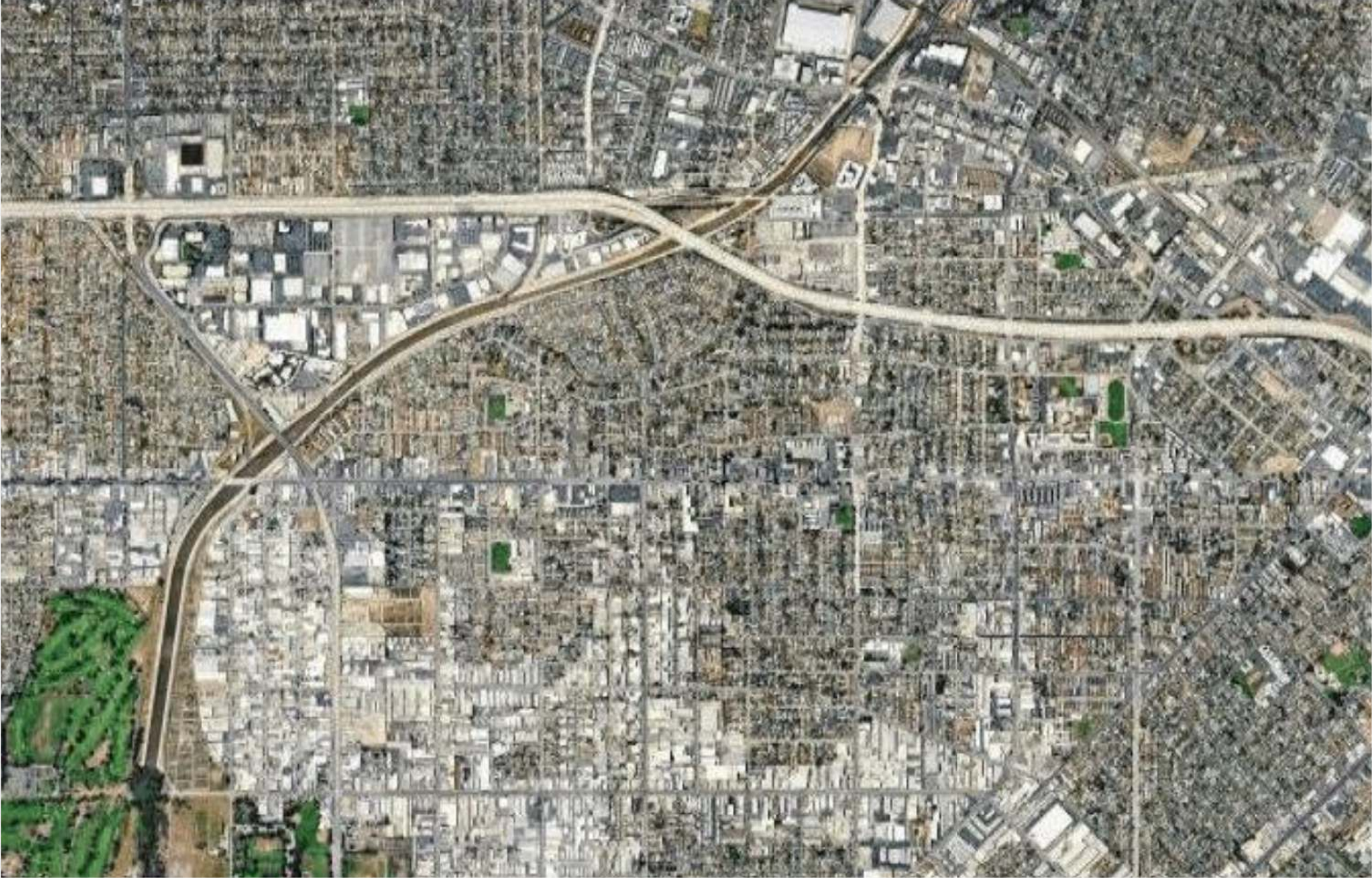
SOUTH EL MONTE

CITY OVERVIEW

Incorporated in 1958 with a vision centered on commerce, the City of South El Monte is a highly stable, logistics-driven enclave located in the heart of the San Gabriel Valley, just 13 miles east of Downtown Los Angeles. Spanning roughly 2.8 square miles, the city is overwhelmingly dedicated to commercial and industrial land uses, boasting a remarkably "business-friendly" local government tailored to support warehousing, manufacturing, and wholesale operations. As a critical, low-vacancy node in the Southern California supply chain, South El Monte offers an exceptional infill environment insulated from new construction competition, backed by a deeply rooted and highly skilled industrial labor force.



AMENITIES



9323 RUSH STREET

OFFERING MEMORANDUM

CONTACT US



Steve Chang

Founder & Managing Director | CA DRE #02028509

626-491-2668

stevechang@kw.com



view
package
online



package powered by intellcre.com