

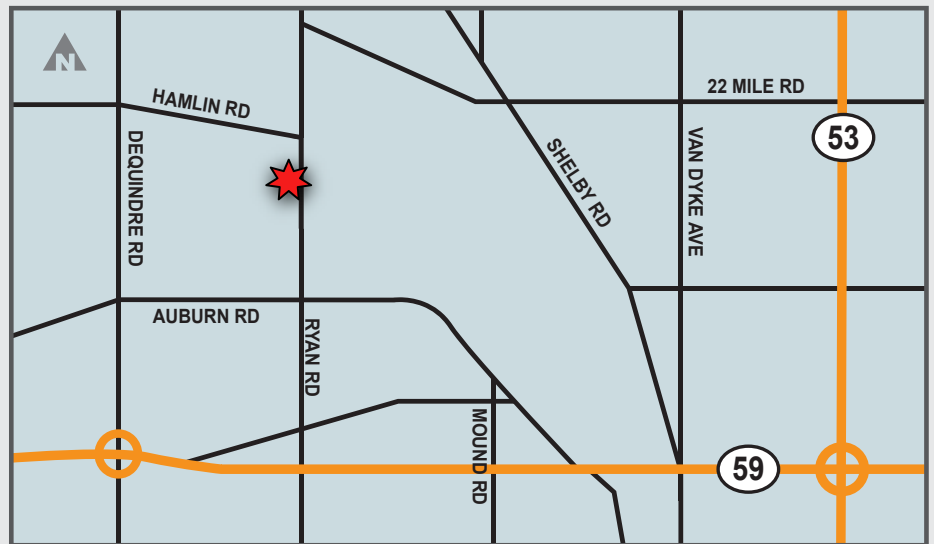
FOR LEASE

48111 RYAN RD.
SHELBY TWP., MICHIGAN



PROPERTY FEATURES

- 4 Acres Outdoor Storage Yard
- Gated and Secured Site
- ±340' of Frontage on Ryan Rd
- Within a 3-Mile Radius of M-53 & M-59 Highways
- Ideal for Construction Equipment and Contractor Yard Use



FOR DETAILS CONTACT

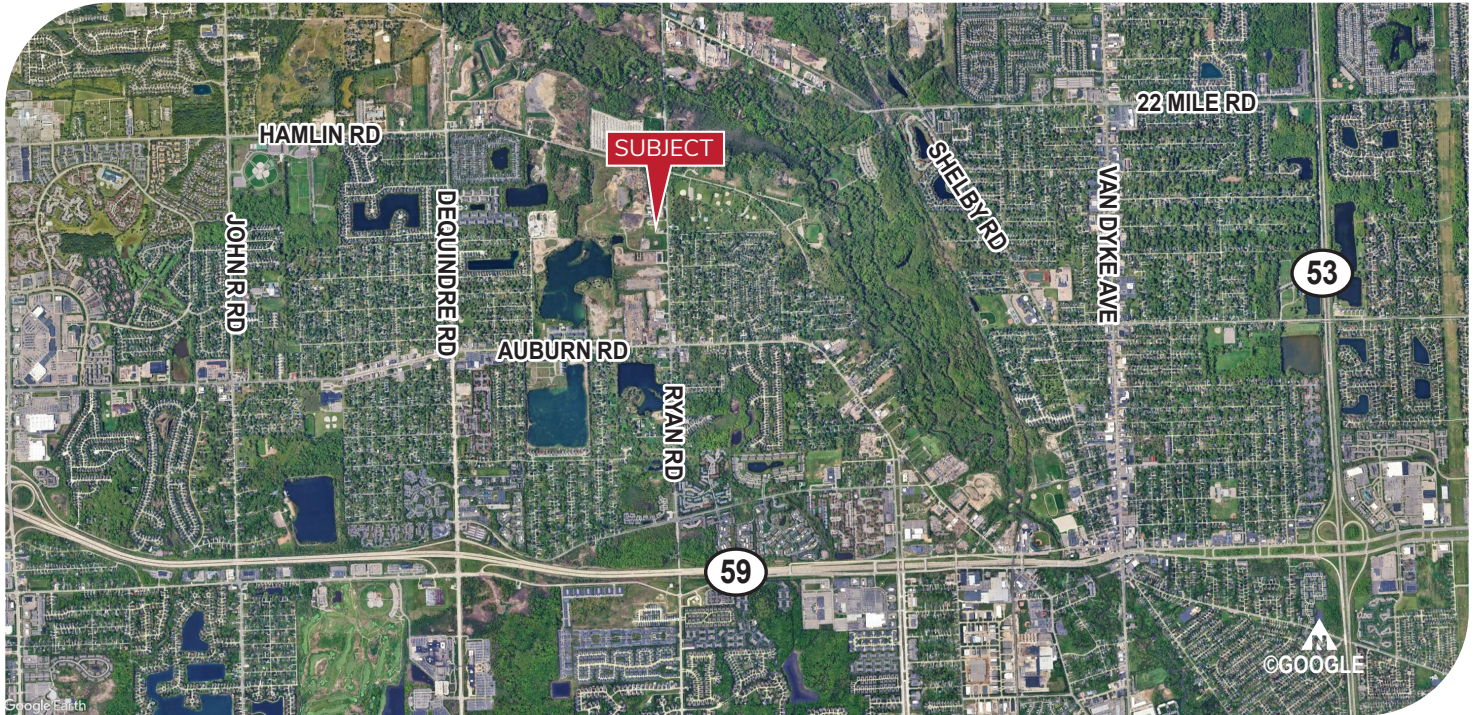
Giancarlo Pinterpe
giancarlo.pinterpe@lee-associates.com
(248) 567-8003

Adriano Docaj
adriano.docaj@lee-associates.com
(248) 567-8010

All information furnished regarding property for sale, rental or financing is from sources deemed reliable, but no warranty or representation is made to the accuracy thereof and some is submitted to errors, omissions, change of price, rental or other conditions prior to sale, lease or financing or withdrawal without notice. No liability of any kind is to be imposed on the broker herein.

FOR LEASE

48111 RYAN RD.
SHELBY TWP., MICHIGAN



PROPERTY TYPE:	Outside Storage
LAND (AC):	4
ZONING:	LM
PARCEL ID:	07-30-200-12

FOR DETAILS CONTACT

Giancarlo Pinterpe

giancarlo.pinterpe@lee-associates.com
(248) 567-8003

Adriano Docaj

adriano.docaj@lee-associates.com
(248) 567-8010

PROPERTY PRICING

TRANSACTION TYPE: Lease

ASKING LEASE RATE: \$2,500/Acre Per Month

This ±4.00-acre site is ideally suited for outside storage, offering a fully gated and secured layout for peace of mind. The property features approximately 340 feet of frontage along Ryan Road, providing excellent visibility and accessibility. Strategically located within a three-mile radius of both M-53 and M-59, the site offers convenient connectivity to major thoroughfares. The land benefits from a solid, well-compacted base, capable of supporting heavy equipment and minimizing the need for additional site work. Its layout and location make it particularly well-suited for construction equipment storage, contractor yards, and similar industrial outdoor uses.

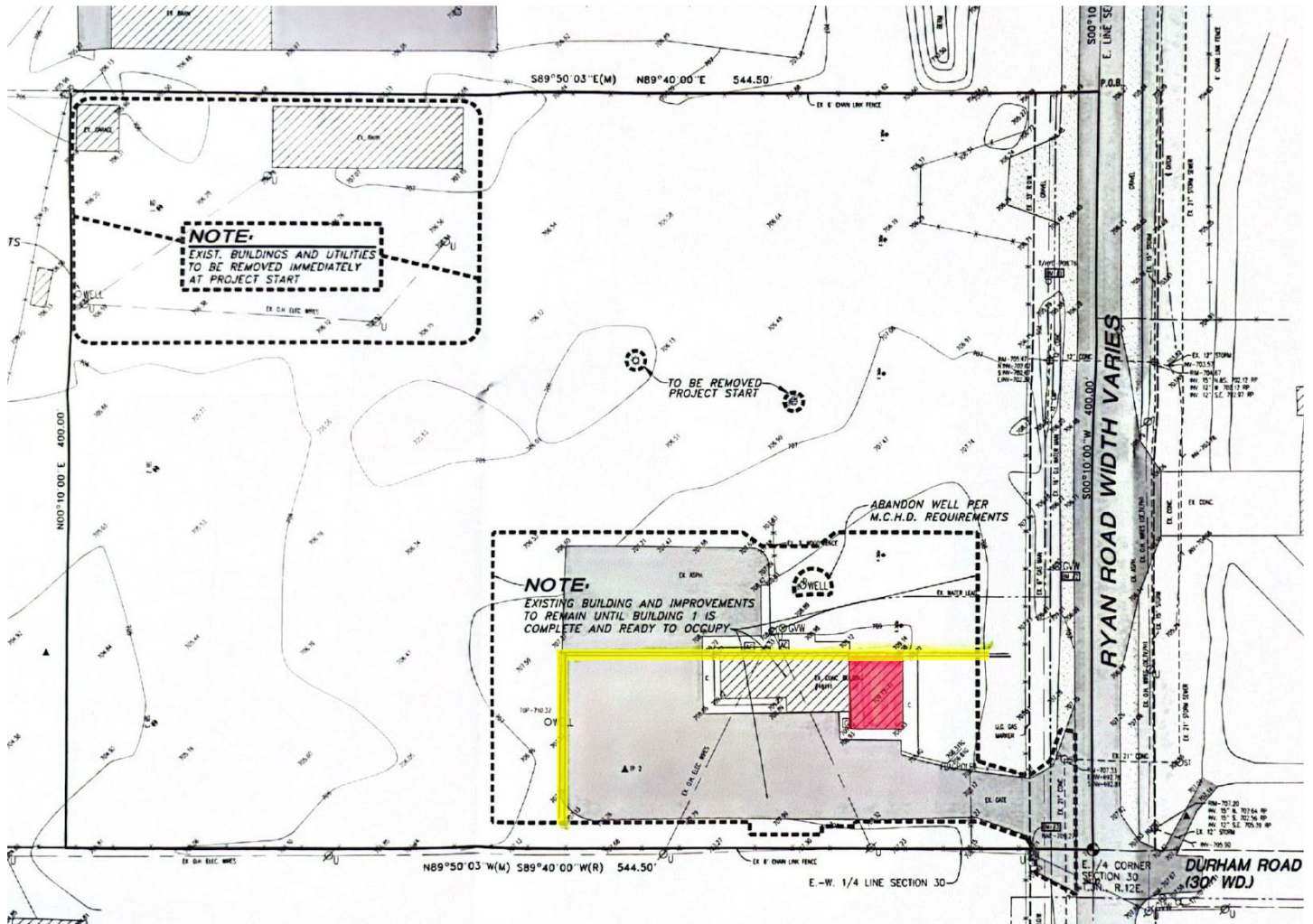
All information furnished regarding property for sale, rental or financing is from sources deemed reliable, but no warranty or representation is made to the accuracy thereof and some is submitted to errors, omissions, change of price, rental or other conditions prior to sale, lease or financing or withdrawal without notice. No liability of any kind is to be imposed on the broker herein.

FOR LEASE

48111 RYAN RD.
SHELBY TWP., MICHIGAN



COMMERCIAL REAL ESTATE SERVICES



FOR DETAILS CONTACT

Giancarlo Pinterpe
giancarlo.pinterpe@lee-associates.com
(248) 567-8003

Adriano Docaj
adriano.docaj@lee-associates.com
(248) 567-8010

All information furnished regarding property for sale, rental or financing is from sources deemed reliable, but no warranty or representation is made to the accuracy thereof and some is submitted to errors, omissions, change of price, rental or other conditions prior to sale, lease or financing or withdrawal without notice. No liability of any kind is to be imposed on the broker herein.