

PLAT OF SURVEY

LOCATION: West Rawson Avenue, Oak Creek, Wisconsin

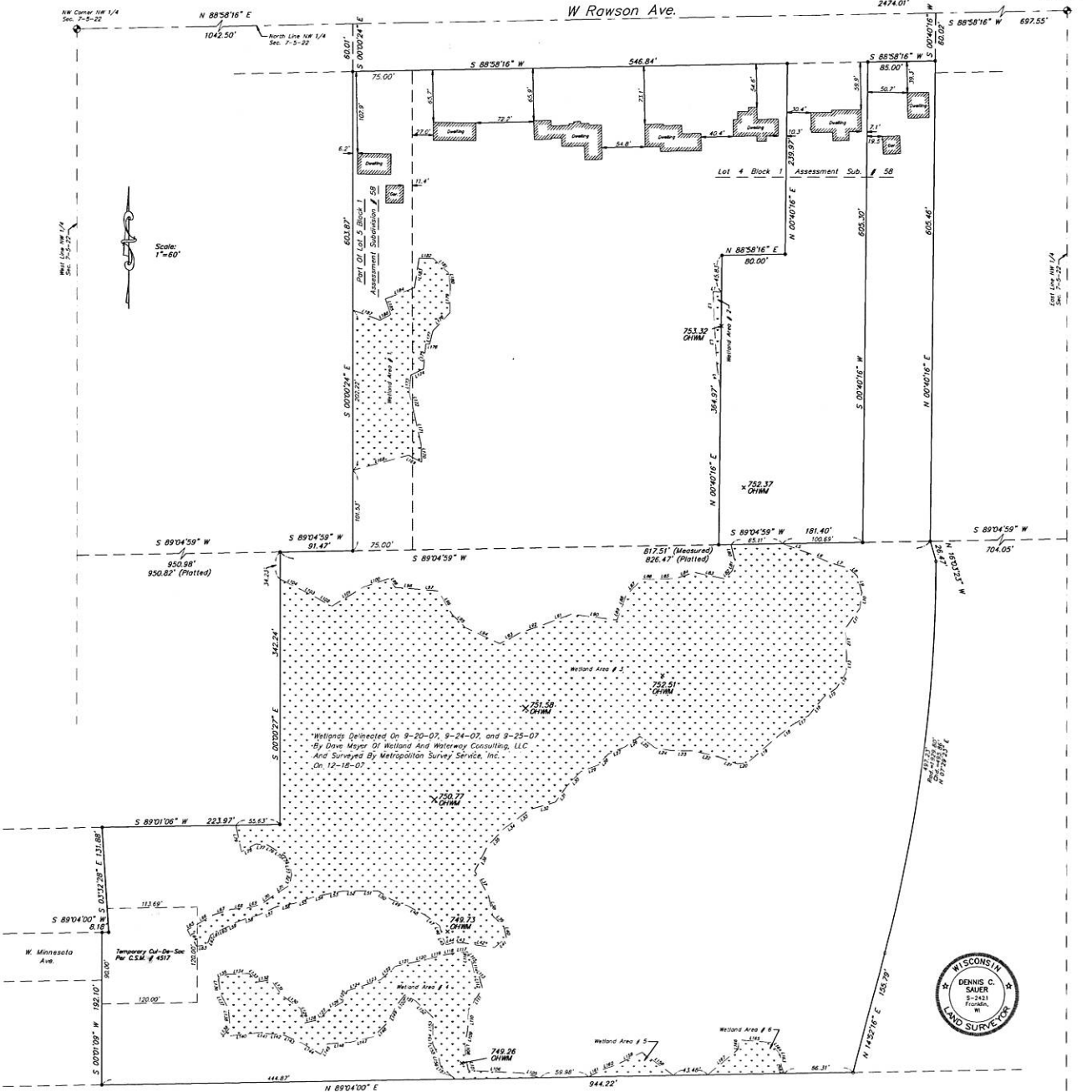
LEGAL DESCRIPTION:

All that part of Lots 4 and 5, in Block 1, in ASSESSMENT SUBDIVISION NO. 58, and lands being a part of the Northwest 1/4 of Section 7, Town 5 North, Range 22 East, in the City of Oak Creek, Milwaukee County, Wisconsin, bounded and described as follows: Commencing at the Northwest corner of the Northwest 1/4 of Section 7, thence N 88°58'16" E along the North line of said section, 1042.50 feet to a point; thence S 00°00'24" E, 60.01 feet to a found iron pipe and the point of beginning of the lands to be described; thence S 00°00'24" E, 603.87 feet to a found iron pipe; thence S 89°04'59" W, 91.47 feet to a found iron pipe; thence S 00°00'27" E, 342.24 feet to a found iron pipe; thence S 89°01'06" W, 223.97 feet to a found iron pipe; thence S 03°32'28" E, 131.88 feet to a found iron pipe; thence S 89°04'00" W, 8.18 feet to a found iron pipe; thence S 00°01'09" W, 192.10 feet to a found iron pipe; thence N 89°04'00" E, 244.22 feet to a point; thence N 14°52'16" E, 155.79 feet to a point; thence Northeasterly 497.23 feet along the arc of a curve whose center is to the West, whose radius is 1928.80 feet and chord bearing of N 07°29'23" E, 495.86 feet to a point; thence N 16°03'23" W, 26.47 feet to a found iron pipe; thence N 00°40'16" E, 605.46 feet to a point; thence S 89°04'59" W, 181.40 feet to a found iron pipe; thence S 88°58'16" W along said South line, 85.00 feet to a found iron pipe; thence S 00°40'16" E, 605.30 feet to a found iron pipe; thence S 89°04'59" W, 181.40 feet to a found iron pipe; thence N 00°40'16" E, 364.97 feet to a found iron pipe; thence N 88°58'16" E, 80.00 feet to a found iron pipe; thence N 00°40'16" E, 239.97 feet to a found iron pipe on the South line of West Rawson Avenue; thence S 88°58'16" W along said South line, 546.84 feet to the point of beginning. Said lands containing 946,594 square feet (21.78 acres).

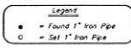
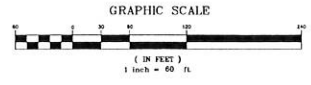
January 11, 2008
Revised Drawing January 25, 2008

Survey No. 101077

WELAND #1 LINE TABLE		WELAND #3 LINE TABLE		WELAND #5 LINE TABLE	
LINE	BEARING	LENGTH	LINE	BEARING	LENGTH
126	S 89°04'59" W	181.40	S 89°04'59" W	181.40	181.40
127	S 89°04'59" W	181.40	S 89°04'59" W	181.40	181.40
128	S 89°04'59" W	181.40	S 89°04'59" W	181.40	181.40
129	S 89°04'59" W	181.40	S 89°04'59" W	181.40	181.40
130	S 89°04'59" W	181.40	S 89°04'59" W	181.40	181.40
131	S 89°04'59" W	181.40	S 89°04'59" W	181.40	181.40
132	S 89°04'59" W	181.40	S 89°04'59" W	181.40	181.40
133	S 89°04'59" W	181.40	S 89°04'59" W	181.40	181.40
134	S 89°04'59" W	181.40	S 89°04'59" W	181.40	181.40
135	S 89°04'59" W	181.40	S 89°04'59" W	181.40	181.40
136	S 89°04'59" W	181.40	S 89°04'59" W	181.40	181.40
137	S 89°04'59" W	181.40	S 89°04'59" W	181.40	181.40
138	S 89°04'59" W	181.40	S 89°04'59" W	181.40	181.40
139	S 89°04'59" W	181.40	S 89°04'59" W	181.40	181.40
140	S 89°04'59" W	181.40	S 89°04'59" W	181.40	181.40
141	S 89°04'59" W	181.40	S 89°04'59" W	181.40	181.40
142	S 89°04'59" W	181.40	S 89°04'59" W	181.40	181.40
143	S 89°04'59" W	181.40	S 89°04'59" W	181.40	181.40
144	S 89°04'59" W	181.40	S 89°04'59" W	181.40	181.40
145	S 89°04'59" W	181.40	S 89°04'59" W	181.40	181.40
146	S 89°04'59" W	181.40	S 89°04'59" W	181.40	181.40
147	S 89°04'59" W	181.40	S 89°04'59" W	181.40	181.40
148	S 89°04'59" W	181.40	S 89°04'59" W	181.40	181.40
149	S 89°04'59" W	181.40	S 89°04'59" W	181.40	181.40
150	S 89°04'59" W	181.40	S 89°04'59" W	181.40	181.40
151	S 89°04'59" W	181.40	S 89°04'59" W	181.40	181.40
152	S 89°04'59" W	181.40	S 89°04'59" W	181.40	181.40
153	S 89°04'59" W	181.40	S 89°04'59" W	181.40	181.40
154	S 89°04'59" W	181.40	S 89°04'59" W	181.40	181.40
155	S 89°04'59" W	181.40	S 89°04'59" W	181.40	181.40
156	S 89°04'59" W	181.40	S 89°04'59" W	181.40	181.40
157	S 89°04'59" W	181.40	S 89°04'59" W	181.40	181.40
158	S 89°04'59" W	181.40	S 89°04'59" W	181.40	181.40
159	S 89°04'59" W	181.40	S 89°04'59" W	181.40	181.40
160	S 89°04'59" W	181.40	S 89°04'59" W	181.40	181.40
161	S 89°04'59" W	181.40	S 89°04'59" W	181.40	181.40
162	S 89°04'59" W	181.40	S 89°04'59" W	181.40	181.40
163	S 89°04'59" W	181.40	S 89°04'59" W	181.40	181.40
164	S 89°04'59" W	181.40	S 89°04'59" W	181.40	181.40
165	S 89°04'59" W	181.40	S 89°04'59" W	181.40	181.40
166	S 89°04'59" W	181.40	S 89°04'59" W	181.40	181.40
167	S 89°04'59" W	181.40	S 89°04'59" W	181.40	181.40
168	S 89°04'59" W	181.40	S 89°04'59" W	181.40	181.40
169	S 89°04'59" W	181.40	S 89°04'59" W	181.40	181.40
170	S 89°04'59" W	181.40	S 89°04'59" W	181.40	181.40
171	S 89°04'59" W	181.40	S 89°04'59" W	181.40	181.40
172	S 89°04'59" W	181.40	S 89°04'59" W	181.40	181.40
173	S 89°04'59" W	181.40	S 89°04'59" W	181.40	181.40
174	S 89°04'59" W	181.40	S 89°04'59" W	181.40	181.40
175	S 89°04'59" W	181.40	S 89°04'59" W	181.40	181.40
176	S 89°04'59" W	181.40	S 89°04'59" W	181.40	181.40
177	S 89°04'59" W	181.40	S 89°04'59" W	181.40	181.40
178	S 89°04'59" W	181.40	S 89°04'59" W	181.40	181.40
179	S 89°04'59" W	181.40	S 89°04'59" W	181.40	181.40
180	S 89°04'59" W	181.40	S 89°04'59" W	181.40	181.40
181	S 89°04'59" W	181.40	S 89°04'59" W	181.40	181.40
182	S 89°04'59" W	181.40	S 89°04'59" W	181.40	181.40
183	S 89°04'59" W	181.40	S 89°04'59" W	181.40	181.40
184	S 89°04'59" W	181.40	S 89°04'59" W	181.40	181.40
185	S 89°04'59" W	181.40	S 89°04'59" W	181.40	181.40
186	S 89°04'59" W	181.40	S 89°04'59" W	181.40	181.40
187	S 89°04'59" W	181.40	S 89°04'59" W	181.40	181.40
188	S 89°04'59" W	181.40	S 89°04'59" W	181.40	181.40
189	S 89°04'59" W	181.40	S 89°04'59" W	181.40	181.40
190	S 89°04'59" W	181.40	S 89°04'59" W	181.40	181.40
191	S 89°04'59" W	181.40	S 89°04'59" W	181.40	181.40
192	S 89°04'59" W	181.40	S 89°04'59" W	181.40	181.40
193	S 89°04'59" W	181.40	S 89°04'59" W	181.40	181.40
194	S 89°04'59" W	181.40	S 89°04'59" W	181.40	181.40
195	S 89°04'59" W	181.40	S 89°04'59" W	181.40	181.40
196	S 89°04'59" W	181.40	S 89°04'59" W	181.40	181.40
197	S 89°04'59" W	181.40	S 89°04'59" W	181.40	181.40
198	S 89°04'59" W	181.40	S 89°04'59" W	181.40	181.40
199	S 89°04'59" W	181.40	S 89°04'59" W	181.40	181.40
200	S 89°04'59" W	181.40	S 89°04'59" W	181.40	181.40



METROPOLITAN SURVEY SERVICE, INC.
REGISTERED LAND SURVEYORS AND CIVIL ENGINEERS
5307 S. 52nd Street Suite 140 Hales Corners, WI 53130
PH. (414) 523-5300 FAX (414) 523-9787
email address survey@blwll.com



WE warrant that we have surveyed the above described property and that the above plat is a true representation thereof and upon the size and location of the property, the existing buildings thereon, the location of all visible structures, easements and roadways and visible encroachments, if any.

THIS SURVEY IS MADE FOR THE EXCLUSIVE USE OF THE PRESENT OWNER OF THE PROPERTY, AND EACH THEREAFTER PURCHASER, WHOLLY OR SHARABLY IN TITLE THEREIN WITHIN ONE (1) YEAR FROM THE DATE HEREOF.

Dennis C. Sauer
Registered Land Surveyor # 5241

