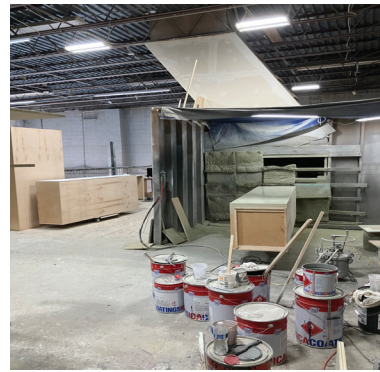




958 CHURCH ST, UNIT D BALDWIN, NY 11510

**FOR
LEASE**

3,450 SF Warehouse



Currently Occupied by Woodworker

PROPERTY INFORMATION

LOCATION	On Church St & Central Ave
FEATURES	<ul style="list-style-type: none"> • Ceilings: 24' • 45' wide; 50' deep • 1 Drive-in Door • 1,200 SF Mezzanine (with 12' clear under Mezzanine) • 6-minute walk to N35 bus

For complete offering information or inspection, please contact exclusive broker:

ED BRUCKSTEIN
EBRUCKSTEIN@CTNYC.COM
718-986-6587



Central Ave

Lease Price ▶ \$6,900/Month
(Available: 90 Days)

97-77 QUEENS BLVD. SUITE 1120, REGO PARK, NY 11374 • 718-937-8100 • WWW.CTNYC.COM

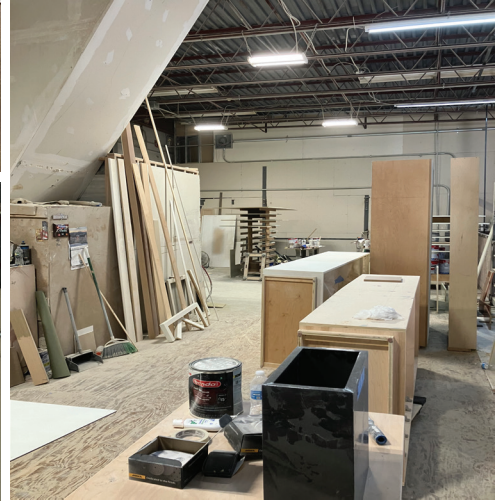
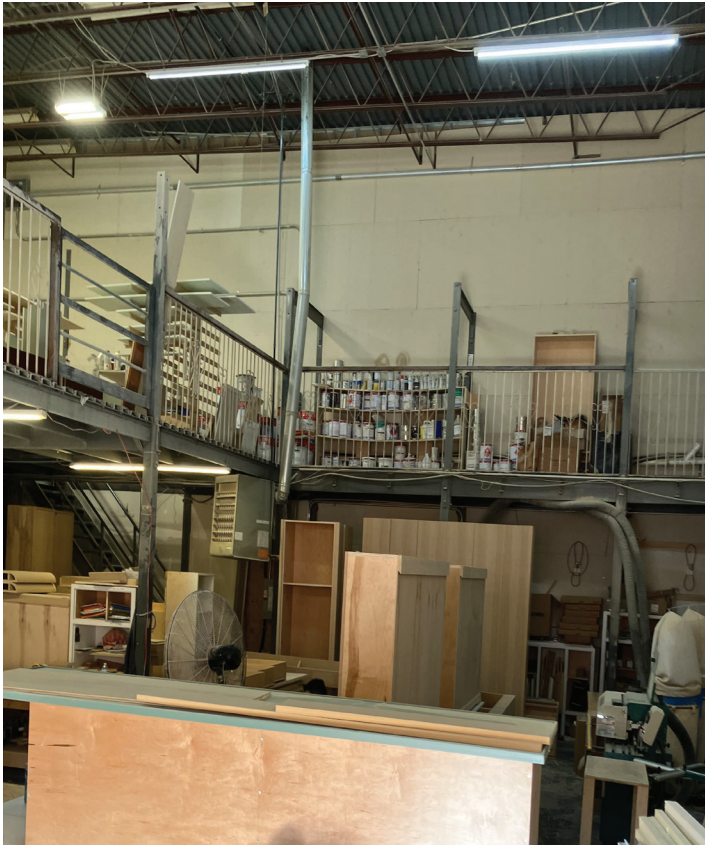
All information is from sources deemed reliable and is submitted subject to errors, omission, changes of price or other conditions, prior to sale, rent, and withdrawal without notice.



958 CHURCH ST, UNIT D BALDWIN, NY 11510

**FOR
LEASE**

3,450 SF Warehouse



97-77 QUEENS BLVD. SUITE 1120, REGO PARK, NY 11374 • 718-937-8100 • WWW.CTNYC.COM

All information is from sources deemed reliable and is submitted subject to errors, omission, changes of price or other conditions, prior to sale, rent, and withdrawal without notice.