

NSL CUTLER BUILDING

FOR LEASE



PROPERTY DETAILS

160 North Cutler Drive, North Salt Lake, UT 84054

**LEASE RATE: \$17.00/SF/YEAR
MODIFIED GROSS**

- 2,200 SF available
- Easy access to I-215 and I-15
- Just 10 minutes to Salt Lake City International Airport and Downtown Salt Lake City

2025 DEMOS



EST. POPULATION

1 MILE » **5,747**
3 MILE » **46,009**
5 MILE » **118,488**



EST. HOUSEHOLDS

1 MILE » **1,928**
3 MILE » **15,694**
5 MILE » **42,496**



EST. AVERAGE HH INCOME

1 MILE » **\$127,892**
3 MILE » **\$143,297**
5 MILE » **\$130,494**

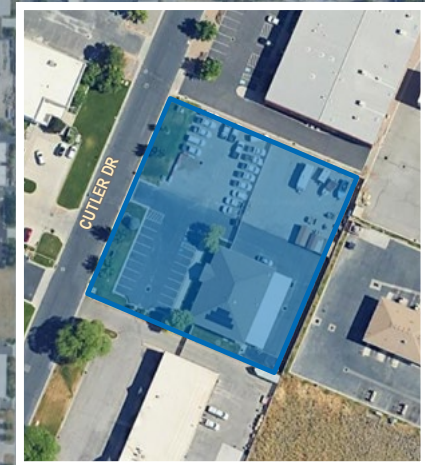


BRAXTON WILLIE
CCIM
bwillie@newmarkmw.com
direct 801.803.3334
[View Profile](#)

CHRIS FALK
CCIM, SIOR
cfalk@newmarkmw.com
direct 801.499.6514
[View Profile](#)

BRANSON WOOD
bwood@newmarkmw.com
direct 801.510.5207
[View Profile](#)

**FULL SERVICE
COMMERCIAL REAL ESTATE**
1410 S University Park Blvd, Ste 120
Clearfield, Utah 84015
Office 801.578.5580
www.newmarkmw.com



North Salt Lake Industrial Park

SITE



BRAXTON WILLIE
 CCIM
 bwillie@newmarkmw.com
 direct 801.803.3334
[View Profile](#)

CHRIS FALK
 CCIM, SIOR
 cfalk@newmarkmw.com
 direct 801.499.6514
[View Profile](#)

BRANSON WOOD
 bwood@newmarkmw.com
 direct 801.510.5207
[View Profile](#)

FULL SERVICE COMMERCIAL REAL ESTATE
 1410 S University Park Blvd, Ste 120
 Clearfield, Utah 84015
 Office 801.578.5580
www.newmarkmw.com

This statement with the information it contains is given with the understanding that all negotiations relating to the purchase, renting or leasing of the property described above shall be conducted through this office. The above information while not guaranteed has been secured from sources we believe to be reliable.