

# Walgreens

17051 Bear Valley Rd  
Hesperia, CA 92345

HESPERIA, CALIFORNIA

NNN SINGLE-TENANT INVESTMENT OPPORTUNITY



**TIM GENSKE**

Principal

[tgenske@lee-associates.com](mailto:tgenske@lee-associates.com)

626.240.2783

License ID 01034790



**BRUCE BAILEY**

The Bailey Group

[bruce@baileygrouponline.com](mailto:bruce@baileygrouponline.com)

818.943.9278

License ID 00697468

All information furnished regarding property for sale, rental or financing is from sources deemed reliable, but no warranty or representation is made to the accuracy thereof and same is submitted to errors, omissions, change of price, rental or other conditions prior to sale, lease or financing or withdrawal without notice. No liability of any kind is to be imposed on the broker herein.

# Walgreens

17051 BEAR VALLEY RD., HESPERIA, CA 92345

PRESENTED BY

TIM GENSKE  
Principal  
tgenske@lee-associates.com  
626.240.2783  
License ID 01034790

BRUCE BAILEY  
The Bailey Group  
bruce@baileygrouponline.com  
818.943.9278  
License ID 00697468

## TABLE OF CONTENTS

01 INVESTMENT OVERVIEW

02 INVESTMENT HIGHLIGHTS

03 AREA OVERVIEW

04 DEMOGRAPHICS

05 LEASE ABSTRACT

06 TENANT PROFILE

All materials and information received or derived from Lee & Associates - Pasadena its directors, officers, agents, advisors, affiliates and/or any third party sources are provided without representation or warranty as to completeness, veracity, or accuracy, condition of the property, compliance or lack of compliance with applicable governmental requirements, developability or suitability, financial performance of the property, projected financial performance of the property for any party's intended use or any and all other matters.

Neither Lee & Associates - Pasadena its directors, officers, agents, advisors, or affiliates makes any representation or warranty, express or implied, as to accuracy or completeness of the any materials or information provided, derived, or received. Materials and information from any source, whether written or verbal, that may be furnished for review are not a substitute for a party's active conduct of its own due diligence to determine these and other matters of significance to such party. Lee & Associates - Pasadena will not investigate or verify any such matters or conduct due diligence for a party unless otherwise agreed in writing.

EACH PARTY SHALL CONDUCT ITS OWN INDEPENDENT INVESTIGATION AND DUE DILIGENCE.

Any party contemplating or under contract or in escrow for a transaction is urged to verify all information and to conduct their own inspections and investigations including through appropriate third party independent professionals selected by such party. All financial data should be verified by the party including by obtaining and reading applicable documents and reports and consulting appropriate independent professionals. Lee & Associates - Pasadena makes no warranties and/or representations regarding the veracity, completeness, or relevance of any financial data or assumptions. Lee & Associates - Pasadena does not serve as a financial advisor to any party regarding any proposed transaction. All data and assumptions regarding financial performance, including that used for financial modeling purposes, may differ from actual data or performance. Any estimates of market rents and/or projected rents that may be provided to a party do not necessarily mean that rents can be established at or increased to that level. Parties must evaluate any applicable contractual and governmental limitations as well as market conditions, vacancy factors and other issues in order to determine rents from or for the property.

Legal questions should be discussed by the party with an attorney. Tax questions should be discussed by the party with a certified public accountant or tax attorney. Title questions should be discussed by the party with a title officer or attorney. Questions regarding the condition of the property and whether the property complies with applicable governmental requirements should be discussed by the party with appropriate engineers, architects, contractors, other consultants and governmental agencies. All properties and services are marketed by Lee & Associates - Pasadena in compliance with all applicable fair housing and equal opportunity laws.

OFFERING MEMORANDUM  
**WALGREENS - HESPERIA, CALIFORNIA**

17051  
**BEAR VALLEY RD**  
HESPERIA, CA 92345



**INVESTMENT OVERVIEW**

01



**Offering Price**  
\$4,635,000



**Building SF**  
±15,120



**CAP Rate**  
7.25%



**Land Size**  
±1.12 Acres  
±48,922 SF



**NOI**  
\$336,000



**Ownership Type**  
Fee Simple

OFFERING MEMORANDUM  
**WALGREENS - HESPERIA, CALIFORNIA**

17051  
**BEAR VALLEY RD**  
HESPERIA, CA 92345



## INVESTMENT HIGHLIGHTS

### TROPHY SINGLE-TENANT NNN LEASE WITH WALGREENS

Walgreens Pharmacy has occupied the site for over 23 years and has just exercised a new 5-year option to extend

Walgreens is one of the world's most well-known drugstore chains with over 8,500 locations throughout the US

### CURRENTLY WALGREEN'S ONLY 24-HOUR STORE IN THIS HIGH-DESERT REGION

**CORNER LOCATION** - Located at the corner of Bear Valley Road and Hesperia Road with tremendous visibility and access from both streets

Location is proximate to both residential and commercial uses

### IDEAL 1031 EXCHANGE OPPORTUNITY

Net lease structure is ideal for a passive investor looking for stable cash flow with zero landlord maintenance obligations



### DEMOGRAPHICS

More than **7,785** people within a **1-mile** radius with an Average Household Income of **\$70,576**.

More than **68,606** people within a **3-mile** radius with an Average Household Income of **\$85,398**.

More than **188,456** people within a **5-mile** radius with an Average Household Income of **\$81,899**.

## AREA OVERVIEW

03

**HESPERIA** is a city in San Bernardino County, California, United States. It is located 35 miles north of the city of San Bernardino in Victor Valley and surrounded by the Mojave Desert.



### HISTORY

Hesperia was incorporated in 1988 but its modern history dates back to 1885 when the Atchison Topeka and Santa Fe Railroad tracks were completed.

Because of its relatively high elevation and the unique and moderate weather patterns of the region, Hesperia is part of what is locally called the High Desert. The name "Hesperia" means "western land".

### QUALITY OF LIFE

Adorned by the San Bernardino and San Gabriel mountain ranges, Hesperia offers the best of the Southern California lifestyle at a price that families can afford. Clean air, over 350 days of sunshine, and deep blue skies entice businesses and residents to Hesperia.

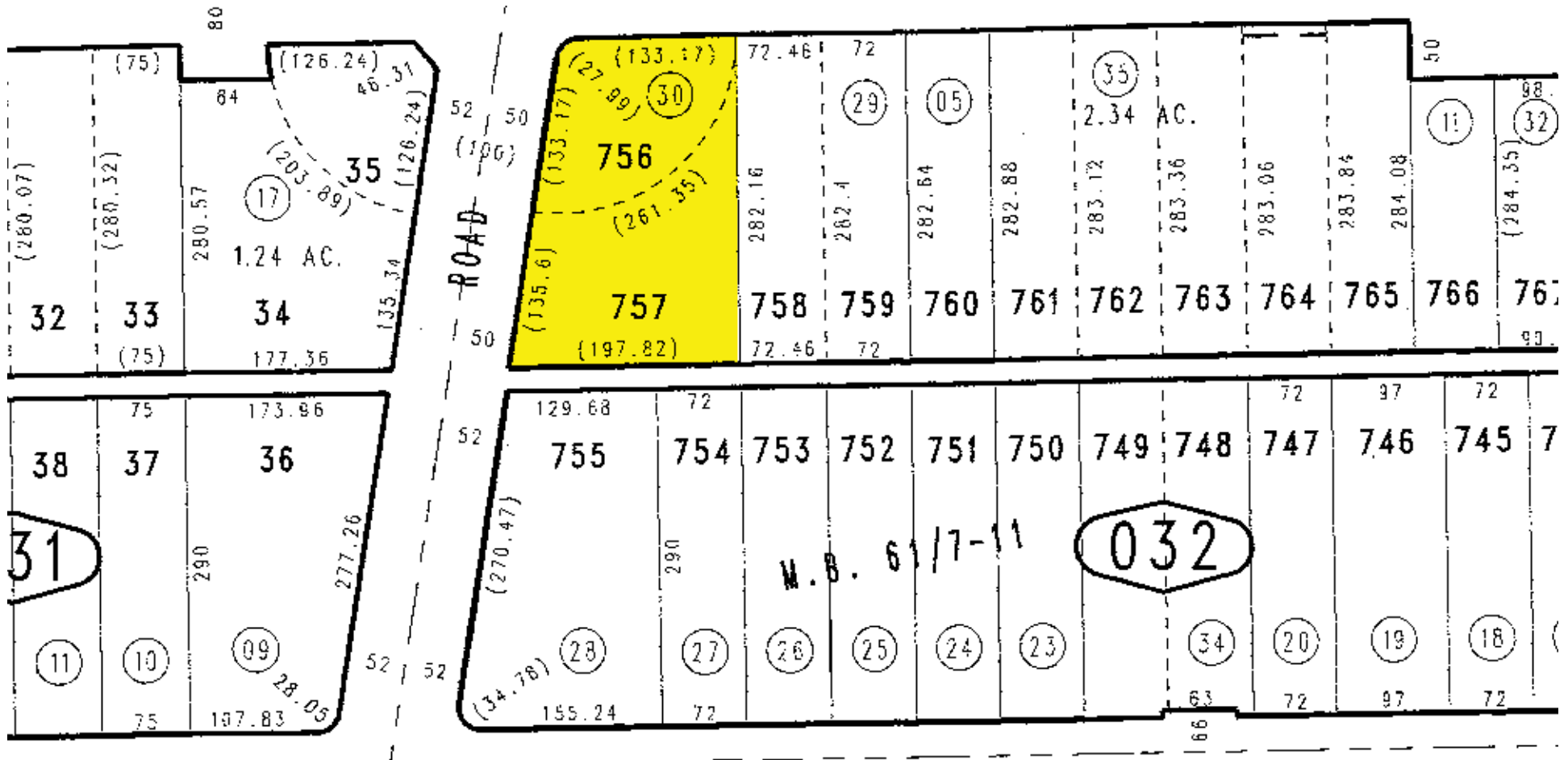
### ECONOMY

The major employment sectors in Hesperia are construction, transportation and warehousing per Data USA in 2023.

### POPULATION

As of the 2020 census, the city had a population of 99,818.

**PLAT MAP**



## DEMOGRAPHICS

POPULATION	1 MILES	3 MILES	5 MILES
2024 Population	7,785	68,606	188,456
Median age	32.9	35.4	34.6

HOUSEHOLDS & INCOME	1 MILES	3 MILES	5 MILES
Total households	2,458	22,141	58,817
Total persons per HH	3.1	3	3.1
Average HH income	\$70,576	\$85,398	\$81,899
Average house value	\$278,823	\$343,332	\$341,339

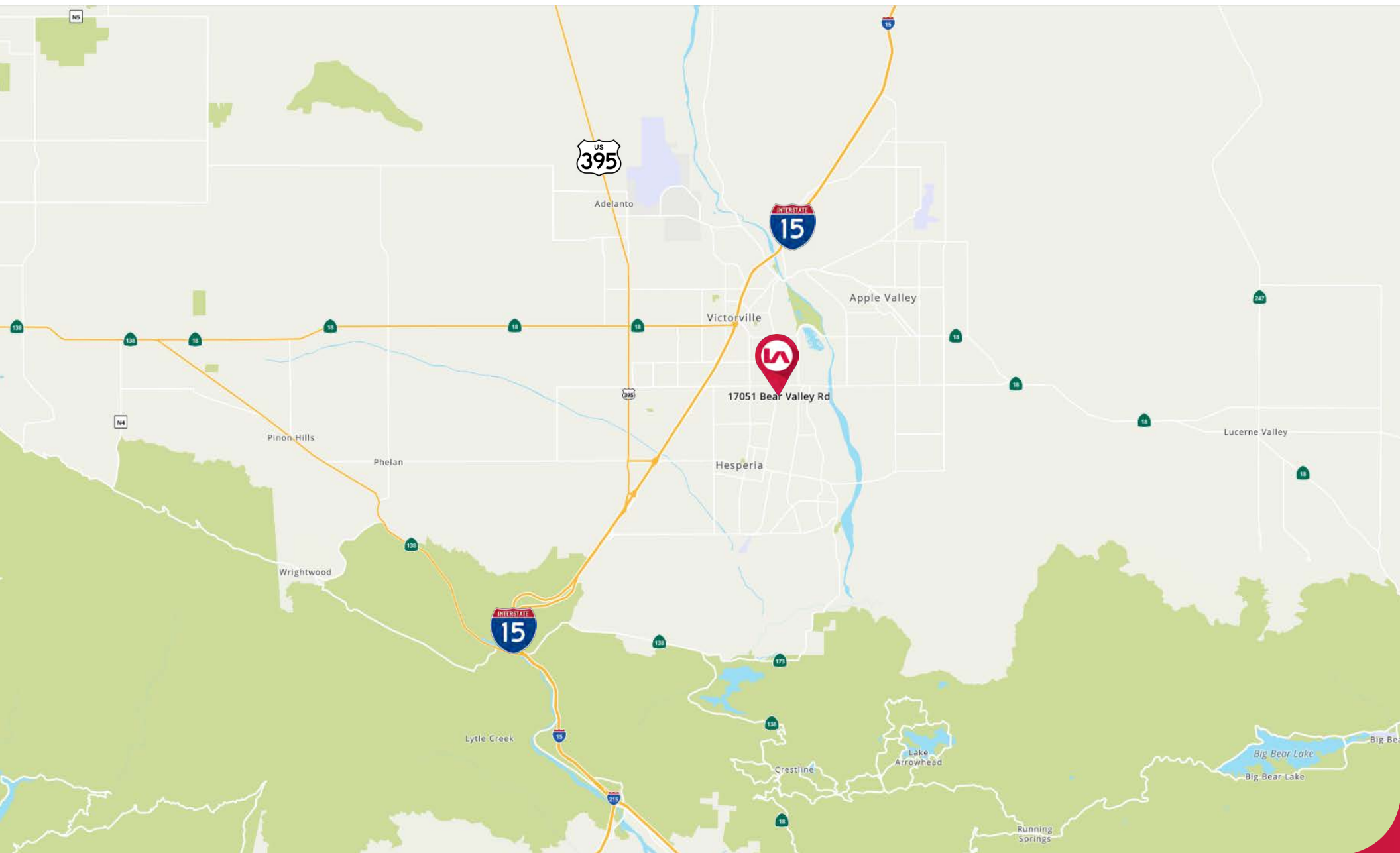
POPULATION BY RACE	1 MILES	3 MILES	5 MILES
White	2,212	24,447	64,853
Black	824	6,725	19,070
American Indian/Alaskan Native	87	923	2,617
Asian	355	2,763	6,523
Hawaiian & Pacific Islander	33	292	757
Two or More Races	4,274	33,456	94,636
Hispanic Origin	4,621	36,285	103,525

*\*Demographic data derived from Co-Star 2024*



OFFERING MEMORANDUM  
**WALGREENS - HESPERIA, CALIFORNIA**

17051  
**BEAR VALLEY RD**  
HESPERIA, CA 92345



## LEASE ABSTRACT

TENANT	Walgreen Co.
PROPERTY ADDRESS	17051 Bear Valley Rd., Hesperia, CA 92345
LEASE START DATE	July 15, 2002
LEASE EXPIRATION	October 31, 2032
TERM REMAINING	7.25 years
CURRENT BASE RENT	\$336,000
RENEWAL OPTIONS	<i>Ten (10) Option Periods:</i> Option 1: Five (5) year period ending October 31, 2037 Option 2: Five (5) year period ending October 31, 2042 Option 3: Five (5) year period ending October 31, 2047 Option 4: Five (5) year period ending October 31, 2052 Option 5: Five (5) year period ending October 31, 2057 Option 6: Five (5) year period ending October 31, 2062 Option 7: Five (5) year period ending October 31, 2067 Option 8: Five (5) year period ending October 31, 2072 Option 9: Five (5) year period ending October 31, 2077 Option 10: Five (5) year period ending October 31, 2082
RENT	<i>Rent Increases:</i> November 1, 2032 - October 31, 2042: \$369,600.00/YR November 1, 2042 - October 31, 2052: \$406,560.00/YR November 1, 2052 - October 31, 2062: \$447,216.00/YR November 1, 2062 - October 31, 2072: \$491,937.00/YR November 1, 2072 - October 31, 2082: \$541,131.00/YR
TAXES	Tenant shall pay all property taxes and assessments
REPAIRS & MAINTENANCE	Tenant shall maintain, at its sole cost and expense, the Premises and every part thereof in good order, condition, and repair, and in material compliance with all applicable laws
INSURANCE	Tenant pays
COMMON AREA MAINTENANCE	Tenant's expense

05



OFFERING MEMORANDUM  
**WALGREENS - HESPERIA, CALIFORNIA**

17051  
**BEAR VALLEY RD**  
HESPERIA, CA 92345

**TENANT PROFILE**

# Walgreens

Walgreen Co. operates as a drugstore chain in the United States. Its drugstores are engaged in the retail sale of prescription and non-prescription drugs and general merchandise, including household products, convenience and fresh foods, personal care, beauty care, photofinishing and candy.

The company offers pharmacy, health and wellness solutions, which include retail, specialty pharmacy, infusion and respiratory services, mail service, convenient care clinics and worksite clinics. Walgreen offers pharmacy services that provide customers nationwide access to a variety of medications, services and programs for managing complex and chronic health conditions. The company offers its customers infusion therapy services, including the administration of intravenous medications for cancer treatments, chronic pain, heart failure, and other infections and disorders. It provides these infusion services at home, at the workplace, in a physician's office or in a Walgreens alternate treatment site. The company provides clinical services, such as laboratory monitoring, medication profile review, nutritional assessments, patient and caregiver education. Its advanced pharmacy system offers pharmacists easy access to patient prescription records, which allows access to refills and emergency supplies at any of its pharmacies, eases prescription transfers, and enables any Walgreens pharmacist to provide ongoing treatment consultation. The company's websites allow consumers to purchase general merchandise, including beauty, personal care, home medical equipment, contact lens, vitamins and supplements and other health and wellness solutions. It also offers services through Take Care Health Systems, which manages its Take Care Clinics at select Walgreens drugstores throughout the country and Take Care Health Employer Solutions that manages primary care, health and wellness, occupational health, pharmacy and fitness centers at large employer campuses. The company was founded by Charles R. Walgreen, Sr. in 1901 and is headquartered in Deerfield, IL.

Source: Forbes <https://www.forbes.com/companies/walgreen/>

06



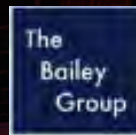
**TIM GENSKE**

Principal

[tgenske@lee-associates.com](mailto:tgenske@lee-associates.com)

626.240.2783

License ID 01034790



**BRUCE BAILEY**

The Bailey Group

[bruce@baileygrouponline.com](mailto:bruce@baileygrouponline.com)

818.943.9278

License ID 00697468