



McNulty Group
Incorporated

FOR LEASE

325 Dane Lane
Longwood, FL 32750



Asking Rate: \$7,500/month
NNN

Building Size: 2,800 ± SF

Warehouse: 1,760 ± SF

Office: 1,040 ± SF

Canopies: 2,730 ± SF

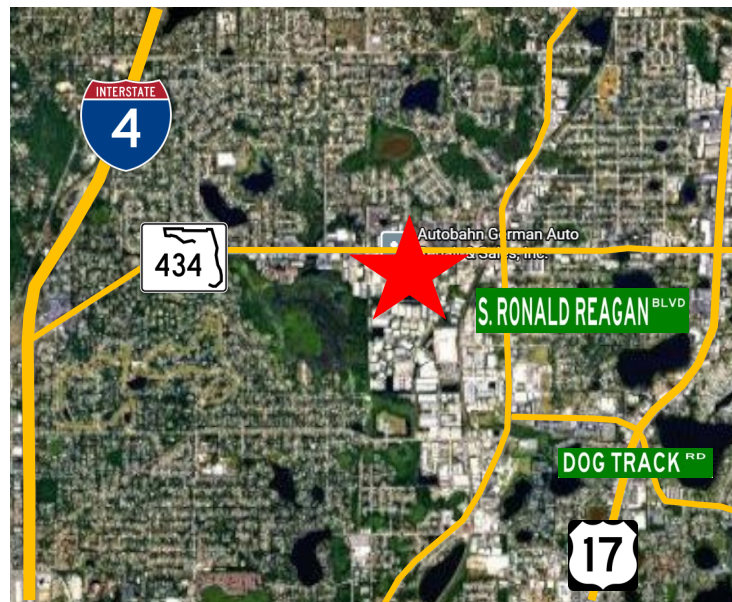
Ceiling Height: 13.5'-18'

Doors: (2) Grade 10' x 14'

Land Size: 0.89 acres

Additional Features

- Fenced
- Yard Space



McNulty Group, Inc. is the agent of the Landlord or Seller of this property and will be paid by the Landlord or Seller. All information furnished with respect to the subject property has been obtained from sources deemed reliable. No representation as to accuracy thereof is made. This offering is subject to errors, omissions, prior sales or withdrawal without notice.

Cole Wynia

Sales Associate

Cole@mcnultygroupinc.com

(407) 668-5537 Direct

McNulty Group Inc.

2315 Lynx Lane, Suite 6

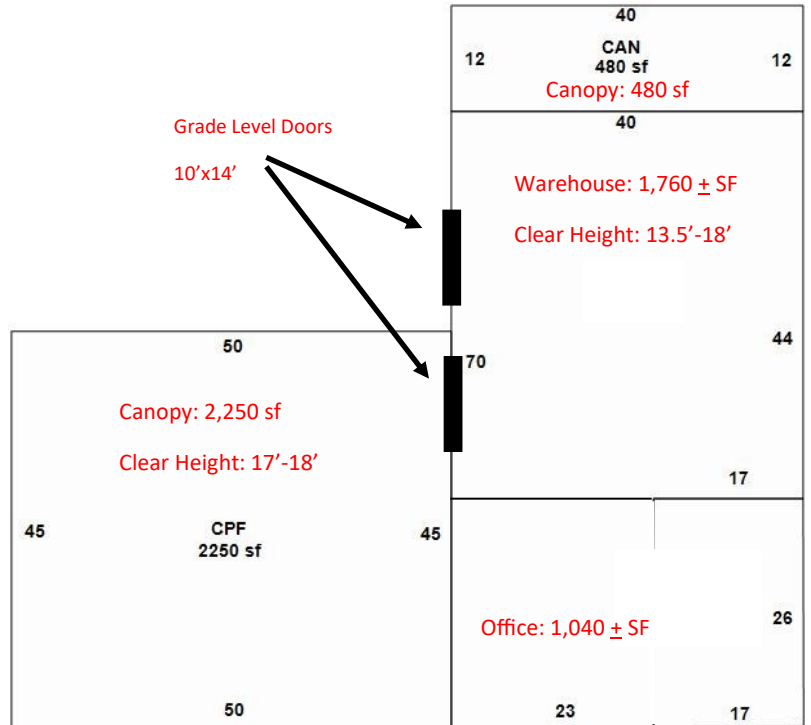
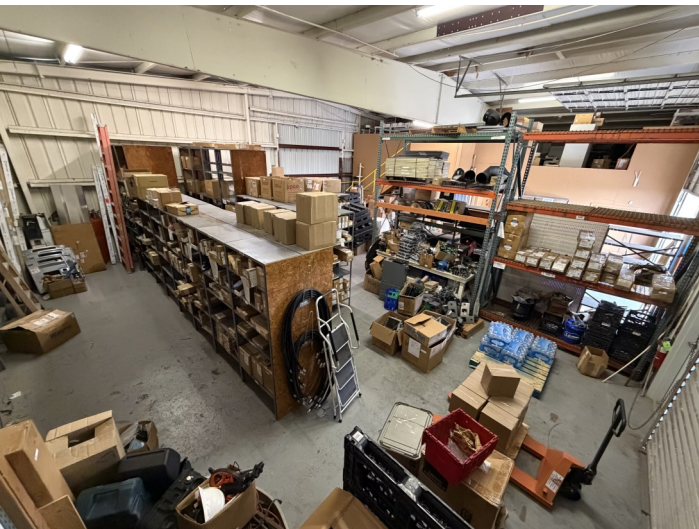
Orlando, Florida 32804

407-532-3441

FOR LEASE

325 Dane Lane

Longwood, FL 32750



Cole Wynia
Sales Associate

Cole@mcnultygroupinc.com
(407) 668-5537 Direct

mcnultygroupinc.com

McNulty Group Inc.

2315 Lynx Lane, Suite 6
Orlando, Florida 32804
407-532-3441