

1021 Darrington Dr

Cary, NC

OFFICE FOR LEASE





PROPERTY SUMMARY

Address	1021 Darrington Dr, Cary, NC
Suite	205
Size	2,001 SF
Available	3/1/2025
Lease Rate	\$28.50/SF NNN
TICAM	\$6.50/SF

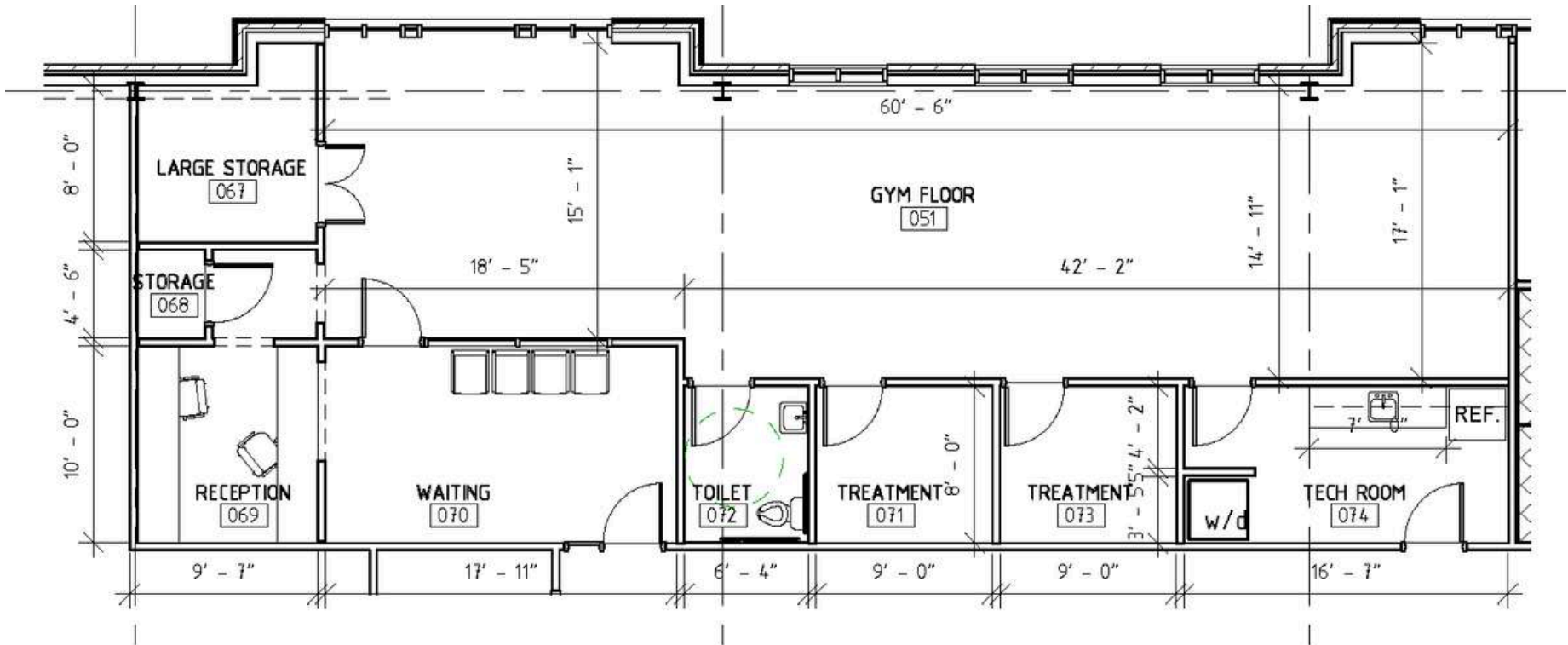


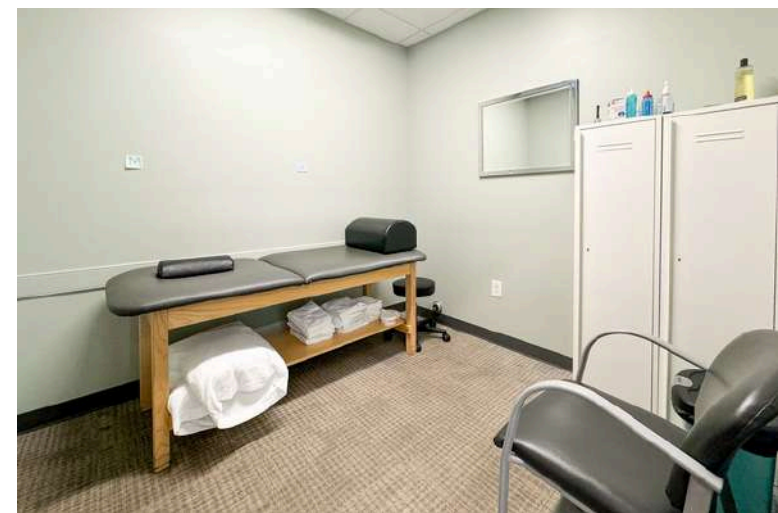
HIGHLIGHTS

- Located off of NW Cary Parkway and James Jackson Avenue, less than a mile from Hwy 54
- Space was formally used by a physical therapist
- In close proximity to numerous medical tenants, including Generations Family Practice (14,000 SF)
- Nearby Prestonwood Country Club offers 54 holes of golf and is surrounded by 35 separate residential subdivisions, all managed by Preston Community Association
- Ample Parking On-Site

FLOOR PLAN

1021 DARRINGTON DR, STE 205
2,001 SQ. FT.







DEMOGRAPHIC INFO

	1 MILE	3 MILE	5 MILE
2025 Population	10,674	97,306	203,521
2030 Projected Population	11,455	104,398	203,521
2025 Households	4,468	39,513	79,903
Avg. HH Income	\$176,793	\$1.5 B	\$3.1B



Preston Ridge Apartments Cary
600 Multifamily Units

- 54 holes of golf
- 15 tennis courts
- Full-service fitness and aquatics center



SITE

Franklin Plastic Surgery

- Generations Family Practice
- Quest Diagnostics



CONTACT

Trent Ragland, Broker
(C) 919.815.8414 (O) 919.289.1338
tragland@atlasstark.com

ATLAS  STARK

Atlas Stark Holdings LLC | 2020 Progress Ct, Suite 130A, Raleigh, NC
All information contained herein is from sources deemed reliable;
however, no representation or warranty is made to the accuracy thereof.