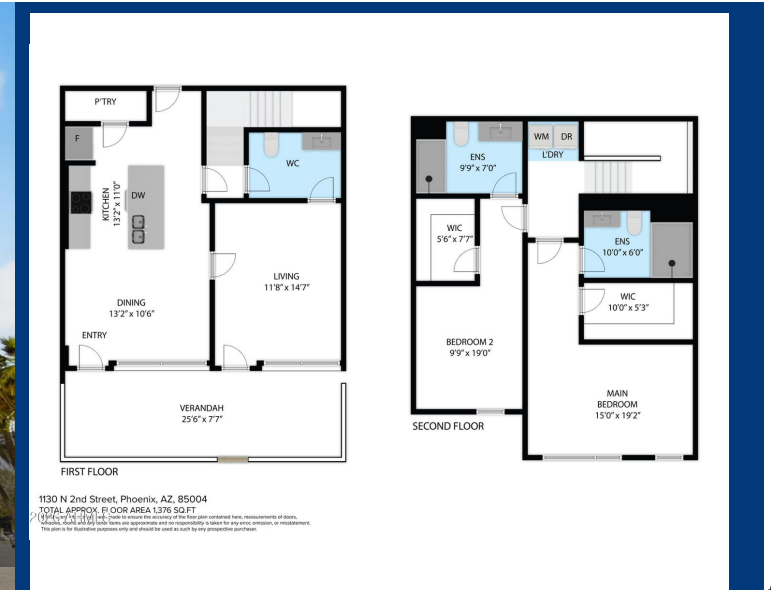


MODERN LIVE/WORK CONDO

in the heart of downtown Phoenix



1130 N 2ND ST 102, Phoenix, AZ 85004
2 BEDS | 3 BATHS | 1,378 SF



PROPERTY HIGHLIGHTS

- Modern live/work condo in the heart of downtown Phoenix
- Ideal for professionals, creatives, or entrepreneurs seeking flexible space
- Two-story layout with 2 ensuite bedrooms and 2.5 baths
- Street-level commercial suite — perfect for office, studio, or client-facing business
- Industrial design with polished concrete floors and roll-up glass doors
- Private patio with park views for indoor-outdoor flow
- Open kitchen and living area for stylish urban comfort
- Upstairs suites offer privacy and separation from work areas
- Prime location across from Hance Park and near dining, arts, light rail, ASU, and local hotspots
- Includes two covered parking spaces and access to a community pool
- No short-term rentals permitted



Ryan Gerdes

REALTOR®

602-358-5001

rgerdesnewhomes@gmail.com

2355 W Utopia Road, Ste 101, Phoenix, AZ 85027

WestUSA
REALTY

