

5788 W ADAMS BLVD LOS ANGELES

FOR LEASE

±4,650 RSF to ±16,143 RSF
CREATIVE OFFICE | NEW CONSTRUCTION



redcar
development

INDUSTRYPARTNERS.COM
310 395 5151
CA BRE No. 01900833

SCOTT RIGSBY
sr@industrypartners.com
CA BRE No. 01252835

ELLIOT SCHWARTZ
es@industrypartners.com
CA BRE No. 02020686

INDUSTRY

NEW CONSTRUCTION



DETAILS

DETAILS & TERMS

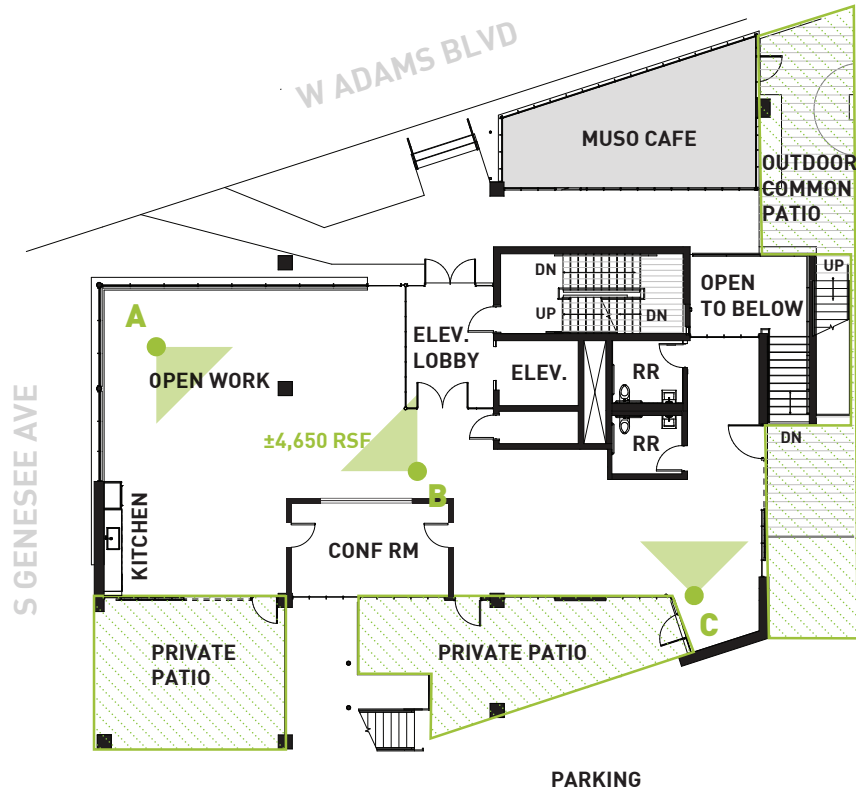
WHAT'S DIFFERENT

FLOOR	AREA	RATE	TERM
1ST FLOOR	± 4,650 RSF	\$4.45/SF/Mo. NNN	Negotiable
3RD FLOOR	± 5,993 RSF	\$4.45/SF/Mo. NNN	Negotiable
4TH PH	± 5,500 RSF	\$4.45/SF/Mo. NNN	Negotiable

- Custom:** Custom steel windows and doors using the highest design and material standards
- Secure:** Latch™ keyless entry with smart personalized access / Gated parking
- Versatile:** Private usable outdoor patios and decks (on all floors)
- Location:** 10-minute walk to the closest Expo Line Metro Station / 83/100 Walkscore
- Convenience:** Direct entry to each floor via elevator as well as interior/external stairwells / Lower level bike racks, shower and common areas

OCCUPANCY	PARKING
Immediate	2 per 1,000 SF w/Valet & Offsite
	RATE/PASS/MO. \$200

1ST FLOOR - 5788 | ± 4,650 RSF



A— OFFICE INTERIOR



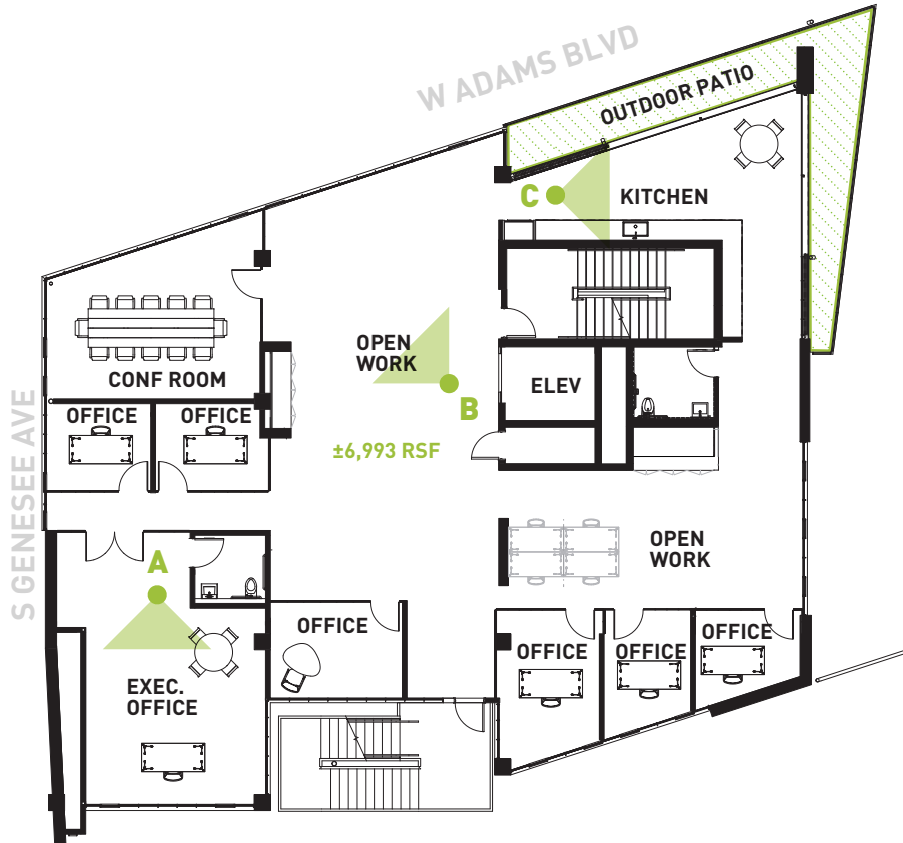
B— KITCHEN



C— OFFICE EXTERIOR

FLOOR PLAN | 3RD FLOOR

3RD FLOOR - 5788 | ± 5,993 RSF



A— OFFICE INTERIOR



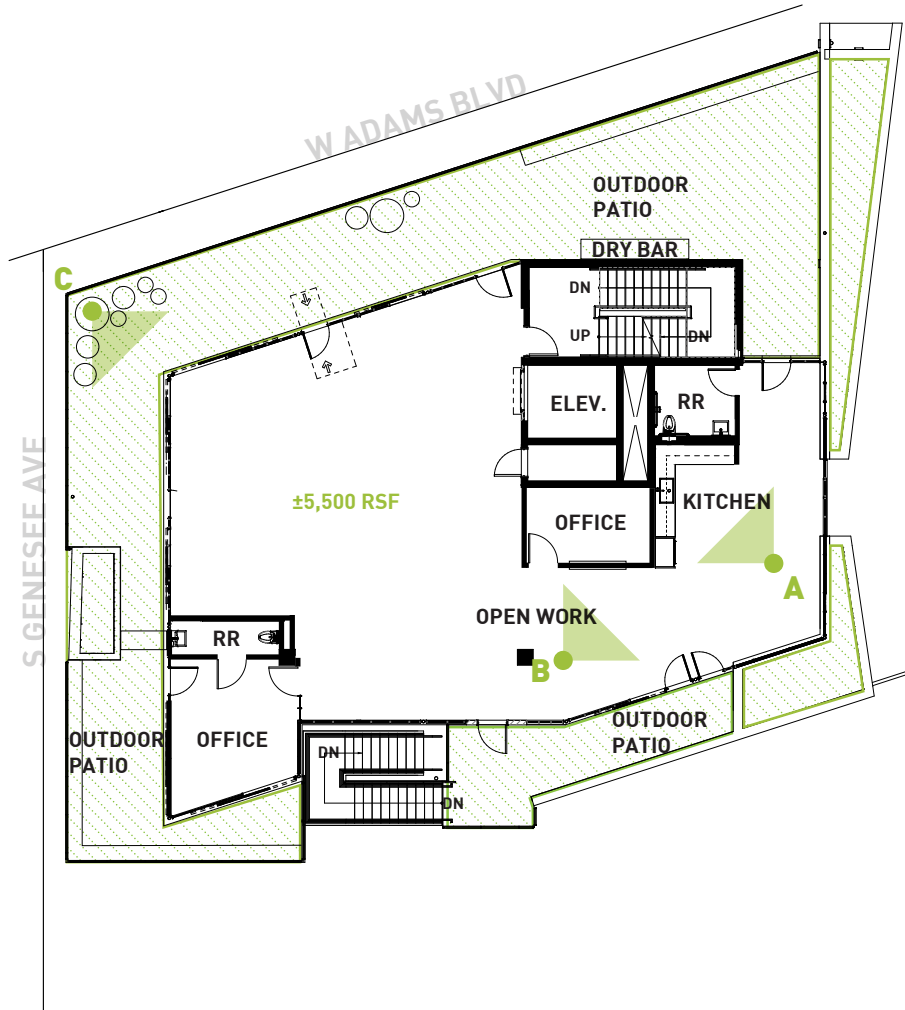
B— KITCHEN



C— OFFICE EXTERIOR

FLOOR PLAN | 3RD FLOOR

4TH FLOOR - 5788 | ± 5,500 RSF



A— KITCHEN



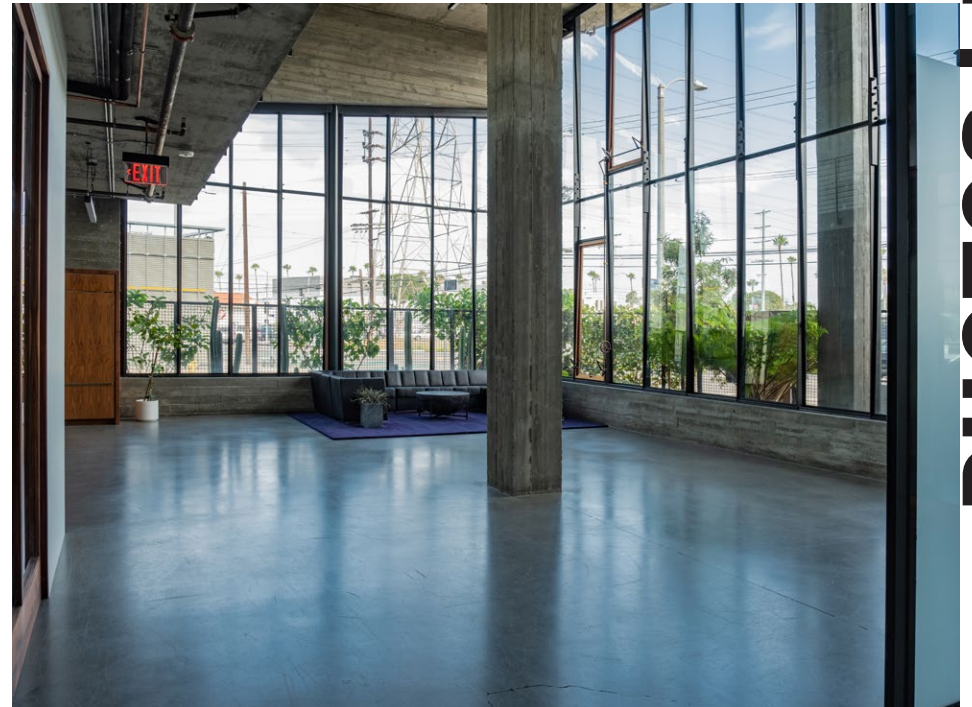
B— OFFICE INTERIOR



C— TERRACE

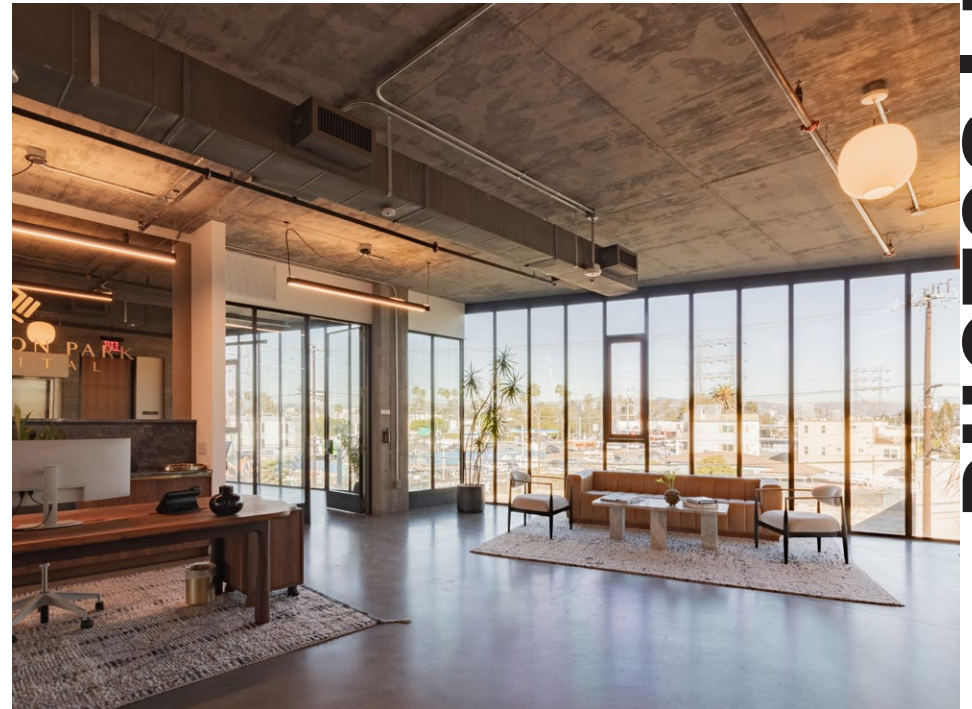
FLOOR PLAN | 4TH PH

INTERIOR - FIRST FLOOR

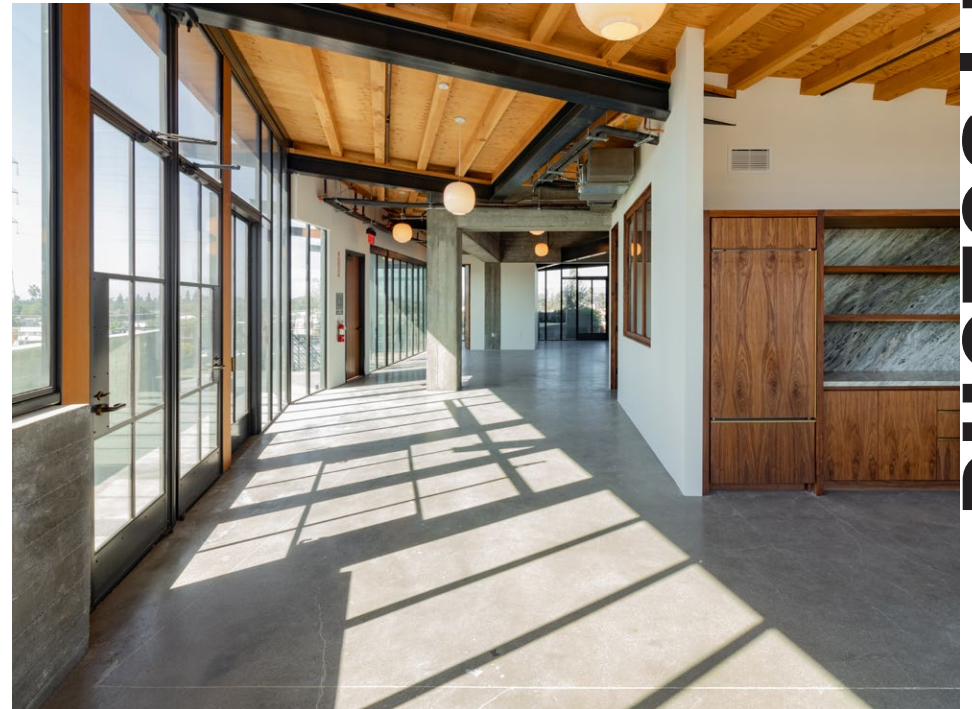


PHOTOS | 5788 (1ST)

INTERIOR - THIRD FLOOR



PHOTOS | 5788 (3RD)



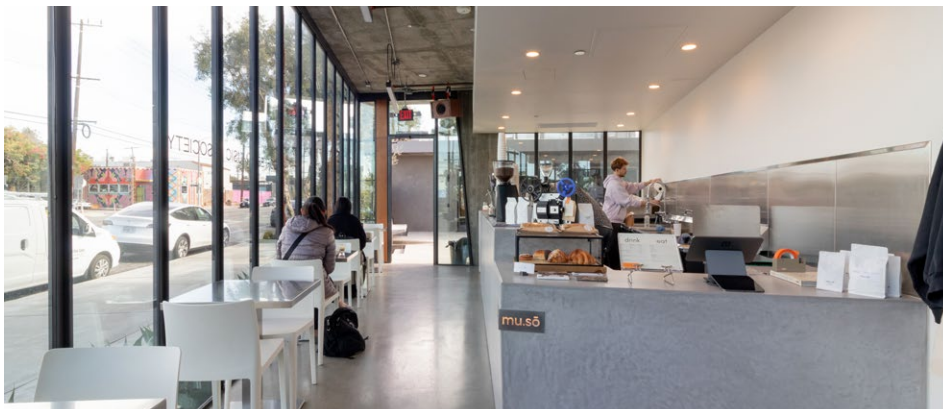
INTERIOR - THIRD FLOOR

PHOTOS | 5788 (4TH)

mu.sō

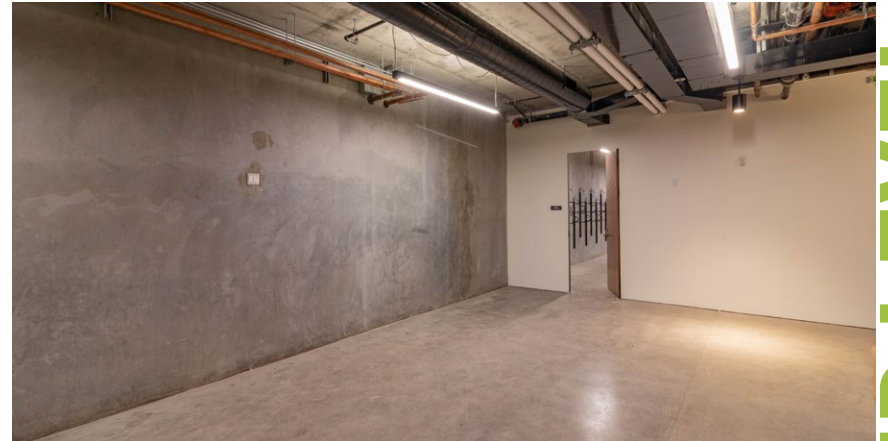
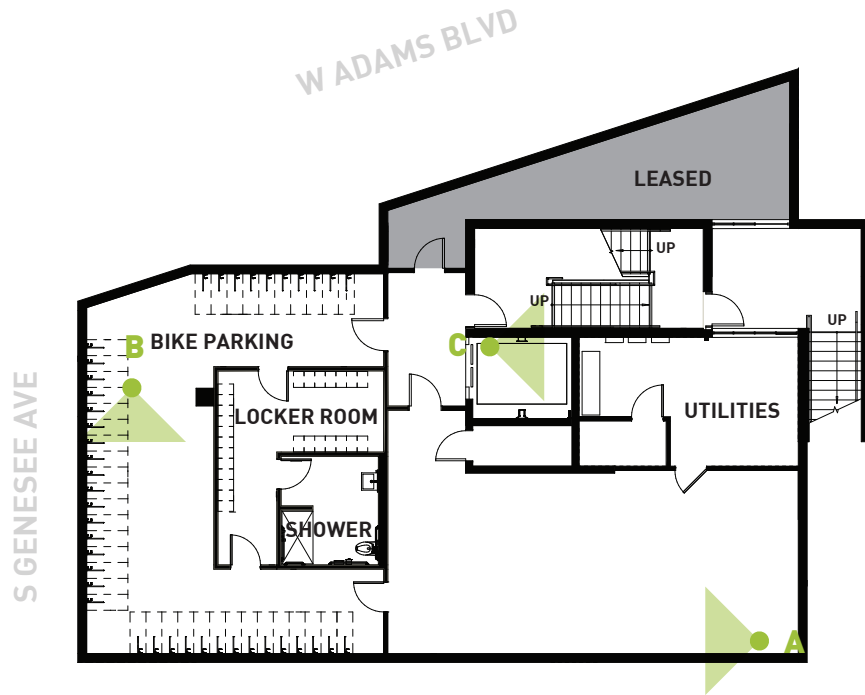
Welcome to mu.so (Coffee & Music Society) – where every sip of coffee is paired with the rhythm of creativity! We’re not just a coffee shop; we’re a cozy corner of West Adams dedicated to bringing people together through music, vibes, and meaningful connections.

OUTDOOR PATIO PHOTOS



JUST OPENED

COMMONN AREA



A— STORAGE/COMMON AREA



B— BIKE RACKS



C— INTERIOR STAIRCASE

FLOOR PLAN | LOWER LEVEL

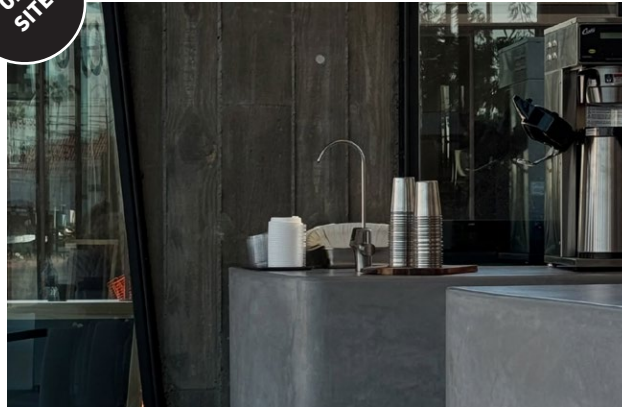
PARKING OPTIONS WITHIN 5 MIN WALK



PARKING OPTIONS

5 WITHIN 10

ON-SITE



mu.so, also known as the Coffee and Music Society, is a specialty coffee shop located at 5788 West Adams Blvd in Los Angeles, CA 90016. (mu.so) They serve specialty-grade coffee, artisanal pastries, and wholesome options in a vibrant, music-inspired space.

10 min WALK



MIAN is a contemporary Chinese noodle house, known for its hand-pulled noodles and flavorful broths. With a focus on authenticity and quality, their menu features a variety of noodle dishes, dumplings, and small plates inspired by the diverse culinary traditions of China. The casual yet stylish setting provides the perfect backdrop for savoring these comforting and satisfying dishes.

10 min WALK



Tartine offers a delightful array of freshly baked goods, artisanal breads, and gourmet sandwiches. With a commitment to using high-quality, locally sourced ingredients, each item on their menu is a testament to craftsmanship and flavor. Whether you're indulging in a flaky croissant, a hearty sandwich, or a decadent dessert, Tartine promises a culinary experience that delights the senses.

10 min WALK



Mizlala offers a contemporary take on Mediterranean cuisine, presenting bold flavors and fresh ingredients in every dish. From vibrant mezze platters to flavorful salads and expertly grilled entrees, their menu caters to a diverse range of palates. The restaurant's casual yet stylish ambiance provides the perfect backdrop for both intimate dinners and lively gatherings with friends. Whether you're craving a leisurely lunch or a memorable evening meal, Mizlala promises a culinary experience that delights the senses.

5 min WALK



Open Face Food Shop offers a fresh take on Scandinavian-inspired cuisine, with a focus on open-faced sandwiches (smørrebrød) and other Nordic delights. Using locally sourced ingredients and traditional recipes, they create beautifully crafted dishes that showcase the flavors of the region. The cozy and welcoming atmosphere makes it a perfect spot for enjoying a leisurely brunch or lunch with friends.

AMENITIES

AT CUMU- LUS

10 MIN WALK



The largest **Whole Foods Market** in SoCal offers a wide selection of organic and natural groceries, fresh produce, and prepared foods. Known for its commitment to quality and sustainability, Whole Foods provides shoppers with a diverse range of options, from artisanal cheeses to responsibly sourced meats and seafood. Additionally, their prepared foods section offers a variety of ready-to-eat meals, salads, and sandwiches made with wholesome ingredients. With a focus on health and environmental consciousness, Whole Foods Market is a go-to destination for conscientious consumers.



Charcoal is a contemporary American restaurant known for its innovative approach to grilling and open-fire cooking. Led by acclaimed chef Josiah Citrin, the menu features a creative selection of dishes highlighting seasonal ingredients cooked over live fire. From wood-grilled meats and seafood to inventive vegetable dishes, each plate offers a bold and distinct flavor profile. The sleek and modern ambiance, combined with impeccable service, creates an inviting atmosphere perfect for a memorable dining experience.



Jinya Ramen Bar is a popular destination for authentic Japanese ramen in Los Angeles. With a focus on rich, flavorful broths and perfectly cooked noodles, their menu offers a variety of ramen options to suit every palate. From traditional tonkotsu to spicy miso and vegan ramen, each bowl is crafted with care and attention to detail. The casual yet lively atmosphere makes it a favorite spot for ramen enthusiasts and casual diners alike.



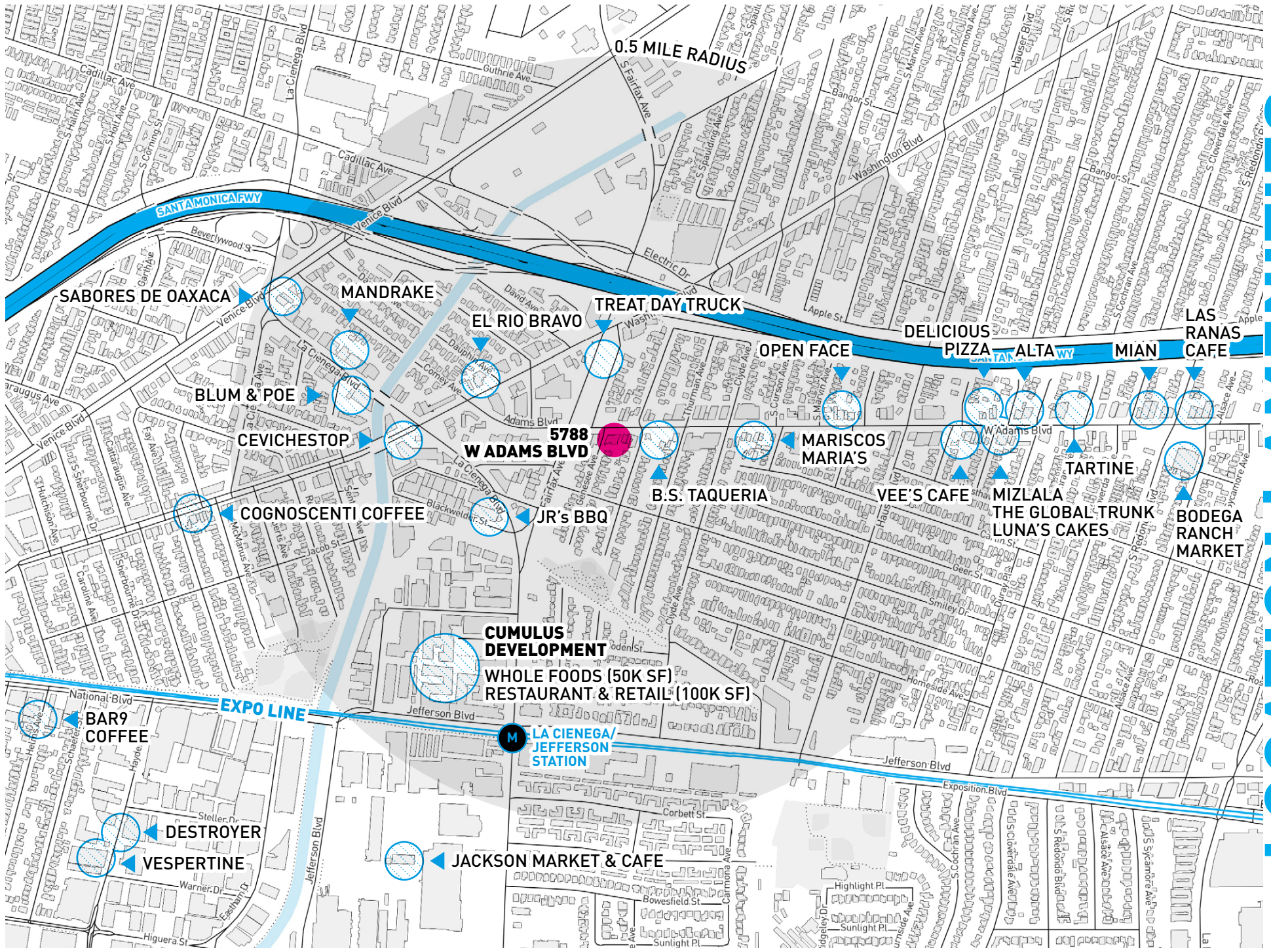
Alchemist Coffee Project is a chic and modern coffee shop known for its expertly crafted specialty coffee drinks. With a focus on quality and precision, their menu features a variety of espresso-based beverages, pour-over coffees, and artisanal teas. The sleek and minimalist decor creates a stylish yet cozy ambiance, perfect for enjoying a morning pick-me-up or catching up with friends over a cup of joe. Whether you're a coffee aficionado or simply appreciate a good brew, Alchemist Coffee Project promises a delightful caffeinated experience.



Sandbox VR offers an immersive virtual reality gaming experience, allowing players to step into interactive worlds and embark on thrilling adventures. With state-of-the-art VR technology and multiplayer capabilities, Sandbox VR provides an exhilarating gaming experience for friends, families, and corporate groups alike. From epic battles to puzzle-solving challenges, each game is designed to transport players to new and exciting realms. The spacious and modern facilities ensure a comfortable and unforgettable VR experience for all participants.

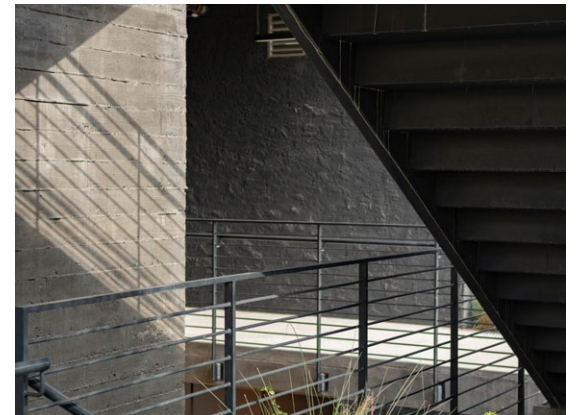
AMENITIES

LOS ANGELES



LOCATION | AMENITIES

Redcar Properties - the developer of 5788 W Adams Blvd. - prides itself on best-in-class architecture and design, natural materials such as wood, steel, and concrete, quality fixtures, and timeless finishes. For Redcar, the office experience sets the tone for the company's culture and ultimately the work product.



REDCAR PROPERTIES

ABOUT