

THREE OFFICE/WAREHOUSE BUILDINGS FOR SALE

205 OLD PERRY ROAD, BONAIRE, GA 31005
HOUSTON COUNTY

MAIN BUILDING: ± 8,500 SF
SECOND BUILDING: ± 1,150 SF
THIRD BUILDING: ± 750 SF

SALE PRICE:
\$1,000,000

CALL AGENT FOR LEASE RATE

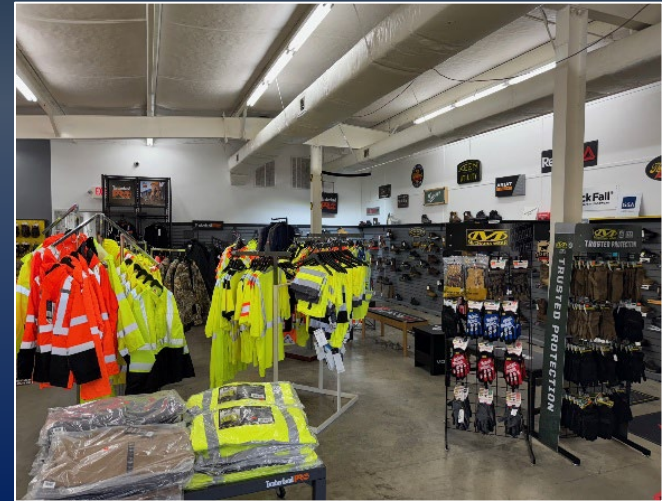
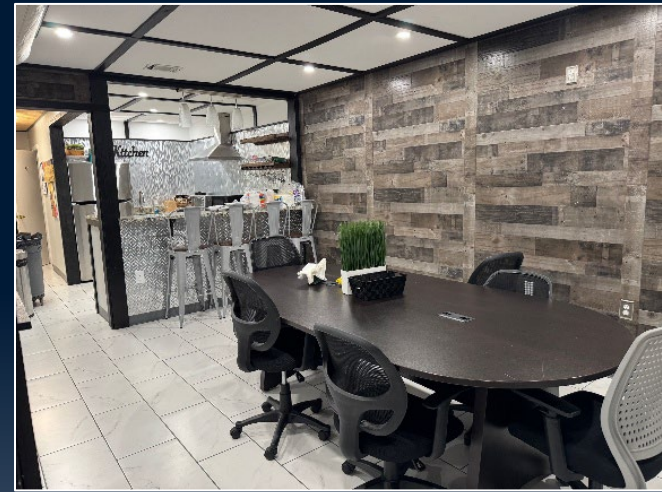


KEVIN HARKINS C: 478.338.0623
KHARKINS@THESUMMITGROUPMACON.COM
4124 ARKWRIGHT ROAD, SUITE 1, MACON, GA 31210
O: 478.750.7507
WWW.THESUMMITGROUPMACON.COM



PROPERTY INFORMATION

- Main Building ± 8,500 SF:
 - Office/Showroom & Warehouse
 - Loading Ramp & Drive in Door
- Second Building ± 1,150 SF:
 - Retail Building
- Third Building ± 750 SF:
 - Storage with Car Port Covered Area
- 2.2 Acres with Level Topography
- Septic System
- Zoned: C-2



205 OLD PERRY ROAD
BONAIRE, GA 31005
HOUSTON COUNTY



AERIAL

- Approximately 235 feet of frontage on Old Perry Road
- Located at the intersection of Old Perry Road & Old Highway 96 just down from Highway 96
- Demographics

5 Miles

2024 Population: 76,714

2029 Population Estimate: 81,067

2024 Households: 28,543

2029 Households Estimate: 30,403

2024 Average HH Income: \$110,313

2029 Average HH Income Estimate: \$128,325



**205 OLD PERRY ROAD
BONAIRE, GA 31005
HOUSTON COUNTY**



ADDITIONAL PHOTOS



The information contained herein has been compiled from various sources, both private and public. It is accurate and complete only to the extent to which The Summit Group has been able to ascertain from third party sources. As such, no warranty or guarantee is given or implied with regard to the accuracy or completeness of any information contained herein. Any interested party shall be required to conduct its own due diligence and investigations to verify, review, audit, or otherwise insure the information contained herein.

