

4 2 4 1 1

R. MANCINI DR.

STERLING HEIGHTS, MICHIGAN

TAX ABATEMENT POSSIBLE

INDUSTRIAL NEW CONSTRUCTION
AVAILABLE FOR LEASE



LOT 2
37,173 SF
2.14 ACRES

NEWMARK

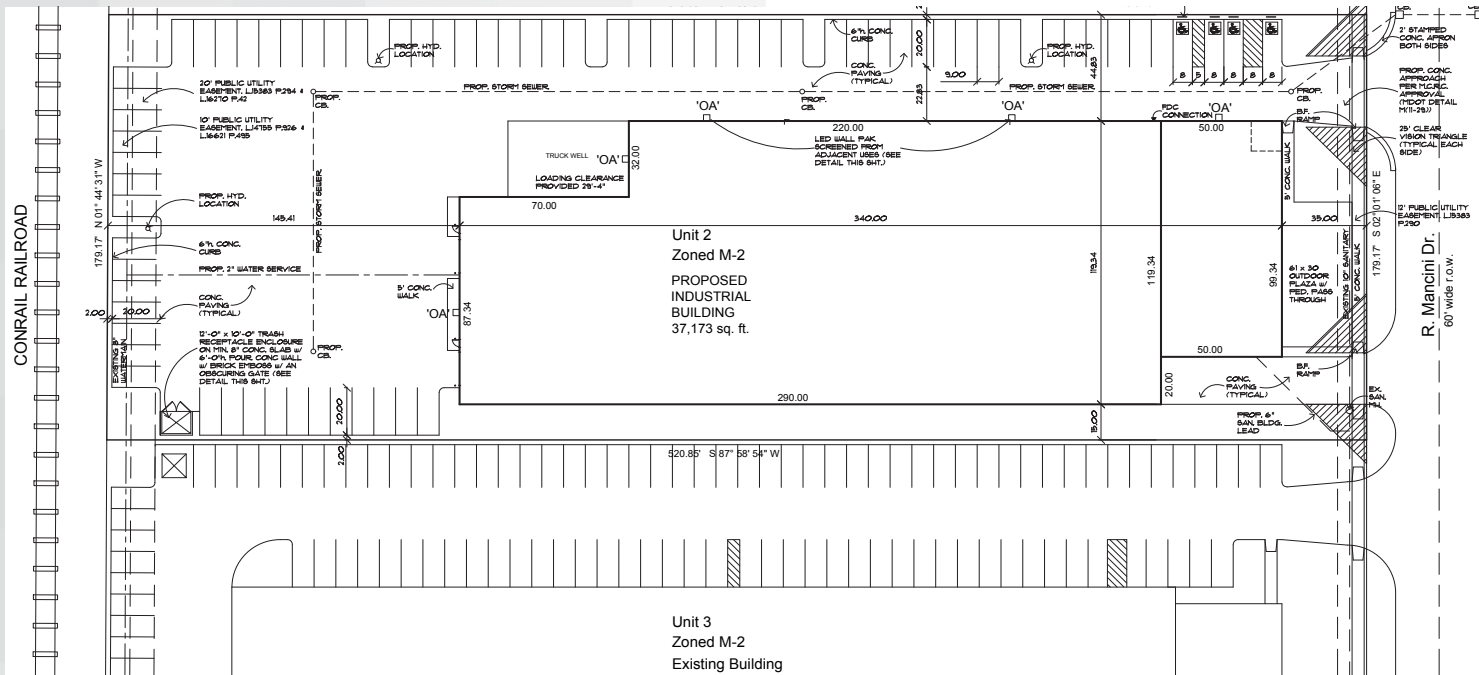
Chris Dowell
Senior Managing Director
chris.dowell@nmrk.com
248-447-2717

Jack Coury
Senior Managing Director
jack.coury@nmrk.com
248-372-2276

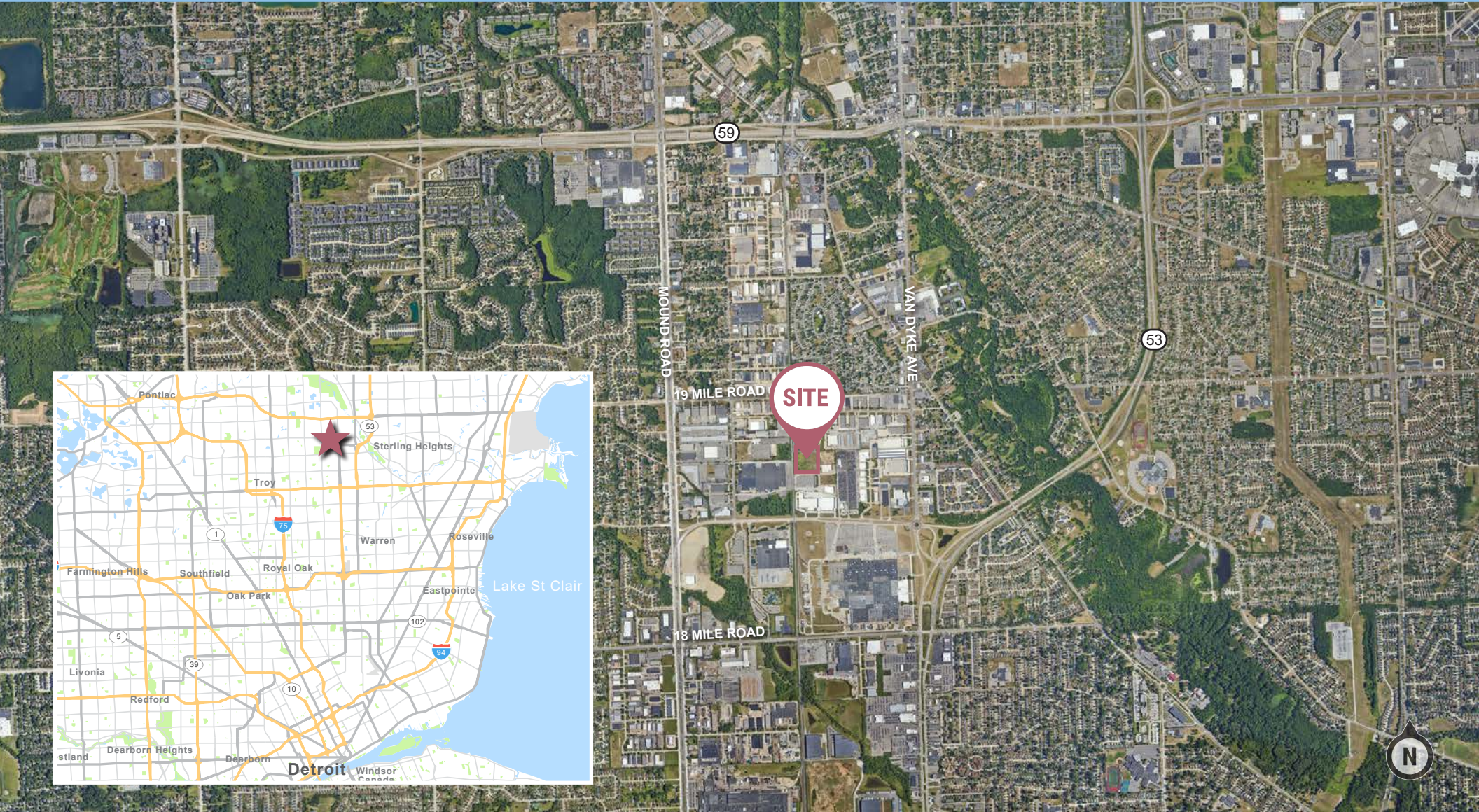
Property Details

- \$10.95/SF NNN
- Available Spring 2026
- New Construction
- 37,173 SF
- 4,967 SF Office
- 2.14 Acres
- Air Rotation or Radiant Heat
- (2) Exterior Truckwells
- (2) 14' x 14' Grade Level Doors
- Zoned M-2 (Heavy Industrial)
- 24' Clear Height
- Power 1,600A/480V
- 100% Sprinklered
- LED Lighting
- Cranes and Floor Drains Possible
- Tax Abatement Possible

Lot 2 Site Plan



Location Details



Chris Dowell
Senior Managing Director
chris.dowell@nrmk.com
248-447-2717

Jack Coury
Senior Managing Director
jack.coury@nrmk.com
248-372-2276

26555 Evergreen Rd, Suite 500 Southfield, MI 48076
nrmk.com

The information contained herein has been obtained from sources deemed reliable but has not been verified and no guarantee, warranty or representation, either express or implied, is made with respect to such information. Terms of sale or lease and availability are subject to change or withdrawal without notice.