



PROPERTY
RESERVE



Jordan Johnson

801.321.8711

Jordan.Johnson@propertyreserve.org



Address

115-161 Salt Lake City, Utah 84111

Regent Street Overview

An integral part of the 111 Main/Eccles Theater/Regent Street revitalization, On Regent establishes a dynamic destination location in Salt Lake City's premier office, theater, entertainment and retail district. A major pedestrian connector between City Creek and Gallivan Center, On Regent's restaurants, and street cafes serve Eccles Theater patrons, 95 State and 111 Main tenants, other downtown office workers, city visitors, and the special event and convention sectors.



Parking

Covered parking for tenants is available within the block at prevailing market rates. Guests are encouraged to park in the City Creek Center Garage with the first 2 hours free.

Public Transit

Within easy walking distance to bus stations, TRAX stations, and Frontrunner stations



Lease Rate

NNN

Improvements

Generous TI packages available

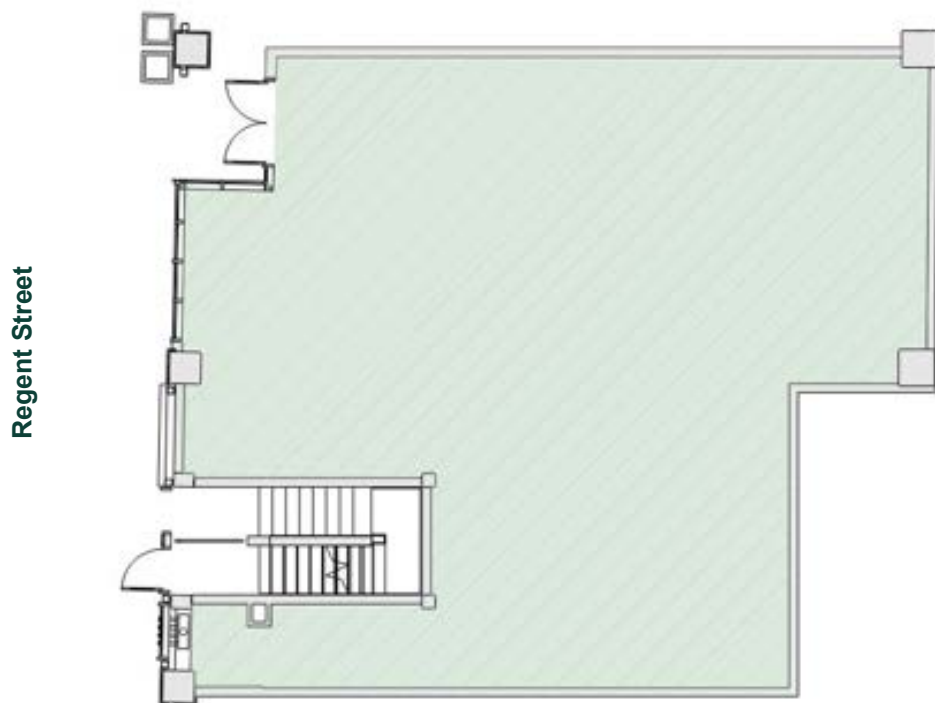
Suite 141

Rentable Square Feet: 2,465

Lease Rates: \$32.00-\$34.00/RSF

Status: Available

Condition: Gray shell ready for immediate build out



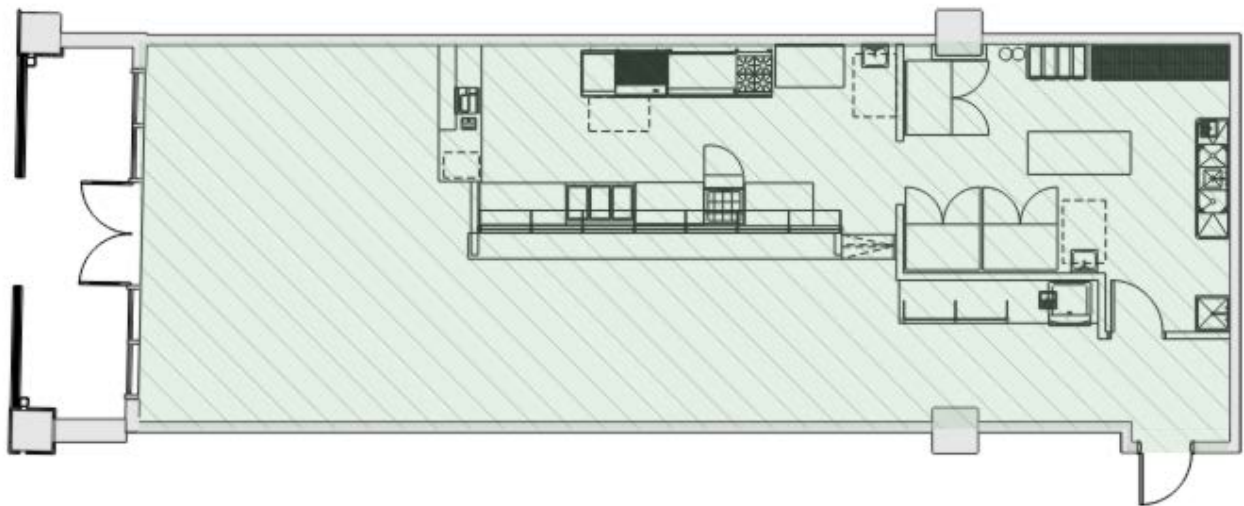
Suite 151

Rentable Square Feet: 1,694

Lease Rates: \$32.00-\$34.00/RSF

Status: Available

Condition: Previous tenant design intact



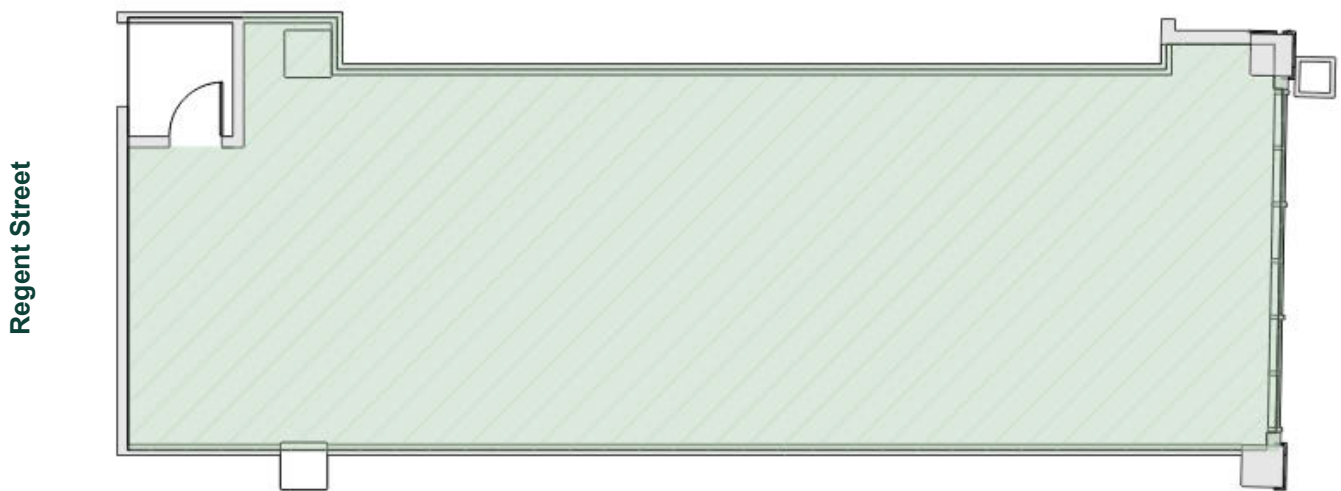
Suite 155

Rentable Square Feet: 1,568

Lease Rates: \$32.00-\$34.00/RSF

Status: Available

Condition: Gray shell ready for immediate build out



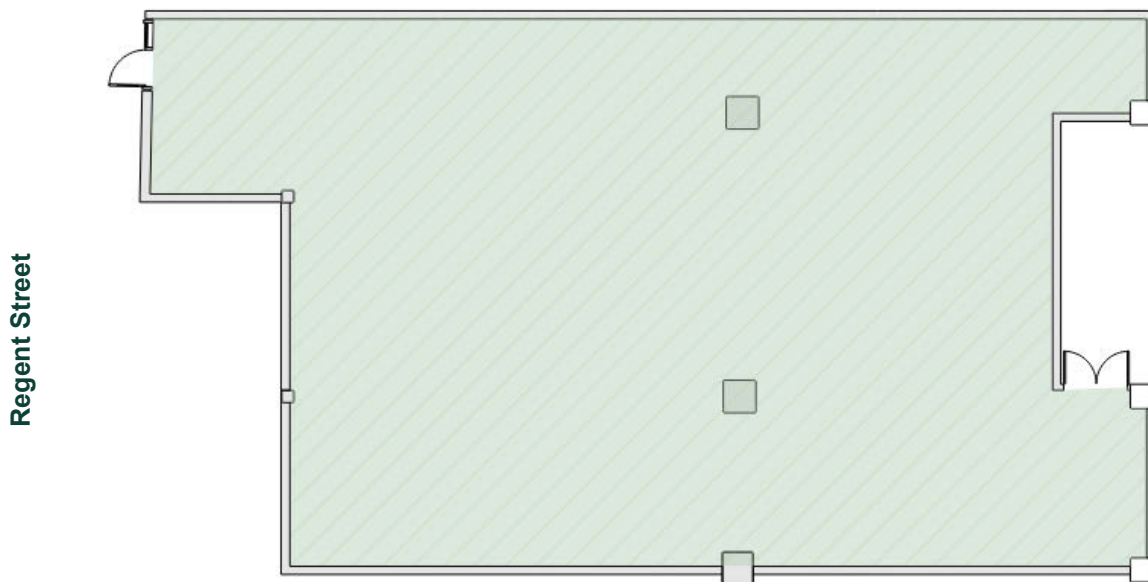
Suite 161

Rentable Square Feet: 3,694

Lease Rates: \$20.00-\$25.00/RSF

Status: Available

Condition: Gray shell ready for immediate build out



Suite 200 - Office Space

Rentable Square Feet: 9,996

Lease Rates: \$28.00-\$30.00/RSF

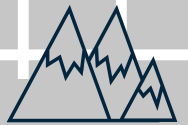
Status: Available

Condition: Prior design intact and ready for occupancy



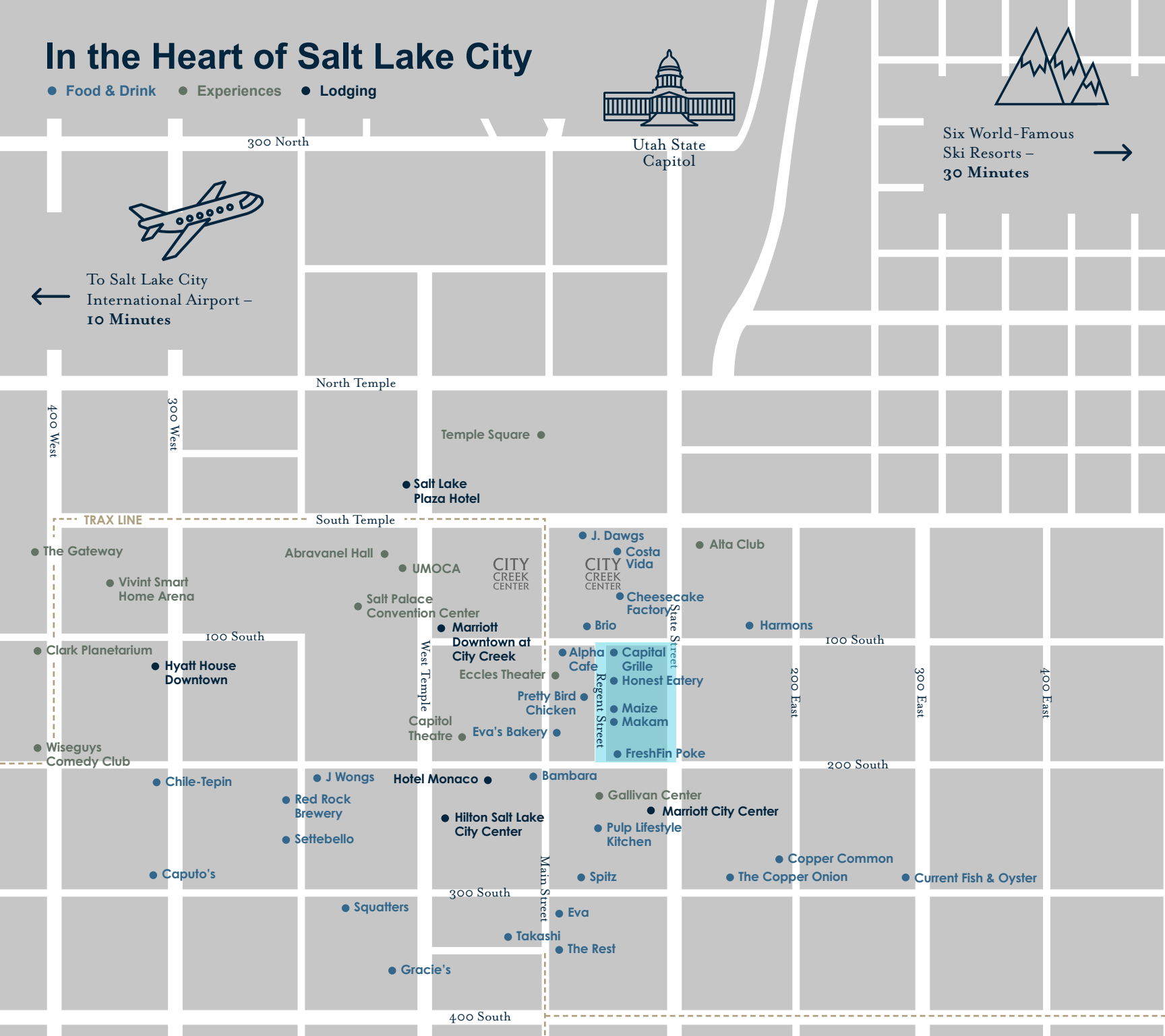
In the Heart of Salt Lake City

● Food & Drink ● Experiences ● Lodging



Six World-Famous
Ski Resorts –
30 Minutes →

← To Salt Lake City
International Airport –
10 Minutes



Contact

Jordan Johnson 801.321.8711

Jordan.Johnson@propertyreserve.org



PROPERTY
RESERVE