

RETAIL/SHOWROOM/ OFFICE SPACE FOR LEASE

1015 W. GRAND AVE
CHICAGO, IL

JAMESON.

STEVEN GOLDSTEIN
SENIOR VICE PRESIDENT
312.840.9002
STEVE@CHICAGOBROKER.COM

MARIA MCKINSEY
BROKER ASSOCIATE
773.799.0007
MARIA@CHICAGOBROKER.COM



EXECUTIVE SUMMARY



PROPERTY ADDRESS

1015 W. GRAND AVENUE

SQUARE FOOTAGE

FIRST FLOOR FULL SPACE- 5,057 SF
SUBDIVIDED SUITE A- 1,724 RSF + 1,661
RSF GARAGE = 3,385 RSF
SUBDIVIDED SUITE B- 1,672 RSF
SECOND FLOOR SUITE- 2,100 SF

PARKING

GARAGE SPACE + STREET PARKING

SUBMARKET

FULTON MARKET

FOR LEASE

\$30.00/SF NNN (FIRST FL)
\$20.00/SF NNN (SECOND FL)
\$8.36/SF TAXES + \$1.50/SF CAM

PROPERTY DESCRIPTION

Introducing an exceptional leasing opportunity at 1015 W Grand Ave., in Chicago. This versatile open flex space is thoughtfully designed to accommodate a variety of uses, from collaborative work environments to adaptable event spaces. The property features a modern, open layout that can be easily tailored to suit the unique needs of your business or event. With ample natural light, flexible floor plans, and state-of-the-art amenities, this space offers endless possibilities for creativity and innovation. 1015 W. Grand offers the unique opportunity for various business types to occupy an open plan first floor space with attached garage and office area. The rental rate range is dependent on lease term, concession package, and use.

Please contact listing brokers for more information.

AREA & TRANSPORTATION HIGHLIGHTS:

EASY ACCESS TO TO PUBLIC TRANSPORTATION WITH THE FOLLOWING TRANSIT STOPS NEARBY:

GRAND AVENUE STATION (BLUE LINE) - 5 MIN WALK

MORGAN STATION (GREEN LINE) - 7 MIN WALK

CHICAGO AVENUE STATION (BLUE LINE) - 11 MIN WALK

CLINTON STATION (BLUE LINE) - 16 MIN WALK

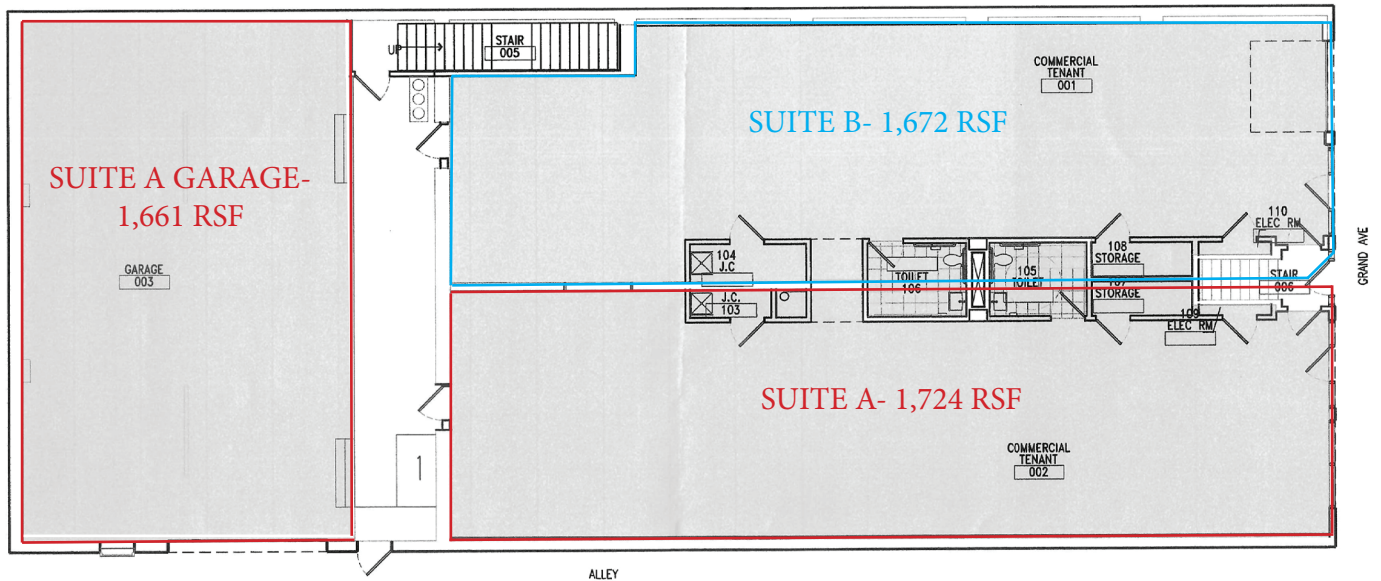
JAMESON.

STEVEN GOLDSTEIN
SENIOR VICE PRESIDENT
312.840.9002
STEVE@CHICAGOBROKER.COM

JAMESON.

MARIA MCKINSEY
BROKER ASSOCIATE
773.799.0007
MARIA@CHICAGOBROKER.COM

GROUND FLOOR PLAN
1015 W. GRAND AVENUE
CHICAGO

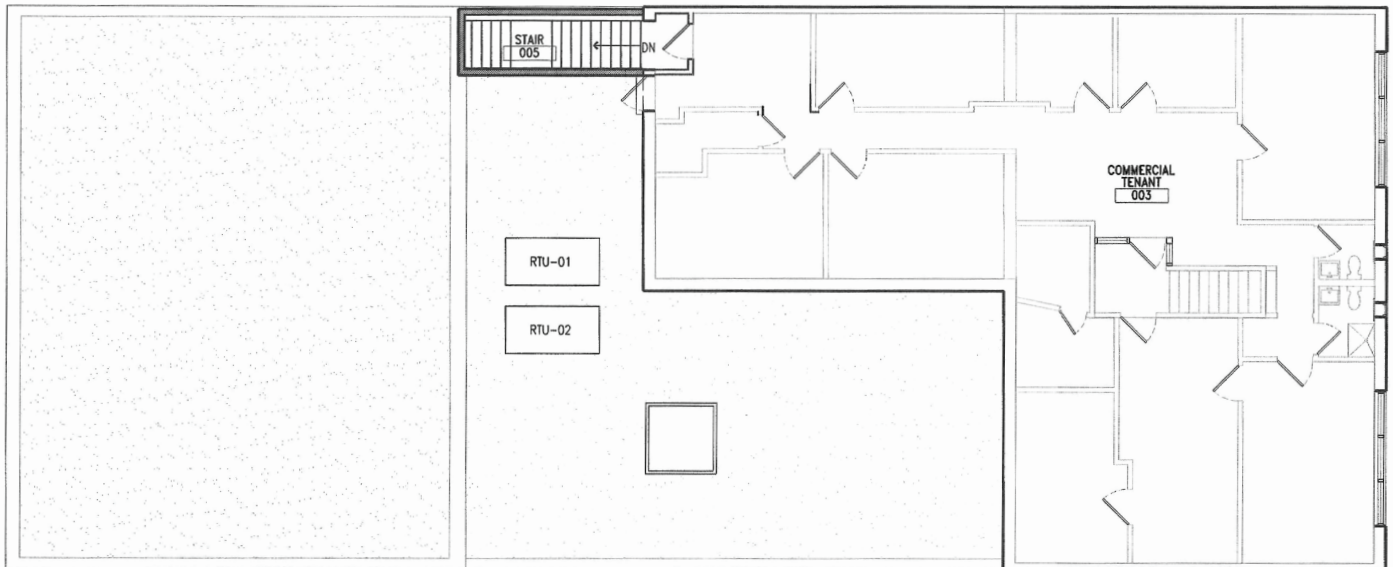


SUITE A: 1,724 RSF + 1,661 RSF Garage = 3,385 RSF

JAMESON.
STEVEN GOLDSTEIN
SENIOR VICE PRESIDENT
312.840.9002
STEVE@CHICAGOBROKER.COM

JAMESON.
MARIA MCKINSEY
BROKER ASSOCIATE
773.799.0007
MARIA@CHICAGOBROKER.COM

SECOND FLOOR PLAN
1015 W. GRAND AVENUE
CHICAGO



ALLEY

2,100 RSF

JAMESON.

STEVEN GOLDSTEIN
SENIOR VICE PRESIDENT
312.840.9002
STEVE@CHICAGOBROKER.COM

JAMESON.

MARIA MCKINSEY
BROKER ASSOCIATE
773.799.0007
MARIA@CHICAGOBROKER.COM

OFFICE SPACE - INTERIOR PHOTOS

1015 W. GRAND AVENUE

CHICAGO



JAMESON.

STEVEN GOLDSTEIN
SENIOR VICE PRESIDENT
312.840.9002
STEVE@CHICAGOBROKER.COM

JAMESON.

MARIA MCKINSEY
BROKER ASSOCIATE
773.799.0007
MARIA@CHICAGOBROKER.COM

OFFICE SPACE - INTERIOR PHOTOS

1015 W. GRAND AVENUE

CHICAGO



JAMESON.

STEVEN GOLDSTEIN
SENIOR VICE PRESIDENT
312.840.9002
STEVE@CHICAGOBROKER.COM

JAMESON.

MARIA MCKINSEY
BROKER ASSOCIATE
773.799.0007
MARIA@CHICAGOBROKER.COM

DEMOGRAPHIC INSIGHTS

1015 W. GRAND AVENUE

CHICAGO

DEMOGRAPHIC SUMMARY

1015 W Grand Ave, Chicago, Illinois, 60642

Ring of 1 mile

KEY FACTS

68,780

Population



41,055

Households

33.3

Median Age

\$112,560

Median Disposable Income

EDUCATION

2%

No High School Diploma



3%

High School Graduate



8%

Some College



87%

Bachelor's/Grad/Prof Degree

INCOME



\$153,356

Median Household Income



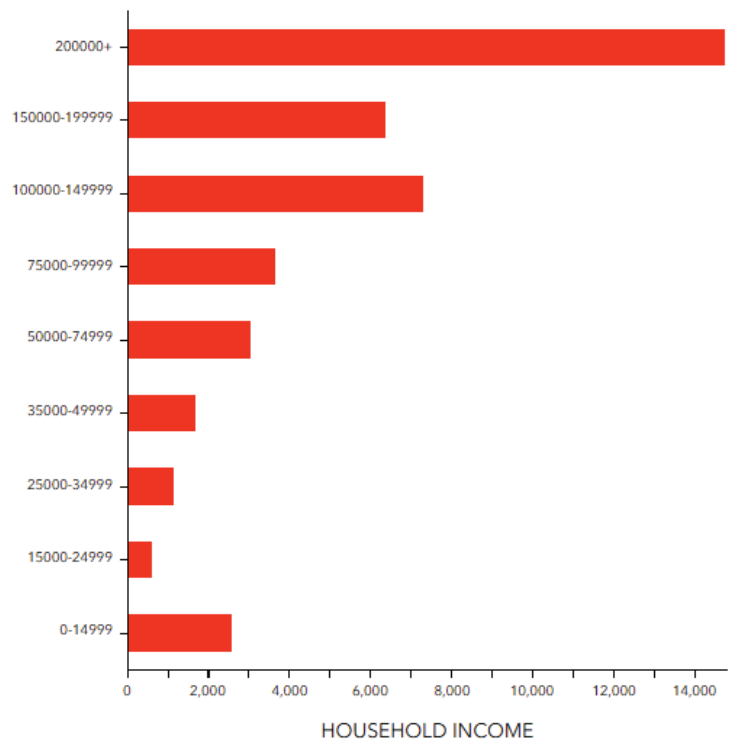
\$118,015

Per Capita Income



\$190,251

Median Net Worth



JAMESON.

STEVEN GOLDSTEIN
SENIOR VICE PRESIDENT
312.840.9002
STEVE@CHICAGOBROKER.COM

JAMESON.

MARIA MCKINSEY
BROKER ASSOCIATE
773.799.0007
MARIA@CHICAGOBROKER.COM



JAMESON.

STEVEN GOLDSTEIN

SENIOR VICE PRESIDENT

312.840.9002

STEVE@CHICAGOBROKER.COM

MARIA MCKINSEY

BROKER ASSOCIATE

773.799.0007

MARIA@CHICAGOBROKER.COM