

# RENOVATED RETAIL SPACE/SHOWROOM WITH WAREHOUSE/WORKSHOP FOR SALE

7473 Warden Rd. | Sherwood, AR 72120



**DARYL PEEPLES**

PRESIDENT | PARTNER | PRINCIPAL BROKER

📞 501.375.3200 | 📠 501.244.7504

[dpeeples@kelleycp.com](mailto:dpeeples@kelleycp.com)



**KELLEY COMMERCIAL  
PARTNERS**

# RENOVATED RETAIL SPACE/SHOWROOM WITH WAREHOUSE/WORKSHOP FOR SALE

7473 Warden Rd. | Sherwood, AR 72120

## AVAILABLE

±6,000 Retail Space/Showroom  
 ±3,000 Warehouse/Workshop  
**±9,000 SF TOTAL**

## PRICE

\$1,200,000

## COMMENTS

- Versatile commercial property featuring a ±6,000 SF retail/showroom area with an adjoining ±3,000 SF warehouse/workshop
- Well-suited for a wide range of users, including retail, showroom, service, light industrial, contractor, distribution, or specialty business uses
- Fully renovated in 2021, including new HVAC, LED lighting retrofit, interior/exterior paint, and many other building improvements
- Entire building is heated and cooled, providing comfort for both customer-facing and operational areas
- 5 (five) overhead doors offering strong functionality for deliveries, storage, equipment access, or workflow efficiency
- Convenient Sherwood location with quick access and excellent visibility along Warden Road and the newly expanded I-57 (US 67/167) corridor
- Zoned C-4

## TRAFFIC COUNTS

Brookwood Rd: 23,925 VPD  
 I-57 (US 67/167): 75,025 VPD



## DARYL PEEPLES

PRESIDENT | PARTNER | PRINCIPAL BROKER  
 ☎ 501.375.3200 | 📠 501.244.7504  
 dpeeples@kelleycp.com



# RENOVATED RETAIL SPACE/SHOWROOM WITH WAREHOUSE/WORKSHOP FOR SALE

7473 Warden Rd. | Sherwood, AR 72120



**DARYL PEEPLES**  
PRESIDENT | PARTNER | PRINCIPAL BROKER  
☎ 501.375.3200 | 📞 501.244.7504  
dpeeples@kelleycp.com



# RENOVATED RETAIL SPACE/SHOWROOM WITH WAREHOUSE/WORKSHOP FOR SALE

7473 Warden Rd. | Sherwood, AR 72120



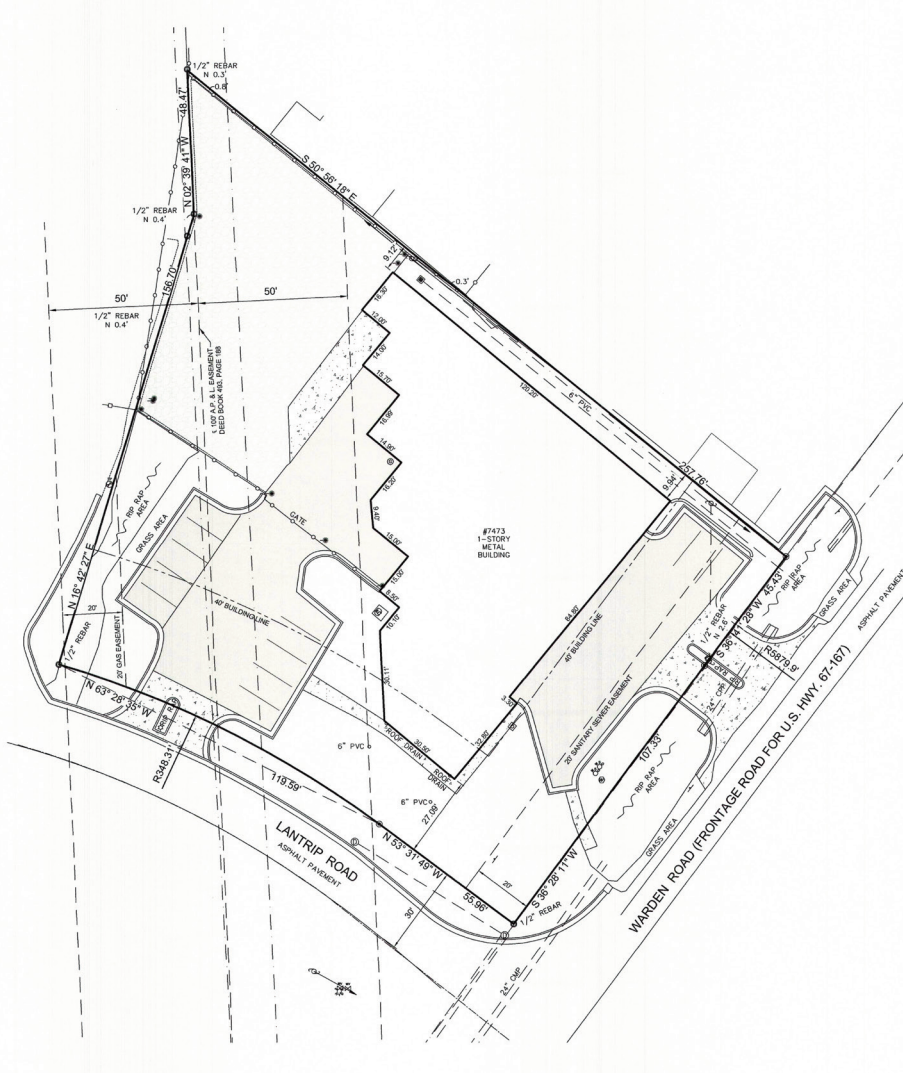
**DARYL PEEPLES**  
PRESIDENT | PARTNER | PRINCIPAL BROKER  
☎ 501.375.3200 | 📠 501.244.7504  
dpeeples@kelleycp.com



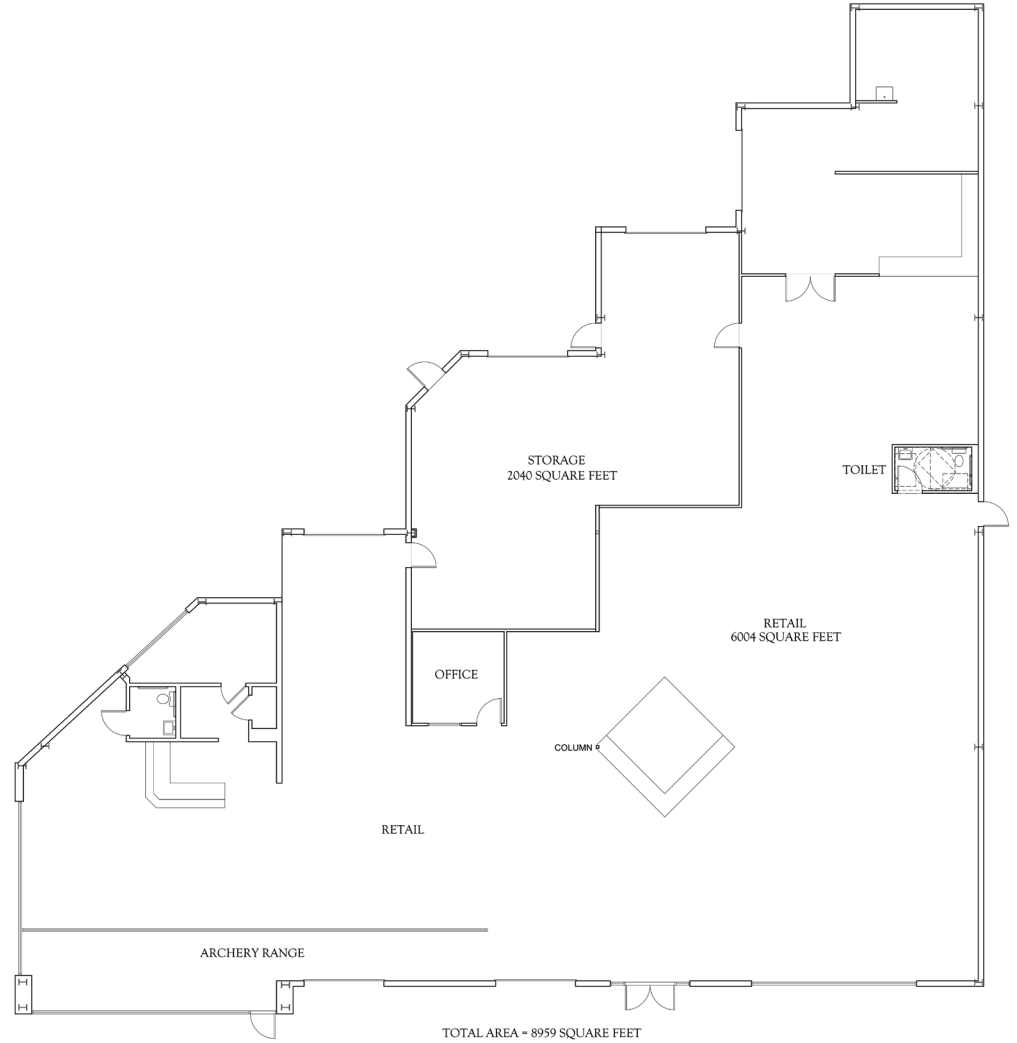
# RENOVATED RETAIL SPACE/SHOWROOM WITH WAREHOUSE/WORKSHOP FOR SALE

7473 Warden Rd. | Sherwood, AR 72120

## SURVEY



## FLOOR PLAN



**DARYL PEEPLES**  
PRESIDENT | PARTNER | PRINCIPAL BROKER  
☎ 501.375.3200 | 📠 501.244.7504  
dpeeples@kelleycp.com



## ABOUT KELLEY COMMERCIAL PARTNERS

Kelley Commercial Partners is a full-service commercial real estate firm providing the highest caliber of services to owners, investors, landlords, and tenants. We service clients with the focused attention that only a privately-owned local firm can offer. At Kelley Commercial Partners, we take pride in maintaining long-term relationships built on trust, resourcefulness, and reliability.



**DARYL PEEPLES**  
PRESIDENT | PARTNER | PRINCIPAL BROKER

BROKERAGE

PROPERTY MANAGEMENT

DEVELOPMENT MANAGEMENT

CONSULTING

---

425 W. Capitol Avenue, Suite 300  
Little Rock, AR 72201  
501.375.3200

4100 Corporate Center Drive, Suite 101  
Springdale, AR 72762  
479.443.8002



Kelley Commercial Partners is the agent for the owner of the property described herein. All information contained herein is secured from sources we believe to be reliable. However, no information is guaranteed in any way. Any reproduction of this material, in whole or in part is prohibited without prior written consent of Kelley Commercial Partners.

[kelleycp.com](http://kelleycp.com) | [in](#) [f](#) [@](#)

**CHAINLINKS**  
RETAIL ADVISORS