



RÊVE Boulder

3000 Pearl Street, Boulder, CO

Outstanding Restaurant or Retail Space For Lease at 30th & Pearl

Angela Topel

angela@gibbonswhite.com
(303) 586-5921

Michael-Ryan McCarty

mccarty@gibbonswhite.com
(303) 586-5939

Patrick Weeks

patrick@gibbonswhite.com
(303) 586-5935

www.gibbonswhite.com

[Property Info & Gallery](#)

[View Map](#)

| | |
|----------------------|---------------|
| Available Space | 2,456 sq. ft. |
| Lease Rate / sq. ft. | \$34.00 NNN |
| Expenses / sq. ft. | \$15.00* |

**Not Including Utilities*

- Brand New Prestigious Retail, Restaurant, or Services Space Available Now with Spectacular Visibility & Significant Improvement Allowance Available
- RÊVE is a Mixed-Use Project in the Heart of Boulder Junction Featuring 242 Luxury Apartments & 118,000 sq. ft. Google Office
- Featuring Well-Manicured Pedestrian Plazas & Public Spaces to Encourage Community Gathering
- Adjacent to Google, RTD Park & Ride, Hyatt Place Hotel, Whole Foods, 29th Street Mall & Boulder Bike Trail System
- Unbeatable Signage & Exposure along Pearl & 30th
- On-Site Shared Parking with 549 Spaces

© 2026 Gibbons-White, Inc.



2305 Canyon Blvd, Suite 200, Boulder, CO 80302 • (303) 442-1040

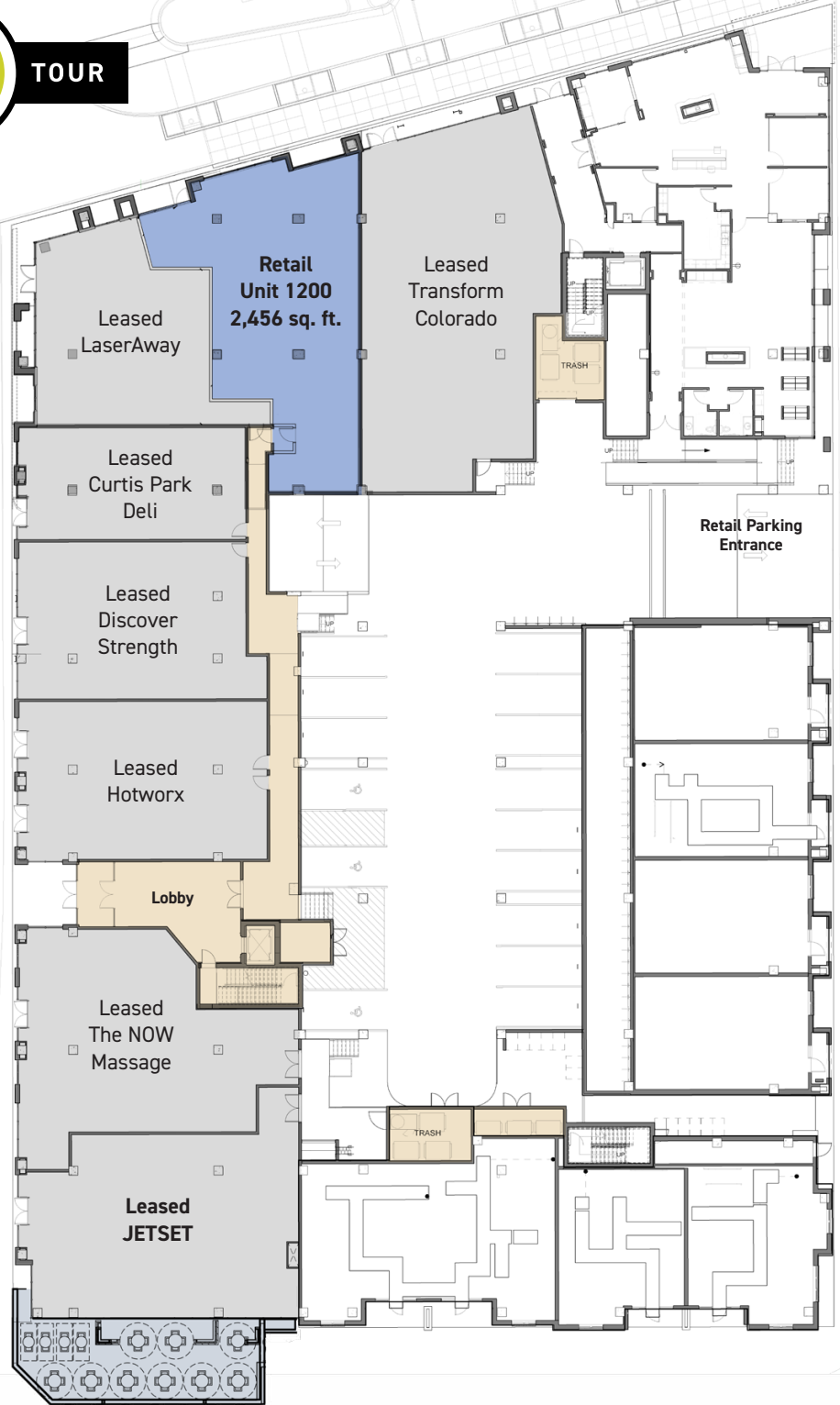
The information included has been obtained from sources believed reliable. While we do not doubt the accuracy, it is unverified and no representation is being made.

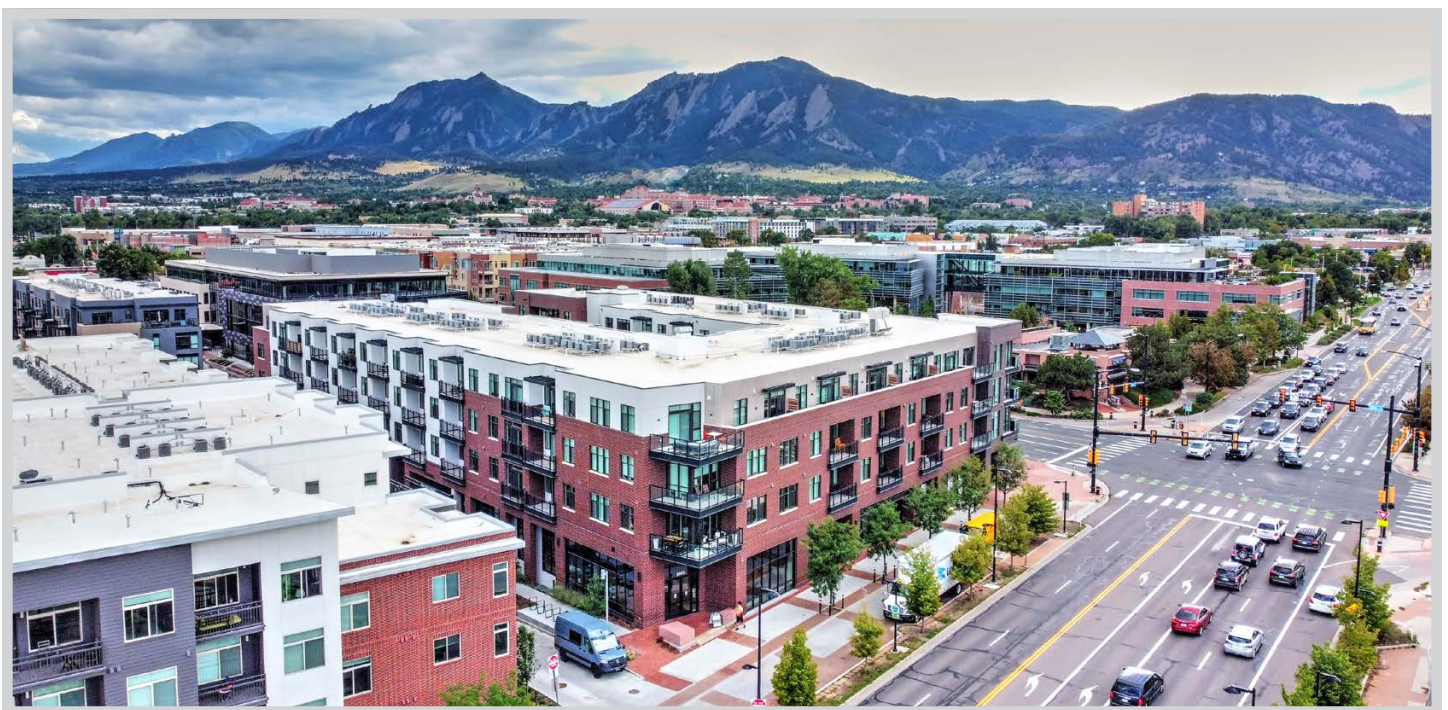
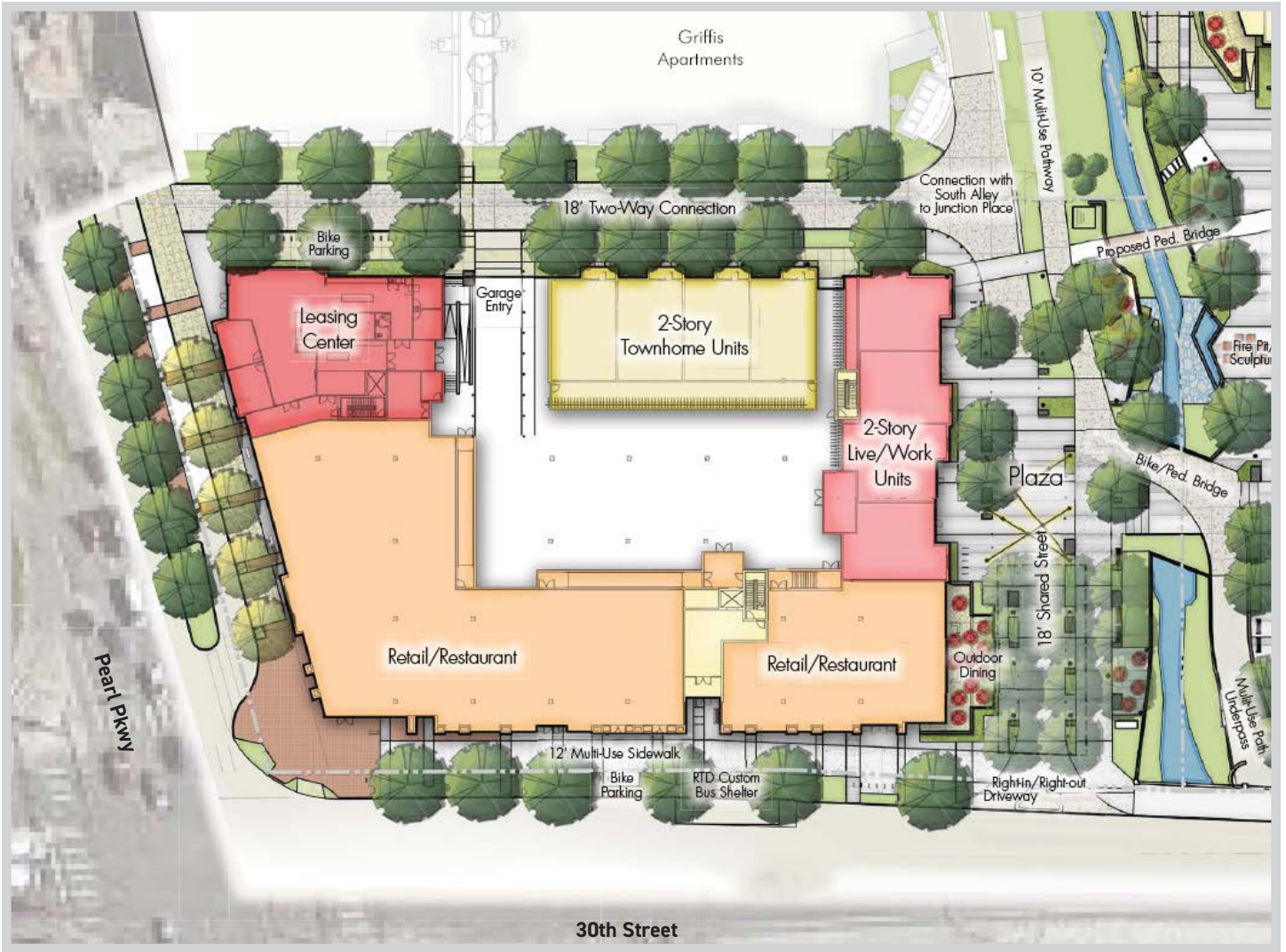
Ground Level Plan

PEARL STREET



30TH STREET

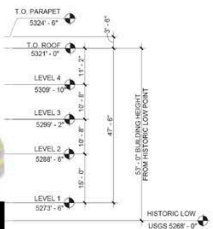




© 2026 Gibbons-White, Inc.



ELEVATION PLAN



2 BUILDING 1 - WEST - 30TH ST.
1" = 5/16"