

THE COMMONS IV *in OXFORD COMMONS*



**COMPLETION
JUNE 1, 2026**

Located at the corner of
Sisk Ave & Commonwealth Blvd
Oxford, Mississippi



OPENING 2026

**COMMERCIAL RETAIL | OFFICE SPACE
NOW LEASING**

GILL
PROPERTIES

6815 Poplar Ave., Suite 110
Germantown, TN 38138
www.GillProp.com | 901.785.1100



FRANK DYER III, CCIM, RPA
Senior Vice President of Brokerage
(C) 901.277.8183
frank@gillprop.com



BARRY MAYNARD
Senior Vice President of Brokerage
(C) 901.230.4265
barry@gillprop.com

THE COMMONS | PHASE IV

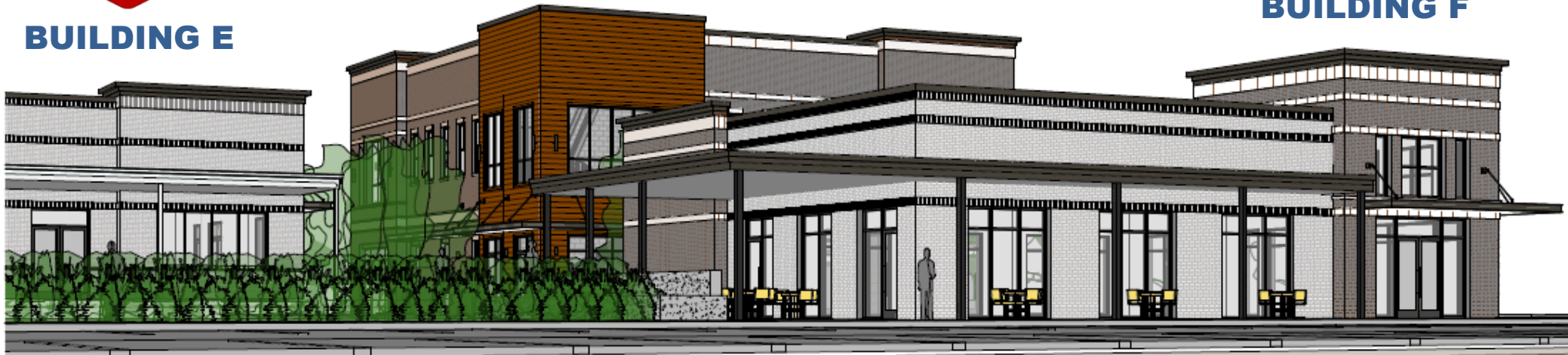
Sisk Avenue & Commonwealth Blvd

3D
VIEW

BUILDING E

BUILDING D

BUILDING F



Completion is June 1, 2026

BUILDING D

- **Ground Floor 100% LEASED**
- **Second Floor | Office Space | 4,590 SF**

BUILDING F

- **3,574 SF | One Level**
- **Can be Sub-divided**

BUILDING E
LEASED



THE COMMONS | PHASE IV

Sisk Avenue & Commonwealth Blvd

3D
VIEW

AVAILABLE

BUILDING D

- Ground Floor | **100% LEASED**
- Second Floor | Office Space | 4,590 SF



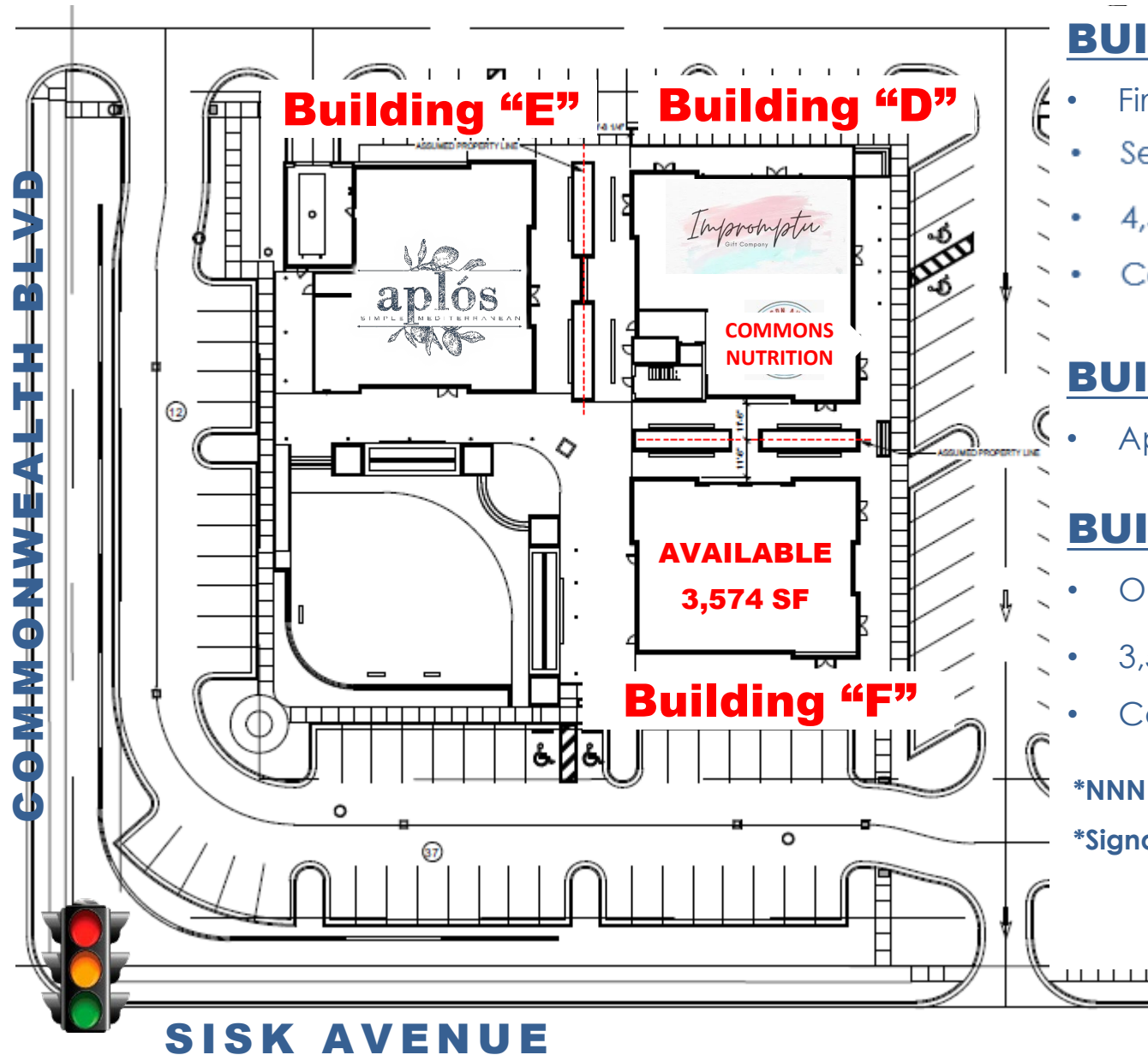
AVAILABLE

BUILDING F

- 3,574 SF | One Level
- Can be Sub-divided



THE COMMONS | PHASE IV SITE LAYOUT



BUILDING D

- First Floor Retail – **100% LEASED**
- Second Floor Office Space **AVAILABLE**
- 4,590 SF | \$35 PSF
- Can be Sub-Divided

BUILDING E

- Apolos Mediterranean Restaurant

BUILDING F

- One Level
- 3,574 Square Feet | **AVAILABLE**
- Can be Sub-Divided

*NNN estimated to be \$7.75 PSF

*Signage TBD

FOR MORE INFORMATION:

FRANK DYER III, CCIM, RPA
frank@gillprop.com

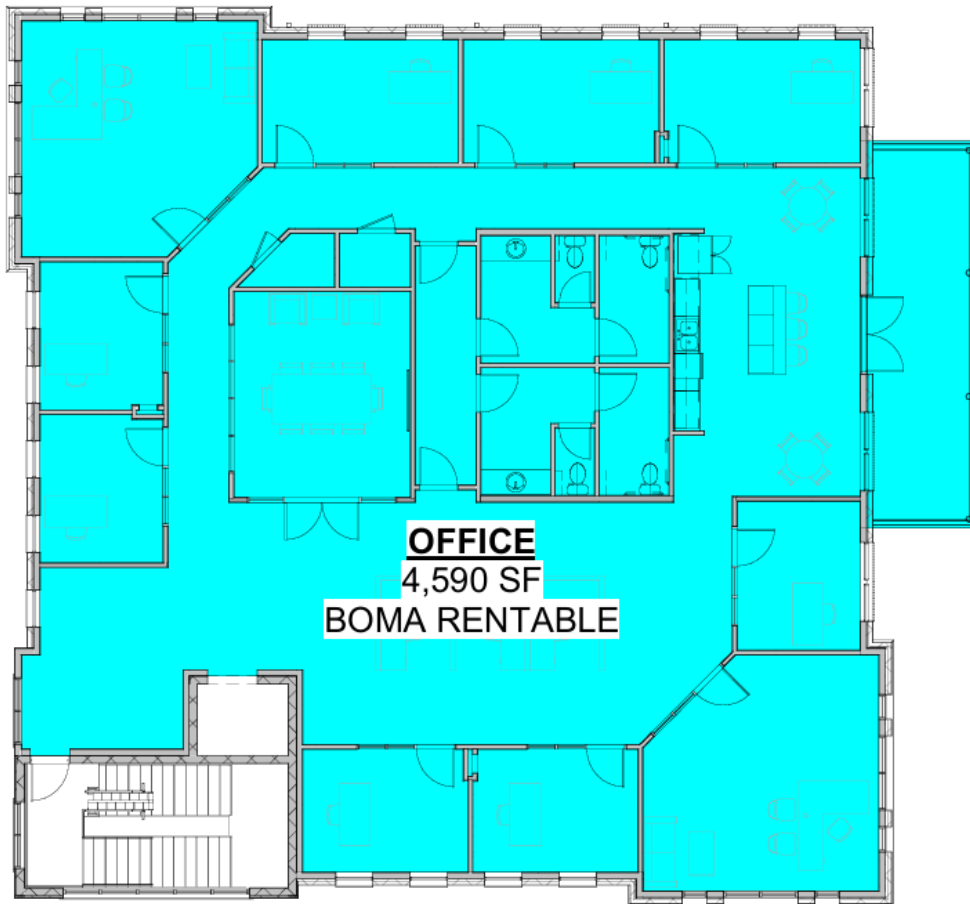
BARRY MAYNARD
barry@gillprop.com

THE COMMONS | PHASE IV

BUILDING D | SECOND FLOOR PLANS

2ND FLOOR | 4,590 SF | OFFICE SPACE
\$35 PSF + NNN

Three Optional Floor Plan Designs



AVAILABLE

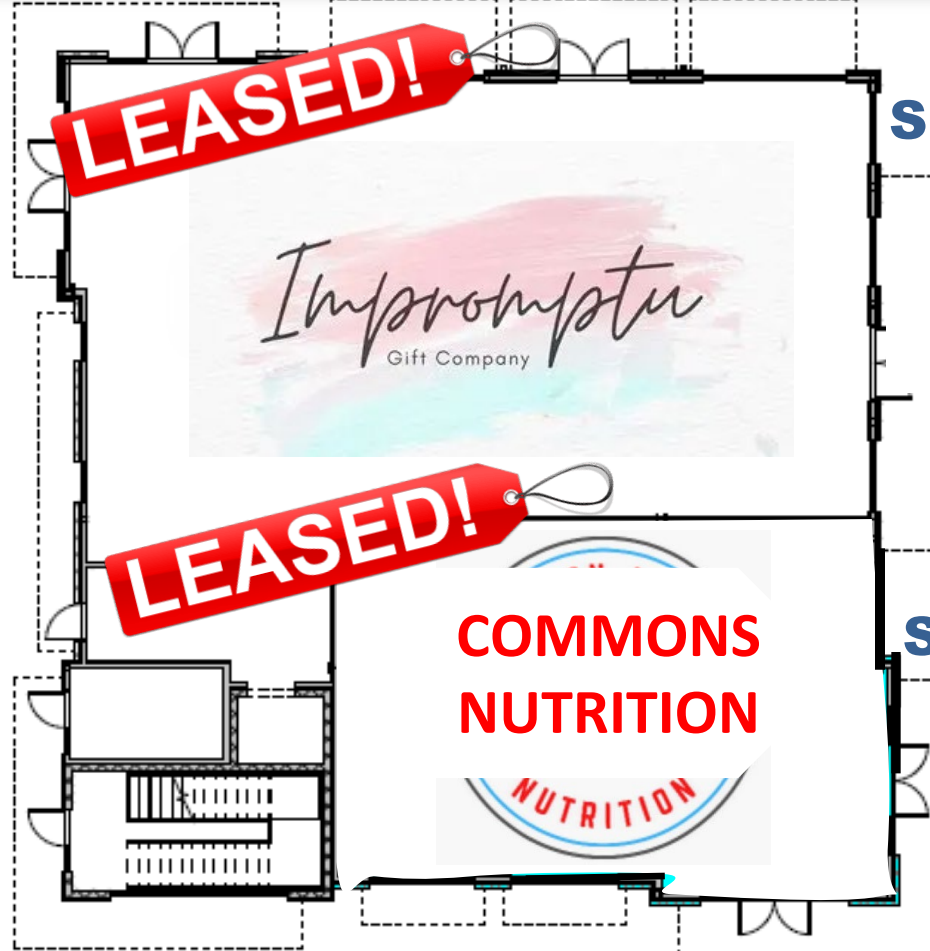
THE COMMONS | PHASE IV

BUILDING F | ONE LEVEL FLOOR PLAN



THE COMMONS | PHASE IV

BUILDING D | GROUND FLOOR LAYOUT



SUITE D-101

FIRST FLOOR RETAIL
100% LEASED

SUITE D-102



THE COMMONS | PHASE IV

BUILDING E | RESTAURANT SPACE



RENDER - SW CORNER



RESTAURANT SPACE
4,543 SF

AREA LAYOUT



HWY 30: AADT: 13,000 +

HWY 7: 20,000+ AADT

SISK AVENUE

COMMONWEALTH BLVD

The Summit

The Ruby

The Commons Phase I - IV

The Terrace

Oxford High School

The Pearl Apartments

The Park

The Magnolia at Oxford Commons

The Crossing at Oxford Commons

tru

MALCO THEATRES

McDonald's

Hampton Inn by Hilton

Shell

FNB

CHIPOTLE MEXICAN GRILL

Dutch Bros

WHATABURGER

Citizens

Chick-fil-A

Della Davidson ELEMENTARY SCHOOL

TownePlace Suites by Marriott

Home (multiple icons)

EXPERIENCE OXFORD COMMONS

Oxford Commons is an inviting and picturesque master-planned community with a charming story book setting of beautiful tree-lined streets and thoughtfully crafted homes. Winding trails that connect residents with countless amenities nearby, creating a beautifully livable neighborhood that feels unique yet perfect for the area. The community's ideal location make it easy to get anywhere in minutes. This growing community now has more residential options sure to fit your lifestyle. Soon you'll be able to gather at "The Commons" and enjoy a new way of life in an exciting place!

WHAT TO EXPECT

Whether you are looking for boutique shopping, local flavors, or open outdoor spaces to relax and unwind, "The Commons" will be the place to be.

- Two large restaurants
- Mixed use buildings including:
 - Brand new office spaces
 - Retail venues
 - Residential living opportunities with "The Commons"

EXPERIENCE A VIBRANT COMMUNITY

- Walk to shopping, dining, and entertainment
- Four miles from tailgating at The Grove and game day shuttle from the high school
- Minutes from Oxford's private airport or The Square
- Gorgeous landscaping, beautiful walking trails and lake views
- Adjacent movie theater and bowling alley
- On-site exemplary elementary school
- #1 High school in Mississippi just across the street

UNBEATABLE OXFORD, MS LIVING

Located just minutes from the historic Square, our homes offer easy access to major highways and fall within the esteemed Oxford School District. The premier Oxford location ensures an effortless commute to Ole Miss for classes or gamedays and exceptional proximity to unique shopping, dining, and entertainment on The Square, all promising a convenient and vibrant living experience.



Developed by



OXFORD, MS RANKINGS



A+ Overall Ranking amongst cities of its size
A+ Amenities
B Cost of Living
A Crime



#1 Best Places for Young Professionals in Mississippi
#5 Best Places to Live in Mississippi
#5 Oxford High School | Best College Prep Public HS
#11 Best Places to Raise a Family in Mississippi
#12 Best Places to Retire in Mississippi



#4 Best Public Square in the US “The Square”



#10 Best Small City for Football Fans



#1 Best Small Town
#19 Best Weekend Getaways in the South
#2 Best College Town in the US

Ranked #51

2024
ECONOMIC STRENGTH RANKINGS
(Out of 543 Micropolitan Areas)

Micropolitan Statistical Areas are “quasi-rural,” smaller areas. A Micropolitan Area must have a city of at least 10,000 people, but fewer than 50,000. It must be at least one county, and many are a single county. There are 543 Micropolitan Statistical Areas (OMB Bulletin 20-01). One of the important criteria for POLICOM’s rankings is the “consistency” of the economy.

The City of Oxford DEMOGRAPHICS



\$82,677
Household
Income



29-33
Median Age



\$295,978
Median Home Value



KEY DATA

Based on a 5 Mile Radius of OXFORD



38,447
Total Population
1.9% ↑



\$459 Million
Total Specified Consumer
Spending



16,248
Households
1.7% ↑

BROKERS:

FRANK DYER III, CCIM, RPA
Senior Vice President of Brokerage
(C) 901.277.8183
frank@gillprop.com

BARRY MAYNARD
Senior Vice President of Brokerage
(C) 901.230.4265
barry@gillprop.com

The City of Oxford, MS



The Grove

US HWY 278



Belk Blvd



Baptist Hospital Oxford

HWY 30

MS-7

Sisk Ave.



S Lamar Blvd

MS-7



COMING SOON

Sullivan's Marketplace
OXFORD COMMONS