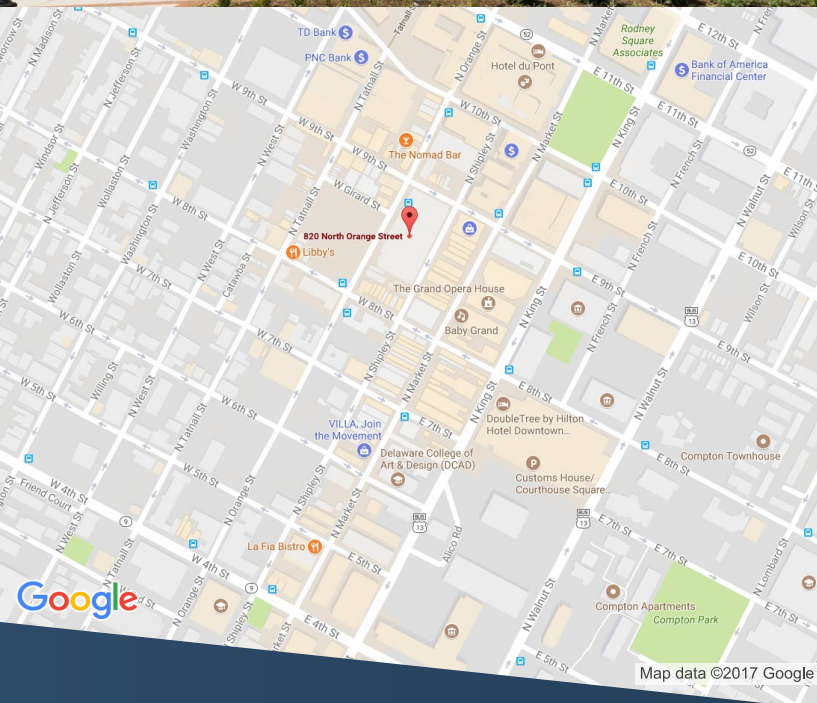


# AVAILABLE

MID-TOWN PARK, WILMINGTON, DE 19801



*Mid-town Park*

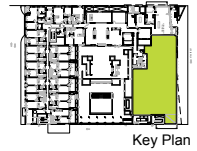
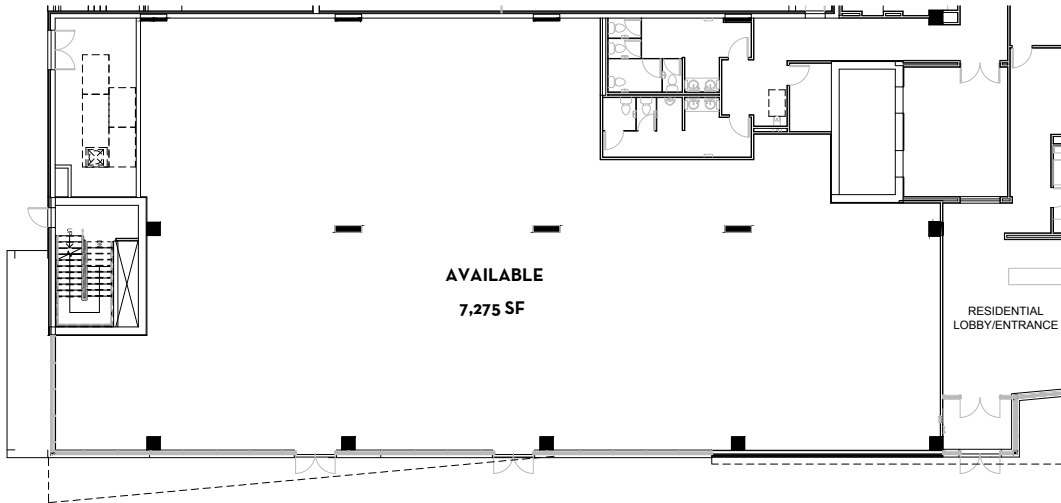
## Location:

820 North Orange Street  
Wilmington, DE 19801



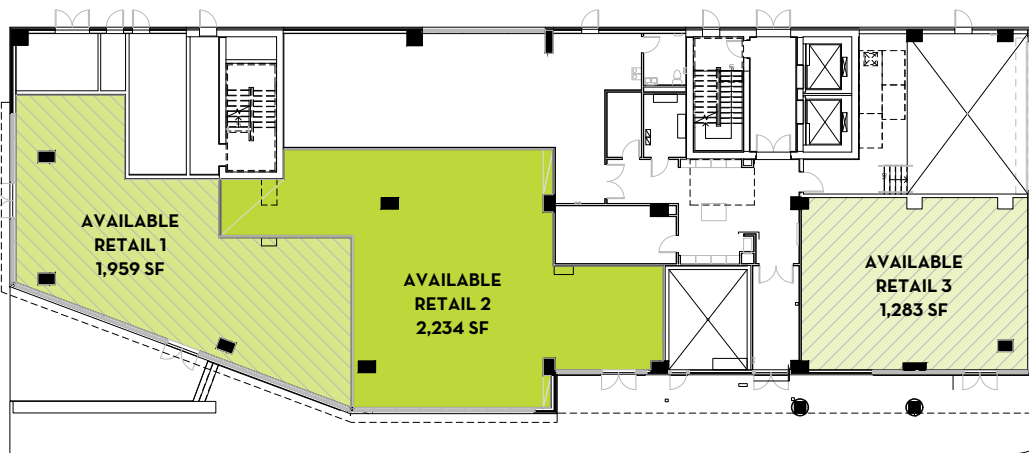
For more information please contact:  
Kate Vaughan | 302.691.4066 | [kvaughan@virtusREA.com](mailto:kvaughan@virtusREA.com)

# Mid-town Park



Ground Floor Retail Space • Building 1

← 9TH STREET



Ground Floor Retail Space • Building 2

## Property highlights

- Convenient downtown location near Market Street and the business district
- Open floor plan
- Total available SF Building 1 • 7,275 SF
- Total available SF Building 2 • 5,476 SF
- Located below 200 luxury apartments
- Located 1 block off Rodney Square
- On-site 500 space below-grade parking garage



**VIRTUS**  
REALTY ADVISORS

For more information please contact:

Kate Vaughan | 302.691.4066 | [kvaughan@virtusREA.com](mailto:kvaughan@virtusREA.com)