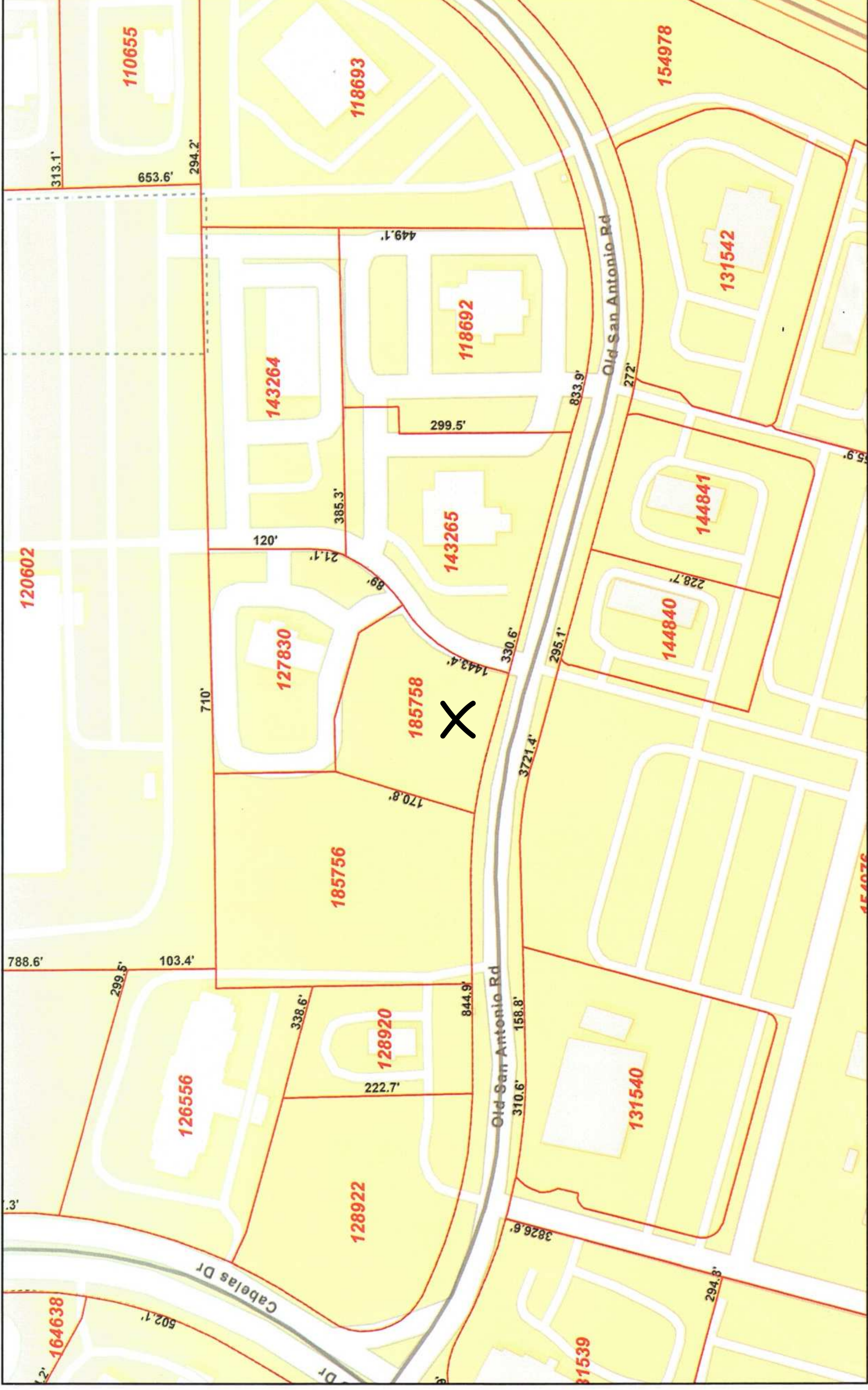
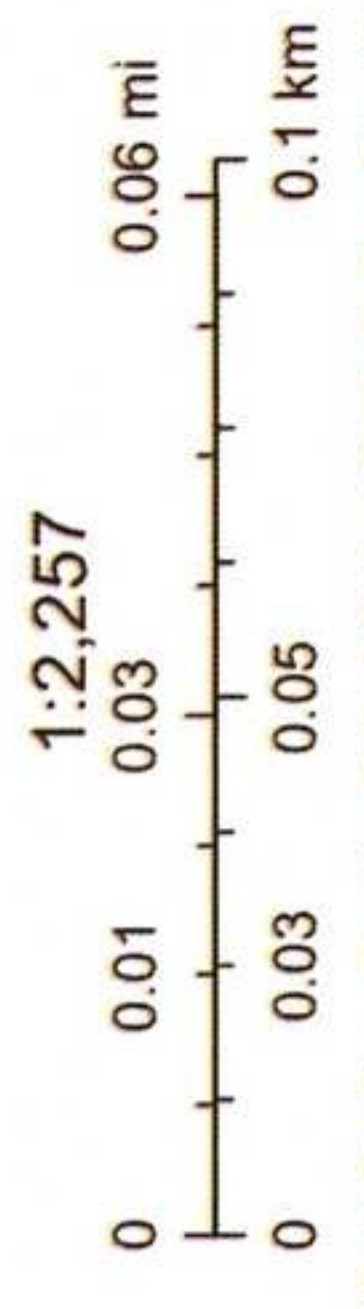


Hays CAD Web Map



2/17/2026, 6:31:53 PM

- Parcels
- Lot Lines
- Abstracts
- Streets



Sources: Esri, TomTom, Garmin, FAO, NOAA, USGS, © OpenStreetMap contributors, and the GIS User Community

Hays County Appraisal District, BIS Consulting - www.bisconsulting.com
 Disclaimer: This product is for informational purposes only and has not been prepared for or be suitable for legal, engineering, or surveying purposes. It does not represent an on-the-ground survey and represents only the approximate relative location of boundaries.