

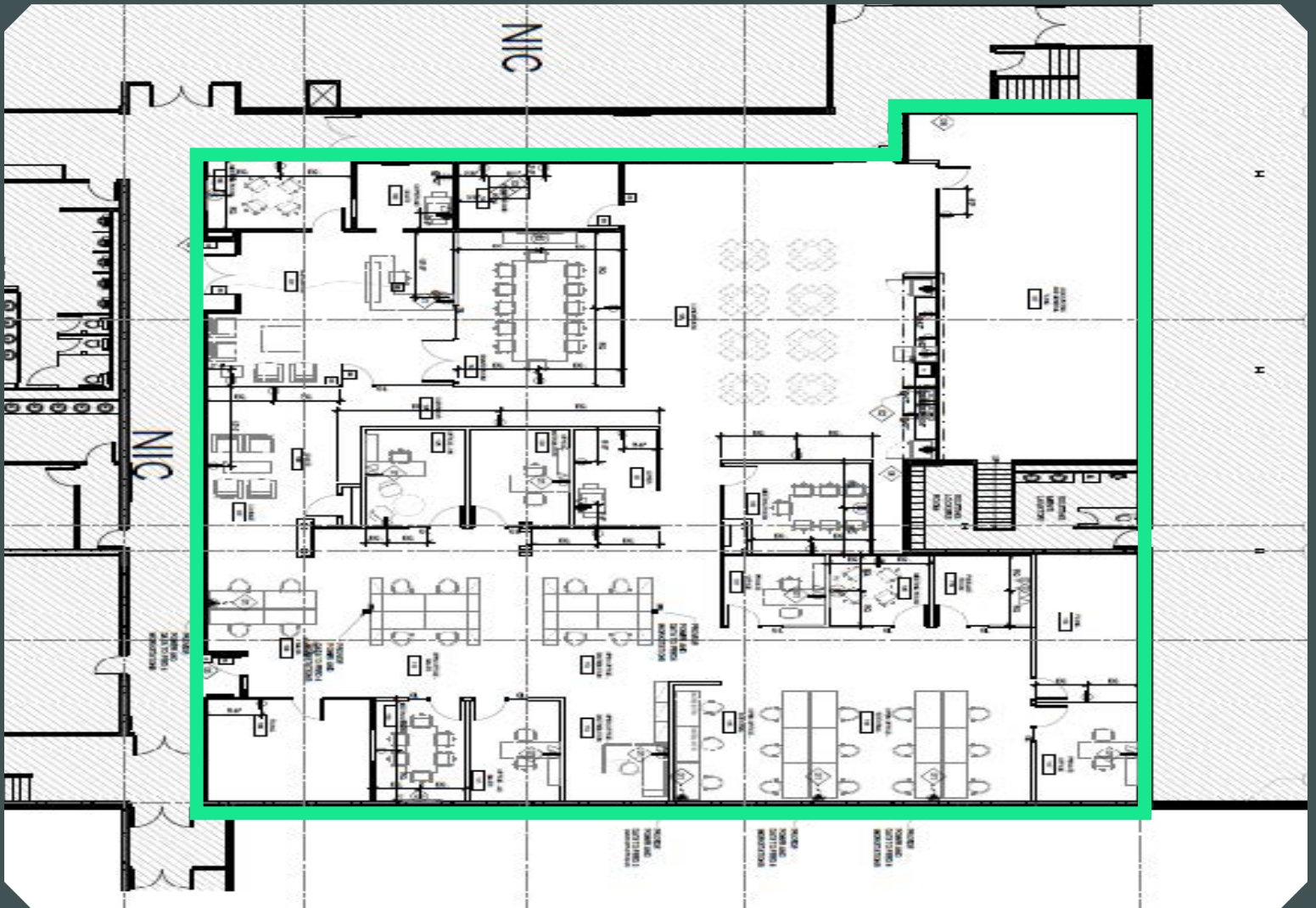
300 - 1964 Park Street

Leader Place, Regina, SK

1964 Park Street
Regina, SK, S4N 7M5
www.cbre.ca/regina

10,902 SF of Office Space Available





Property Details

1964 Park Street boasts a prime location at the corner of Victoria Avenue and Park Street. High traffic flows and excellent visibility provides great exposure to Victoria Avenue.

The available unit is suitable for office/professional uses.

Contact us for more details.

60K

Average Daily Traffic Count

2019

Renovations Completed

10.9K

Available Space



Leader Place

1964 Park Street | Regina, SK

For Lease

Leasing Details

- + Net Rent:
\$5.00 PSF
- + Operating Costs:
\$10.87 PSF (utilities
included)
- + Available Unit:
#300 - 10,902 SF
- + Zoning: IL
- + Large Staff Area &
Common Space
- + 11 Offices/ Break
Rooms
- + Large Boardroom &
Filestorage area



Contact Us

Walker Moulding

Associate Vice President
+1 306 501 0609
Walker.Moulding@cbre.com

Erik Mehlsen

Senior Sales Associate
+1 306 539 9754
Erik.Mehlsen@cbre.com

Mariah Taylor-Mackin

Sales Associate
+1 306 525 2773
Mariah.Taylormackin@cbre.com

© 2026 CBRE, Inc. All rights reserved. This disclaimer shall apply to CBRE Limited, and to all divisions of the Corporation ("CBRE"). The information set out herein (the "Information") has not been verified by CBRE, and CBRE does not represent, warrant or guarantee the accuracy, correctness and completeness of the Information. CBRE does not accept or assume any responsibility or liability, direct or consequential, for the Information or the recipient's reliance upon the Information. The recipient of the Information should take such steps as the recipient may deem necessary to verify the Information prior to placing any reliance upon the Information. The Information may change and any property described in the Information may be withdrawn from the market at any time without notice or obligation to the recipient from CBRE.