



AVAILABLE



PROPERTY SPECS

- Visibility From I-95
- Located in a Professional Business Park
- Easy Access to I-95 & I-20
- Centrally Located to all parts of Florence
- 28 Front Parking Spaces
- Additional Rear Parking Available

FOR LEASE: 2240 N Douglas St | Florence, SC

5,000 SF OFFICE/RETAIL SUITE AVAILABLE | PROFESSIONAL BUSINESS CENTER

This office building is located within a well-established professional business park and offers strong visibility from I-95. The property provides convenient access to both I-95 and I-20 and is centrally positioned for easy access to all areas of Florence. The surrounding area includes a mix of professional offices, industrial users, and commercial services, creating a stable and active business environment. On-site parking includes 28 front spaces, with additional parking available at the rear of the building.

AVAILABLE:

Suite C: ±5,000 SF

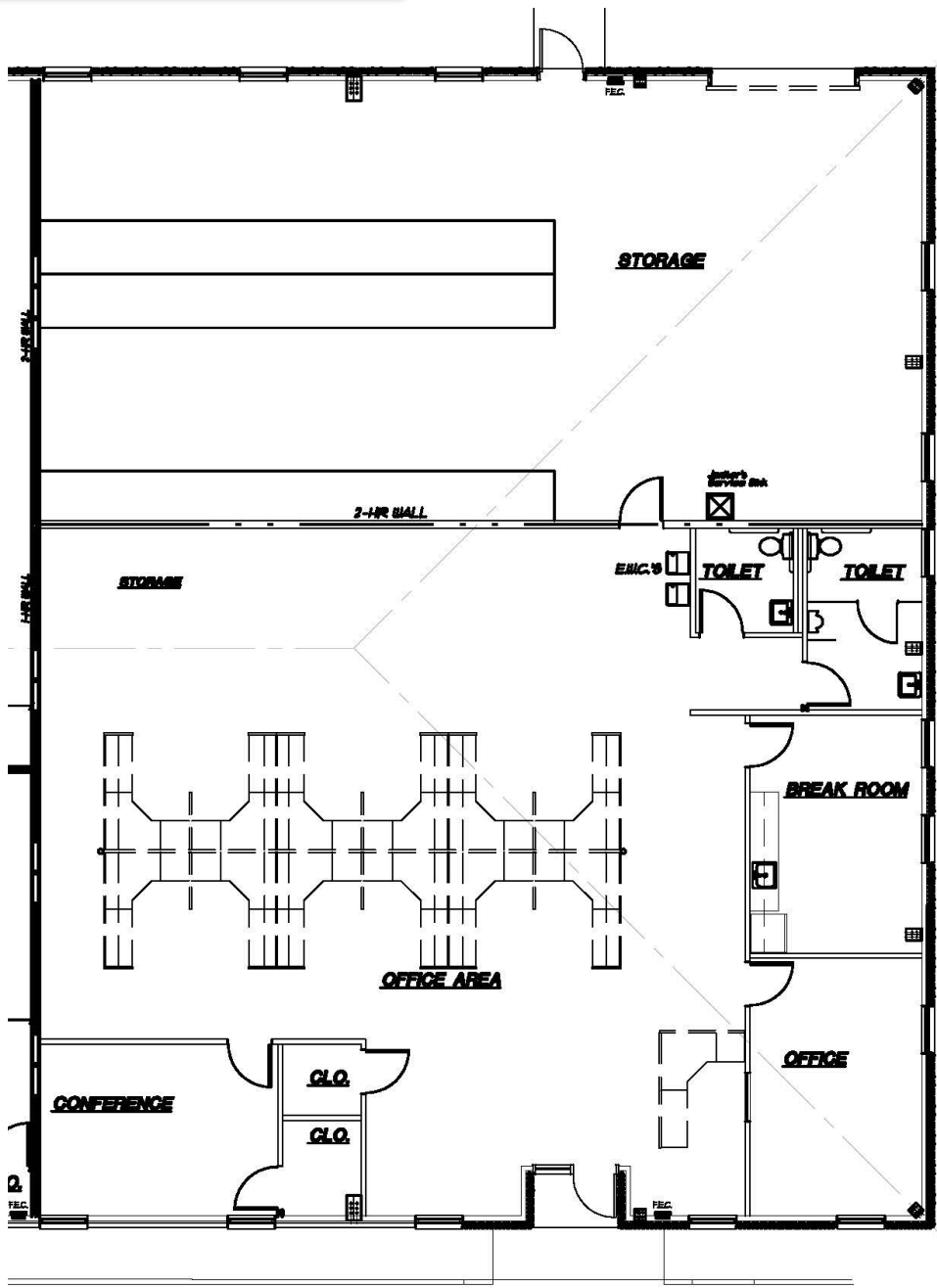
⇒ Large Open Floor Area + 2 Offices + Break Room + 2 Restrooms + Warehouse Storage Space



135 S Dargan St. Suite 301 | Florence, SC 29506 | Phone (843) 667-4999 | www.palmettocommercial.com

No warranty or representation is made as to the accuracy of the information contained herein.

SUITE C:



135 S Dargan St. Suite 301 | Florence, SC 29506 | Phone (843) 667-4999 | www.palmettocommercial.com

No warranty or representation is made as to the accuracy of the information contained herein.



EXIT 164

SNIDER
FLEET SOLUTIONS
Going The Distance

ORKIN

DGI
SUPPLY

ARC3
GASES

FASTENAL

OTIS

N DOUGLAS ST

MCHANICSVILLE RD

INTERSTATE
95

AVAILABLE

FBI
CONSTRUCTION



135 S Dargan St. Suite 301 | Florence, SC 29506 | Phone (843) 667-4999 | www.palmettocommercial.com

No warranty or representation is made as to the accuracy of the information contained herein.