

Hwy 287 Frontage

For Lease

3080 W Highway 287 Bypass,
Waxahachie, Texas 75167



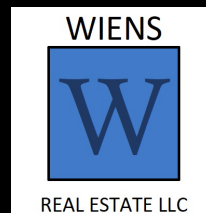
Midlothian/Waxahachie
High Growth
Market



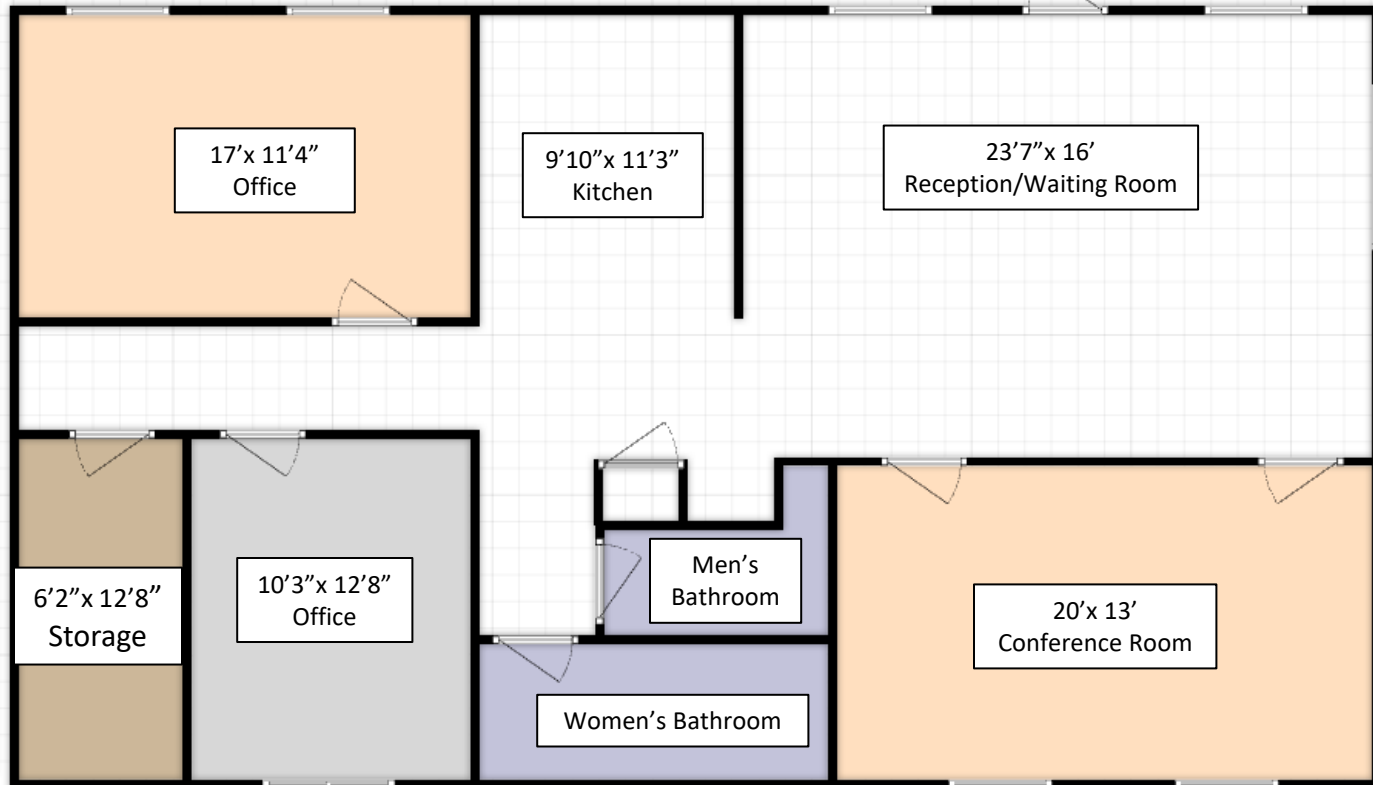
1,690 SF
Hwy Signage
Reception Area
Conference Room
Kitchen
2-4 Offices
Storage/Electrical Room
Men's and Women's
Restrooms



Professional
Office Space
with
Great Hwy Visibility



Kim Wiens
972-816-2008
wiens@flash.net
Kimberly Klor
817-948-6940



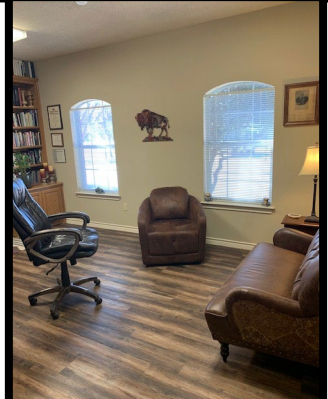
17 Parking Spaces/2 Handicap Parking Spaces

Floor Plan

Fully Furnished



Kim Wiens 972-816-2008
 wiens@flash.net
 Kimberly Klor 817-948-6940



3080 W Highway 287 Bypass, Waxahachie, Texas 75167

Conveniently Located Next to Midway Airport on Hwy 287
between Waxahachie and Midlothian





THANK
YOU!

Wiens Real Estate LLC

Phone:
972-816-2008
817-9480-6940

Email:
wiens@flash.net
kimberlyaklor@gmail.com

Broker:
Kim Wiens