

AREA OF MINIMAL FLOOD HAZARD  
Zone X

Highway 31 W

Old Louisville Hwy  
East Fork Slaters Creek

118-184.00  
3.057 acres

**FOR SALE**

# Multifamily Development

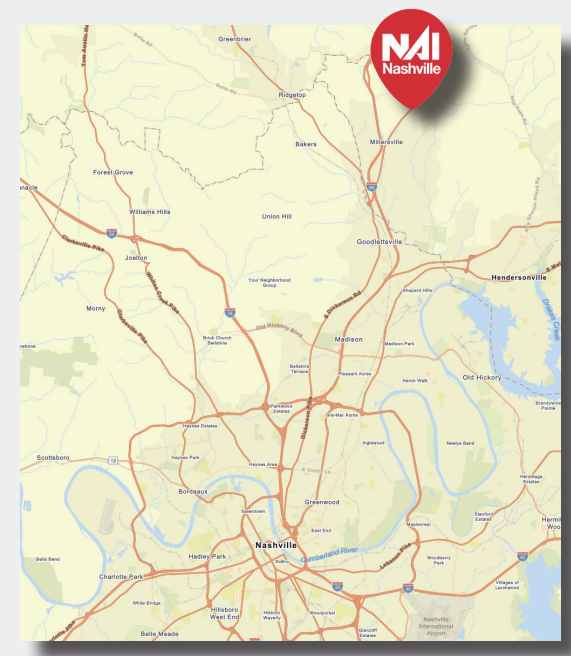
1381 Hwy 31W, Millersville, Tennessee 37072

*Fully entitled shovel-ready multifamily development.*

## PROPERTY HIGHLIGHTS

- + ± 2.85 acre development site
- + Asking Price: \$875,000
- + Zoned: Multi-Family Residential
- + Approved for a 60-unit apartment complex
- + 3.5-miles to I-65 access at Hwy 31W
- + Site is located 19-miles north of downtown Nashville

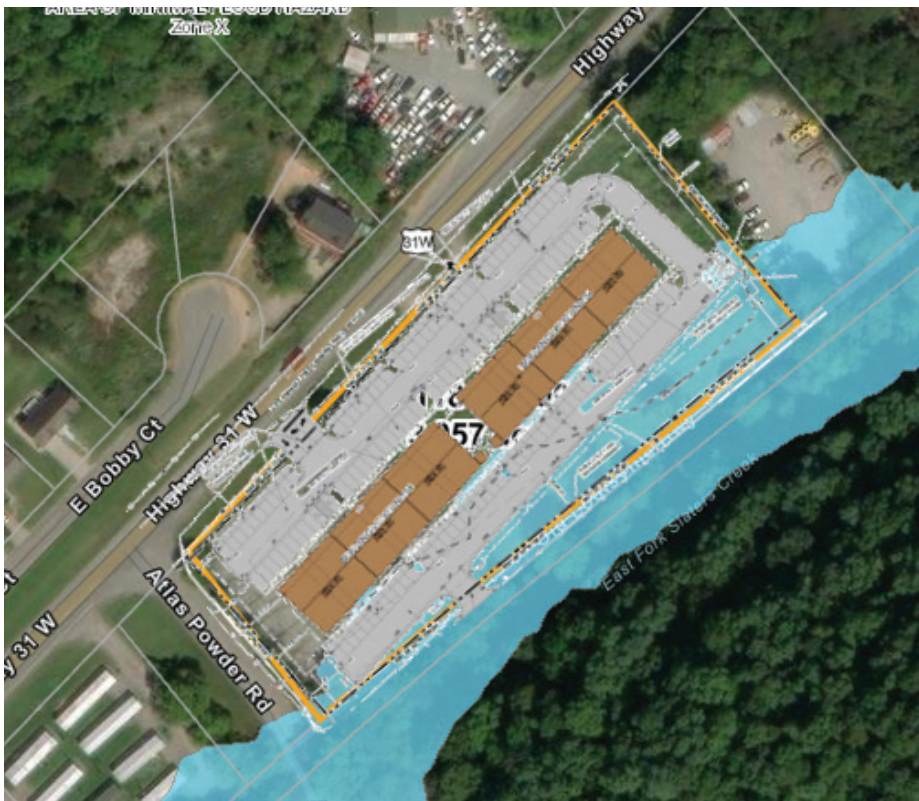
**SCOTT ANDREWS, CCIM**  
Senior Vice President  
615 622 9073  
sandrews@nainashville.com



THE INFORMATION CONTAINED HEREIN HAS BEEN GIVEN TO US BY THE OWNER OF THE PROPERTY OR OTHER SOURCES WE DEEM RELIABLE. WE HAVE NO REASON TO DOUBT ITS ACCURACY, BUT WE DO NOT GUARANTEE IT. ALL INFORMATION SHOULD BE VERIFIED PRIOR TO PURCHASE OR LEASE.



# Development Details



36,780  
TOTAL POPULATION  
5-MILE RADIUS



\$96,028  
MEDIAN HOUSEHOLD INCOME  
5-MILE RADIUS



\$418,990  
AVERAGE HOME VALUE  
5-MILE RADIUS



28,995  
TOTAL DAYTIME POPULATION  
5-MILE RADIUS

