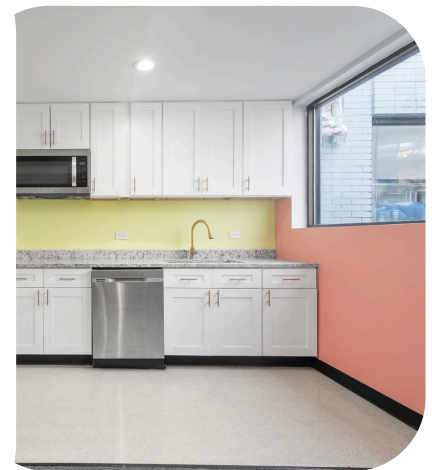
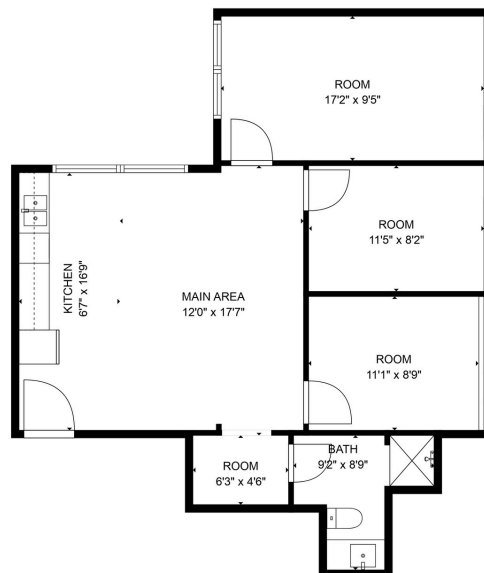




# NEXT-LEVEL MODERN WORKSPACES

*For Lease*

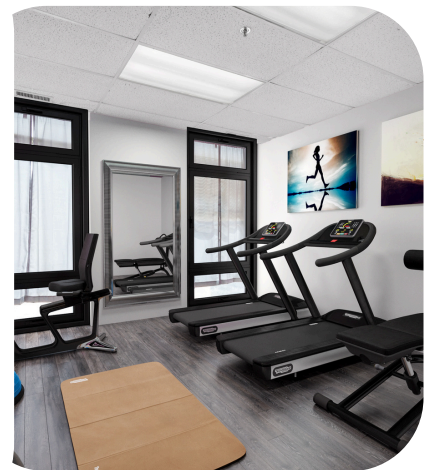
Looking for a professional space where your team can thrive? This spacious 3-room executive suite offers everything you need—huge windows for natural light, a private kitchen, and a full bathroom with a shower for ultimate convenience. Parking sold separately.





# BUILD YOUR DREAM SPACE YOUR WAY! *For Lease*

Looking for a custom-built office, salon, or multi purpose suite at an unbeatable price? This blank canvas offers 8-ft ceilings, expansive windows, and endless possibilities. Create private offices, a creative studio, or a modern business hub tailored to your needs. Located in a secure, well-maintained building with private parking available separately and easy highway access. Available space up to 1050/sqft  
Build your ideal space—your way!



Lieba 412-915-0539



[leasing@risingdevelopmentgroup.com](mailto:leasing@risingdevelopmentgroup.com)



# PROFESSIONAL PRIVATE OFFICE

## *For Lease*

Ideal for lawyers, accountants, therapists, and solopreneurs, this versatile two-room office offers a quiet, secure space to grow your business. Located in a highly vetted, well-maintained building, you'll work alongside friendly professionals in a safe, welcoming environment. With spaces ranging from \$500-\$850, this is your chance to design a workspace that truly reflects your vision and needs.




 Lieba 412-915-0539

 [leasing@risingdevelopmentgroup.com](mailto:leasing@risingdevelopmentgroup.com)

# Misha Ayroso

MARKETING & LISTING MANAGER



 (708) 317-8689

 [marketing@risingdevelopmentgroup.com](mailto:marketing@risingdevelopmentgroup.com)

 [www.risingdevelopmentgroup.com](http://www.risingdevelopmentgroup.com)

**Misha Ayroso**  
MARKETING & LISTING MANAGER

