

3979 OLD LINWOOD RD
L E X I N G T O N , N C



Price PSF Reduced:
\$4.30 psf NNN

Industrial/Warehouse
±163,988 SF

**FOR
LEASE**



PROPERTY HIGHLIGHTS

- Building 3 For Lease - ±163,988 SF
- Price Reduced: \$4.30 PSF, NNN
- 17' - 19'6" Clear Ceiling Height
- One (1) Oversized 20'x16' Roll-up Drive-In Door
- Ten (10) Dock high Doors with Seals and Levelers; Fresh paint on Docks and Loading areas
- 30'x30' Column Spacing
- Property less than one (1) mile away from I-85 and KEXX Regional Airport (5004' Runway)
- Internal Warehouse offices
- 20 Interior Circulation Fans/Multiple Wall Mounted Exhaust Fans
- LED & Ambient Lighting
- Approved for Railroad Spur to Building

NAI Piedmont Triad

Commercial Real Estate Services, World Wide

WILL BLACKWELL, SIOR
BROKER
336.345.1500
wblackwell@naipt.com

ELIJAH KNIGHT
BROKER
336.618.3562
eknight@naipt.com

250 W. First Street, Suite 301 - Winston-Salem, NC 27101 • naipt.com



This material may contain content generated with AI assistance and publicly sourced data. NAI Piedmont Triad makes every effort to verify the information but makes no warranties or representations regarding the accuracy, completeness, or reliability of the information. Independent verification of all details is strongly encouraged. Prices, terms, and availability are subject to change without prior notice.

WILL BLACKWELL, SIOR
BROKER
336.345.1500
wblackwell@naipt.com

ELIJAH KNIGHT
BROKER
336.618.3562
eknight@naipt.com



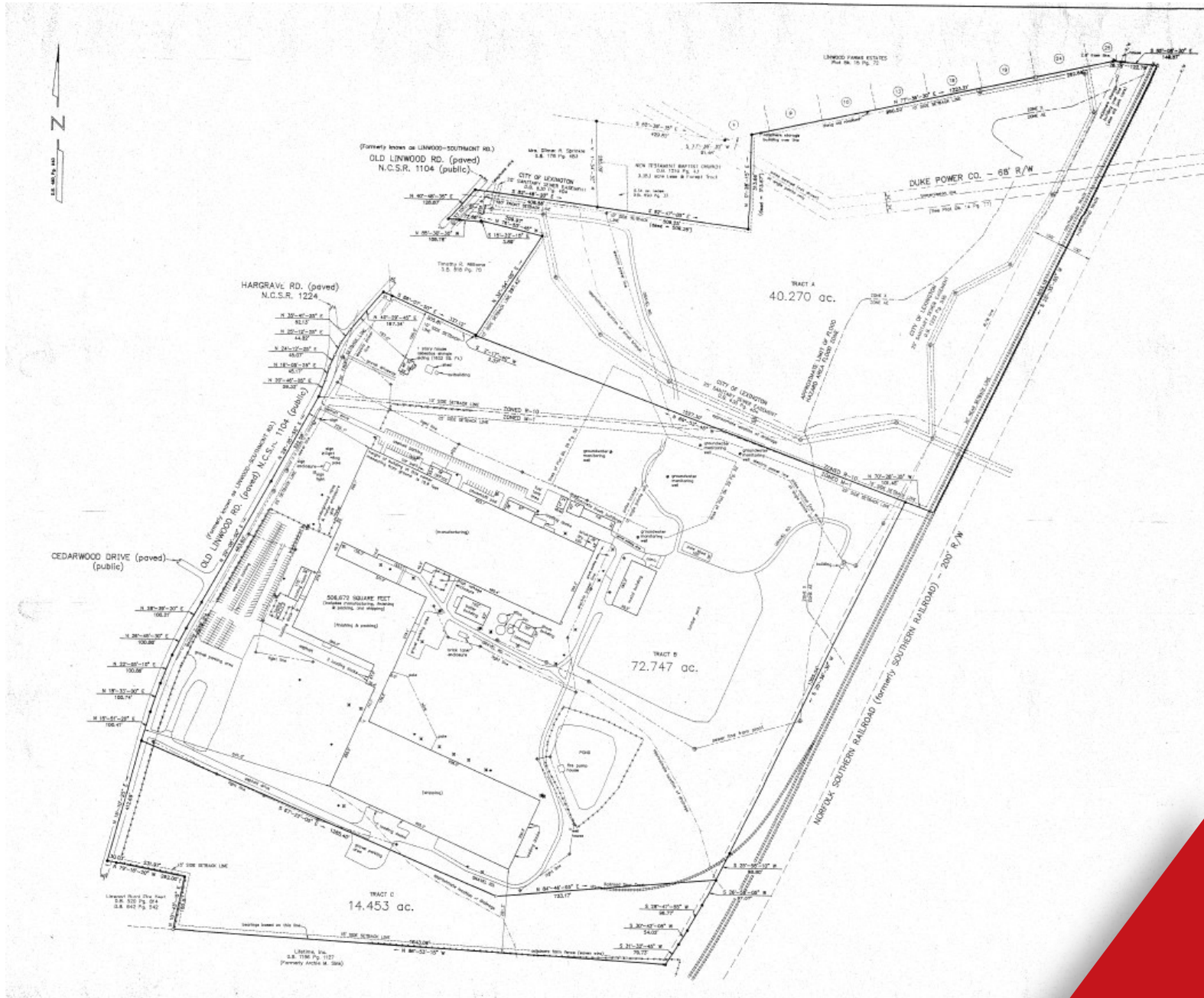
This material may contain content generated with AI assistance and publicly sourced data. NAI Piedmont Triad makes every effort to verify the information but makes no warranties or representations regarding the accuracy, completeness, or reliability of the information. Independent verification of all details is strongly encouraged. Prices, terms, and availability are subject to change without prior notice.

WILL BLACKWELL, SIOR
BROKER
336.345.1500
wblackwell@naipt.com

ELIJAH KNIGHT
BROKER
336.618.3562
eknight@naipt.com

250 W. First Street, Suite 301 - Winston-Salem, NC 27101 • naipt.com

SURVEY WITH PROPOSED RAIL SPUR



This material may contain content generated with AI assistance and publicly sourced data. NAI Piedmont Triad makes every effort to verify the information but makes no warranties or representations regarding the accuracy, completeness, or reliability of the information. Independent verification of all details is strongly encouraged. Prices, terms, and availability are subject to change without prior notice.

WILL BLACKWELL, SIOR
BROKER
336.345.1500
wblackwell@naipt.com

ELIJAH KNIGHT
BROKER
336.618.3562
eknight@naipt.com