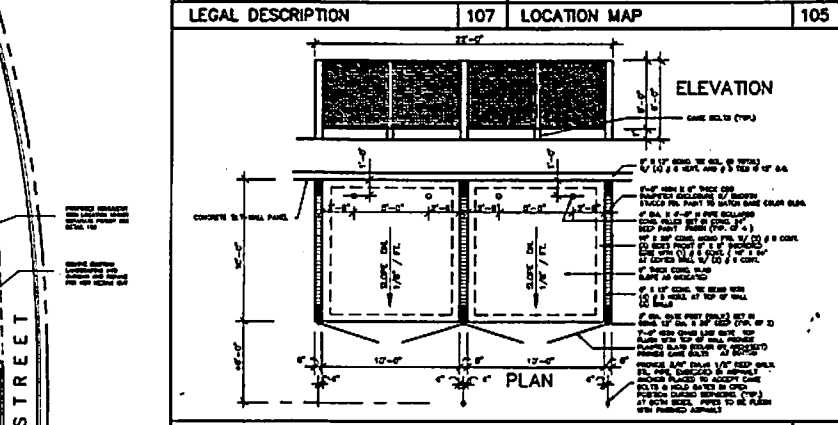
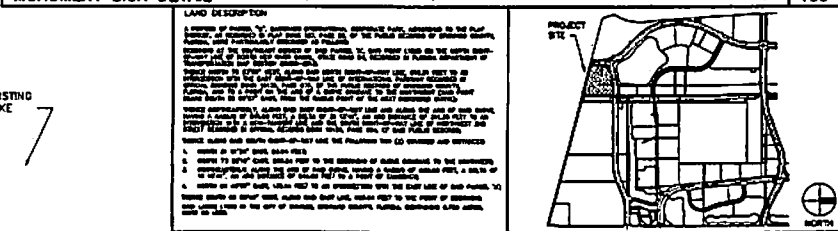
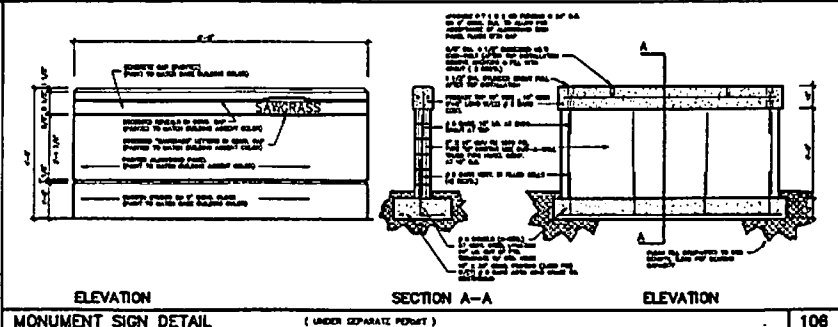


**SITE PLAN**



<p><b>ADDITION:</b></p> <p><b>ZONE:</b></p> <p><b>BUILDING CODE:</b></p> <p><b>OCCUPANCY:</b></p> <p><b>CONSTRUCTION TYPE:</b></p> <p><b>SITE CALCULATIONS:</b></p> <p><b>SITE BLFT:</b></p> <p><b>BUILDING BLFT:</b></p> <p><b>OFFICE LFTD:</b></p> <p><b>REARDOOR:</b></p> <p><b>PARKING REQUIRED:</b></p> <p><b>OFFICE 1/20:</b></p> <p><b>REARDOOR 1/20:</b></p> <p><b>PARKING PROVIDED:</b></p> <p><b>REARDOOR:</b></p> <p><b>REARDOOR:</b></p>	<p><b>QTY OF BARGE:</b></p> <p><b>1-1 (INDUSTRIAL)</b></p> <p><b>SOUTH FLORIDA BUILDING CODE PERMITTED SECTION 1903</b></p> <p><b>GROUP 1, DIVISION 1</b></p> <p><b>SITE IV</b></p> <p><b>BLDG. AREA:</b> 34,302 SF</p> <p><b>BUILDING FOOTPRINT:</b> 42,100 SF (71.36 AC)</p> <p><b>PERVIOUS AREA:</b> 17,700 SF (31.25 AC)</p> <p><b>4.75' ADDED</b></p> <p><b>45.10' BLFT.</b></p> <p><b>3.10' BLFT.</b></p> <p><b>62.50' BLFT.</b></p> <p><b>75' SPACES</b></p> <p><b>8' SPACES</b></p> <p><b>87' SPACES</b></p> <p><b>127' SPACES</b></p> <p><b>11' SPACES</b></p> <p><b>11' SPACES</b></p>
--	--

**103**

**SITE LIGHTING DETAIL**

**102**

**SITE DATA**

**101**

**ARCHITECT:**

**PROJECT NO.:**

**DATE:**

**SCALE:**

**CONCILIANT:**

**Architecture 6400 Inc.**

**A Division of Stiller Corporation**

**6400 North Andrews Avenue**

**Fort Lauderdale, Florida**

**305-776-9180**

**33309**

**A PROPOSED FACILITY FOR:**

**SPEC WAREHOUSE**

**PARCEL 28**

**SAWGRASS**

**INTERNATIONAL CORPORATE PARK**

**SUNRISE, FLORIDA**

**TITLE:**

**FLORIDA POWER & LIGHT**

**101**

**A-1**

**DATE:**

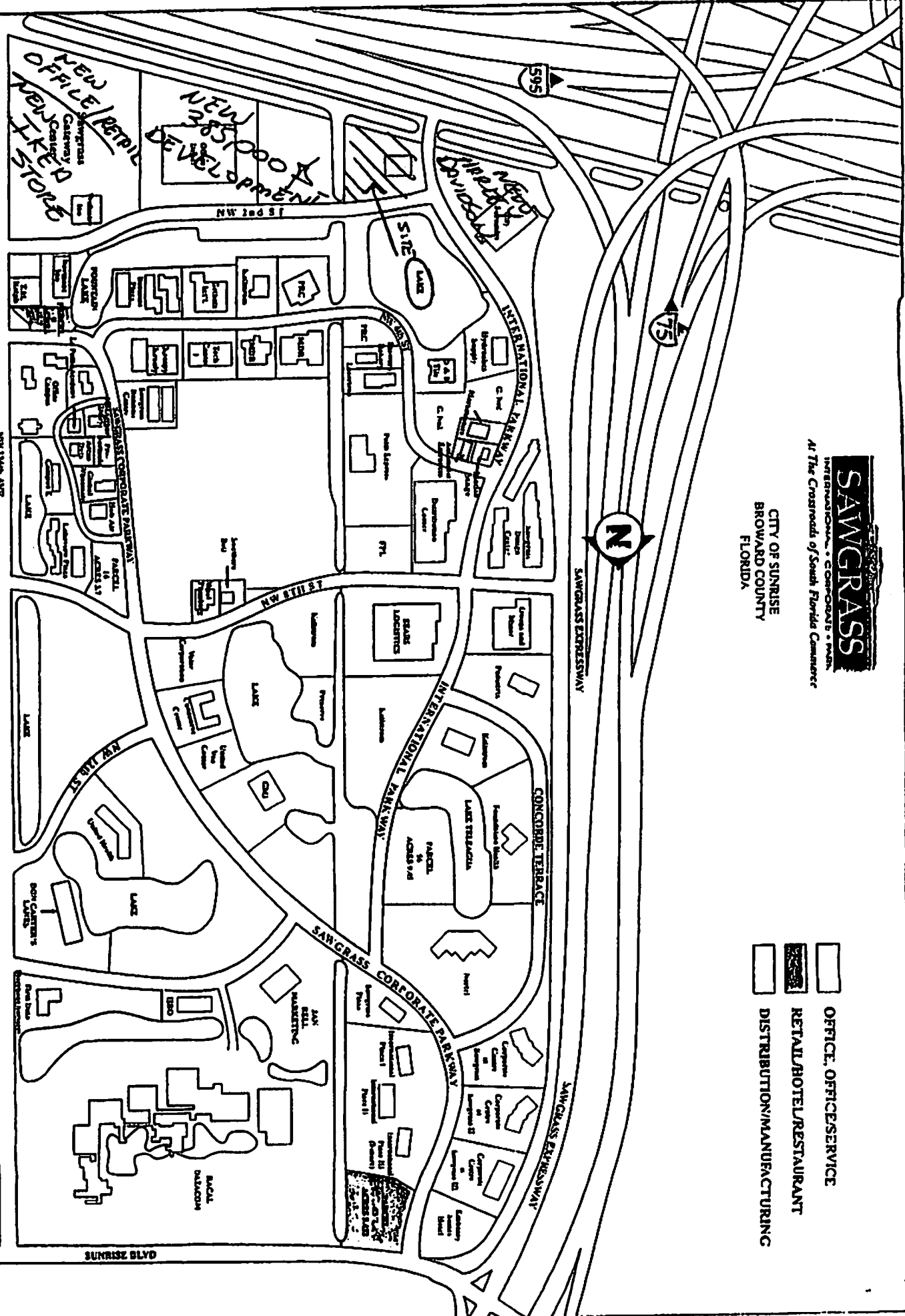
**BY:**

**SCALE:**

**SAWGRASS**  
 INTERNATIONAL • CORPORATION • PARTNERS  
 At The Crossroads of South Florida Commerce

CITY OF SUNRISE  
 BROWARD COUNTY  
 FLORIDA

- OFFICE, OFFICESERVICE
- RETAIL/HOTEL/RESTAURANT
- DISTRIBUTION/MANUFACTURING

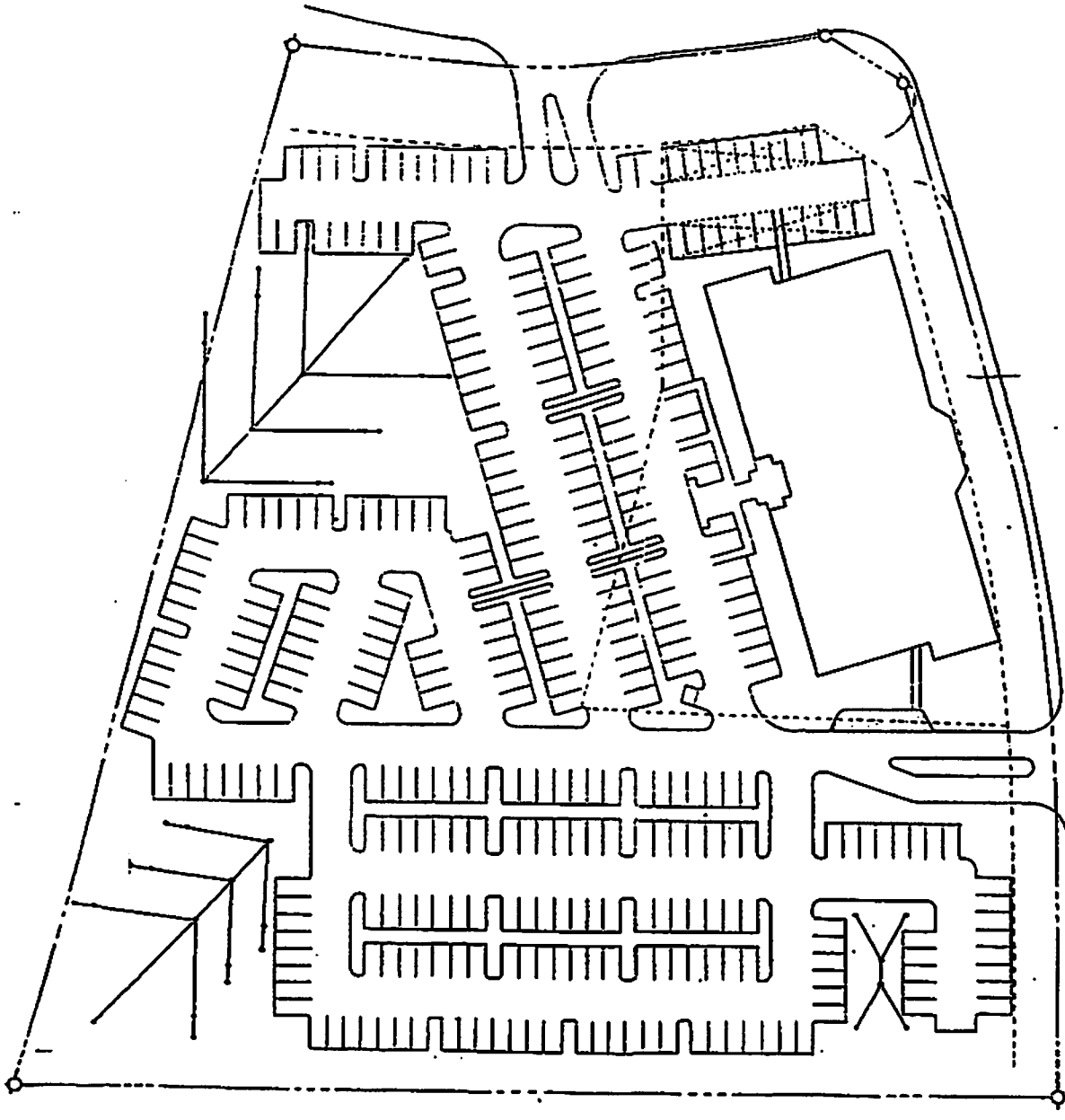


**ILLUSTRATIVE  
 MASTER PLAN**



**WLD**  
 CORPORATION  
 Enterprises, Inc.  
 Joint Venture Developer in Sawgrass International Corporate Park

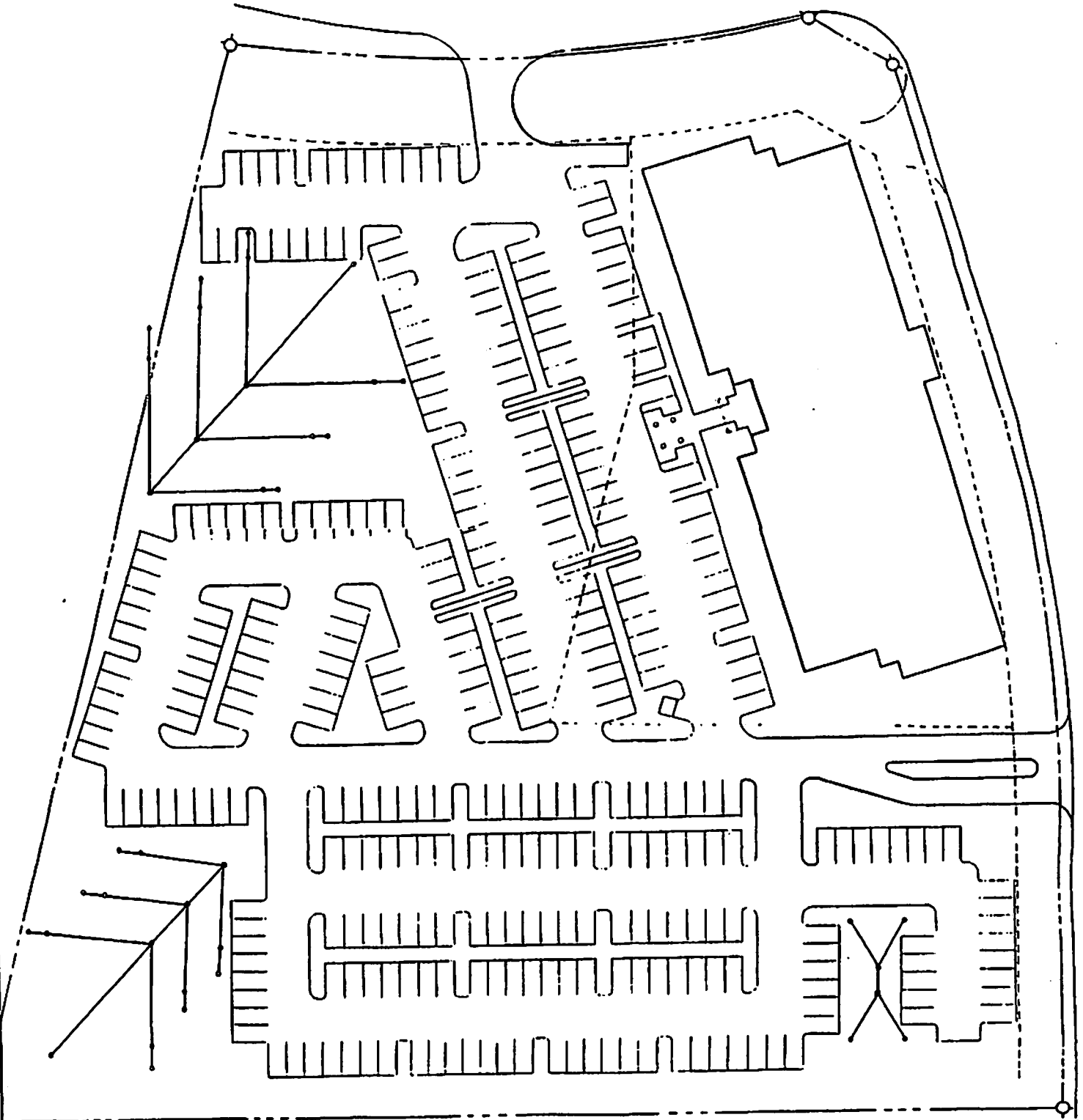
**ON SITE LEASING  
 OFFICE**  
 (954) 846-1177 (Broward)  
 (305) 949-1404 (Dade)



OFFICE BLDG. : 75,000 SQ.FT. GROSS  
9,000 SQ.FT. COMM. (12%)  
66,000 SQ.FT. NET

PARKING (NET): 264 REQ'D  
330 at 5:1  
343 PROVIDED

323 OPEN (6 H.C.)  
20 COVERED (2 H.C.)



OFFICE BLDG. :  
42000 sq ft

PARKING (NET) :  
325th  
St  
Spces