

Salinas Home Center

At the Westridge Power Center
Hwy 101 at Laurel Dr. Exit to N. Davis Rd.
Salinas, California



Retail & Medical Offices

Westridge Power Center

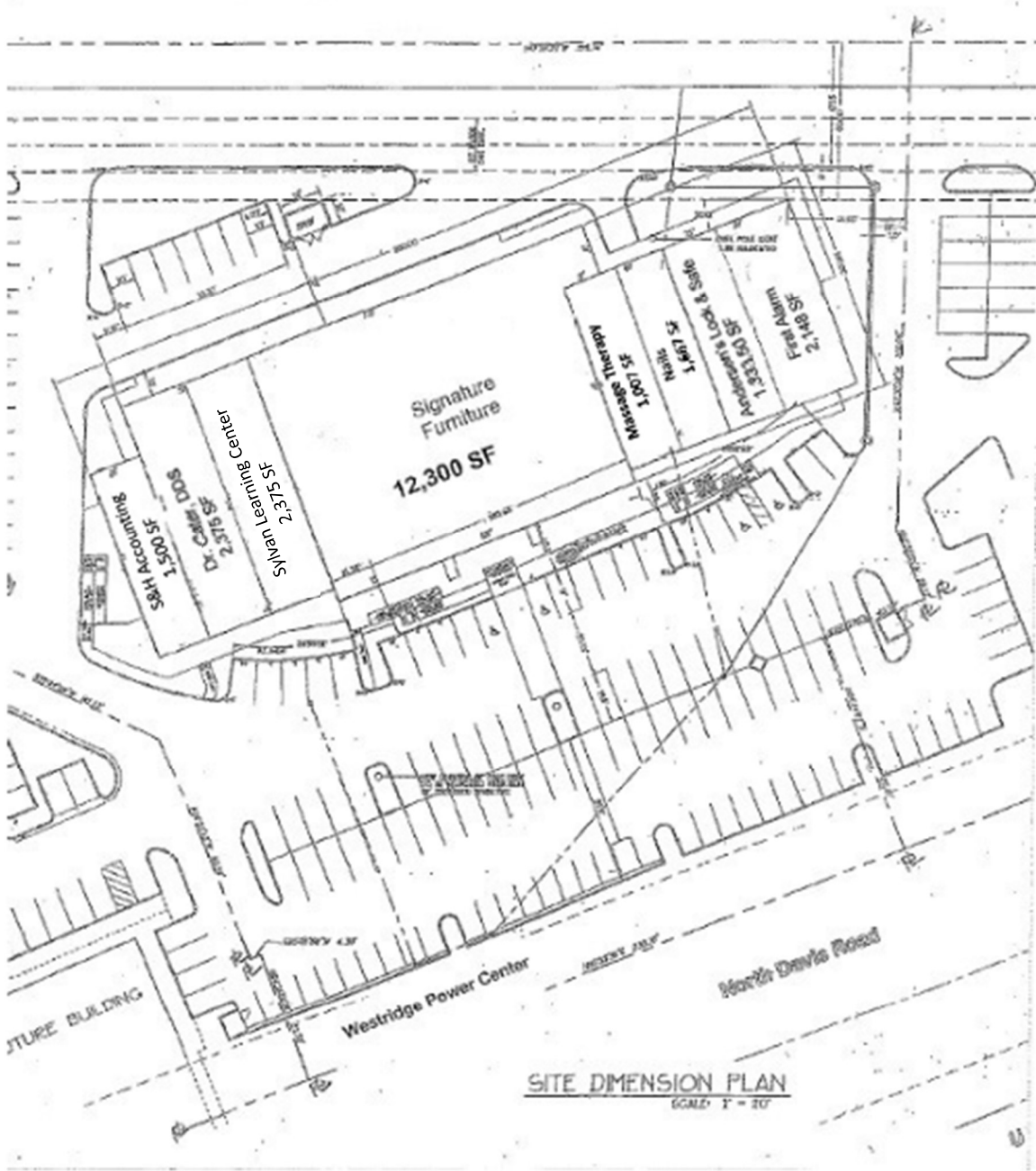
Costco, Office Max, Walmart, Ross, Dick's Sporting Goods,
Applebee's & Outback Steakhouse Restaurant

High Growth Area in Monterey County

	<u>5 Miles</u>	<u>10 Miles</u>	<u>15 Miles</u>
Population	161,274	229,491	319,561
Average Household Income	\$68,116	\$72,771	\$75,667
Median Household Income	\$55,449	\$58,467	\$59,373

Shaw Commercial
3 Quail Run Cir., Suite 103, Salinas, CA 93907

Tim (Beau) Oxsen • beau@shaw-development.com
Office 831-772-8100 x120 • Cell 831-262-8749
Broker License #01871028



SITE DIMENSION PLAN
 SCALE: 1" = 20'

Salinas Home Center
N. Davis Rd., Salinas, CA



Westridge Power Center N. Davis Rd., Salinas CA



West Salinas Shops

Salinas Home Center

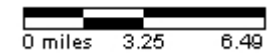
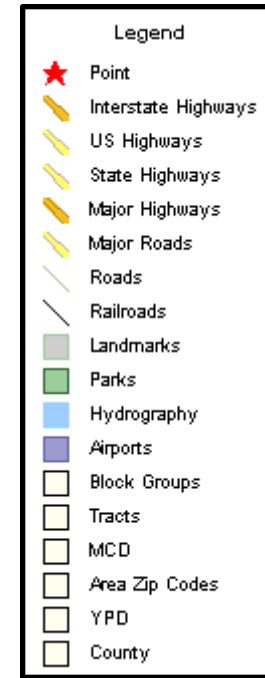
Auto Mall, Home Depot
Kohl's, Baby's R Us
BevMo, Panda Express



Area Map

N Davis Rd & W Laurel Dr, Salinas, CA

Coord: 36.697940, -121.668130
Radius - See Appendix for Details



Pop-Facts: Demographic Snapshot 2013 Report

N Davis Rd & W Laurel Dr, Salinas, CA

Radius 1: 36.697940/-121.668130, aggregate

Radius 2: 36.697940/-121.668130, aggregate

Radius 3: 36.697940/-121.668130, aggregate

Description	0.00 - 5.00 miles		0.00 - 10.00 miles		0.00 - 15.00 miles	
	Radius 1	%	Radius 2	%	Radius 3	%
Population						
2018 Projection	174,588		242,743		335,304	
2013 Estimate	164,396		229,213		318,283	
2010 Census	158,145		220,669		307,821	
2000 Census	157,266		222,573		311,031	
Growth 2013-2018	6.20%		5.90%		5.35%	
Growth 2010-2013	3.95%		3.87%		3.40%	
Growth 2000-2010	0.56%		-0.86%		-1.03%	
2013 Est. Pop by Single Race Class						
	164,396		229,213		318,283	
White Alone	74,596	45.38	112,262	48.98	167,593	52.66
Black or African American Alone	3,006	1.83	5,410	2.36	8,475	2.66
Amer. Indian and Alaska Native Alone	2,006	1.22	2,564	1.12	3,573	1.12
Asian Alone	9,952	6.05	16,611	7.25	22,480	7.06
Native Hawaiian and Other Pac. Isl. Alone	534	0.32	1,282	0.56	1,964	0.62
Some Other Race Alone	66,088	40.20	77,931	34.00	95,906	30.13
Two or More Races	8,214	5.00	13,153	5.74	18,292	5.75
2013 Est. Pop Hisp or Latino by Origin						
	164,396		229,213		318,283	
Not Hispanic or Latino	38,395	23.36	78,781	34.37	133,177	41.84
Hispanic or Latino:	126,001	76.64	150,432	65.63	185,106	58.16
Mexican	119,420	94.78	140,655	93.50	170,902	92.33
Puerto Rican	932	0.74	1,283	0.85	1,816	0.98
Cuban	108	0.09	171	0.11	204	0.11
All Other Hispanic or Latino	5,540	4.40	8,323	5.53	12,184	6.58
2013 Est. Hisp or Latino by Single Race Class						
	126,001		150,432		185,106	
White Alone	50,989	40.47	60,779	40.40	74,038	40.00
Black or African American Alone	727	0.58	946	0.63	1,229	0.66
American Indian and Alaska Native Alone	1,572	1.25	1,921	1.28	2,653	1.43
Asian Alone	856	0.68	1,130	0.75	1,366	0.74
Native Hawaiian and Other Pacific Islander Alone	98	0.08	154	0.10	190	0.10
Some Other Race Alone	65,875	52.28	77,610	51.59	95,463	51.57
Two or More Races	5,884	4.67	7,892	5.25	10,168	5.49