

Retail/Office for Lease

5350 Sheridan Blvd. Arvada, CO
Berkeley Village Center



- Brand New Construction
- Large Outdoor Patios
- 1,200-6,000 Sf for Tenant Build- Out
- High Exposure/Fronts Sheridan Blvd
- 3 Mile Population - 144,013
- Traffic Count - 39,286
- Restaurant Space Drive-Through
- Between I-76 and I-70

Realty Solutions

RITA TSALYUK

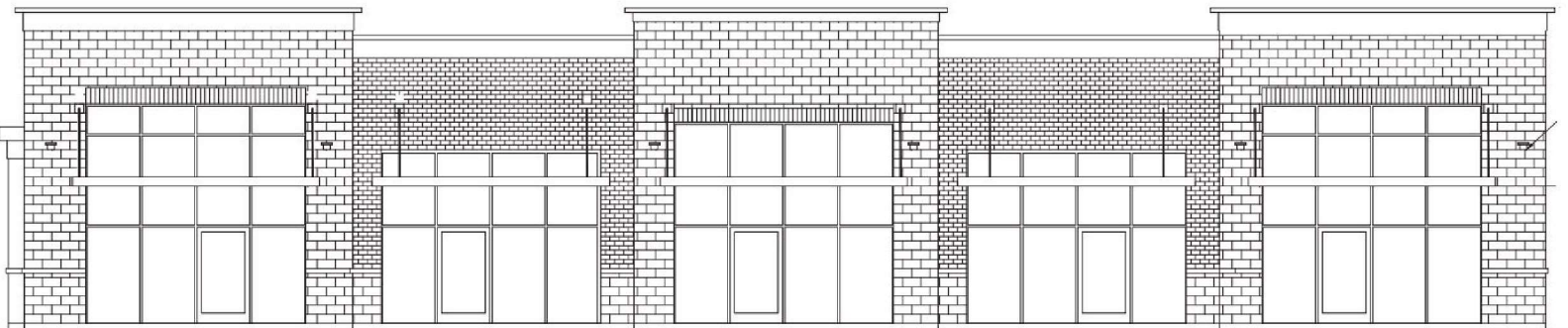
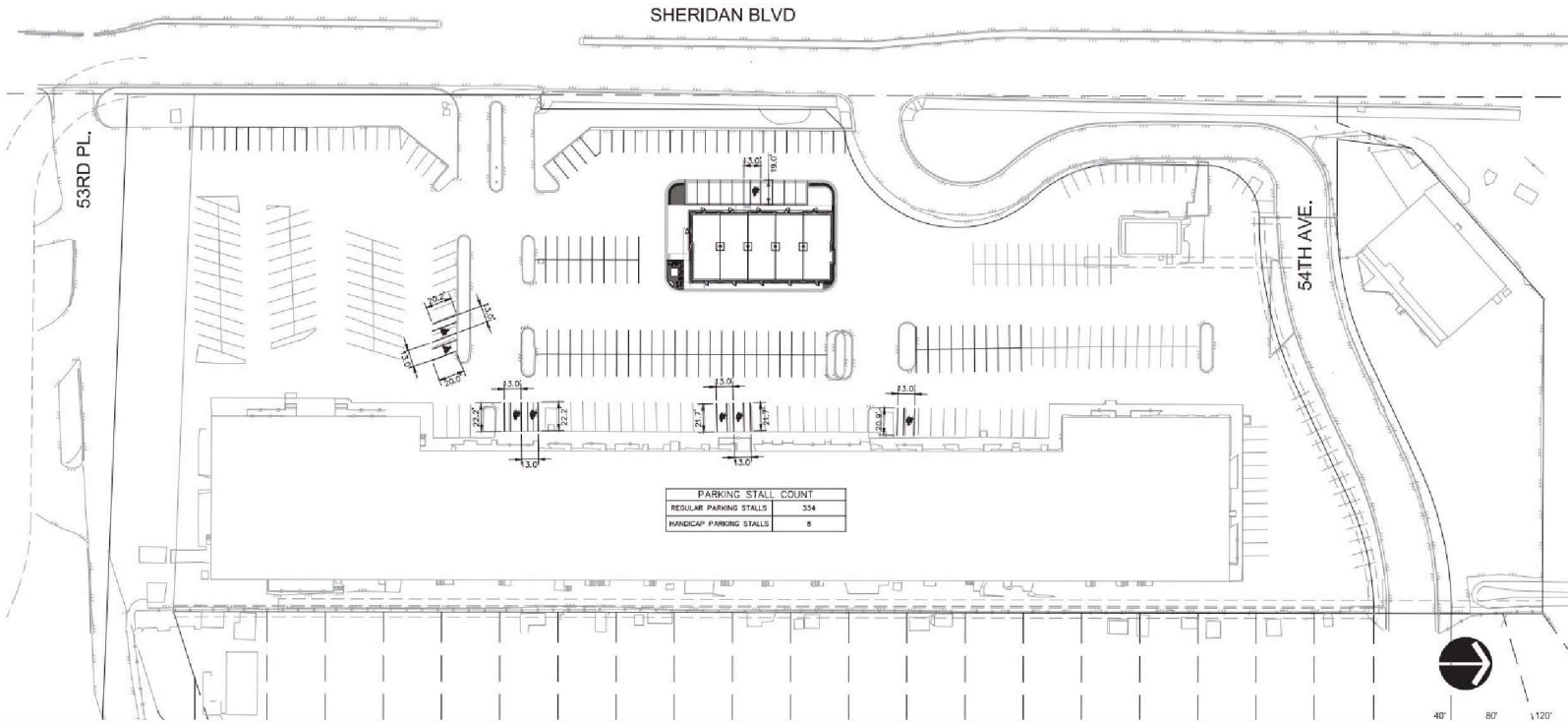
Broker

303.522.8633

berkeleyvillagecenter@gmail.com

5350 Sheridan Blvd. Arvada, CO

Berkeley Village Center



Realty Solutions

RITA TSALYUK

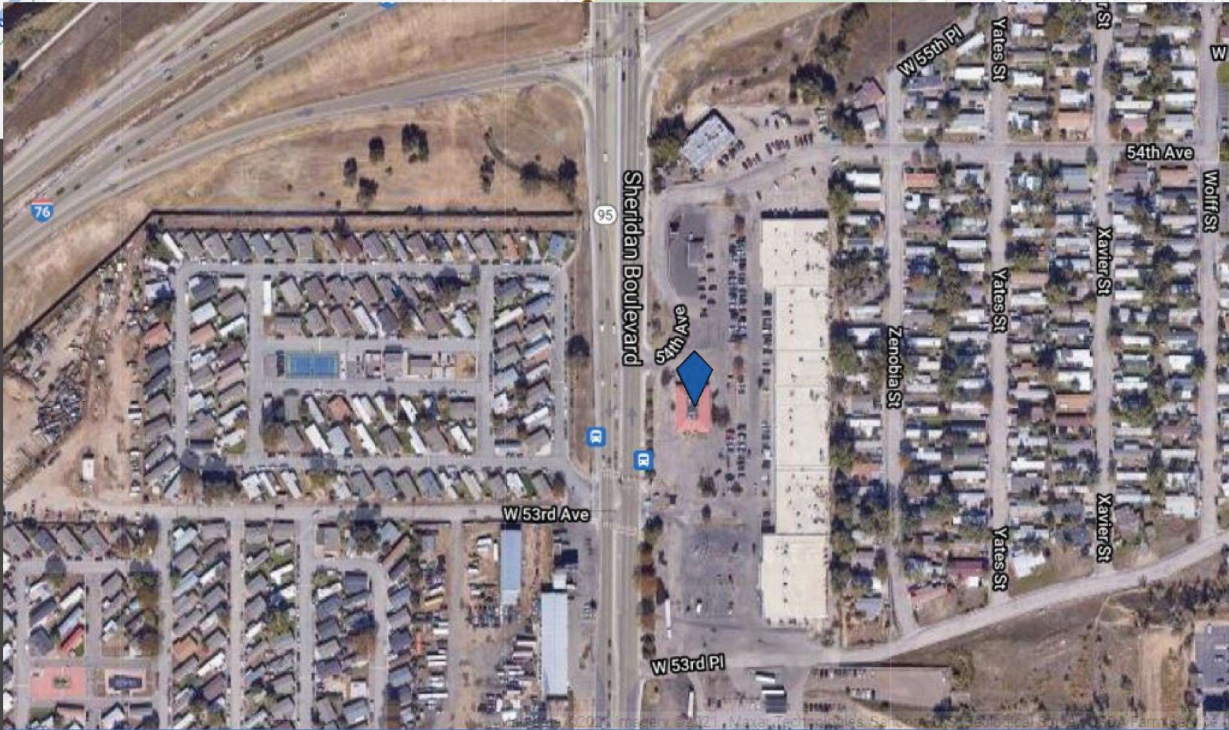
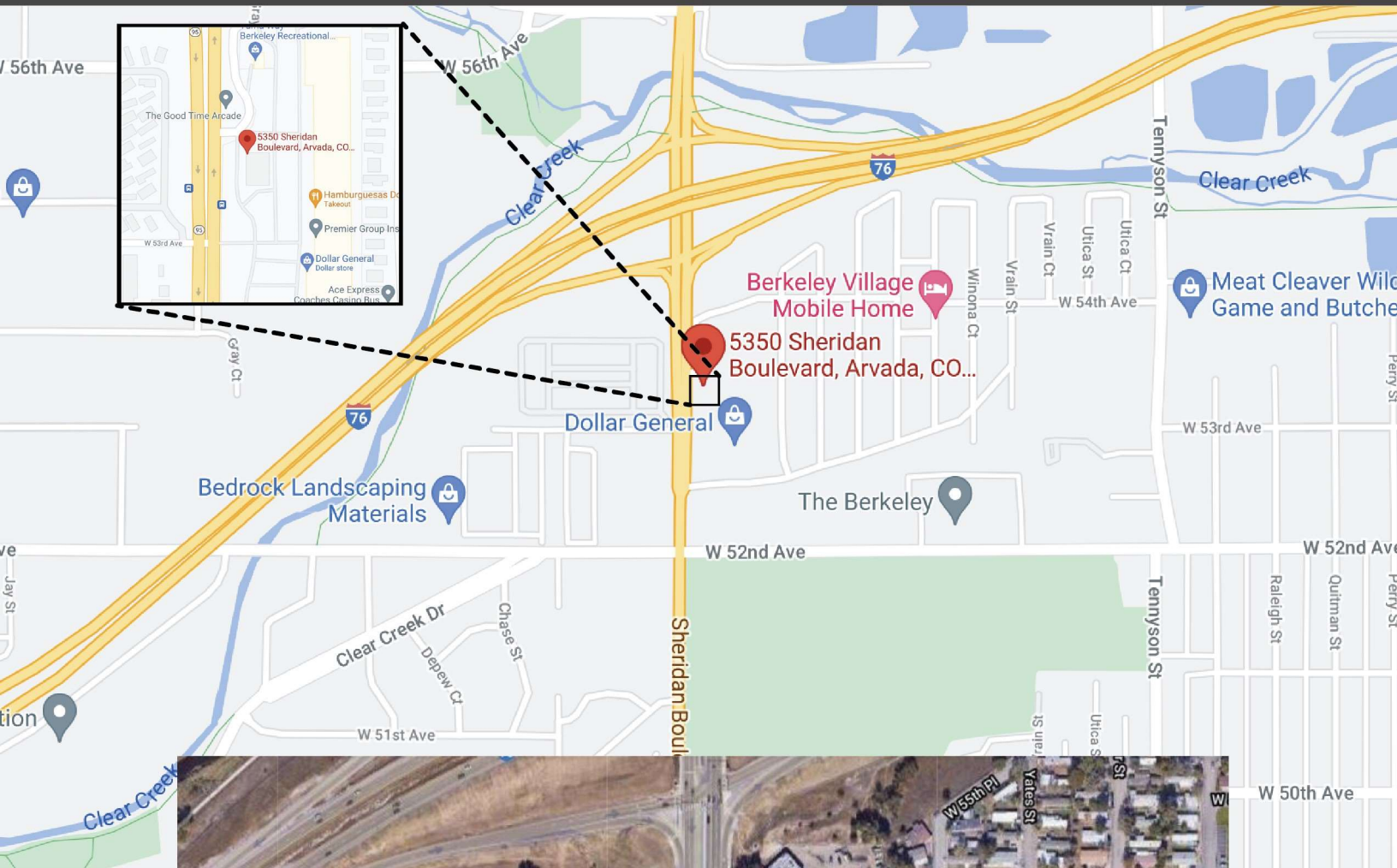
Broker

303.522.8633

berkeleyvillagecenter@gmail.com

1385 SOUTH COLORADO BLVD #712 | DENVER, CO 80222

Map/Location



RITA TSALYUK

Broker

303.522.8633

berkeleyvillagecenter@gmail.com

Realty Solutions

1385 SOUTH COLORADO BLVD #712 | DENVER, CO 80222