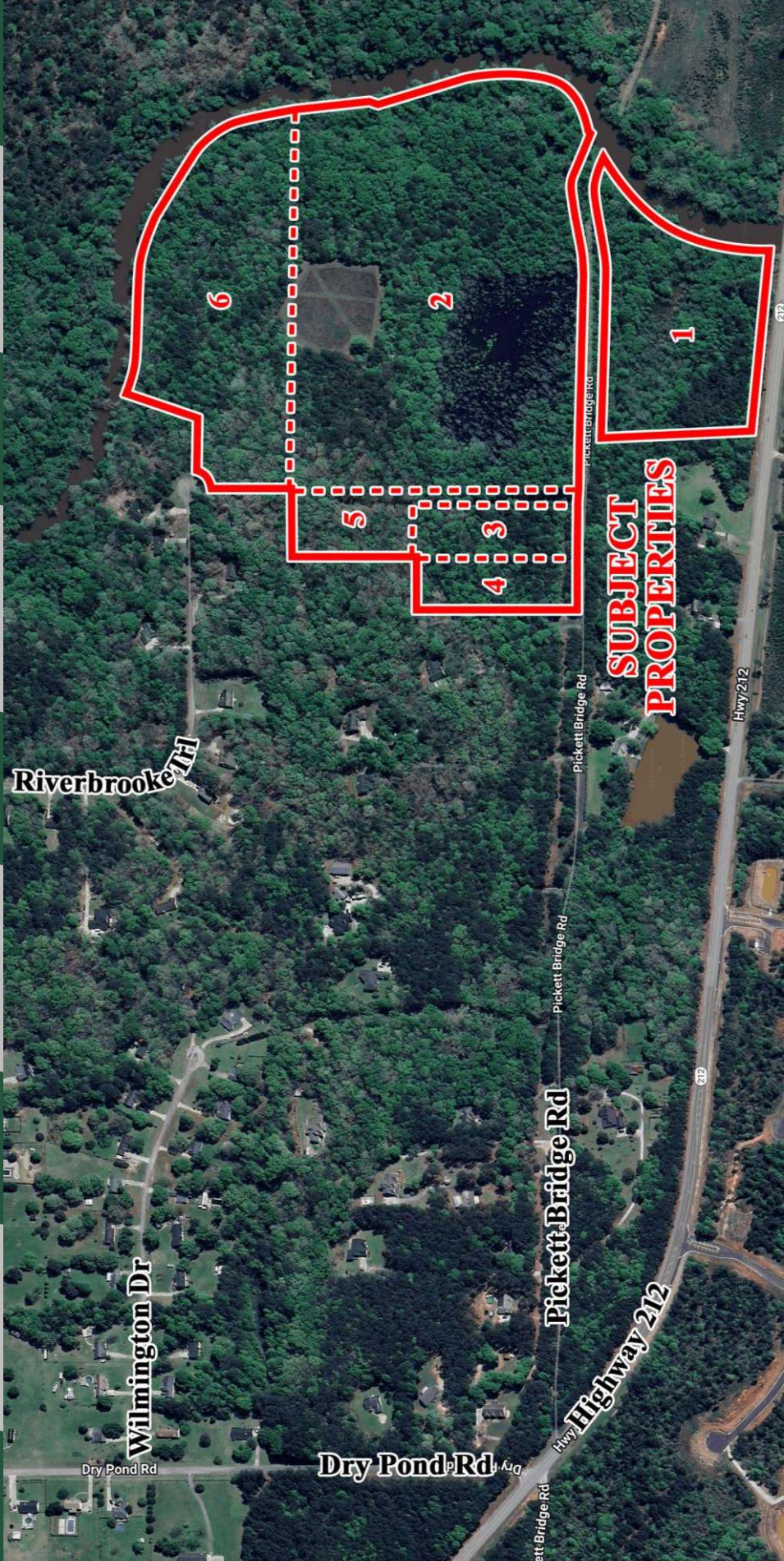



**FOR SALE: Multi-Lot Land off Highway 212 | 64.85± Acres**  
**Pickett Bridge Road, Dry Pond Road, Riverbrooke Trail**  
**Newton County, GA 30016**



- Summary
- Area Info
- Maps
- Agent Info



  
577 Mulberry St, Suite 1100  
Macon, GA 31201  
478.746.9421 Office  
<https://commercial.fickling.com>

**Jenny Howell, Commercial Sales & Leasing**  
478-746-9421 Office  
786-449-8523 Cell  
[jenny@fickling.com](mailto:jenny@fickling.com)

Licensed in Florida and Georgia  
Also fluent in Spanish and Portuguese

**CONTACT**

This information is from resources deemed to be reliable and is subject to change without notice. No warranties or guarantees for accuracy are made by Fickling and Company.

**FOR SALE: Multi-Lot Land off Highway 212 | 64.85± Acres**  
**Pickett Bridge Road, Dry Pond Road, Riverbrooke Trail**  
**Newton County, GA 30016**



Summary

Area Info

Maps

Agent Info

**PROPERTY INFORMATION**

**SITES**

**Sale Price:**

**All Lots - \$520,025.00**

**County:**

Newton

**Property**

Dry Pond Road – 0051000000017000

**Addresses,**

Pickett Bridge Road – 0051000000037000

**Parcel IDs:**

Pickett Bridge Road – 00510000000086000

Pickett Bridge Road – 00510000000087000

1221 Pickett Bridge Road – 00510000000088000

280 Riverbrooke Trail – 00510000000218000

**SITES**

**Site Sizes:**

Dry Pond Road – 34.31 AC

Pickett Bridge Road – 11.07 AC

Pickett Bridge Road – 2.3 AC

Pickett Bridge Road – 2.3 AC

1221 Pickett Bridge Road – 2.6 AC

280 Riverbrooke Trail – 12.27 AC

Total – 64.85 AC

**Zoning:**

A-R (Agricultural Residential)

**Utilities:**

All Available

**Taxes:**  
**(2024 Est.)**

Dry Pond Road – \$1,621.44

Pickett Bridge Road – \$1,376.59

Pickett Bridge Road – \$408.10

Pickett Bridge Road – \$408.10

1221 Pickett Bridge Road – \$353.36

280 Riverbrooke Trail – \$1,296.95

Total - \$5,464.54

**Demographics**  
**2025**

**Population**

18,353

**Avg HH Income**

\$104,594

**Median Age**

35.2

**10 Miles**

110,613

**15 Miles**

267,226

**CONTACT**

**Jenny Howell, Commercial Sales & Leasing**

478-746-9421 Office

786-449-8523 Cell

jenny@fickling.com

Licensed in Florida and Georgia

Also fluent in Spanish and Portuguese



577 Mulberry St, Suite 1100

Macon, GA 31201

478.746.9421 Office

<https://commercial.fickling.com>

This information is from resources deemed to be reliable and is subject to change without notice. No warranties or guarantees for accuracy are made by Fickling and Company.

**FOR SALE: Multi-Lot Land off Highway 212 | 64.85± Acres**  
**Pickett Bridge Road, Dry Pond Road, Riverbrooke Trail**  
**Newton County, GA 30016**



Summary

Area Info

Maps

Agent Info

**PROPERTY INFORMATION**

**PROPERTY DESCRIPTION**

Fickling & Company is proud to present an exceptional multi-lot land opportunity in Newton County, conveniently located just off Highway 212. This offering totals **64.85± acres**, with most parcels available for individual sale. Please refer to the price breakdown for details.

Located near **Pickett Bridge Plantation** and **Riverbrooke Plantation**, this Covington-area land is surrounded by a quiet, established community of estate homes on sizable tracts. Its location on the **Yellow River** offers scenic river frontage and enhances the land's recreational and ecological value. The landscape includes a mix of open fields, mature hardwoods, and freshwater wetlands - ideal for waterfowl habitat, privacy, and nature-based enjoyment.

**Key Features:**

- Conservation land with potential for mitigation or offset use
- Smaller parcels include **protective covenants** to maintain land integrity
- Peaceful, low-density surroundings with convenient access to Covington and surrounding growth corridors

**Ideal For:**

- **Homebuilders** seeking conservation acreage for mitigation purposes
- **Outdoor enthusiasts** looking for a private recreational retreat
- **Investors** interested in land banking or holding for future appreciation

**CONTACT**

**Jenny Howell, Commercial Sales & Leasing**

478-746-9421 Office  
 786-449-8523 Cell  
 jenny@fickling.com

Licensed in Florida and Georgia  
 Also fluent in Spanish and Portuguese



577 Mulberry St, Suite 1100  
 Macon, GA 31201  
 478.746.9421 Office  
<https://commercial.fickling.com>



Tract #	Acreage	Sale Price:
1	11.07	\$160,515.00
2	34.31	\$171,550.00
3	2.3	\$34,500.00
4	2.3	\$34,500.00
5	2.6	\$20,800.00
6	12.27	\$98,160.00
<b>Total:</b>	<b>64.85</b>	<b>\$520,025.00</b>

This information is from resources deemed to be reliable and is subject to change without notice. No warranties or guarantees for accuracy are made by Fickling and Company.

**FOR SALE: Multi-Lot Land off Highway 212 | 64.85± Acres**  
**Pickett Bridge Road, Dry Pond Road, Riverbrooke Trail**  
**Newton County, GA 30016**

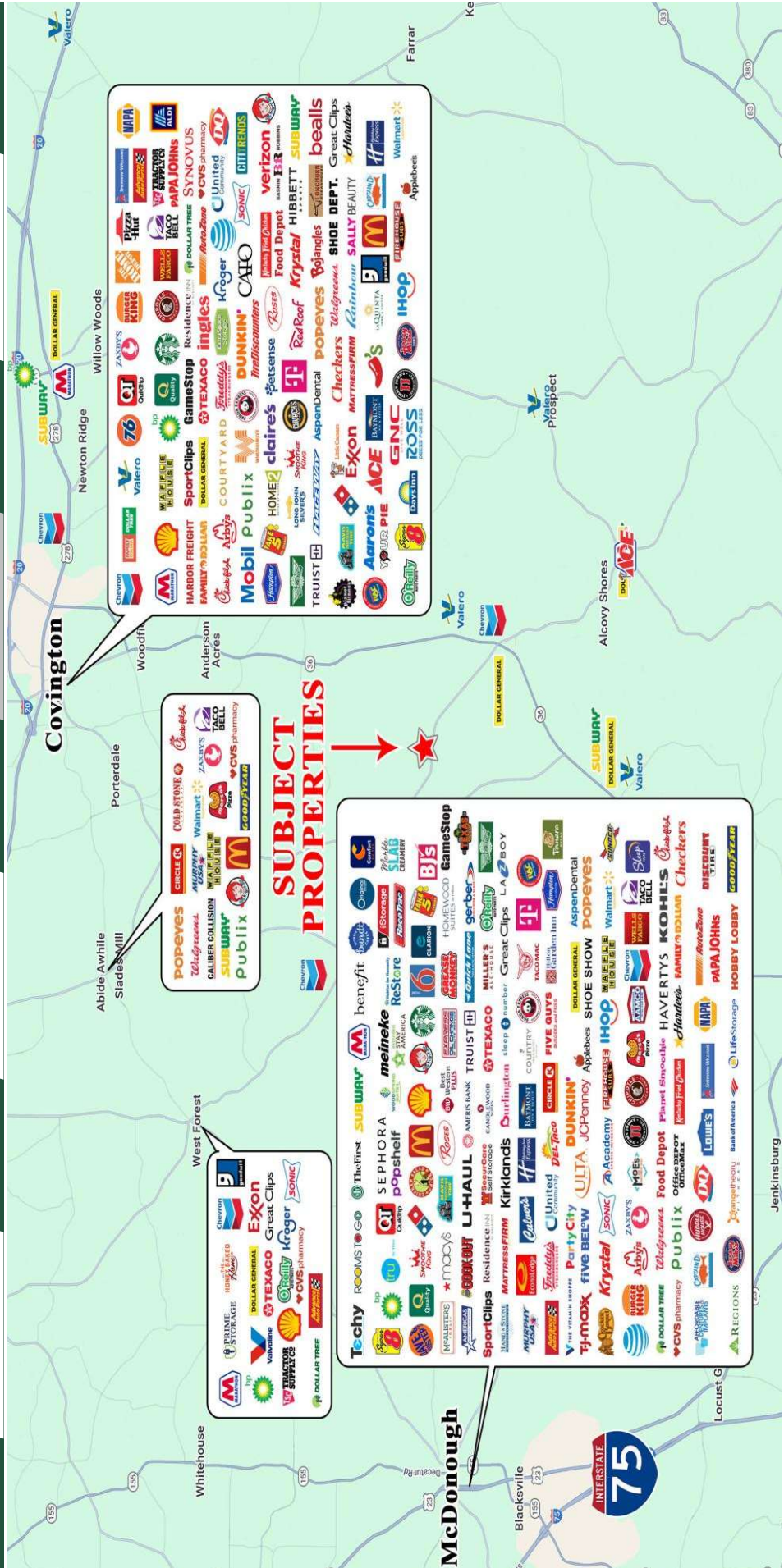


Summary

Area Info

Maps

Agent Info



**CONTACT**  
 Jenny Howell, Commercial Sales & Leasing  
 478-746-9421 Office  
 786-449-8523 Cell  
 jenny@fickling.com

Licensed in Florida and Georgia  
 Also fluent in Spanish and Portuguese

577 Mulberry St, Suite 1100  
 Macon, GA 31201  
 478.746.9421 Office  
<https://commercial.fickling.com>



This information is from resources deemed to be reliable and is subject to change without notice. No warranties or guarantees are made by Fickling and Company.

**FOR SALE: Multi-Lot Land off Highway 212 | 64.85± Acres**  
**Pickett Bridge Road, Dry Pond Road, Riverbrooke Trail**  
**Newton County, GA 30016**



Summary

Area Info

Maps

Agent Info

**WATER MAP**



**Jenny Howell, Commercial Sales & Leasing**  
 478-746-9421 Office  
 786-449-8523 Cell  
 jenny@fickling.com

**CONTACT**

577 Mulberry St, Suite 1100  
 Macon, GA 31201  
 478.746.9421 Office  
<https://commercial.fickling.com>



Licensed in Florida and Georgia  
 Also fluent in Spanish and Portuguese

This information is from resources deemed to be reliable and is subject to change without notice. No warranties or guarantees for accuracy are made by Fickling and Company.

**FOR SALE: Multi-Lot Land off Highway 212 | 64.85± Acres**  
**Pickett Bridge Road, Dry Pond Road, Riverbrooke Trail**  
**Newton County, GA 30016**



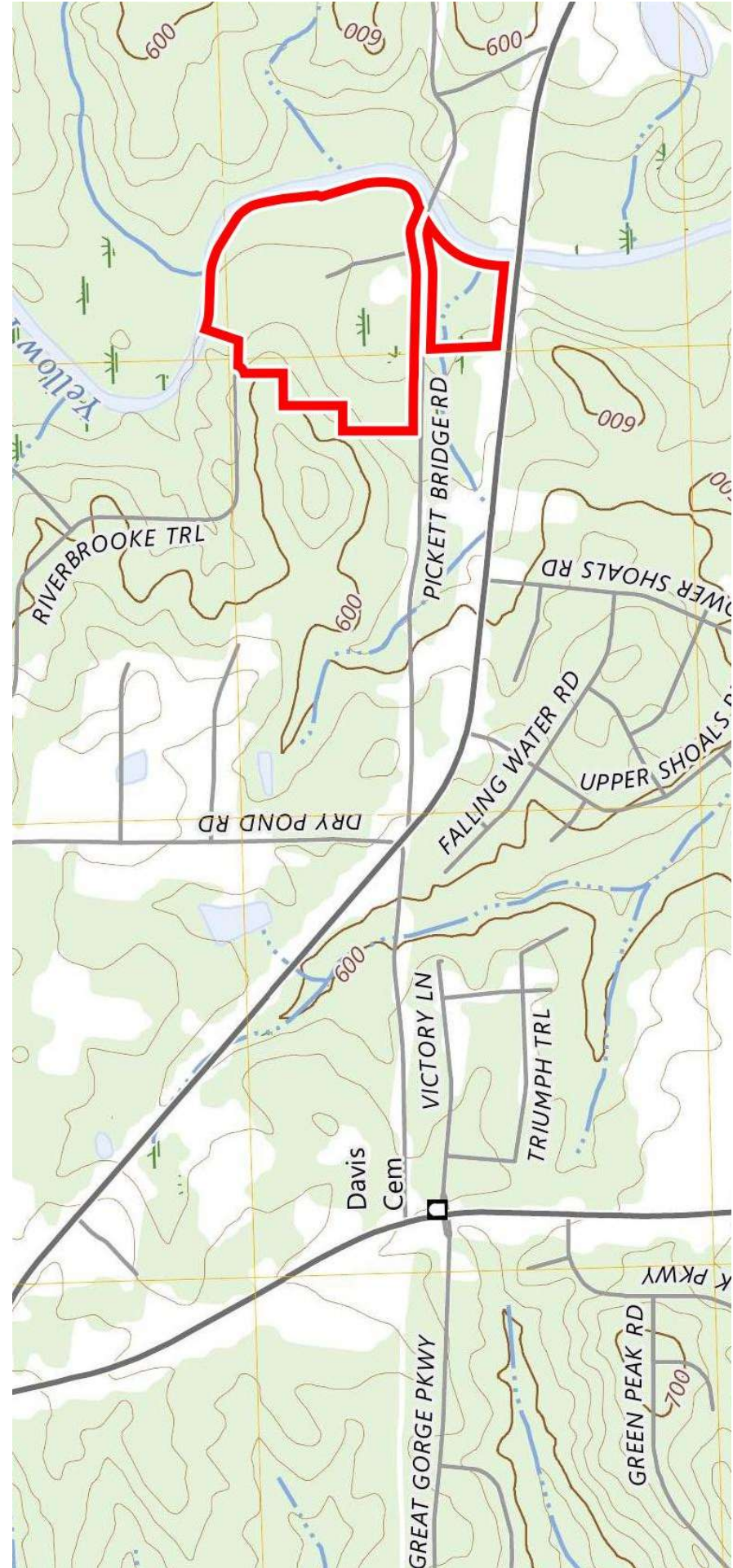
Summary

Area Info


Maps

Agent Info

### TOPOGRAPHY



**Jenny Howell, Commercial Sales & Leasing**  
478-746-9421 Office  
786-449-8523 Cell  
jenny@fickling.com

  
577 Mulberry St, Suite 1100  
Macon, GA 31201  
478.746.9421 Office  
<https://commercial.fickling.com>

**CONTACT**  
Licensed in Florida and Georgia  
Also fluent in Spanish and Portuguese

This information is from resources deemed to be reliable and is subject to change without notice. No warranties or guarantees for accuracy are made by Fickling and Company.

**FOR SALE: Multi-Lot Land off Highway 212 | 64.85± Acres**  
**Pickett Bridge Road, Dry Pond Road, Riverbrooke Trail**  
**Newton County, GA 30016**



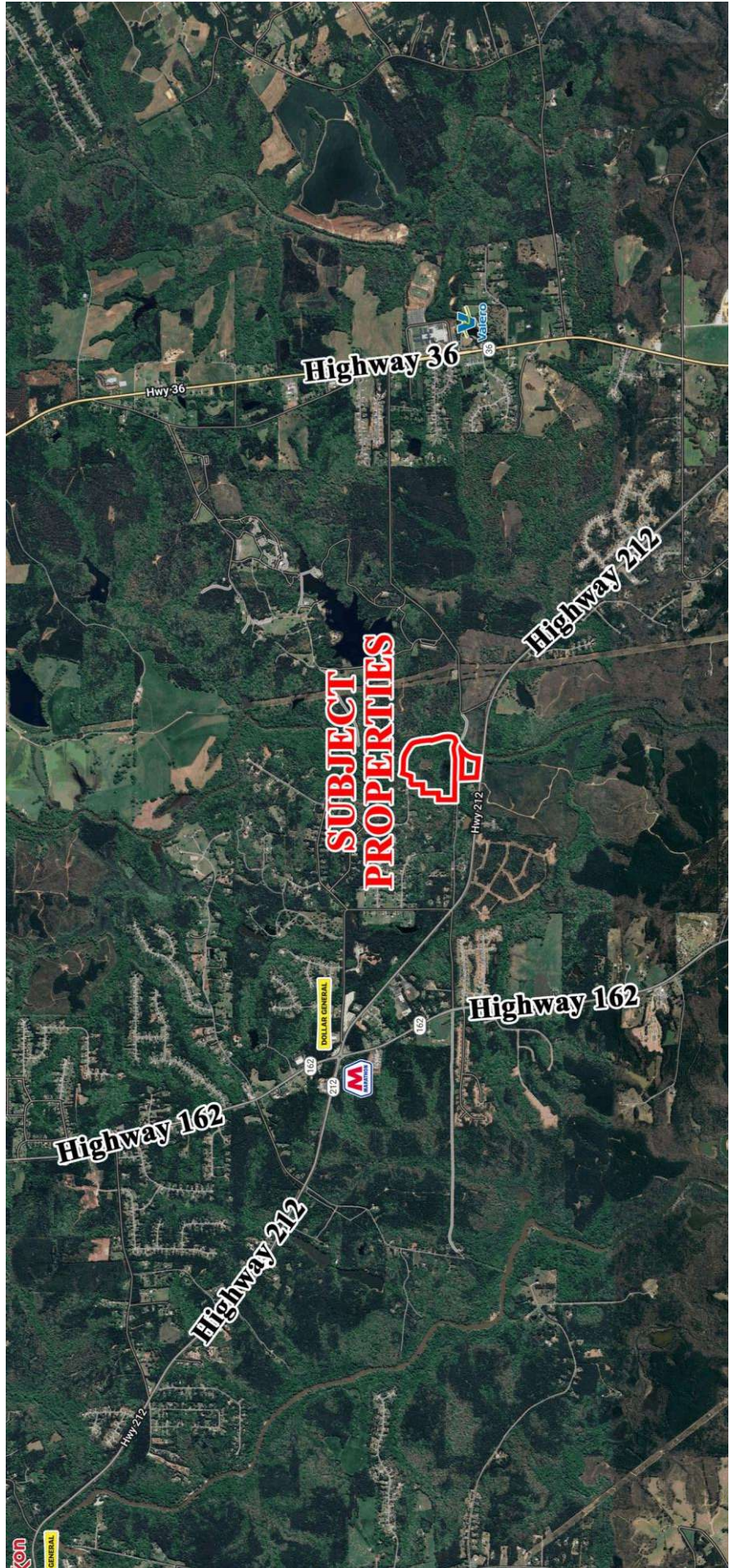
Summary

Area Info

Maps

Agent Info

**AERIAL**



**Jenny Howell, Commercial Sales & Leasing**  
478-746-9421 Office  
786-449-8523 Cell  
jenny@fickling.com

577 Mulberry St, Suite 1100  
Macon, GA 31201  
478.746.9421 Office  
<https://commercial.fickling.com>



**CONTACT**

Licensed in Florida and Georgia  
Also fluent in Spanish and Portuguese

This information is from resources deemed to be reliable and is subject to change without notice. No warranties or guarantees for accuracy are made by Fickling and Company.

**FOR SALE: Multi-Lot Land off Highway 212 | 64.85± Acres**  
**Pickett Bridge Road, Dry Pond Road, Riverbrooke Trail**  
**Newton County, GA 30016**



Summary

Area Info

Maps

Agent Info

## AGENT INFORMATION



Fickling & Company, Inc. has been setting the standards for Real Estate Services in southeastern secondary markets since its founding in 1939 as Fickling & Walker, Inc. [Fickling & Company, Inc.](#) is a full-service real estate and development firm headquartered in Macon, GA.

Fickling & Company provides professional commercial real estate consulting to both buyers and sellers, commercial property sales, and commercial property leasing and property management - all under one roof. The Company's heritage includes the development of more than one hundred subdivisions and apartment communities in Middle Georgia, as well as, the countless commercial developments throughout the Southeast.

Our licensed Commercial Sales and Leasing Agents are the experts in this industry and combined have over 100 years' experience in the commercial real estate business.

### Presented by: **Jenny Howell**

Licensed in Florida and Georgia  
Fluent in English, Spanish & Portuguese



Jenny brings over 20 years of experience in Sales & Marketing Strategy, including 17 years in Luxury Hospitality, where she led a Sales Team in a Resort that generated \$400+ Million Dollar annually.

A skillful negotiator and outstanding customer relations expert, Jenny became a multi-million-dollar producer within a few months of relocating to Georgia from Miami Beach. Her database includes over 2,500+ key business drivers and entrepreneurs from around the world.

Committed to delivering the highest level of expertise, Jenny is currently seeking the CCIM designation. Certified Commercial Investment Members (CCIM's) are the most advanced investment specialists anywhere.

### **Jenny Howell, Commercial Sales & Leasing**

478-746-9421 Office  
786-449-8523 Cell  
[jenny@fickling.com](mailto:jenny@fickling.com)



577 Mulberry St, Suite 1100  
Macon, GA 31201  
478.746.9421 Office  
<https://commercial.fickling.com>

## CONTACT

This information is from resources deemed to be reliable and is subject to change without notice. No warranties or guarantees for accuracy are made by Fickling and Company.