



Keegan & Coppin
COMPANY, INC.

FOR LEASE

4222 PETALUMA BLVD N.
PETALUMA, CA

SMALL WAREHOUSE UNIT



Go beyond broker.

REPRESENTED BY:

DEMI BASILIADES, SREA
LIC # 02080190 (707) 664-1400, EXT 305
DBASILIADES@KEEGANCOPPIN.COM

MIKE FLITNER, PARTNER
LIC # 00840890 (707) 528-1400, EXT 239
MFLITNER@KEEGANCOPPIN.COM



PROPERTY INFORMATION



4222 PETALUMA BLVD N
PETALUMA, CA

**SMALL WAREHOUSE
UNIT**

PROPERTY DESCRIPTION

Property has new paint, freshly-paved driveways and is cleanly kept with property management.

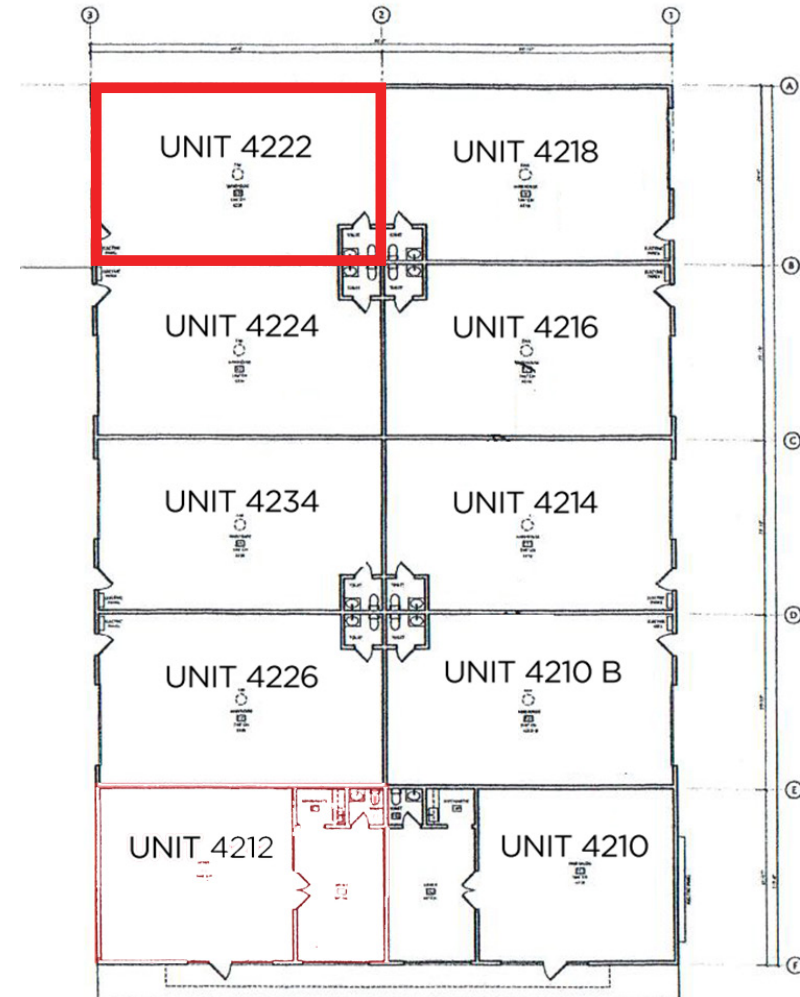
AVAILABLE SPACE

AVAILABILITIES

**4222 PETALUMA
BLVD N.** 1,000+/- sq ft

DESCRIPTION

- Clean warehouse unit.
- Bathroom and Small Office
- \$1,400/month including CAM
- New Paint and Insulation





4222 PETALUMA BLVD N. PHOTOS



4222 PETALUMA BLVD N
PETALUMA, CA

SMALL WAREHOUSE
UNIT



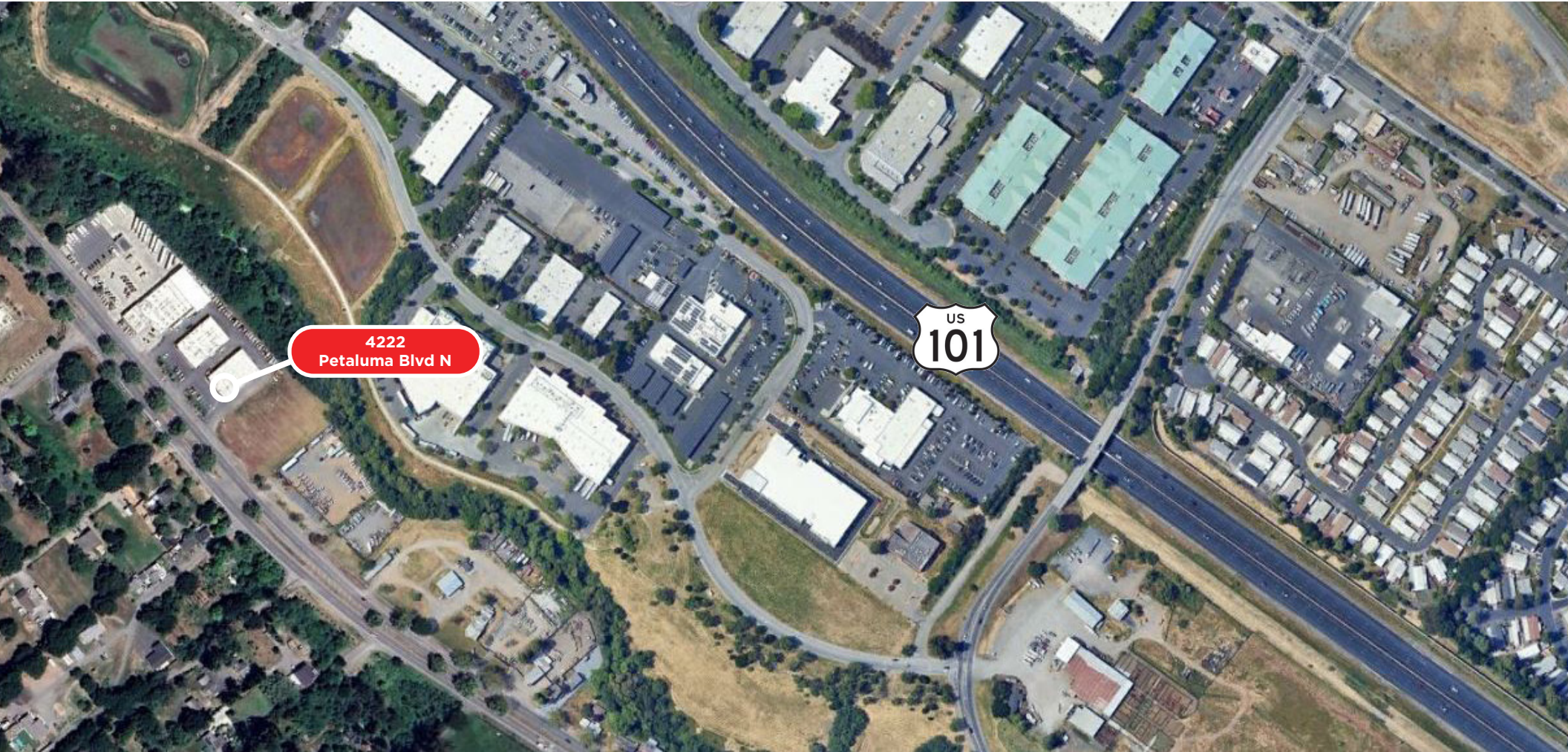


AERIAL MAP



4222 PETALUMA BLVD N
PETALUMA, CA

**SMALL WAREHOUSE
UNIT**



Keegan & Coppin Co., Inc.
1201 North McDowell Avenue
Petaluma, CA 94954
www.keegancoppin.com
(707) 664-1400

The above information, while not guaranteed, has been secured from sources we believe to be reliable. Submitted subject to error, change or withdrawal. An interested party should verify the status of the property and the information herein.

REPRESENTED BY:

DEMI BASILIADES, SREA
LIC # 02080190 (707) 664-1400, EXT 305
DBASILIADES@KEEGANCOPPIN.COM

MIKE FLITNER, PARTNER
LIC # 00840890 (707) 528-1400, EXT 239
MFLITNER@KEEGANCOPPIN.COM