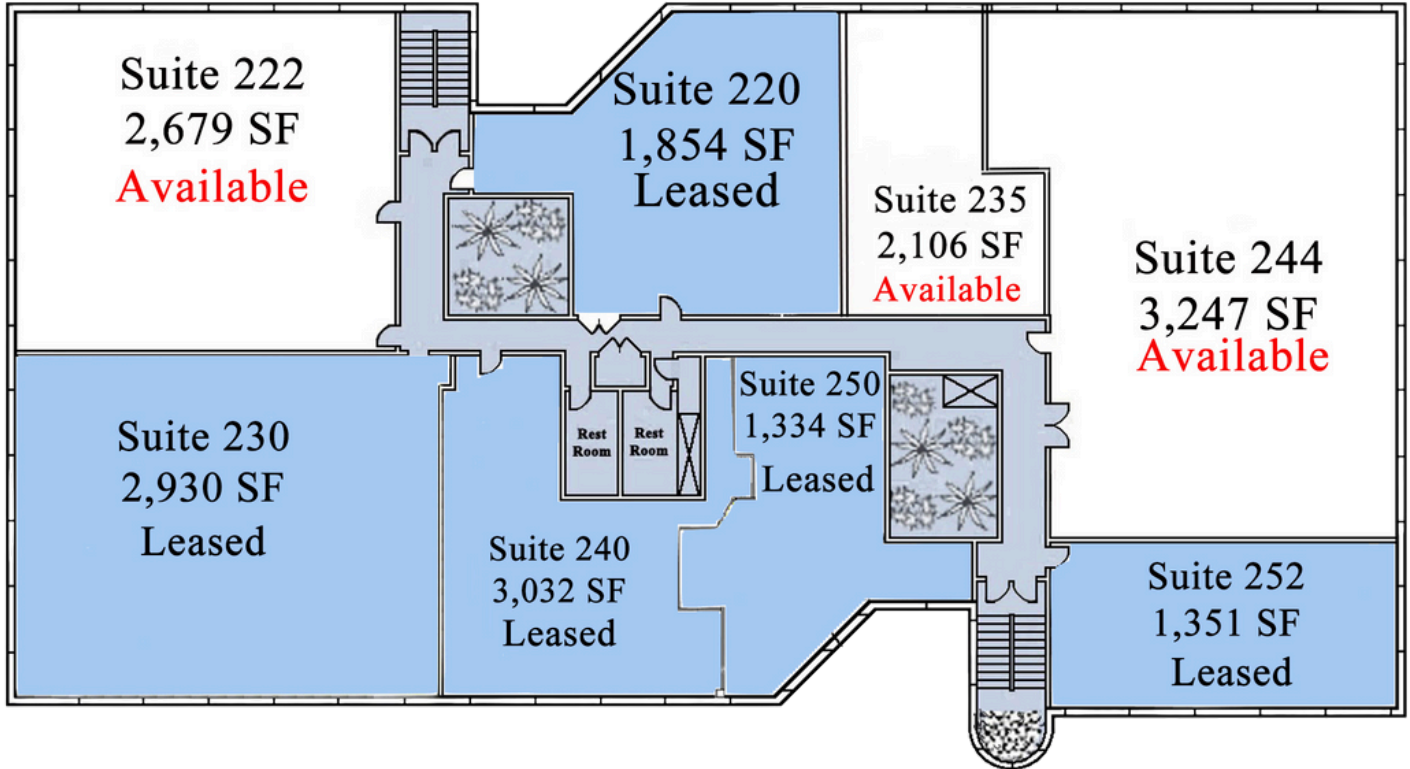


655 BUILDING *2nd Floor*



- \$18 PSF/ FULL SERVICE OFFICE SPACE
- MONUMENT SIGNAGE
- CHARTER & AT&T FIBER
- AMPLE FREE PARKING

Conveniently located in Creve Coeur, this beautiful three-story brick building is centrally placed in an attractive tree-lined setting. 655 Craig offers unmatched convenience with proximity to many restaurants, banks, shopping centers, medical facilities, and hotels.



SHARON BOTKIN
sbotkin@scottproperties.com

