

# 54

## NOLL STREET BUSHWICK, BROOKLYN

Between Evergreen Avenue &  
Stanwix Street

MEDICAL FOR LEASE



### APPROXIMATE SIZE

Lower Level: 35,040 SF

### ASKING RENT

\$35 PSF

### POSSESSION

Immediate

### TERM

Negotiable

### CEILING HEIGHT

12' 8"

### COMMENTS

- At the base of The Denizen, a 911-unit luxury residential building
- Institutional ownership group
- Anchored by brand-new 14,000 SF gourmet market
- Parking garage available
- Landlord willing to contribute to build-out
- All uses considered
- TI available

### NEIGHBORS

Foodtown • Sweet Anelle • Trillfit • Lovebirds •  
Keybar • Drip Coffee • The Little Whiskey • Yours  
Sincerely • Loncheria • Dayglow • Star Deli & Grill

### TRANSPORTATION



### STEPHEN LIGAMBI

Senior Associate  
212.468.5985  
sligambi@meridiancapital.com

### ASHLYN LORENTZ

Associate  
212.468.5954  
alorentz@meridiancapital.com

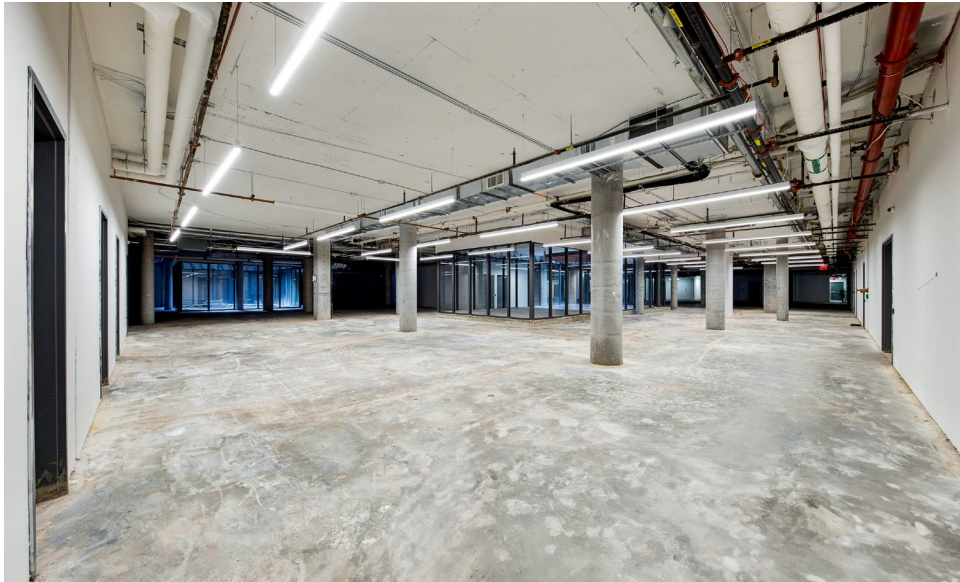
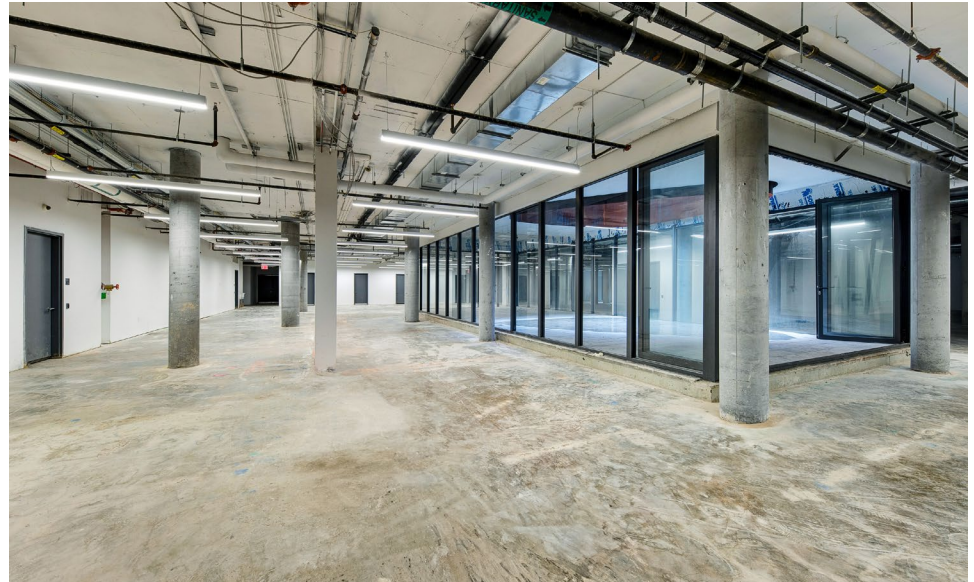
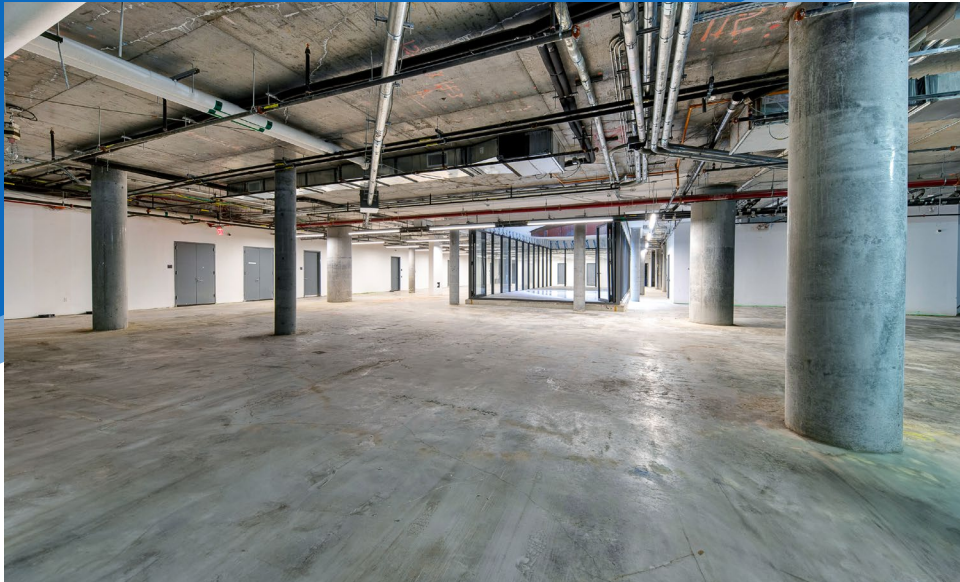


All information supplied is from sources deemed reliable and is furnished subject to errors, omissions, modifications, removal of the listing from sale or lease, and to any listing conditions, including the rates and manner of payment of commissions for particular offerings imposed by Meridian Capital Group. This information may include estimates and projections prepared by Meridian Capital Group with respect to future events, and these future events may or may not actually occur. Such estimates and projections reflect various assumptions concerning anticipated results. While Meridian Capital Group believes these assumptions are reasonable, there can be no assurance that any of these estimates and projections will be correct. Therefore, actual results may vary materially from these estimates and projections. Any square footage dimensions set forth are approximate.

# 54 NOLL STREET

BUSHWICK, BROOKLYN | Between Evergreen Avenue and Stanwix Street

MEDICAL FOR LEASE



INTERIOR

## STEPHEN LIGAMBI

Senior Associate  
212.468.5985  
sligambi@meridiancapital.com

## ASHLYN LORENTZ

Associate  
212.468.5954  
alorentz@meridiancapital.com



All information supplied is from sources deemed reliable and is furnished subject to errors, omissions, modifications, removal of the listing from sale or lease, and to any listing conditions, including the rates and manner of payment of commissions for particular offerings imposed by Meridian Capital Group. This information may include estimates and projections prepared by Meridian Capital Group with respect to future events, and these future events may or may not actually occur. Such estimates and projections reflect various assumptions concerning anticipated results. While Meridian Capital Group believes these assumptions are reasonable, there can be no assurance that any of these estimates and projections will be correct. Therefore, actual results may vary materially from these estimates and projections. Any square footage dimensions set forth are approximate.

# 54 NOLL STREET

BUSHWICK, BROOKLYN | Between Evergreen Avenue and Stanwix Street

MEDICAL FOR LEASE

## NOLL STREET

FLOOR PLAN | TEST FIT



EVERGREEN AVENUE

**STEPHEN LIGAMBI**  
Senior Associate  
212.468.5985  
sligambi@meridiancapital.com

**ASHLYN LORENTZ**  
Associate  
212.468.5954  
alorentz@meridiancapital.com



All information supplied is from sources deemed reliable and is furnished subject to errors, omissions, modifications, removal of the listing from sale or lease, and to any listing conditions, including the rates and manner of payment of commissions for particular offerings imposed by Meridian Capital Group. This information may include estimates and projections prepared by Meridian Capital Group with respect to future events, and these future events may or may not actually occur. Such estimates and projections reflect various assumptions concerning anticipated results. While Meridian Capital Group believes these assumptions are reasonable, there can be no assurance that any of these estimates and projections will be correct. Therefore, actual results may vary materially from these estimates and projections. Any square footage dimensions set forth are approximate.

# 54 NOLL STREET

BUSHWICK, BROOKLYN | Between Evergreen Avenue and Stanwix Street

MEDICAL FOR LEASE

NEIGHBORS



**STEPHEN LIGAMBI**  
Senior Associate  
212.468.5985  
sligambi@meridiancapital.com

**ASHLYN LORENTZ**  
Associate  
212.468.5954  
alorentz@meridiancapital.com



All information supplied is from sources deemed reliable and is furnished subject to errors, omissions, modifications, removal of the listing from sale or lease, and to any listing conditions, including the rates and manner of payment of commissions for particular offerings imposed by Meridian Capital Group. This information may include estimates and projections prepared by Meridian Capital Group with respect to future events, and these future events may or may not actually occur. Such estimates and projections reflect various assumptions concerning anticipated results. While Meridian Capital Group believes these assumptions are reasonable, there can be no assurance that any of these estimates and projections will be correct. Therefore, actual results may vary materially from these estimates and projections. Any square footage dimensions set forth are approximate.