



**Blumentals
Architecture**

1600 Marshall Street NE, Suite 1
Minneapolis, MN 55413
612/331-2222
info@blumentals.com

**PRELIMINARY
DRAWINGS**
• NOT FOR CONSTRUCTION

ISSUES / REVISIONS

EXISTING CONDITIONS

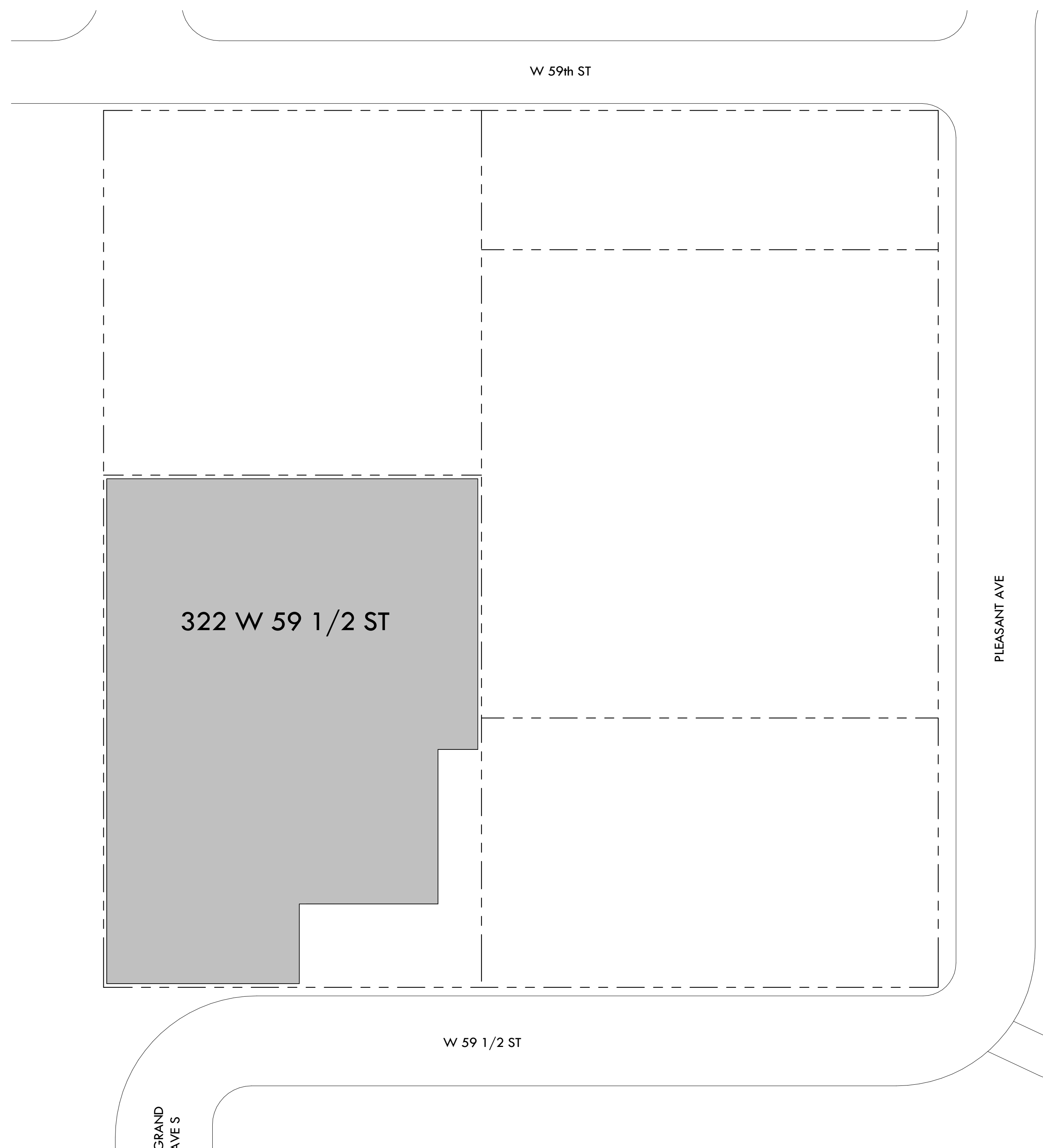
VERIFY ALL EXISTING CONSTRUCTION DIMENSIONS, ELEVATIONS AND CONDITIONS BEFORE STARTING ANY CONSTRUCTION. REVIEW ANY DISCREPANCIES WITH THE ARCHITECT. ADJUST NEW CONSTRUCTION AS REQUIRED.

322 W 59 1/2 ST - AS-BUILT

322 W 59 1/2 St,
Minneapolis, MN 55419

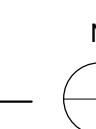
B/A Project Number: **624-17**
SITE PLAN

A101



2 SITE PLAN - IMAGE
1" = 30'-0"

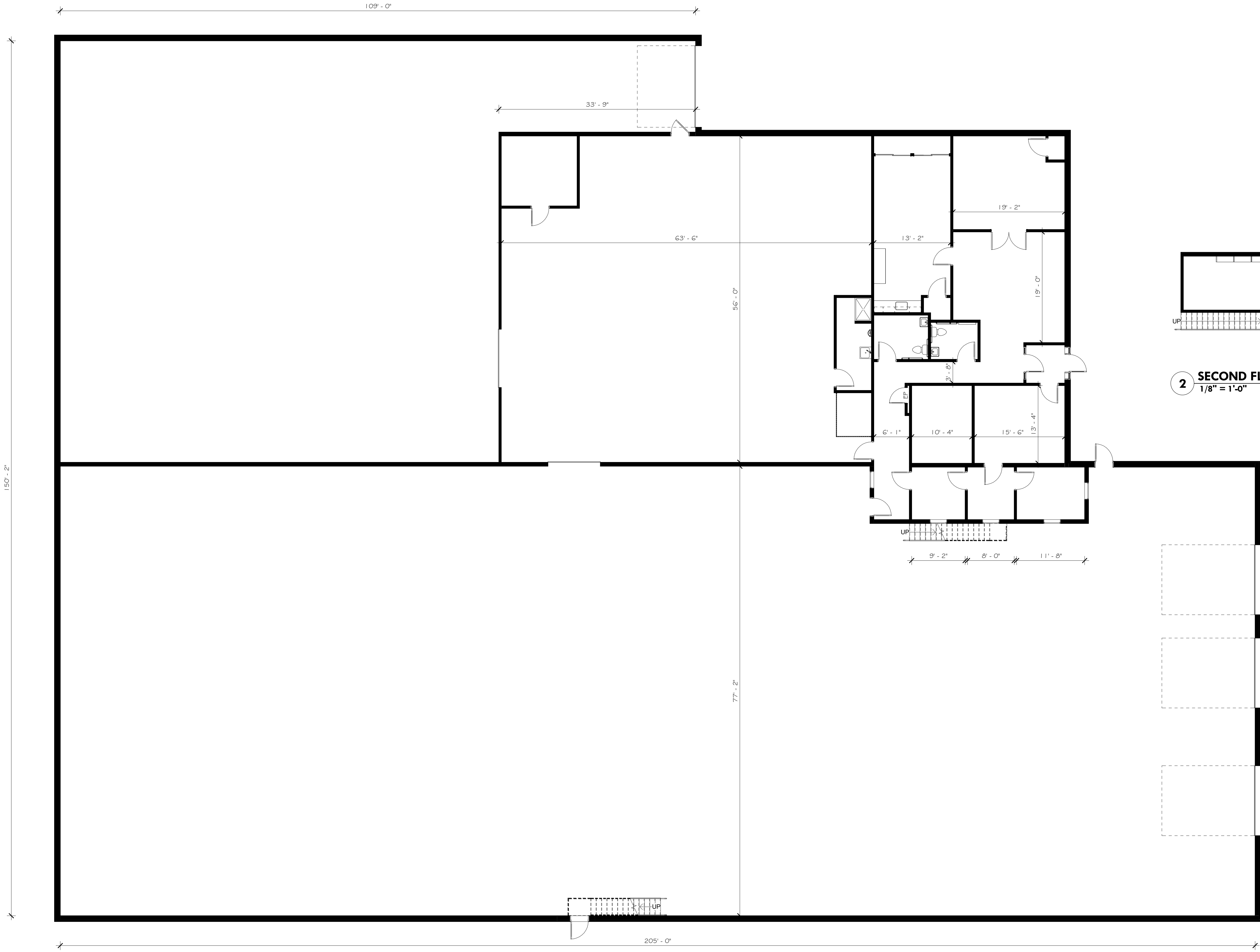
1 SITE PLAN
1" = 30'-0"





**Blumentals
Architecture**

1600 Marshall Street NE, Suite 1
Minneapolis, MN 55413
612/331-2222
info@blumentals.com



2 SECOND FLOOR
1/8" = 1'-0"

1 FIRST FLOOR
1/8" = 1'-0"

**PRELIMINARY
DRAWINGS**
• NOT FOR CONSTRUCTION

ISSUES / REVISIONS

| NO. | DATE | DESCRIPTION |
|-----|------|-------------|
|-----|------|-------------|

EXISTING CONDITIONS

VERIFY ALL EXISTING CONSTRUCTION DIMENSIONS, ELEVATIONS AND CONDITIONS BEFORE STARTING ANY CONSTRUCTION. REVIEW ANY DISCREPANCIES WITH THE ARCHITECT. ADJUST NEW CONSTRUCTION AS REQUIRED.

322 W 59 1/2 St - AS-BUILT

322 W 59 1/2 St,
Minneapolis, MN 55419

B/A Project Number: **624-17**
FLOOR PLAN

A201

6/28/2024 2:09:04 PM

