

18881 SHERWOOD STREET  
DETROIT, MICHIGAN

INDUSTRIAL FOR SALE  
52,291 Square Feet Available



**SIGNATURE  
ASSOCIATES**  
KNOW SIGNATURE | KNOW RESULTS



## PROPERTY FEATURES

- 52,291 total square feet available
  - (2) buildings – 45,000 sq. ft. and 7,291 sq. ft.
- 20' clear height
- (4) grade level doors
- Heavy power
- (8) Cranes: (1) 2-Ton 47'-4-5/8" Span, (1) 5-Ton 47'-4-5/8" Span, (1) 10-Ton 47'-4-5/8" Span, (1) 10-Ton 57'-4" Span, (2) 10-Ton 51'-0" Span, (2) 20-Ton 57'-4" Span
- Rail adjacent to property
- 35 parking spaces
- Can also be purchased as part of a portfolio totaling 133,241 sq. ft. and 11.988 acres
- Sale Price: \$2,400,000 (\$45.90/sq. ft.)



For more information, please contact:

**STEVE GORDON**  
(248) 948 0101  
sgordon@signatureassociates.com

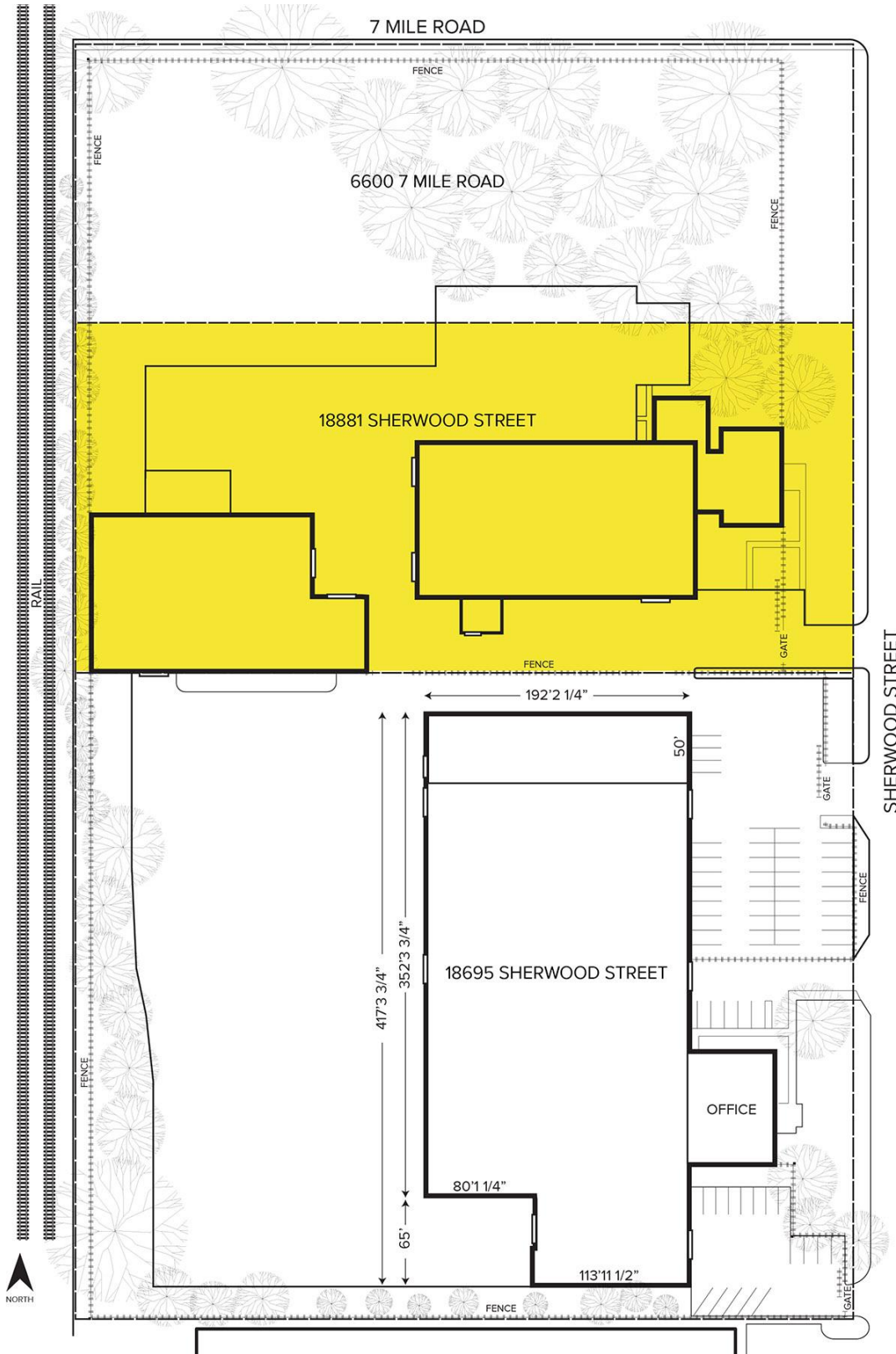
**SIGNATURE ASSOCIATES**  
One Towne Square, Suite 1200  
Southfield, MI 48076  
www.signatureassociates.com

# 18881 Sherwood Street – Detroit, Michigan

Industrial For Sale

52,291  
Square Feet  
AVAILABLE

## Site Plan



For more information, please contact:

**STEVE GORDON**  
(248) 948 0101  
sgordon@signatureassociates.com

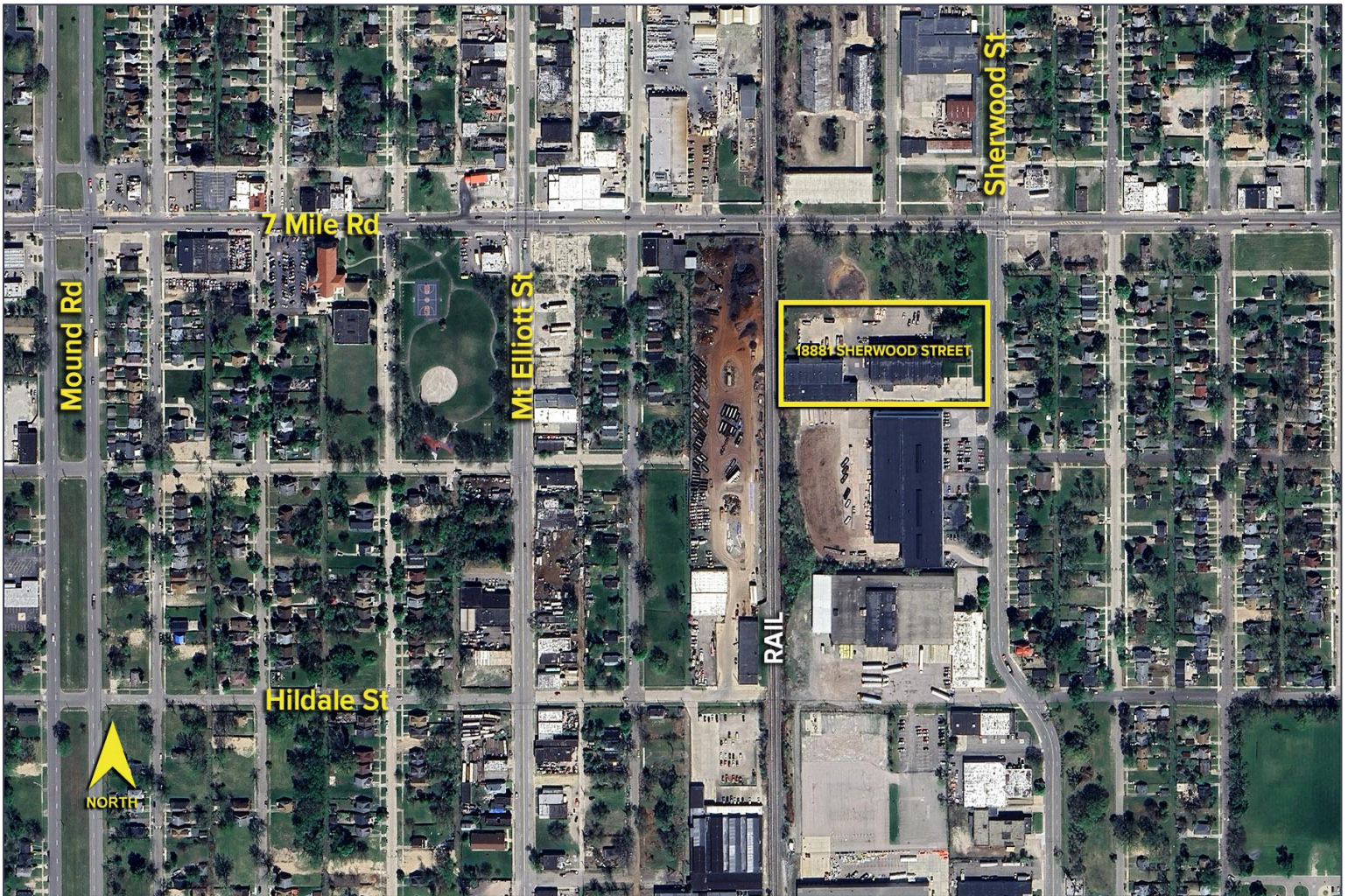
**SIGNATURE ASSOCIATES**  
One Towne Square, Suite 1200  
Southfield, MI 48076  
www.signatureassociates.com

# 18881 Sherwood Street – Detroit, Michigan

Industrial For Sale

52,291  
Square Feet  
AVAILABLE

Aerial



For more information, please contact:

**STEVE GORDON**  
(248) 948 0101  
sgordon@signatureassociates.com

**SIGNATURE ASSOCIATES**  
One Towne Square, Suite 1200  
Southfield, MI 48076  
www.signatureassociates.com