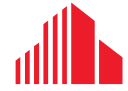




± 24,770 SF | 7.25 ACRES

# FOR SALE

1673 - 1729 W Pembroke Ave  
Hampton, Virginia 23661



CUSHMAN &  
WAKEFIELD

THALHIMER

# 1673 – 1729 W PEMBROKE AVE

## Site Features



### SITE FEATURES

Total Acreage:

± 7.25 Acres

Site Condition:

Improved Acreage is Fenced, Lit and Paved

Improved Acreage:

± 5.70 Acres

Additional Info:

- Currently Operated As A Used Car Lot And RV / Boat Storage
- Property Located in Urban Enterprise Zone
- 319 Striped Parking Spaces, Ability to Add Additional

Unimproved Acreage:

± 1.55 Acres

Traffic:

9,300 VPD (W Pembroke Ave)

Total Building Square Footage:

± 24,770 SF

Distances:

I-64 | 1.5 Miles  
I-664 | 0.3 Miles

Zoning:

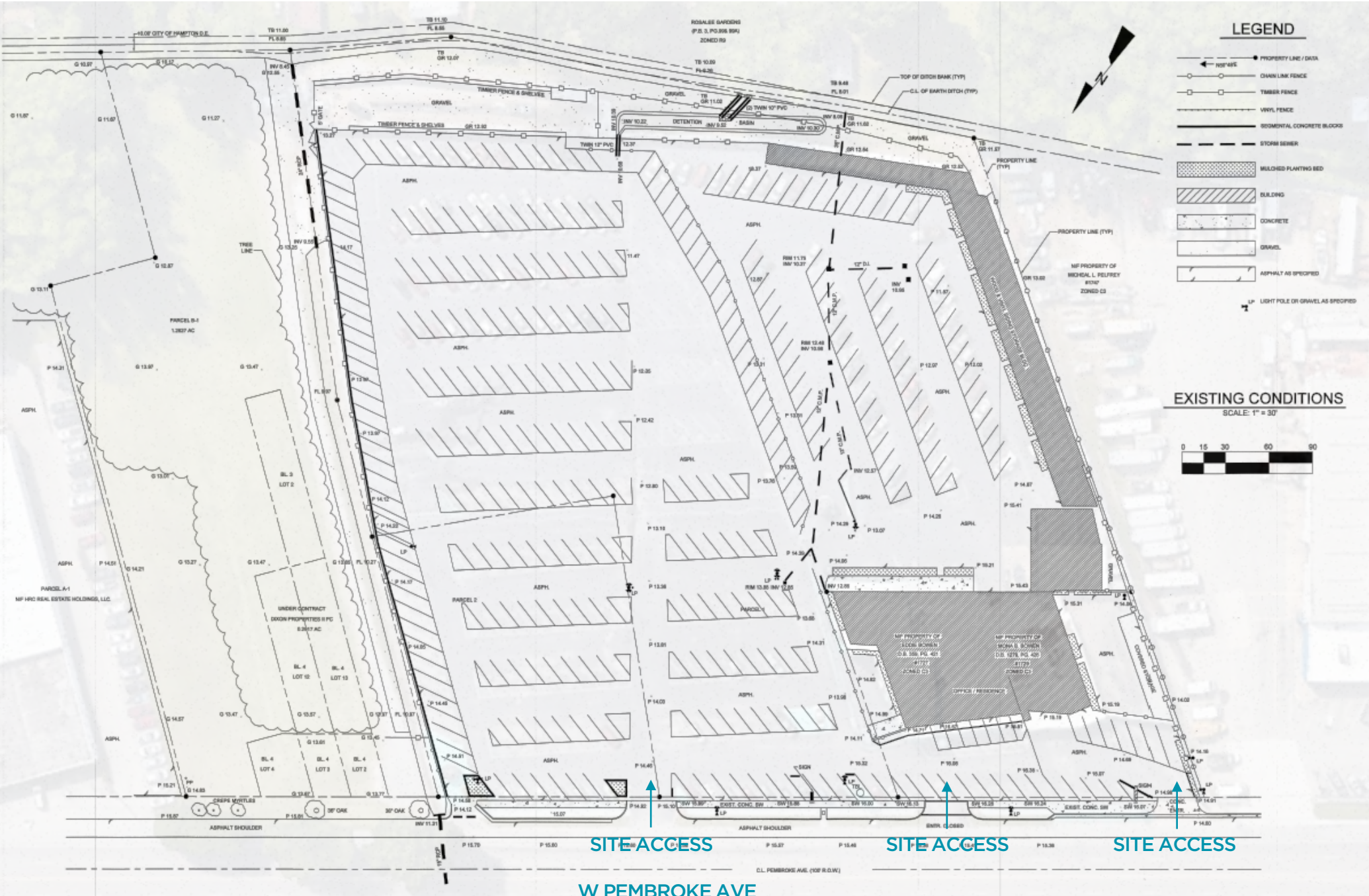
C-3, General Commercial  
([Zoning Link](#))

Pricing:

**\$3,000,000.00**

# 1673 - 1729 W PEMBROKE AVE

## Site Plan



SITE ACCESS

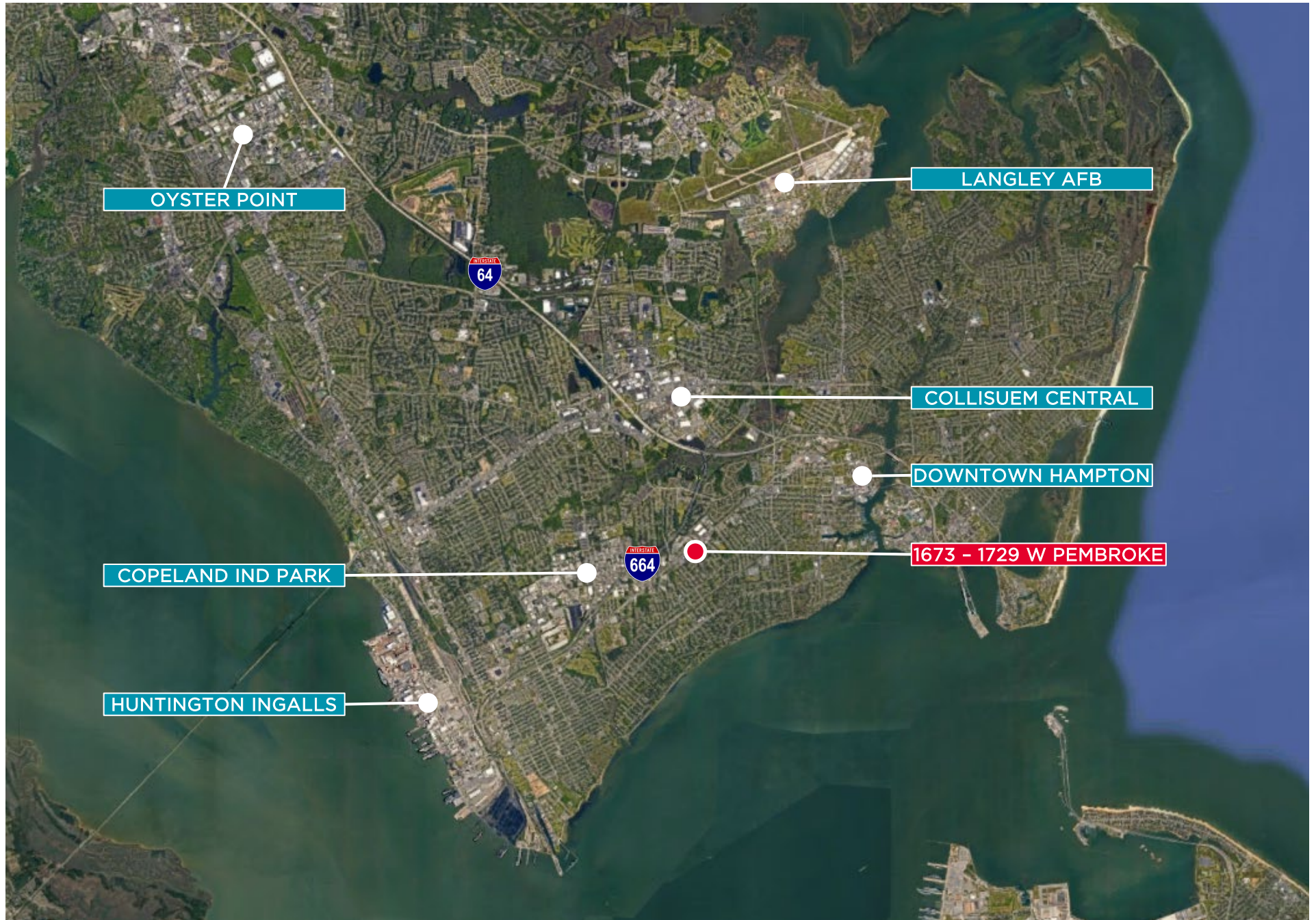
SITE ACCESS

SITE ACCESS

W PEMBROKE AVE

# 1673 - 1729 W PEMBROKE AVE

## Location





**FOR MORE INFORMATION, CONTACT:**

**ELLIS COLTHORPE**

Senior Associate  
757 818 4307  
ellis.colthorpe@thalhimer.com

**CLAY CULBRETH**

Senior Vice President  
757 407 2424  
clay.culbreth@thalhimer.com

Peninsula Office  
One BayPort Way, Suite 100  
Newport News, VA 23606  
thalhimer.com

Independently Owned and Operated / A Member of the Cushman & Wakefield Alliance

Cushman & Wakefield | Thalhimer © 2026. No warranty or representation, express or implied, is made to the accuracy or completeness of the information contained herein, and same is submitted subject to errors, omissions, change of price, rental or other conditions, withdrawal without notice, and to any special listing conditions imposed by the property owner(s). As applicable, we make no representation as to the condition of the property (or properties) in question.

