



»» 4,560 SF Available

»» **SUBLEASE  
AVAILABLE**

16605 N 28th Ave., Suite 101, Phoenix, Arizona



**CUSHMAN &  
WAKEFIELD**

# SUBLEASE HIGHLIGHTS



TERM:  
**NEGOTIABLE,**  
UP TO 7-YEARS



**5.3:1,000**  
PARKING RATIO



12' CEILINGS



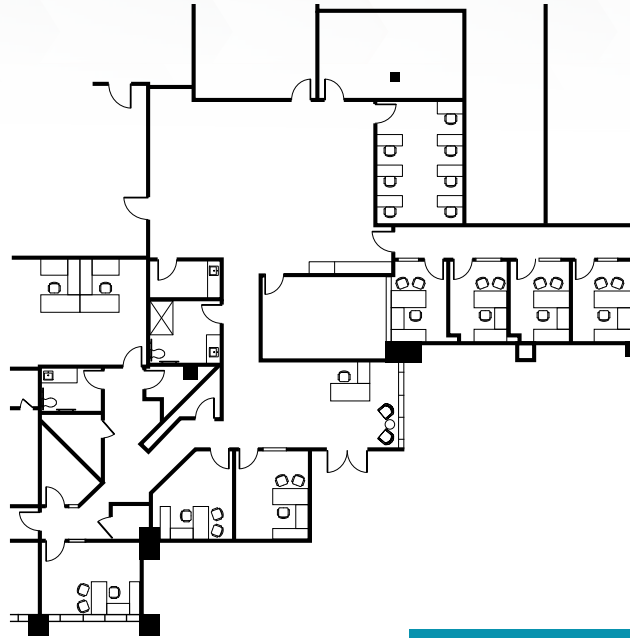
**INVITING** INTERIOR  
COURTYARD



**CORPORATE TENANT MIX**  
PART OF ARIZONA  
BUSINESS PARK



BUS ROUTE AND  
PARK & RIDE **ADJACENT**  
TO THE BUILDING



**4,560 SF Available**



## GREG MCMILLAN

Director  
greg.mcmillan@cushwake.com  
602 229 5922

## JOHN POMPAY

Senior Director  
john.pompay@cushwake.com  
602 224 4422

## RACE CARTER

Senior Associate  
race.carter@cushwake.com  
602 229 5842

