

APPROVED BY THE  
TOMS RIVER TOWNSHIP  
PLANNING & ZONING BOARD

|           |      |
|-----------|------|
| CHAIRMAN  | DATE |
| SECRETARY | DATE |
| ENGINEER  | DATE |

SQAURE FOOTAGES - ADDITION

SECOND FLOOR: 1767 SQFT  
FIRST FLOOR: 1733 SQFT  
BASEMENT: 1715 SQFT  
TOTAL: = 5,215 SQFT

SQAURE FOOTAGES - EXISTING BUILDING

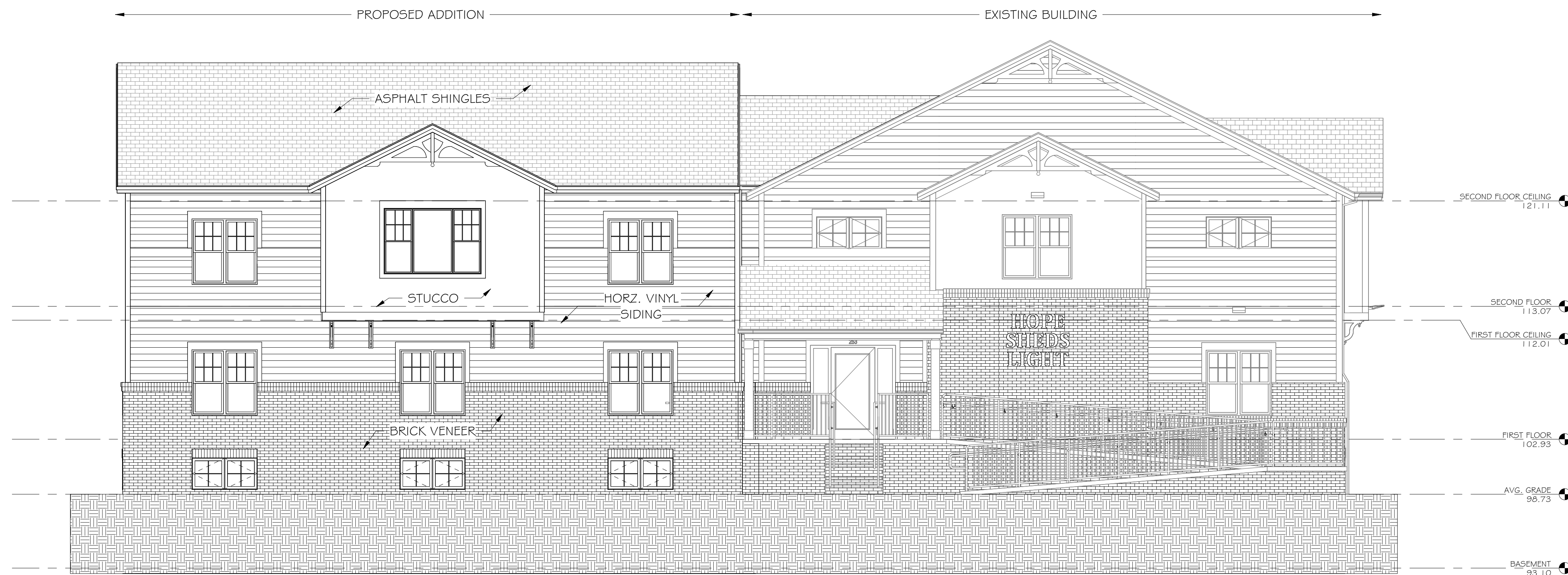
SECOND FLOOR: 2,451 SQFT  
FIRST FLOOR: 2,402 SQFT  
BASEMENT: 2,199 SQFT  
TOTAL: = 7,062 SQFT

BUILDING HEIGHTS

PROPOSED ADDITION = 32'-11"  
EXISTING BUILDING = 34'-7"



① FRONT EXISTING ELEVATION  
3/16" = 1'-0"



② FRONT PROPOSED ELEVATION  
3/16" = 1'-0"

**FWH**  
ASSOCIATES, P.A.  
CIVIL ENGINEERS • ARCHITECTS  
SURVEYORS • PLANNERS  
LANDSCAPE ARCHITECTS  
ENVIRONMENTAL CONSULTANTS  
2315 BRIDGE AVE. PT. PLEASANT, N.J. 08742  
(732) 797-3100 FAX: (732) 797-3223  
www.FWHAssociates.com

*Verity L. Fruzzell*

VERITY L. FRUZZELL, R.A., FAIA, CPID  
STATE OF NEW JERSEY #  
21A01378000

**PROPOSED ADDITION & ALTERATIONS FOR:**  
**HOPE SHEDS LIGHT**  
253 CHESTNUT STREET  
BLOCK 591.25, LOT 15  
TOWNSHIP OF TOMS RIVER, OCEAN COUNTY, NJ

DWG. TITLE:  
ELEVATIONS

DATE: FEB. 11, 2026  
REVISIONS:

|           |             |
|-----------|-------------|
| JOB No.:  | DRAWER No.: |
| CS69 0001 | AR-XXXX     |
| DRAWN BY: | CHECKED BY: |
| MF        | VLF         |

DWG. No.:  
**A200**

THIS DOCUMENT AND THE ARCHITECTURAL WORK REPRESENTED ARE THE COPYRIGHTED WORK OF FWH ASSOCIATES AND MAY NOT BE COPIED BY ANYONE IN WHOLE OR IN PART WITHOUT EXPRESS WRITTEN PERMISSION OF THE ARCHITECT. (C) 2024 ALL RIGHTS RESERVED.

APPROVED BY THE  
TOMS RIVER TOWNSHIP  
PLANNING & ZONING BOARD

CHAIRMAN \_\_\_\_\_ DATE \_\_\_\_\_

SECRETARY \_\_\_\_\_ DATE \_\_\_\_\_

ENGINEER \_\_\_\_\_ DATE \_\_\_\_\_

**FWH**  
ASSOCIATES, P.A.  
CIVIL ENGINEERS • PLANNERS  
ARCHITECTS  
SURVEYORS • LANDSCAPE ARCHITECTS  
LANDSCAPE ARCHITECTS  
ENVIRONMENTAL CONSULTANTS  
2315 BRIDGE AVE. PT. PLEASANT, N.J. 08742  
(732) 797-3100 FAX: (732) 797-3223  
www.FWHAssociates.com



VERITY L. FRUZZELL, R.A., FAIA, CPID  
STATE OF NEW JERSEY #  
21A01378000



① LEFT SIDE EXISTING ELEVATION  
3/16" = 1'-0"



② LEFT SIDE PROPOSED ELEVATION  
3/16" = 1'-0"

**PROPOSED ADDITION & ALTERATIONS FOR:**  
**HOPE SHEDS LIGHT**  
253 CHESTNUT STREET  
BLOCK 591.25, LOT 15  
TOWNSHIP OF TOMS RIVER, OCEAN COUNTY, NJ

DWG. TITLE:

ELEVATIONS

DATE: FEB. 11, 2026

REVISIONS:

JOB No.: 0569 0001

DRAWN BY: MF

CHECKED BY: VLF

DWG. No.:

**A201**

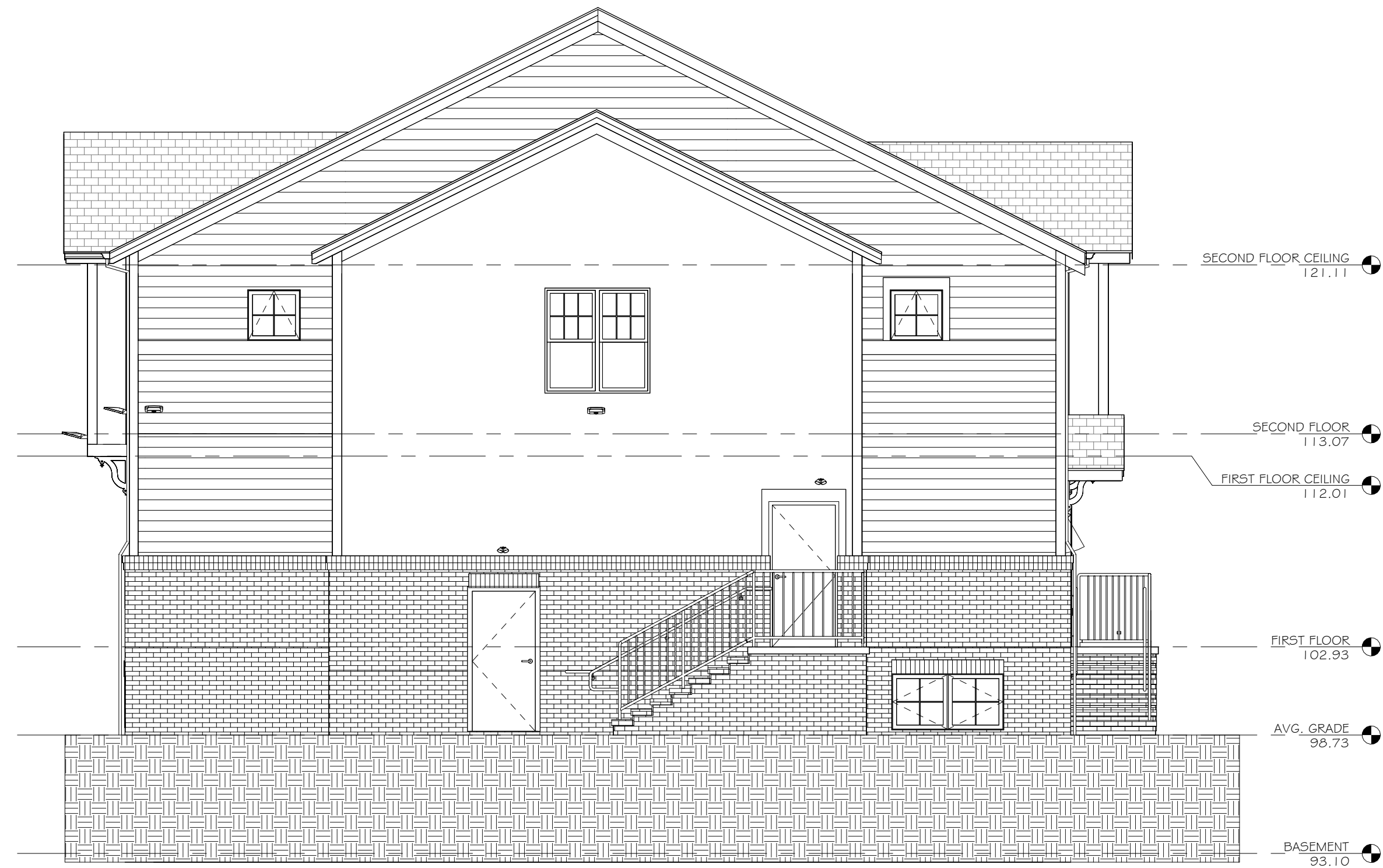
THIS DOCUMENT AND THE ARCHITECTURAL WORK REPRESENTED ARE THE COPYRIGHTED WORK OF FWH ASSOCIATES AND MAY NOT BE COPIED BY ANYONE IN WHOLE OR IN PART WITHOUT EXPRESS WRITTEN PERMISSION OF THE ARCHITECT. (C) 2024 ALL RIGHTS RESERVED.

APPROVED BY THE  
TOMS RIVER TOWNSHIP  
PLANNING & ZONING BOARD

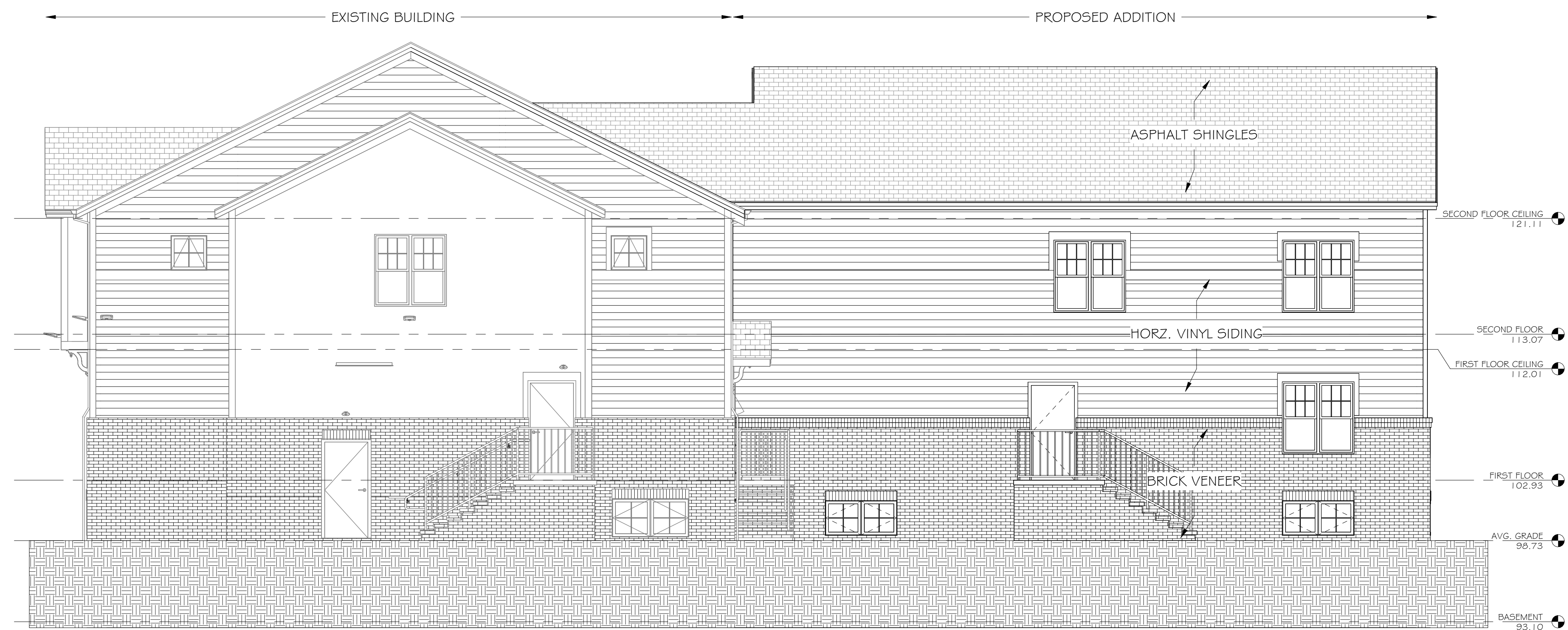
CHAIRMAN \_\_\_\_\_ DATE \_\_\_\_\_

SECRETARY \_\_\_\_\_ DATE \_\_\_\_\_

ENGINEER \_\_\_\_\_ DATE \_\_\_\_\_



1 REAR EXISTING ELEVATION  
3/16" = 1'-0"



2 REAR PROPOSED ELEVATION  
3/16" = 1'-0"

**FWH**  
ASSOCIATES, P.A.  
CIVIL ENGINEERS • ARCHITECTS  
SURVEYORS • PLANNERS  
LANDSCAPE ARCHITECTS  
ENVIRONMENTAL CONSULTANTS  
2315 BRIDGE AVE. PT. PLEASANT, NJ 08742  
(732) 797-3100 FAX: (732) 797-3223  
www.FWHAssociates.com

VERITY L. FRUZZELL, R.A., FAIA, CPID  
STATE OF NEW JERSEY #  
21A01378000

**PROPOSED ADDITION & ALTERATIONS FOR:**  
**HOPE SHEDS LIGHT**  
253 CHESTNUT STREET  
BLOCK 591.25, LOT 15  
TOWNSHIP OF TOMS RIVER, OCEAN COUNTY, NJ

DWG. TITLE:

ELEVATIONS

DATE: FEB. 11, 2026

REVISIONS:

JOB No.: DRAWER No.:

CS69 0001 ARJXXXX

DRAWN BY: CHECKED BY:

MF VLF

DWG. No.:

**A202**

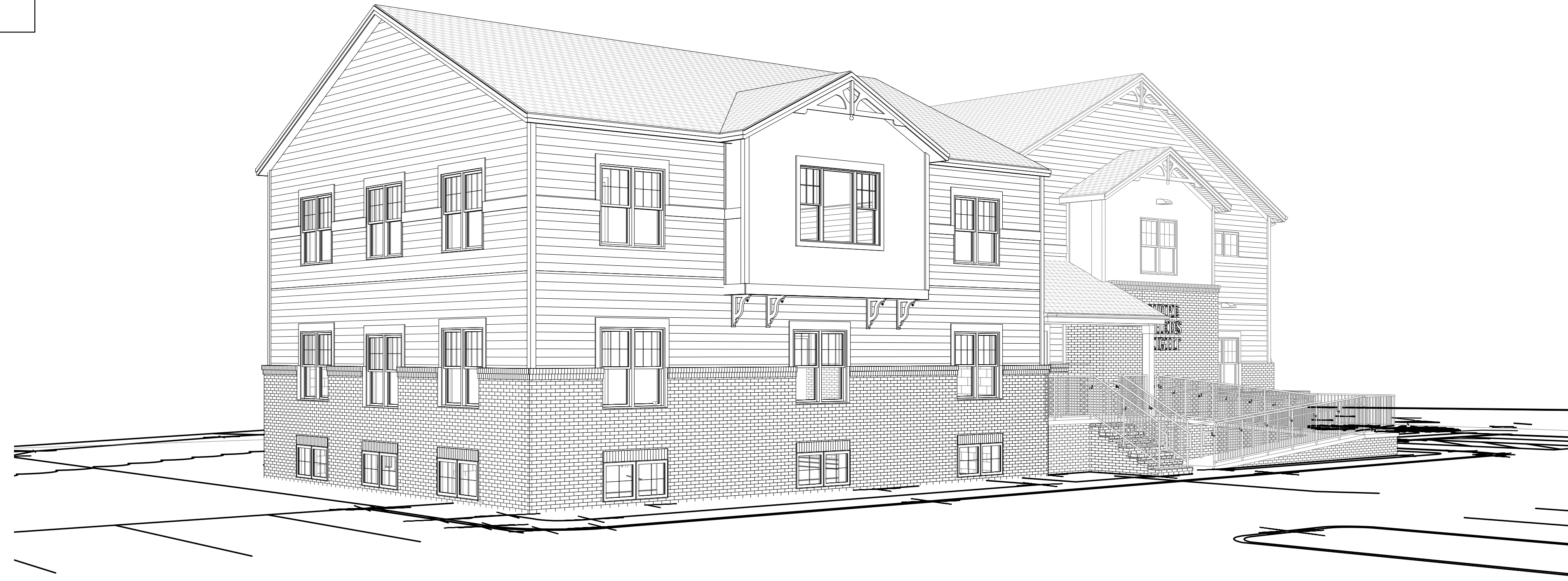
THIS DOCUMENT AND THE ARCHITECTURAL WORK REPRESENTED ARE THE COPYRIGHTED WORK OF FWH ASSOCIATES AND MAY NOT BE COPIED BY ANYONE IN WHOLE OR IN PART WITHOUT EXPRESS WRITTEN PERMISSION OF THE ARCHITECT. (C) 2024 ALL RIGHTS RESERVED.

APPROVED BY THE  
TOMS RIVER TOWNSHIP  
PLANNING & ZONING BOARD

CHAIRMAN \_\_\_\_\_ DATE \_\_\_\_\_

SECRETARY \_\_\_\_\_ DATE \_\_\_\_\_

ENGINEER \_\_\_\_\_ DATE \_\_\_\_\_



1 FRONT LEFT PERSPECTIVE



2 FRONT RIGHT PERSPECTIVE



3 REAR LEFT PERSPECTIVE

**FWH**  
ASSOCIATES, P.A.  
CIVIL ENGINEERS •  
ARCHITECTS  
SURVEYORS • PLANNERS  
LANDSCAPE ARCHITECTS  
ENVIRONMENTAL CONSULTANTS  
2315 BRIDGE AVE. PT. PLEASANT, N.J. 08742  
(732) 797-3100 FAX: (732) 797-3223  
www.FWHAssociates.com

VERITY L. FRUZZELL, R.A., FAIA, CPID  
STATE OF NEW JERSEY #  
21A01378000

**PROPOSED ADDITION & ALTERATIONS FOR:**  
**HOPE SHEDS LIGHT**  
253 CHESTNUT STREET  
BLOCK 591.25, LOT 15  
TOWNSHIP OF TOMS RIVER, OCEAN COUNTY, NJ

DWG. TITLE:

3D VIEWS

DATE: FEB. 11, 2024

REVISIONS:

JOB No.: DRAWER No.:

C589 0001 ARJXXXX

DRAWN BY: CHECKED BY:

MF VLF

DWG. No.:

**A204**

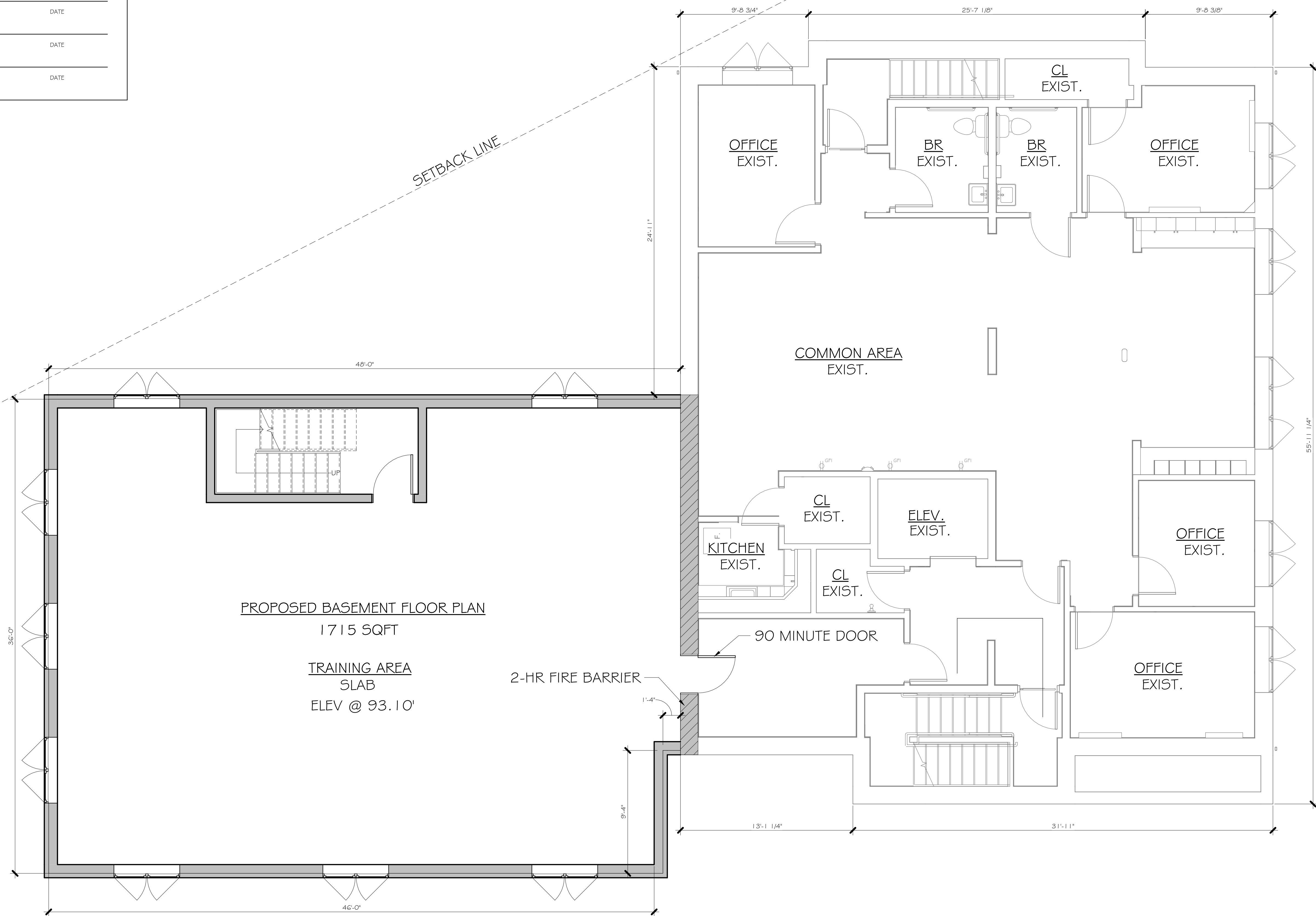
THIS DOCUMENT AND THE ARCHITECTURAL WORK REPRESENTED ARE THE COPYRIGHTED WORK OF FWH ASSOCIATES AND MAY NOT BE COPIED BY ANYONE IN WHOLE OR IN PART WITHOUT EXPRESS WRITTEN PERMISSION OF THE ARCHITECT. (C) 2024 ALL RIGHTS RESERVED.

APPROVED BY THE  
TOMS RIVER TOWNSHIP  
PLANNING & ZONING BOARD

CHAIRMAN \_\_\_\_\_ DATE \_\_\_\_\_

SECRETARY \_\_\_\_\_ DATE \_\_\_\_\_

ENGINEER \_\_\_\_\_ DATE \_\_\_\_\_



PROPOSED BASEMENT FLOOR PLAN

1715 SQFT

TRAINING AREA  
SLAB  
ELEV @ 93.10'

2-HR FIRE BARRIER

90 MINUTE DOOR

① BASEMENT  
1/4" = 1'-0"

**FWH**  
ASSOCIATES, P.A.  
CIVIL ENGINEERS • ARCHITECTS  
SURVEYORS • PLANNERS  
LANDSCAPE ARCHITECTS  
ENVIRONMENTAL CONSULTANTS  
2315 BRIDGE AVE. PT. PLEASANT, N.J. 08742  
(732) 797-3100 FAX: (732) 797-3223  
www.FWHAssociates.com

VERITY L. FRUZZELL, R.A., FAIA, CPID  
STATE OF NEW JERSEY #  
21A01378000

**PROPOSED ADDITION & ALTERATIONS FOR:**  
**HOPE SHEDS LIGHT**  
253 CHESTNUT STREET  
BLOCK 591.25, LOT 15  
TOWNSHIP OF TOMS RIVER, OCEAN COUNTY, NJ

DWG. TITLE:

BASEMENT PLAN

DATE: FEB. 11, 2026

REVISIONS:

JOB No.: C589 0001

DRAWN BY: MF

CHECKED BY: VLF

DWG. No.:

**A300**

THIS DOCUMENT AND THE ARCHITECTURAL WORK REPRESENTED ARE THE COPYRIGHTED WORK OF FWH ASSOCIATES AND MAY NOT BE COPIED BY ANYONE IN WHOLE OR IN PART WITHOUT EXPRESS WRITTEN PERMISSION OF THE ARCHITECT. (C) 2024 ALL RIGHTS RESERVED.

APPROVED BY THE  
TOMS RIVER TOWNSHIP  
PLANNING & ZONING BOARD

|           |      |
|-----------|------|
| CHAIRMAN  | DATE |
| SECRETARY | DATE |
| ENGINEER  | DATE |

**FWH**  
ASSOCIATES, P.A.  
CIVIL ENGINEERS • ARCHITECTS  
SURVEYORS • PLANNERS  
LANDSCAPE ARCHITECTS  
ENVIRONMENTAL CONSULTANTS  
2315 BRIDGE AVE. PT. PLEASANT, NJ 08742  
(732) 797-3100 FAX: (732) 797-3223  
www.FWHAssociates.com

*Verity L. Fruzzell*  
VERITY L. FRUZZELL, R.A., FAIA, CPID  
STATE OF NEW JERSEY #  
21A01378000

**PROPOSED ADDITION & ALTERATIONS FOR:  
HOPE SHEDS LIGHT**  
253 CHESTNUT STREET  
BLOCK 591.25, LOT 15  
TOWNSHIP OF TOMS RIVER, OCEAN COUNTY, NJ

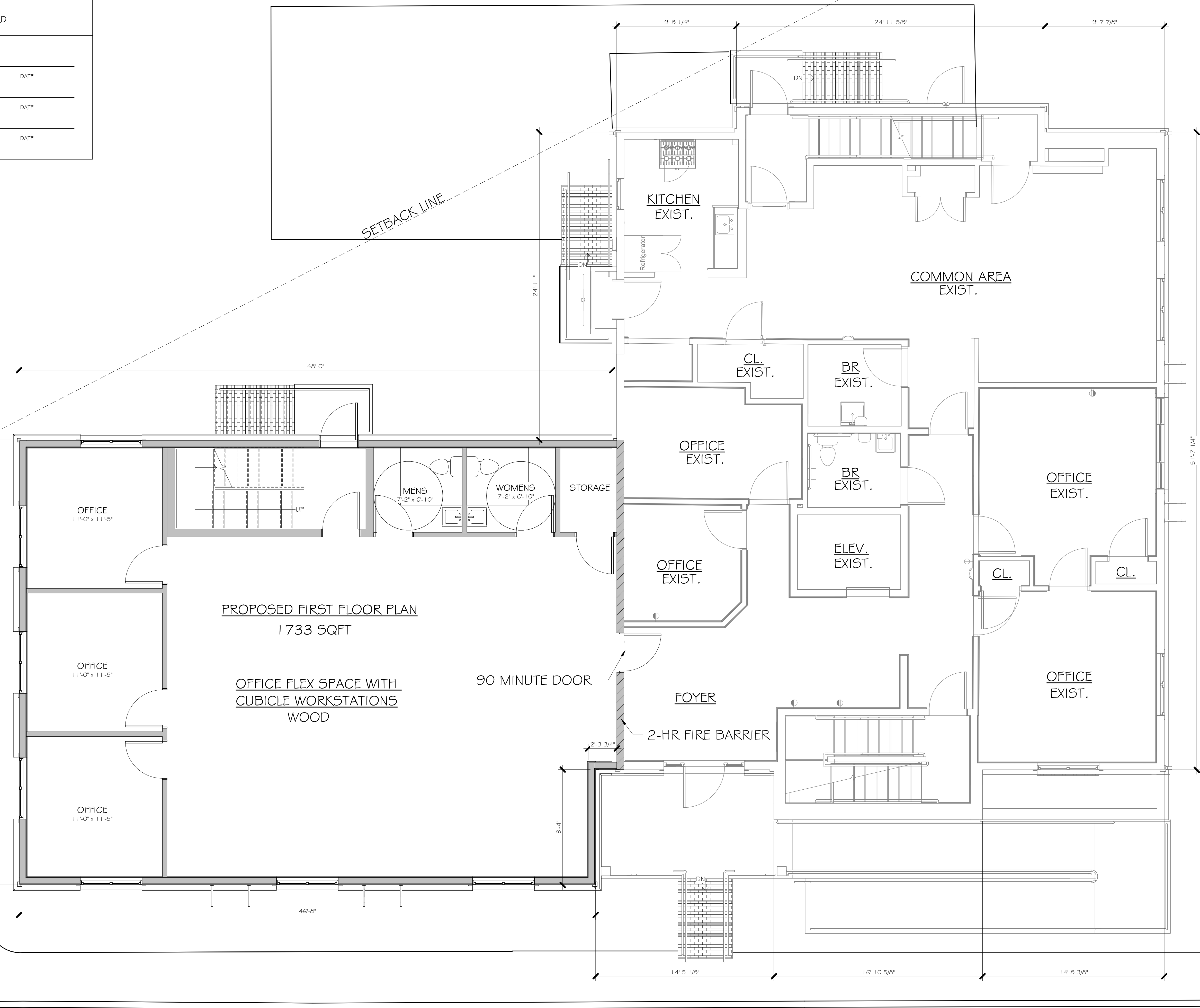
DWG. TITLE:  
FIRST FLOOR PLAN

DATE: FEB. 11, 2026  
REVISIONS:

|           |             |
|-----------|-------------|
| JOB No.:  | DRAWER No.: |
| CS69 0001 | AR-XXXX     |
| DRAWN BY: | CHECKED BY: |
| MF        | VLV         |

DWG. No.:  
**A301**

THIS DOCUMENT AND THE ARCHITECTURAL WORK REPRESENTED ARE THE COPYRIGHTED WORK OF FWH ASSOCIATES AND MAY NOT BE COPIED BY ANYONE IN WHOLE OR IN PART WITHOUT EXPRESS WRITTEN PERMISSION OF THE ARCHITECT. (C) 2024 ALL RIGHTS RESERVED.



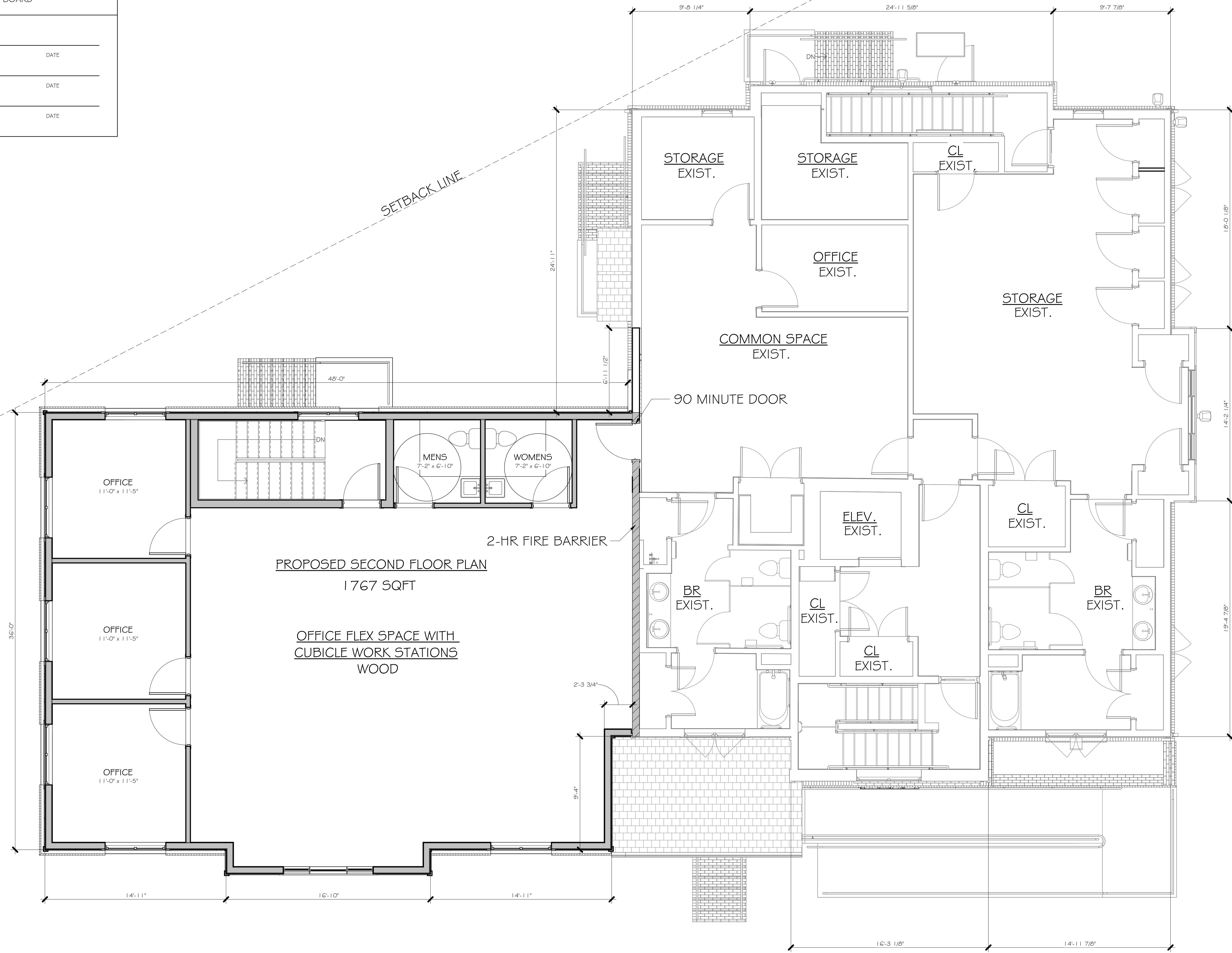
1 FIRST FLOOR PLAN  
1/4" = 1'-0"

APPROVED BY THE  
TOMS RIVER TOWNSHIP  
PLANNING & ZONING BOARD

CHAIRMAN \_\_\_\_\_ DATE \_\_\_\_\_

SECRETARY \_\_\_\_\_ DATE \_\_\_\_\_

ENGINEER \_\_\_\_\_ DATE \_\_\_\_\_



PROPOSED SECOND FLOOR PLAN  
1767 SQFT

OFFICE FLEX SPACE WITH  
CUBICLE WORK STATIONS  
WOOD

1 SECOND FLOOR PLAN  
1/4" = 1'-0"

**FWH**  
ASSOCIATES, P.A.  
CIVIL ENGINEERS • ARCHITECTS  
SURVEYORS • PLANNERS  
LANDSCAPE ARCHITECTS  
ENVIRONMENTAL CONSULTANTS  
2315 BRIDGE AVE. PT. PLEASANT, N.J. 08742  
(732) 797-3100 FAX: (732) 797-3223  
www.FWHAssociates.com

*[Signature]*  
VERITY L. FRUZZELL, R.A., FAIA, CPID  
STATE OF NEW JERSEY #  
21A01378000

**PROPOSED ADDITION & ALTERATIONS FOR:  
HOPE SHEDS LIGHT**  
253 CHESTNUT STREET  
BLOCK 591.25, LOT 15  
TOWNSHIP OF TOMS RIVER, OCEAN COUNTY, NJ

DWG. TITLE:  
SECOND FLOOR  
PLAN

DATE: FEB. 11, 2026

REVISIONS:

|  |  |
|--|--|
|  |  |
|  |  |
|  |  |
|  |  |
|  |  |

|           |             |
|-----------|-------------|
| JOB No.:  | DRAWER No.: |
| C589 0001 | AR-XXXX     |
| DRAWN BY: | CHECKED BY: |
| MF        | VLF         |

DWG. No.:  
**A302**

THIS DOCUMENT AND THE ARCHITECTURAL WORK REPRESENTED ARE THE COPYRIGHTED WORK OF FWH ASSOCIATES AND MAY NOT BE COPIED BY ANYONE IN WHOLE OR IN PART WITHOUT EXPRESS WRITTEN PERMISSION OF THE ARCHITECT. (C) 2024 ALL RIGHTS RESERVED.