

# 502 - SUITE AB

**± 5,000-15,000 TOTAL SF AVAILABLE**

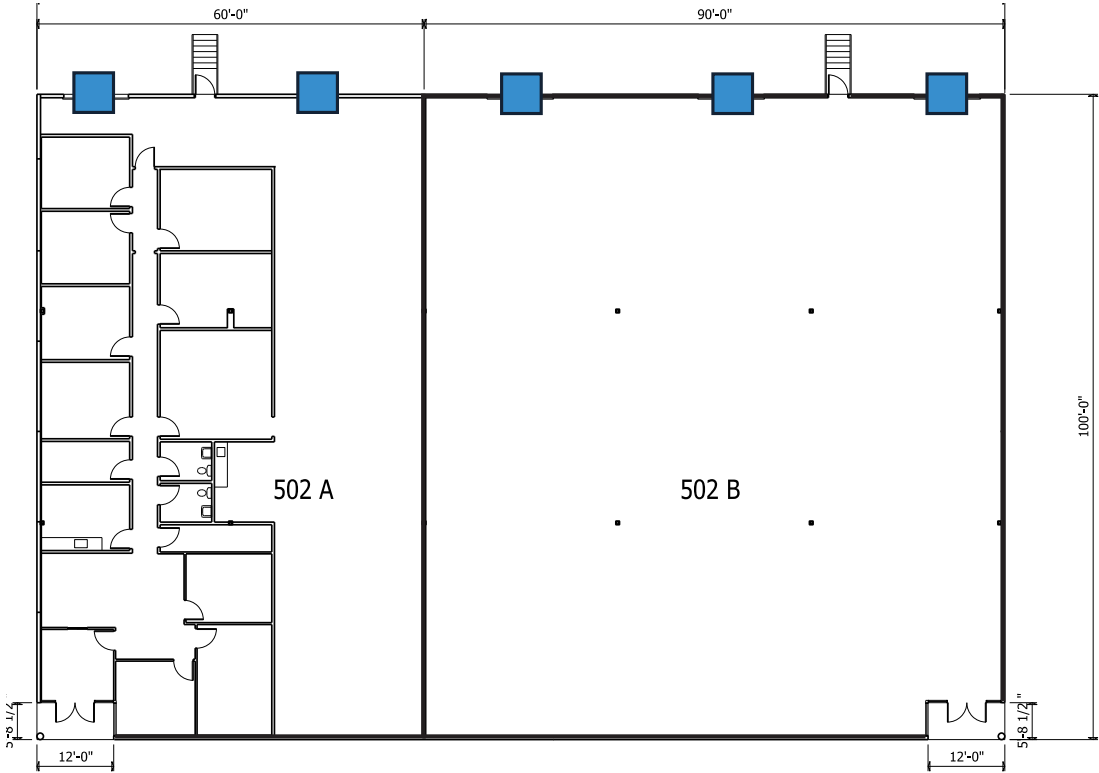
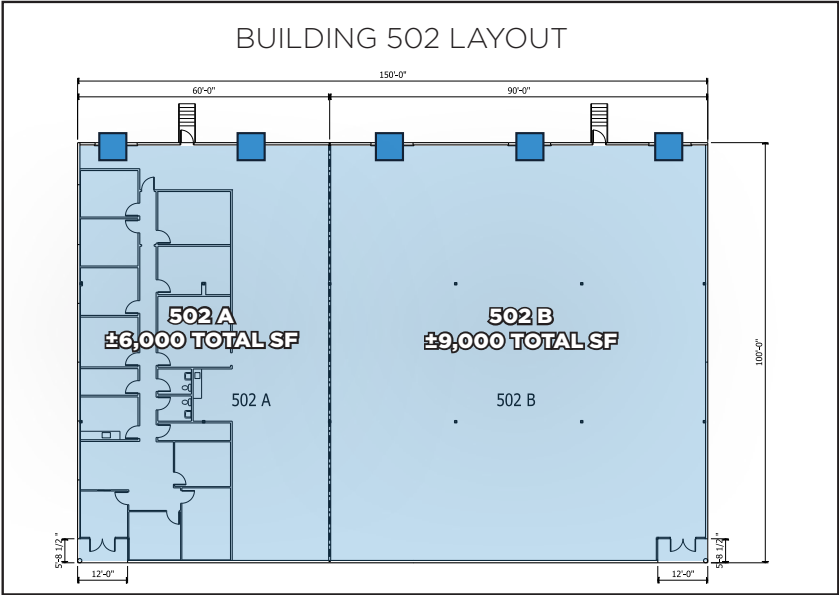
**±12,227 SF WAREHOUSE SPACE**

**±2,773 SF OFFICE SPACE**

**23' CLEAR HEIGHT**

**5 DOCK HIGH DOORS**

**Suite A AVAILABLE 5/31/26**



**■ = dock high doors**