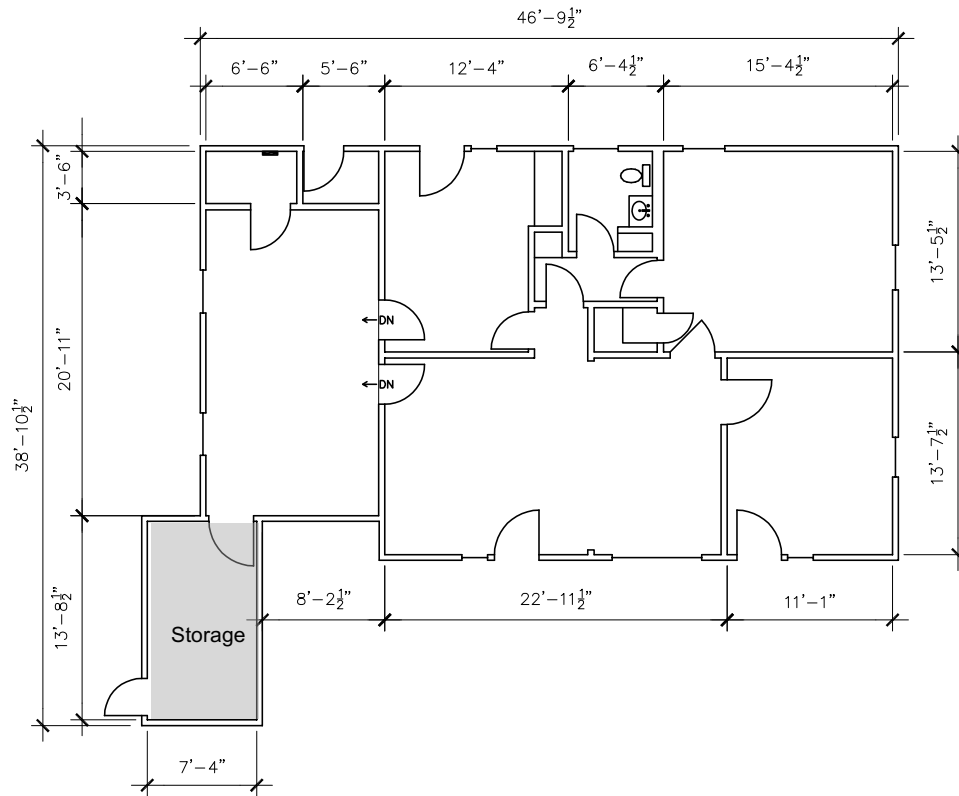
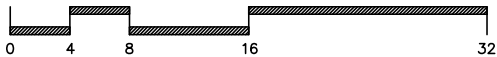


NOTE:

DIMENSIONS ARE TO SHOW ROOM SIZES.
 SQUARE FOOTAGE CALCULATIONS ARE DONE
 TO BOMA STANDARDS.



SCALE: 3/32" = 1'-0"



Drawing for:
 Duncan Park Capital
 904 West Ave. Ste. 102
 Austin, TX 78701

1009 MEREDITH DR.
 AUSTIN, TEXAS
 GROSS LEASABLE AREA: 1,383 S.F.

THE MEASUREMENTS, FLOOR PLANS,
 AND CALCULATIONS ARE ACCURATE
 USING BOMA MEASUREMENT
 STANDARDS FOR RETAIL BUILDINGS.
 ANSI/BOMA 265.5 - 2020
 Project No.: 2445.02
 Date: October 15, 2024
 ©2024

DIMENSIONS
 FLOORPLANS

AUSTIN ★ TEXAS
 DIMENSIONSFLOORPLANS.COM
 PHONE: (812) 342-0114