



# Rare Turnkey Hair Salon Opportunity in Brookside 333 W. Meyer Boulevard, Kansas City, Missouri



## SALE PRICE: \$145,000 | 750 SF SUITE

### DEMOGRAPHICS

	1 mile	3 miles	5 miles
Estimated Population	7,867	99,898	240,730
Avg. Household Income	\$8,194	\$83,599	\$248,674

- Fully Operating Hair Salon
- 3 Chairs, 2 Bowls, and all other FF&E Included
- Full Access to Condomenium Amenities
- Water included in HOA dues
- New Flooring



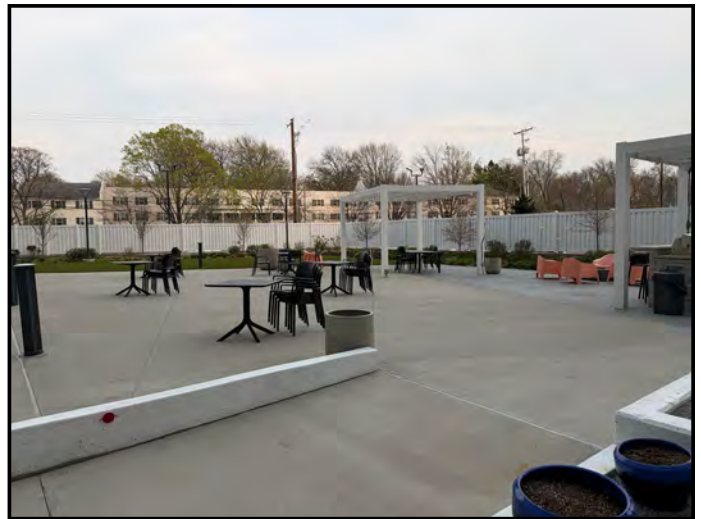
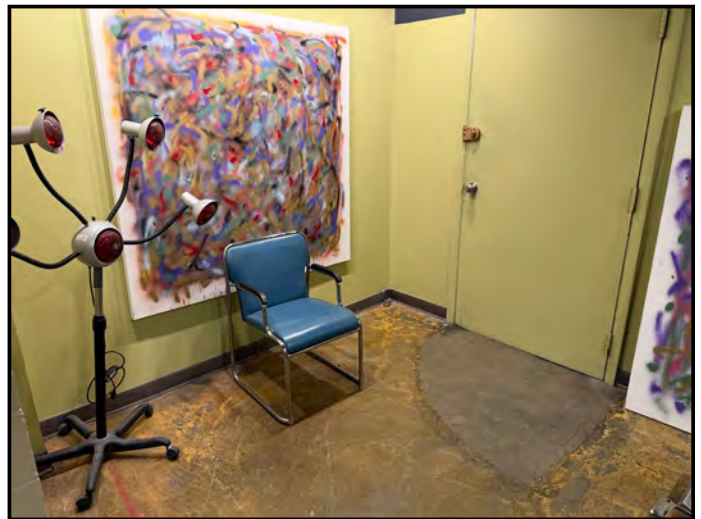
CLICK HERE TO VIEW MORE LISTING INFORMATION

For More Information Contact:

JOSH ROTHSCHILD | 816.412.7360 | jrothschild@blockandco.com

Exclusive Agent

PHOTOS



# Rare Turnkey Hair Salon Opportunity in Brookside

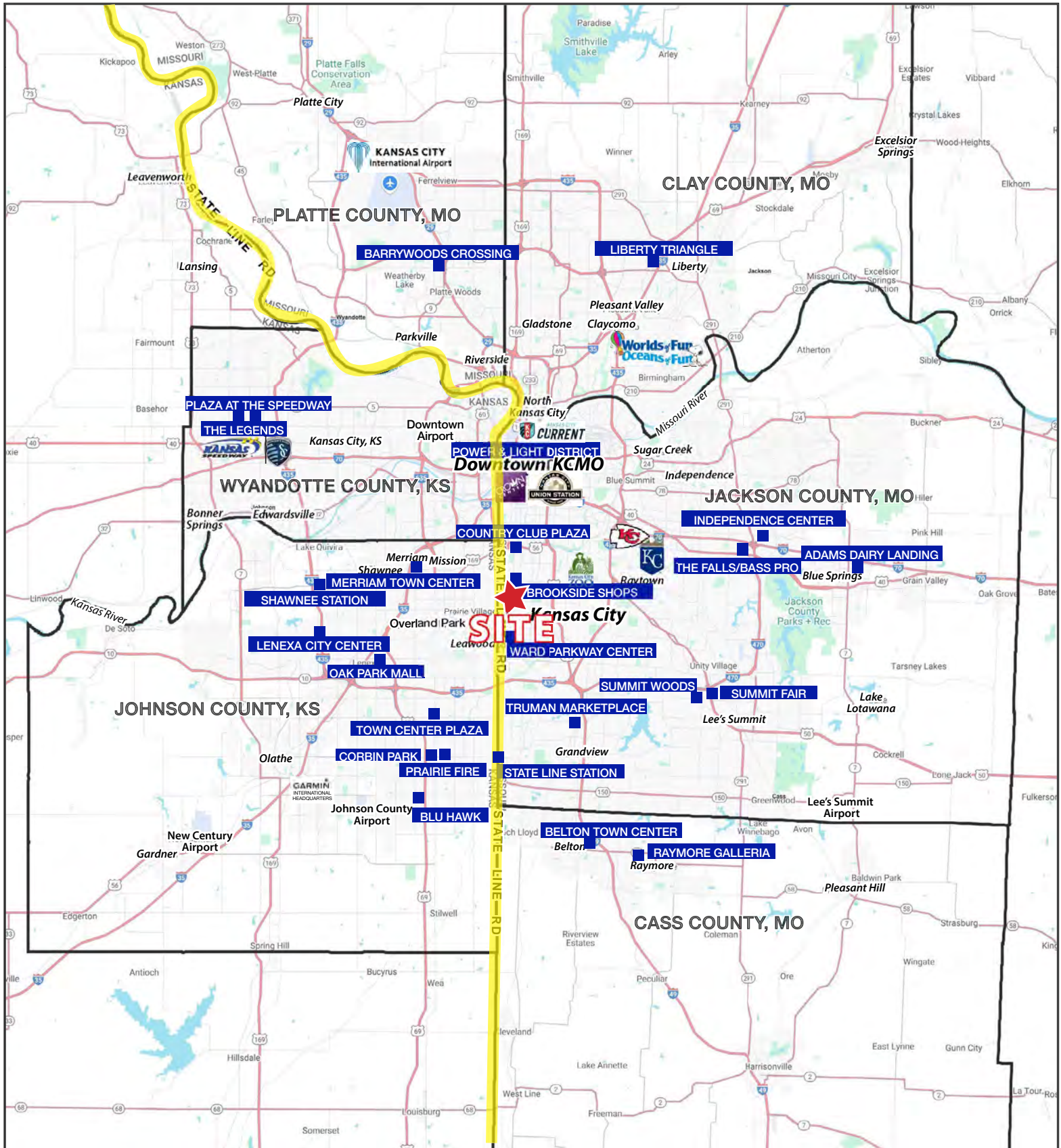
## 333 W. Meyer Boulevard, Kansas City, Missouri

### AERIAL



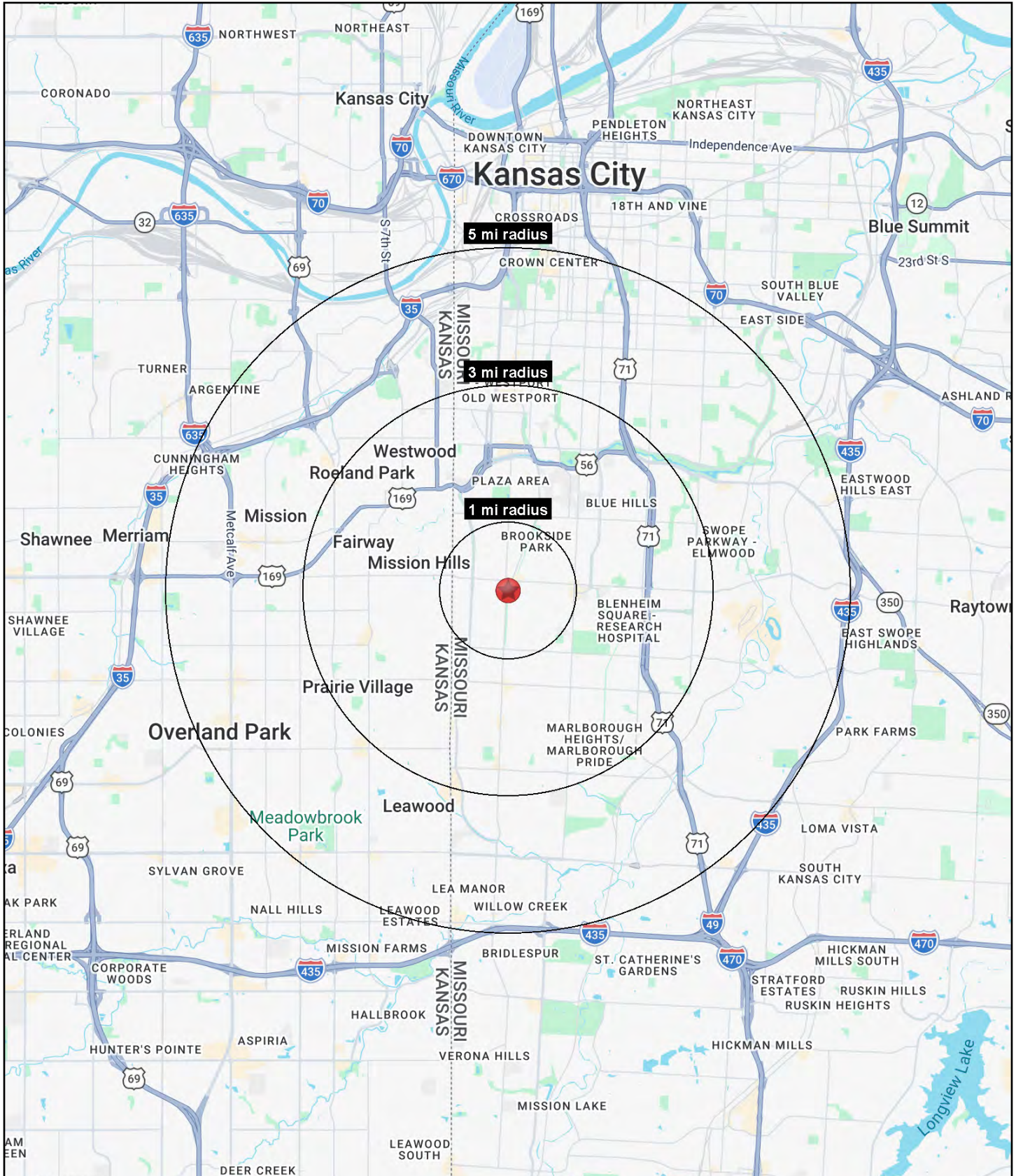


# Rare Turnkey Hair Salon Opportunity in Brookside 333 W. Meyer Boulevard, Kansas City, Missouri





# Rare Turnkey Hair Salon Opportunity in Brookside 333 W. Meyer Boulevard, Kansas City, Missouri





# Rare Turnkey Hair Salon Opportunity in Brookside

## 333 W. Meyer Boulevard, Kansas City, Missouri

333 W. Meyer Boulevard Kansas City, MO 64113	1 mi radius	3 mi radius	5 mi radius
<b>Population</b>			
2026 Estimated Population	15,162	117,849	254,283
2031 Projected Population	15,184	116,580	254,400
2020 Census Population	15,605	118,148	247,690
2010 Census Population	15,036	114,092	237,873
Projected Annual Growth 2026 to 2031	-	-0.2%	-
Historical Annual Growth 2010 to 2026	-	0.2%	0.4%
2026 Median Age	41.1	37.2	36.9
<b>Households</b>			
2026 Estimated Households	6,573	55,458	121,140
2031 Projected Households	6,590	55,027	121,748
2020 Census Households	6,750	54,056	114,237
2010 Census Households	6,403	52,189	109,098
Projected Annual Growth 2026 to 2031	-	-0.2%	0.1%
Historical Annual Growth 2010 to 2026	0.2%	0.4%	0.7%
<b>Race and Ethnicity</b>			
2026 Estimated White	88.7%	66.3%	62.3%
2026 Estimated Black or African American	4.1%	23.7%	25.0%
2026 Estimated Asian or Pacific Islander	1.7%	2.2%	2.5%
2026 Estimated American Indian or Native Alaskan	0.1%	0.3%	0.4%
2026 Estimated Other Races	5.4%	7.5%	9.8%
2026 Estimated Hispanic	5.2%	7.4%	10.3%
<b>Income</b>			
2026 Estimated Average Household Income	\$218,287	\$143,415	\$121,907
2026 Estimated Median Household Income	\$170,358	\$104,037	\$89,819
2026 Estimated Per Capita Income	\$94,664	\$67,646	\$58,216
<b>Education (Age 25+)</b>			
2026 Estimated Elementary (Grade Level 0 to 8)	0.6%	1.9%	2.4%
2026 Estimated Some High School (Grade Level 9 to 11)	0.7%	3.2%	3.7%
2026 Estimated High School Graduate	5.5%	16.4%	19.1%
2026 Estimated Some College	8.4%	16.3%	18.3%
2026 Estimated Associates Degree Only	2.6%	4.6%	5.6%
2026 Estimated Bachelors Degree Only	39.6%	32.0%	29.5%
2026 Estimated Graduate Degree	42.7%	25.6%	21.4%
<b>Business</b>			
2026 Estimated Total Businesses	956	6,666	12,786
2026 Estimated Total Employees	7,274	67,379	154,639
2026 Estimated Employee Population per Business	7.6	10.1	12.1
2026 Estimated Residential Population per Business	15.9	17.7	19.9

©2026, Sites USA, Chandler, Arizona, 480-491-1112 Demographic Source: Applied Geographic Solutions 5/2026, TIGER Geography - RS1