



**MOUNTAIN WEST**  
COMMERCIAL REAL ESTATE



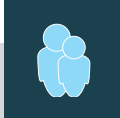


# HARD CORNER PAD

ANTELOPE DRIVE & MAIN STREET • LAYTON • UTAH • 84321

## BUILD-TO-SUIT OR GROUND LEASE

### PROPERTY SPECS

- Hard Corner Pad Available
- Approx. 0.65 Acre Parcel
- Drive-thru Approved
- Excellent Traffic Counts:
  - » Antelope Drive 53,379 ADT
  - » Main Street 15,682 ADT
- Call for Pricing

			
1 MILE	<b>16,327</b> 2022 EST. POPULATION	<b>5,833</b> 2022 EST. HOUSEHOLDS	<b>\$65,573</b> 2022 EST. MEDIAN HH INCOME
3 MILE	<b>89,375</b> 2022 EST. POPULATION	<b>28,398</b> 2022 EST. HOUSEHOLDS	<b>\$80,932</b> 2022 EST. MEDIAN HH INCOME
5 MILE	<b>195,967</b> 2022 EST. POPULATION	<b>59,987</b> 2022 EST. HOUSEHOLDS	<b>\$89,655</b> 2022 EST. MEDIAN HH INCOME

### CONTACT:

**CHAD MOORE**

cmoore@mtwest.com

direct 801.456.8801

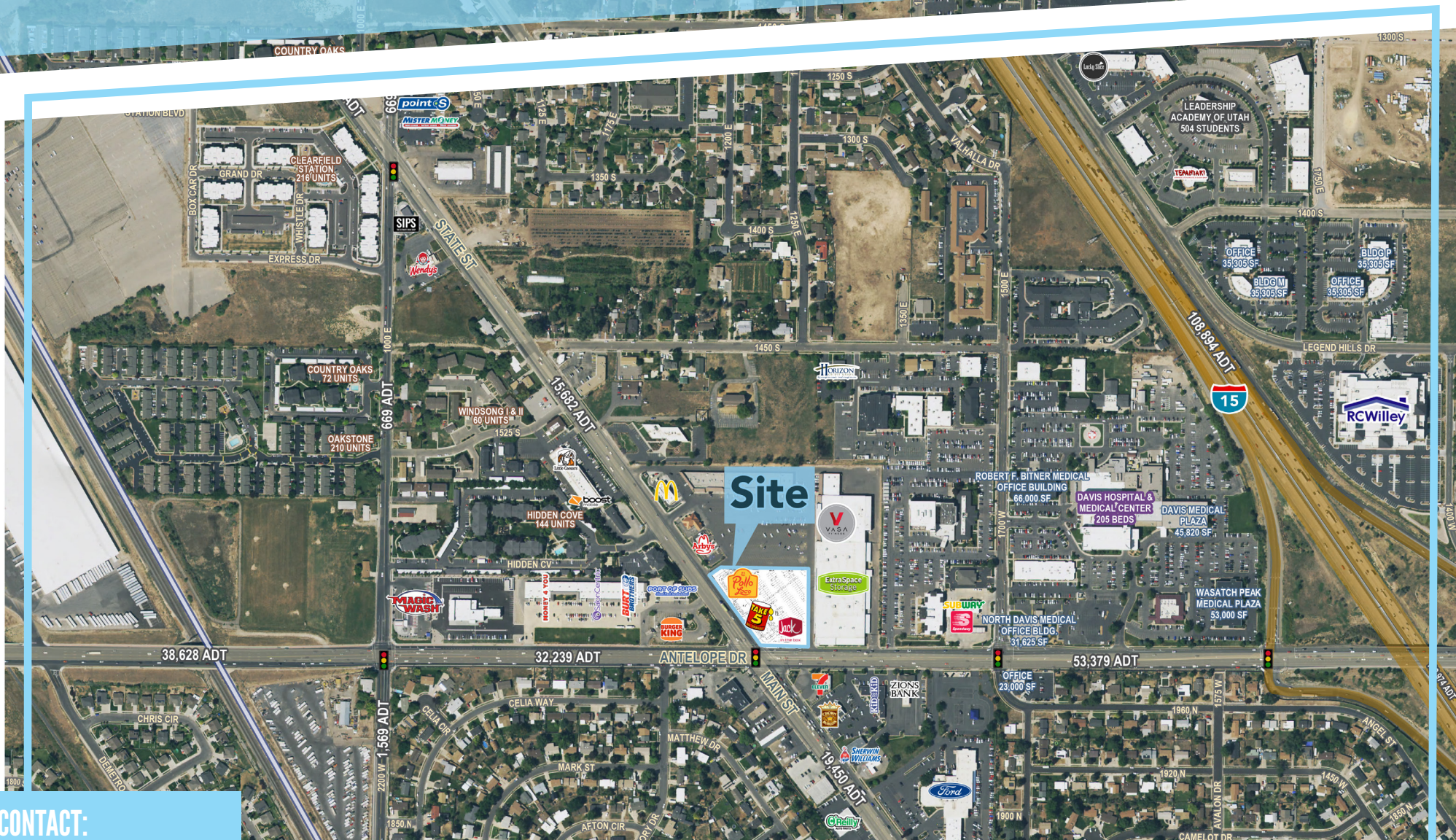
[View Profile](#)



FULL SERVICE COMMERCIAL REAL ESTATE



# HARD CORNER PAD



## CONTACT:

**CHAD MOORE**

[cmoore@mtnwest.com](mailto:cmoore@mtnwest.com)

direct 801.456.8801

[View Profile](#)

