

Birmingham Investment Realty

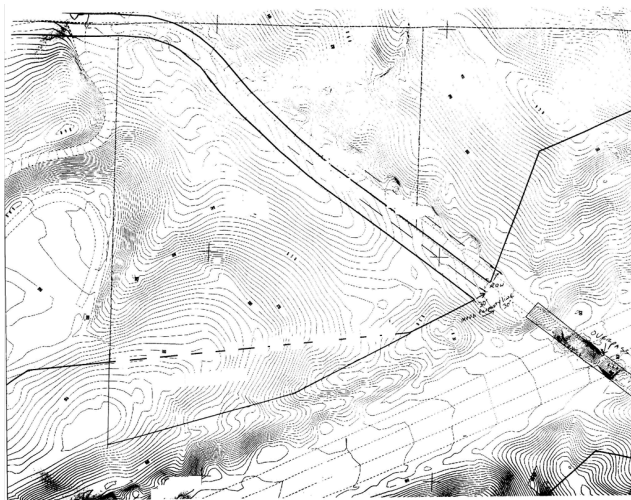
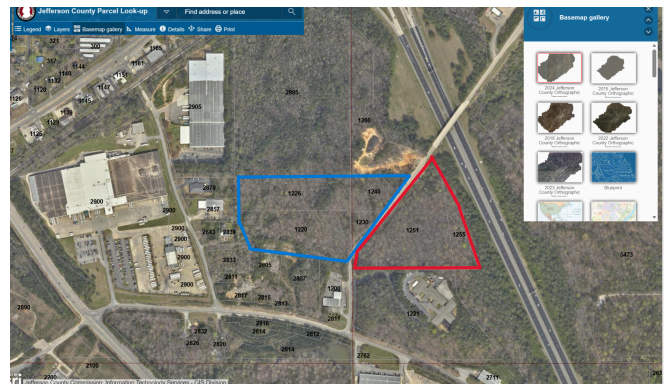
1251 and 1255 Alton Drive
Birmingham, Alabama 35210

\$725,000 was \$800,000

±10 Acre Development Parcel

Key Highlights

- Approx. 10 acres with defined boundary (see map)
- Surrounded by industrial/commercial users
- Zoned (I-2) for industrial operations in the city of Birmingham
- Easy access to the Birmingham metro area and major interstates
- 900 ft I-459 Southbound Frontage, great visibility.



For more information
contact:
Adam P. Balzli
Birmingham Investment
Realty
(205)789-7990
parker.balzli@gmail.com

Adam S. Balzli, CCIM
Birmingham Investment
Realty
(205)836-8636
abalzli@bellsouth.net