

Seller Financing Offered

Great North Boulder Location

1610 Lee Hill Dr | \$325,000

1610.WKRE.COM

Comfortable business office condo in north Boulder. Adjacent unit (1570 Lee Hill Drive #7) of same size and general floor plan is also available for additional \$325,000.

Mike Moger
303.859.4467

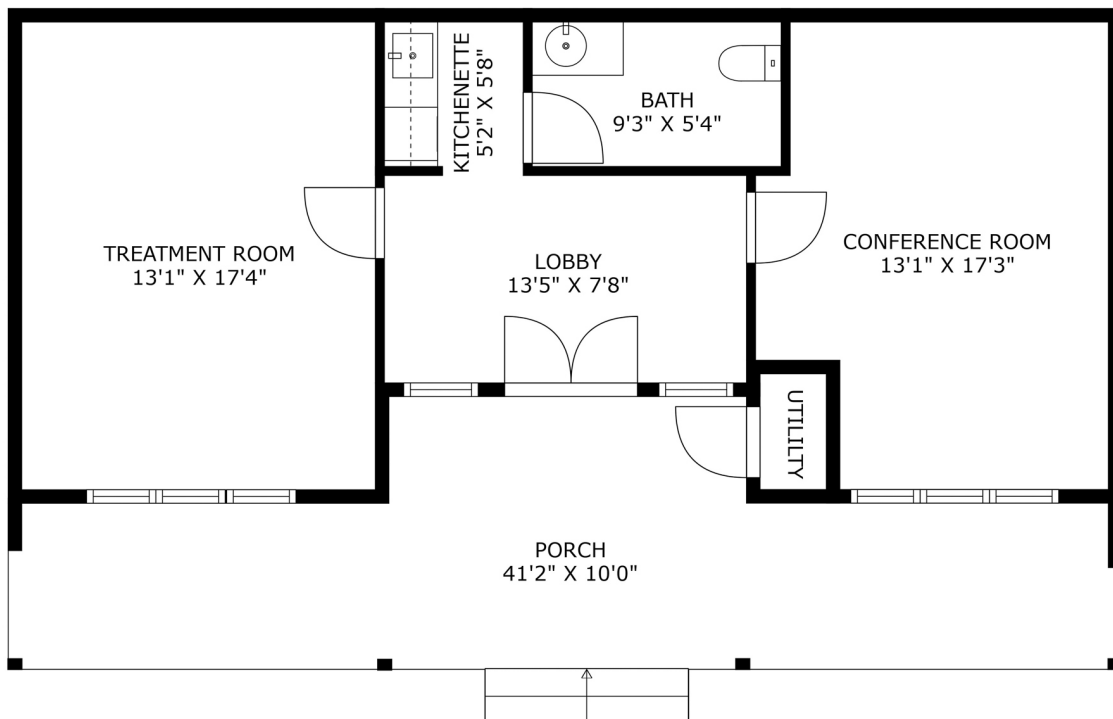
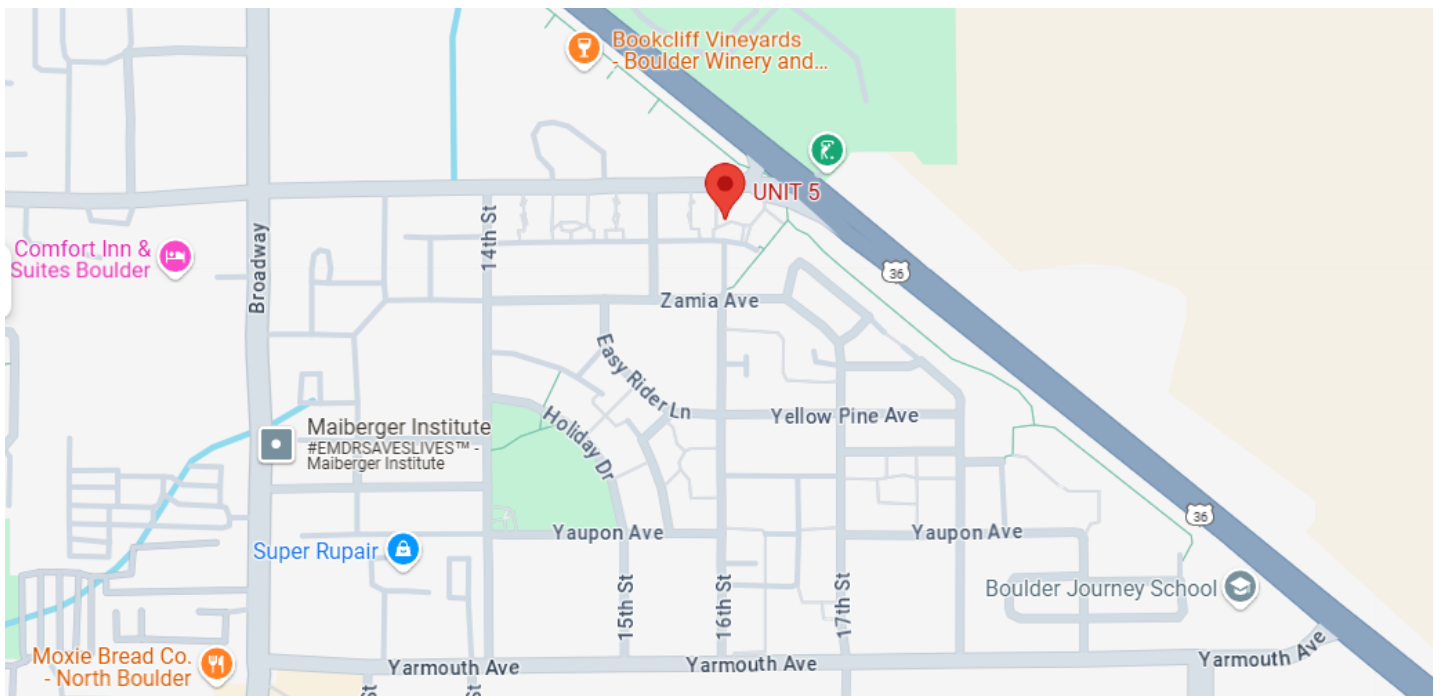
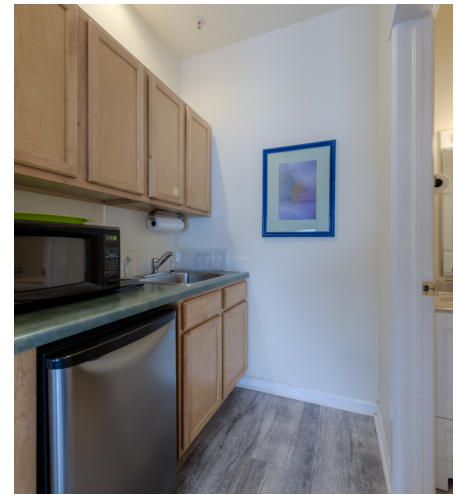
mmoger@wkre.com
www.mikemoger.com



Abe Moger
www.abemoger.wkre.com

amoger@wkre.com
www.abemoger.wkre.com





The information contained herein is provided without the intention that any Buyer relies upon it. The information was gathered from preliminary inspections of the property and the current actual knowledge of the owner. It is subject to change without notice and must be verified independently by Buyers.